



A New Experience for Land Withdrawal Impacts

2023 ESRI UC

Lucia M. Patterson, Nevada Division of Minerals



Nevada Mining and Land Withdrawal History Experience



Minerals

Land

Disclaimer

Pre 1850 M

1850s M

1860s M

1870s M

1880s M

1890s M

1900s M

1910s M

1920s M

1930s M

1940s M

1950s M

1960s M

1970s M

1980s M

1990s M

2000s M

2010s M

2020s M

2020s M ?

Disclaimer

Pre 1850 L

1850s L

1860s L

1870s L

1880s L

1890s L

1900s L

1910s L

1920s L

1930s L

1940s L

1950s L

1960s L

1970s L

1980s L

1990s L

2000s L

2010s L

2020s L

2020s L ?

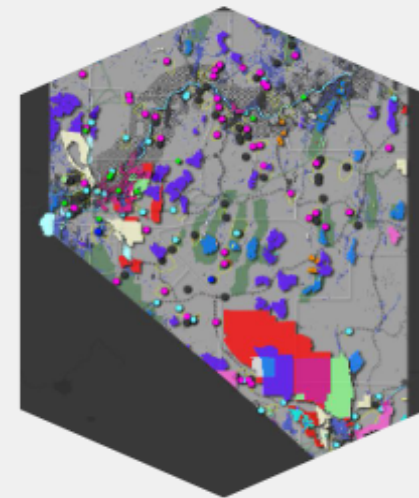
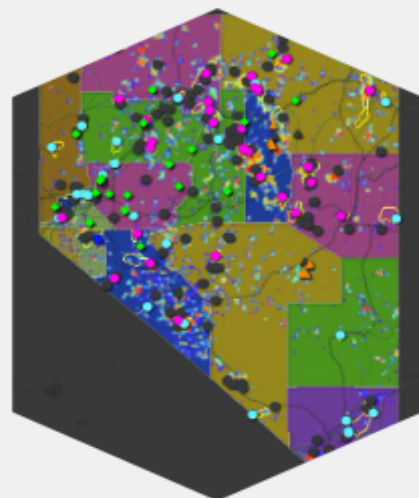
Disclaimer & Web Application Overview

THE NEVADA DIVISION OF MINERALS MAKES NO WARRANTIES OR GUARANTEES, EITHER EXPRESSED OR IMPLIED AS TO THE COMPLETENESS, ACCURACY, OR CORRECTNESS OF THE DATA PORTRAYED IN THIS PRODUCT NOR ACCEPTS ANY LIABILITY, ARISING FROM ANY INCORRECT, INCOMPLETE OR MISLEADING INFORMATION CONTAINED THEREIN. ALL INFORMATION, DATA AND DATABASES ARE PROVIDED "AS IS" WITH NO WARRANTY, EXPRESSED OR IMPLIED, INCLUDING BUT NOT LIMITED TO, FITNESS FOR A PARTICULAR PURPOSE. Users should also note that property boundaries included in any product do not represent an on-the-ground survey suitable for legal, engineering, or surveying purposes. They represent only the approximate relative locations. By accessing this website and/or data contained within the databases, you hereby release the Nevada Division of Minerals, its employees, agents, contractors, and suppliers from any and all responsibility and liability associated with its use. In no event shall the Nevada Division of Minerals or its officers or employees be liable for any damages arising in any way from the use of the application, or use of the information contained in the databases herein.

Historical narratives and data were obtained from several sources which can be found in the reference section at the bottom of this page. Direct links to the data sources were linked to the text of the source if available.

Edited by: Mike Visser, Jon Price, & Garrett Wake

In the map panels that will open, land withdrawn from mineral entry over time are displayed. Many, **THOUGH NOT ALL**, areas have been investigated, and the year in which the area was withdrawn from mineral entry (effectively or completely) has been interpreted by the Nevada Division of Minerals staff. We are not landmen, this is an interpretation meant to show general trends regarding lands withdrawn from mineral entry. **This continues to be a work in progress.** If you have any additional information you would like to add to the maps please email Lucia Patterson lpatterson@minerals.nv.gov Or submit information by [CLICKING HERE](#)

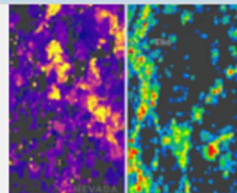


Click on a decade from the columns to the left to proceed! If using a laptop, drag two fingers down the right hand side of the mouse pad to scroll through the text.

Nevada Division of Minerals

Open Data Site

Featured Content!



C.H.I.M.E. Claims Habitation Interactive...

This map is a spatial representation of claims density and fees paid through time, p...

Explore



The Nevada Mineral Production Experience!!

View and filter annual production data for Nevada.

Explore

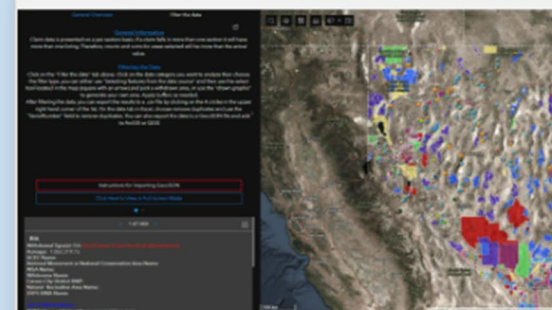


Historic Mineral Production in Nevada

To min



Nevada County Claims Summary Dashboard



Lands with, or Having the Potential for, Mineral Entry Conflicts

Analyze impacts from existing or proposed land withdrawals with respect mineral production, occurrence, and potential, along with BLM plans, notices, and mining claim data (density, distribution & annual...

Explore



Nevada Mining and Land Withdrawal History Experience

Overview of Nevada's mining and land withdrawal history with interactive maps and dashboards.

Explore

data-ndom.opendata.arcgis.com

Nevada Mining and Land Withdrawal History Experience

Minerals

Land

Disclaimer

Pre 1850 M

1850s M

1860s M

1870s M

1880s M

1890s M

1900s M

1910s M

1920s M

1930s M

1940s M

1950s M

1960s M

1970s M

1980s M

1990s M

2000s M

2010s M

2020s M

2020s M?

Disclaimer

Pre 1850 L

1850s L

1860s L

1870s L

1880s L

1890s L

1900s L

1910s L

1920s L

1930s L

1940s L

1950s L

1960s L

1970s L

1980s L

1990s L

2000s L

2010s L

2020s L

2020s L?

Land 1980s

The acreage of withdrawn land would double during this decade starting with a very large land withdrawal of wilderness study areas and instant study areas in 1980. These areas were to be evaluated to determine their suitability for a wilderness designation.

The BLM had promulgated the regulations with respect to disturbance and regulation on federal lands that went into effect in 1981. These regulations required a reclamation bond to be posted for mining plans but not for notices, though reclamation of any disturbance was still required for notices. If mining operations were under 5 acres, they could commence under a notice at this point.

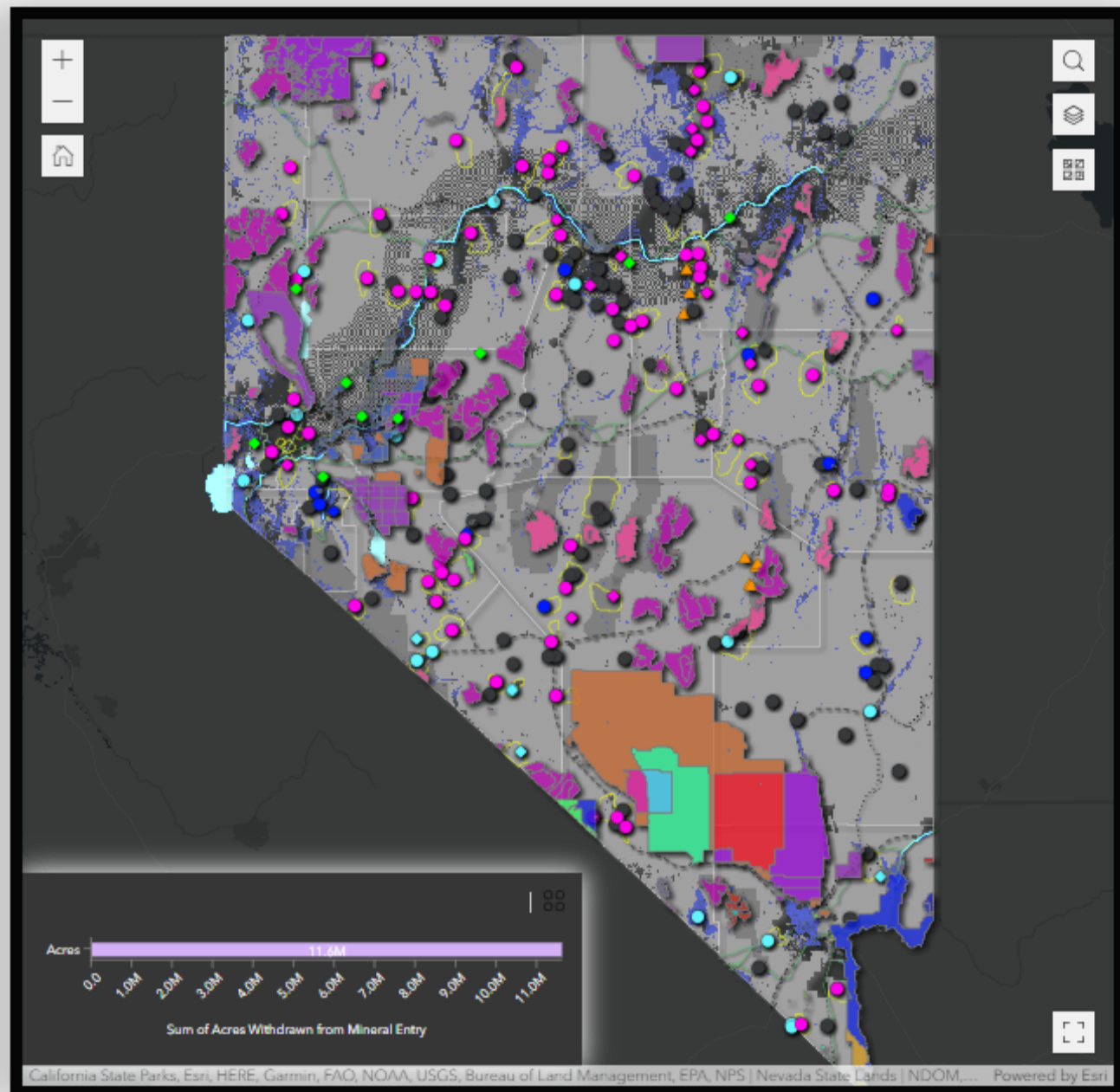
ACECs were established throughout the decade as MFPs and RMPs went into effect. Note, not all ACECs are completely withdrawn from mineral entry but their establishment may effectively withdraw them.

Producing Geothermal Fields

Active

Lands Withdrawn From Mineral Entry (Completely or Effectively)

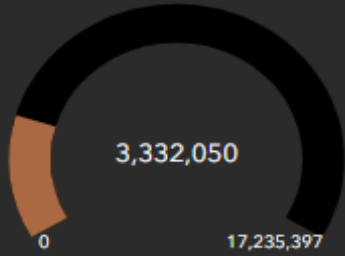
- ACEC
- ACEC, BR, National Monument
- ACEC, Carson City District RMP - Closed-loc
- ACEC, FWS
- ACEC, NCA
- ACEC, NCA, Wilderness



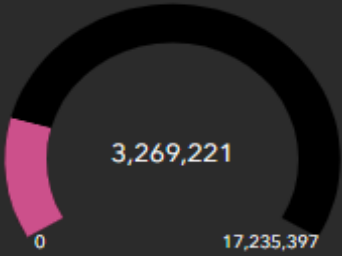
Values shown in the gauges will exceed the total land withdrawal acreage reported here. Special land management designations commonly overlap and each gauge is querying all features that include the land designation shown as the gauge title.

All Values in Acres

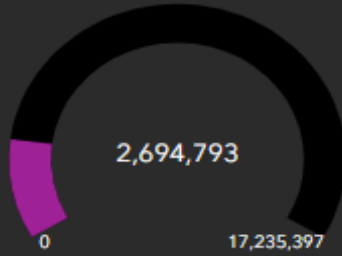
Department of Defense



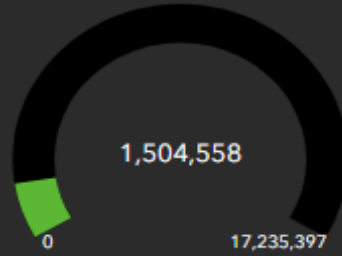
Wilderness



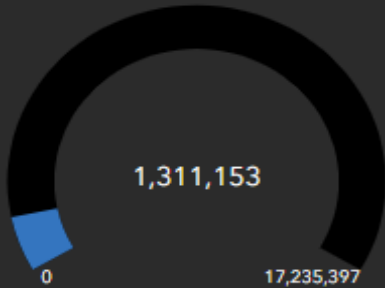
WSA



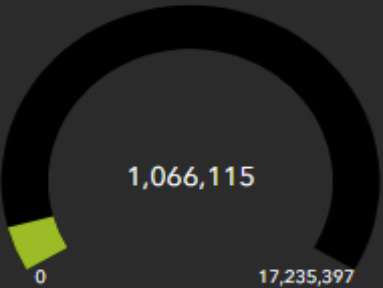
National Monument



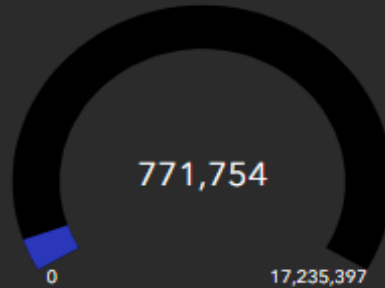
Areas of Critical Environmental Concern



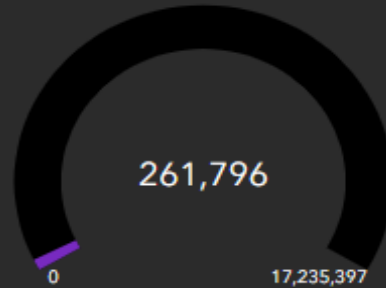
National Conservation Area



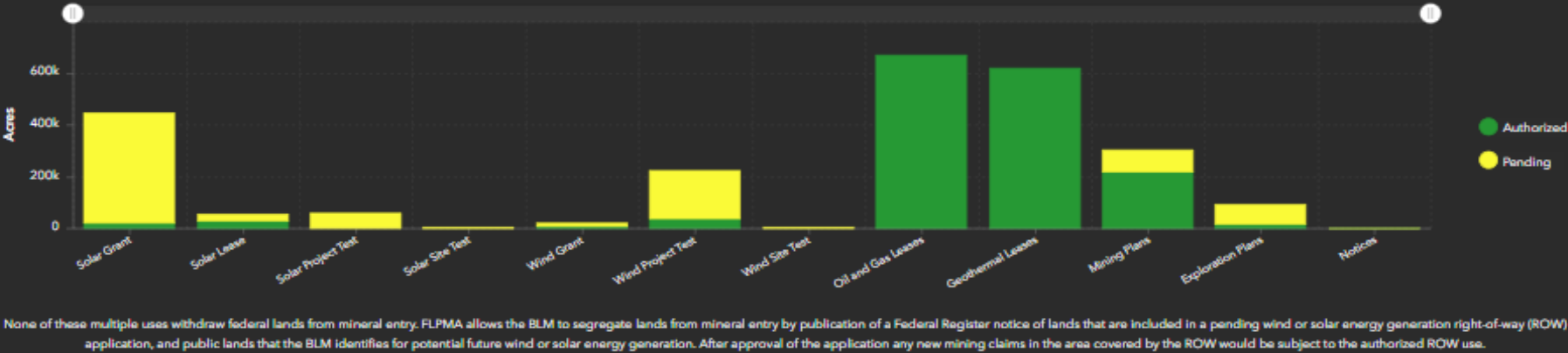
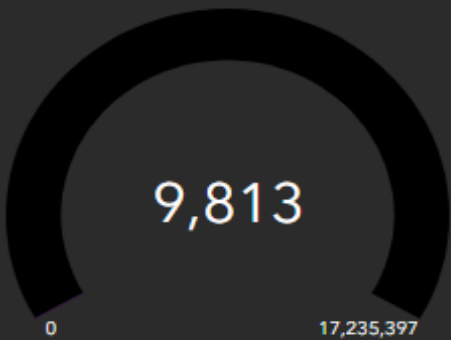
National Parks Service



National Recreation Area



Fish and Wildlife Service



References (Blue text indicates link to data sources)

Commodity Prices

[Nevada Bureau of Mines and Geology SP 15](#)
[USGS Mineral Commodity Summaries](#)
[USGS Historical Statistics for Mineral and Material Commodities in the United States \(Commodity Values in Metric Tons\)](#)
[Gold-Silver-Copper Prices 1900-1998](#)
[Gold Prices 1833-1967](#)
[Silver Prices 1859-1900](#)
[Oil Prices](#)
[U.S. Bureau of Labor Statistics CPI Inflation Calculator](#)

Online Reference Documents

[1926 Lake Denmark, New Jersey Explosion](#)
[A Very Brief History of the U.S. Bureau of Reclamation](#)
[United States Forest Service](#)
[Avi Kwa Ame](#)
[About the Fallon Training Range](#)
[BLM Wilderness Study Documents](#)
[History of the Hawthorne Army Depot](#)
[History of the Toiyabe National Forest](#)
[History of the U.S. Fish and Wildlife Service](#)
[Mining Districts of Nevada](#)
[Nevada Mineral Industry Reports 1979-Present](#)
[Nevada Bureau of Mines and Geology SP 15](#)
[Nevada Test Site](#)
[Northern Nevada Land Conservation and Economic Development Act](#)
[Railroad Land Grants](#)
[The History of School Trust Lands in Nevada: The No Child Left Behind Act of 1864](#)
[The System of a River](#)
[The History of Wilderness in Nevada and the United States](#)
[Spring Mountains National Recreation Area](#)
[State Select Lands Polygons](#)
[Southern Nevada Public Land Management Act of 1998](#)
[SNPLMA](#)
[USFS RNA's](#)
[USGS Open File Report 2004-1244 \(mine points, highways, railroads\)](#)
[Wendover Air Force Base](#)
[Wilderness Act](#)

Books/Other Publications

[Leshy, John D., 1987 "The Mining Law, a Study in Perpetual Motion" 521 p.](#)
[Parsons Behle & Latimer, 2018 "U.S. Mining Law, One Day Short Course Handbook" 229 p.](#)
[Ricketts, A.H., 1931, American mining law: California State Division of Mines Bulletin 98, 811 p.](#)



Mission: To encourage and assist in the responsible exploration for, and the production of, minerals, oil, gas, and geothermal energy which are economically beneficial to the state. This is the Nevada Division of Minerals' public platform for exploring and downloading our open data.

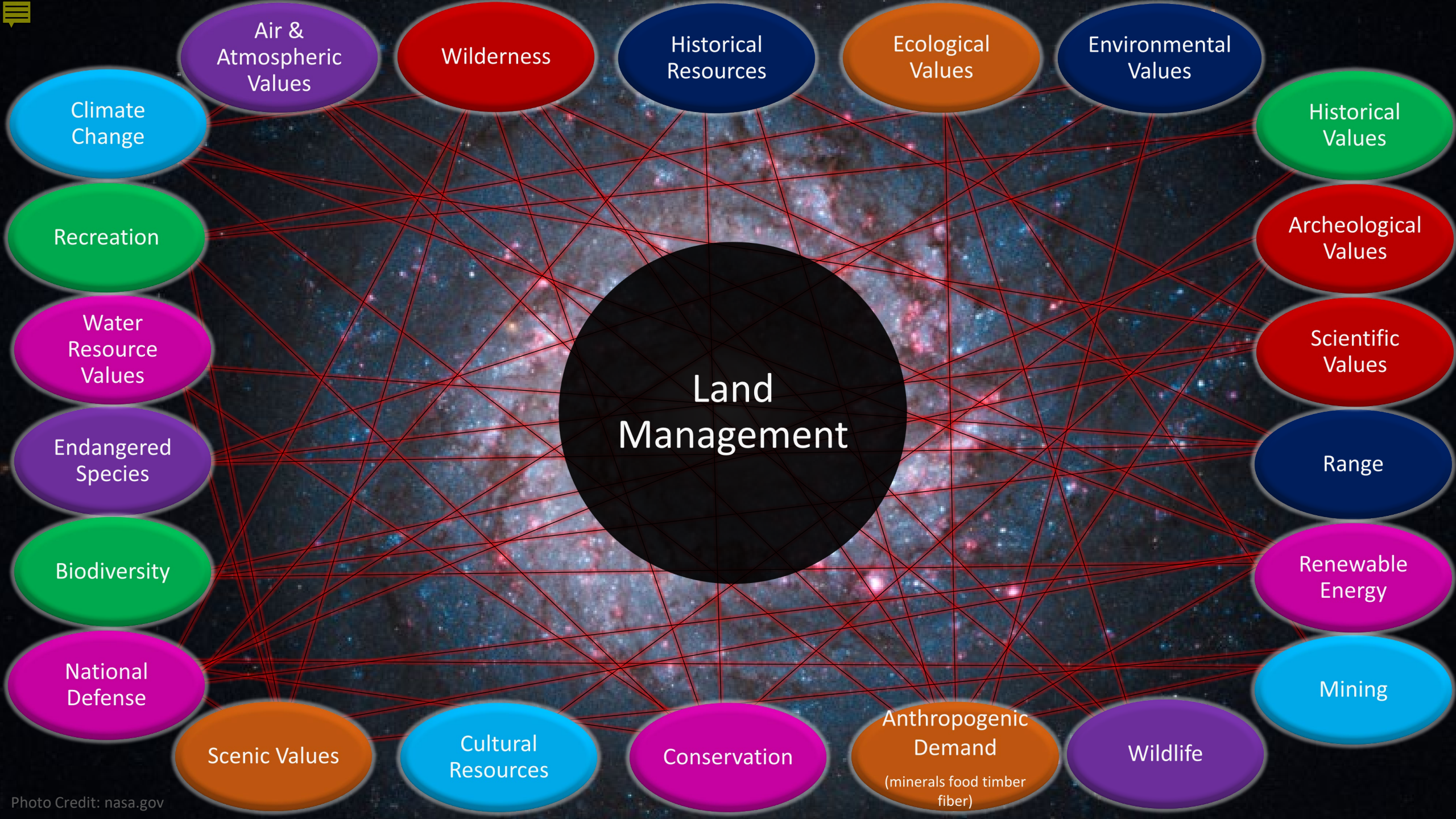
Disclaimer

The Nevada Division of Minerals (NDOM hereafter) assumes no responsibility for errors or omissions. No warranty is made by NDOM as to the accuracy, reliability, or completeness of these data for individual use or aggregate use with other data; nor shall the act of distribution to contractors, partners, or beyond, constitute any such warranty for individual or aggregate data use with other data. In no event shall NDOM have any liability whatsoever for payment of any consequential, incidental, indirect, special, or tort damages of any kind, including, but not limited to, any loss of profits arising out of the use or reliance on this data.

Featured Content!



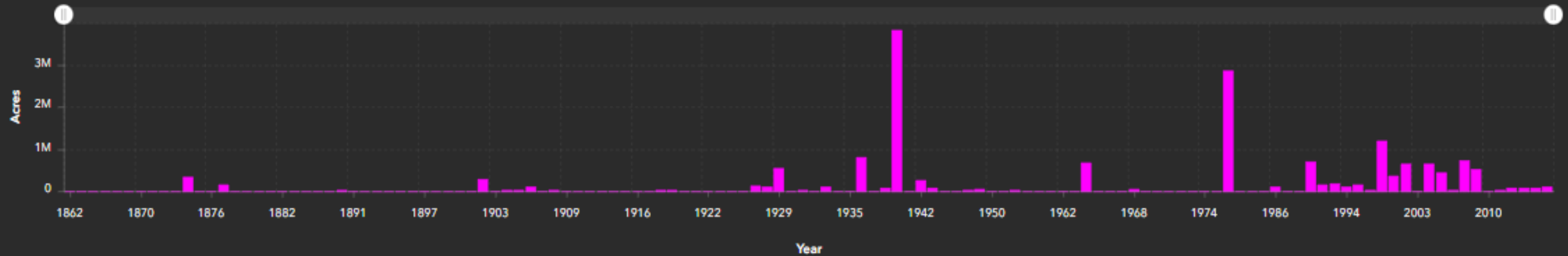




Land Withdrawal Dashboard

Lands Completely or Effectively Withdrawn from Mineral Entry Statistics, and a Few Extra Numbers for Thought

Annual Acres of Federal Land Withdrawn (Effectively or Completely) from Mineral Entry Over Time



~64,500 acres without an interpreted mineral withdrawal date assignment, (mostly Bureau of Reclamation and County) this is a work in progress.

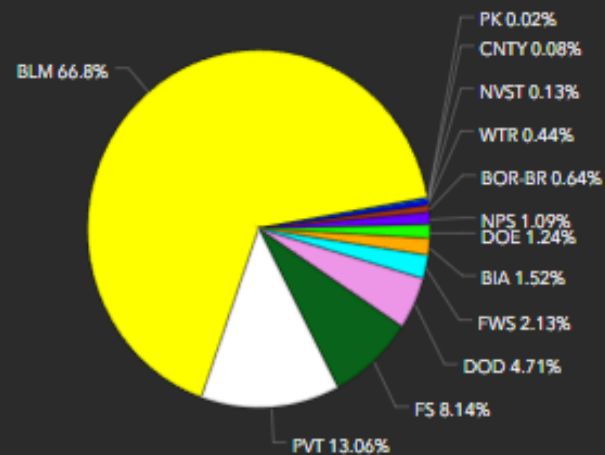
Annual Withdrawal Totals

Cumulative Withdrawal Totals

Nevada Surface Management Agency (Data as of August, 2022)

Total Acres in Nevada: 70,722,119

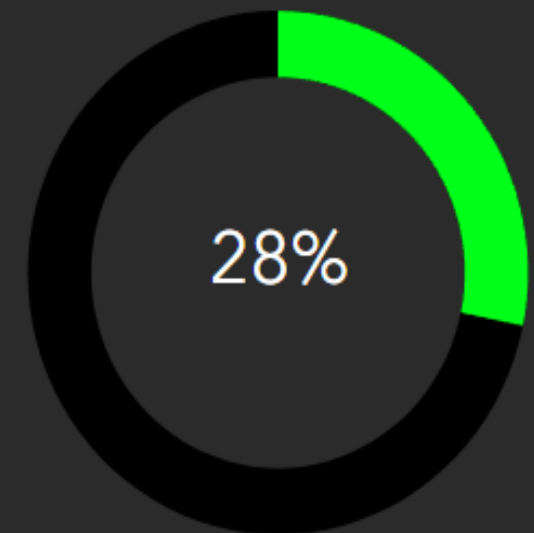
Total Acres of Federal Lands in Nevada: 61,011,792



Total Federal Lands Withdrawn (Effectively or Completely) from Mineral Entry

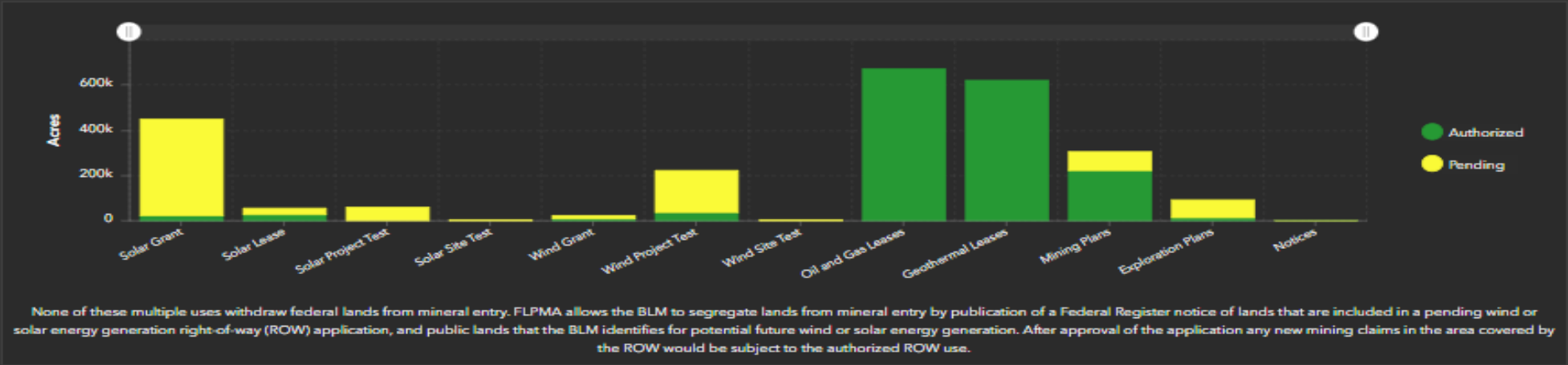
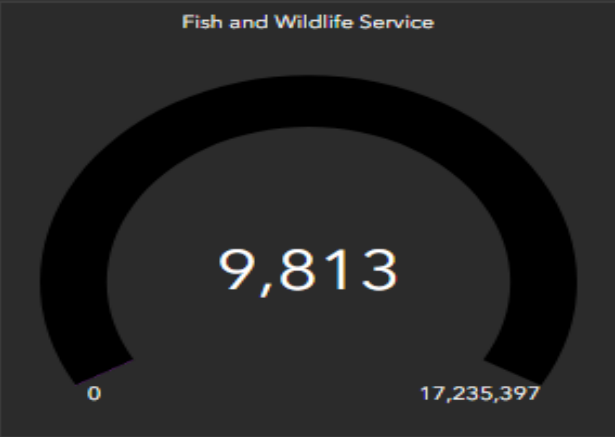
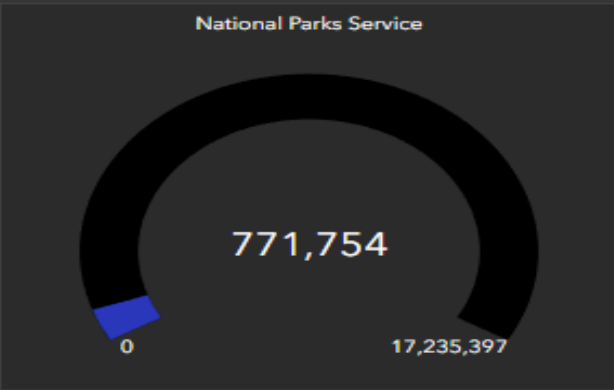
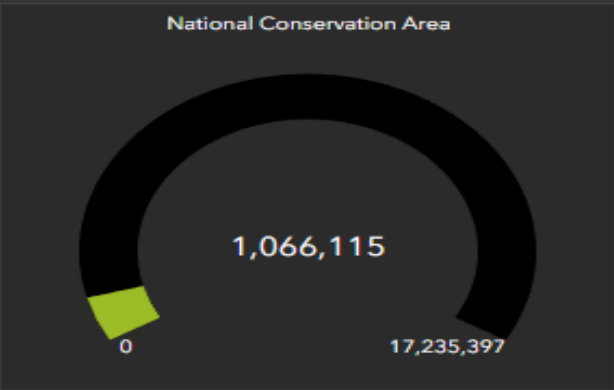
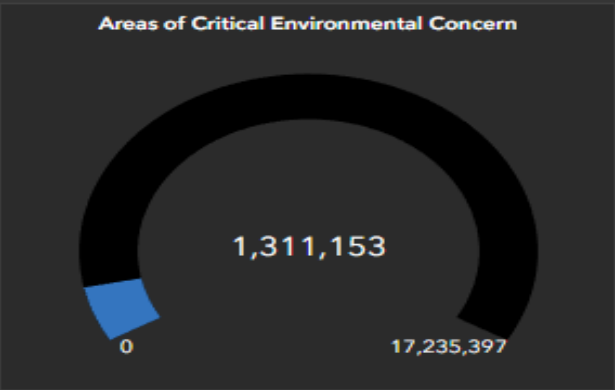
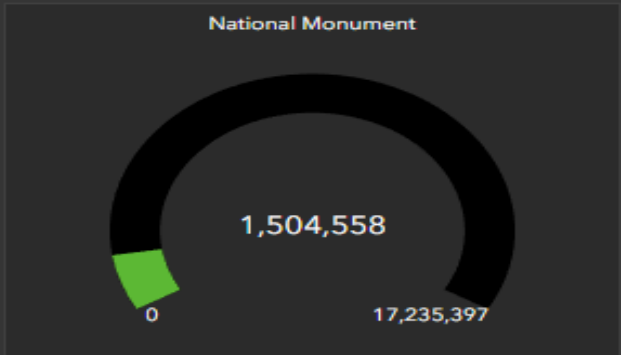
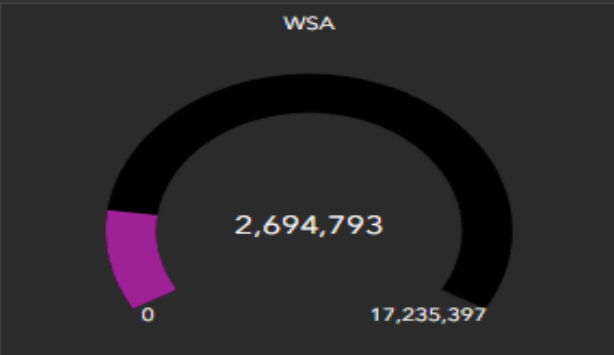
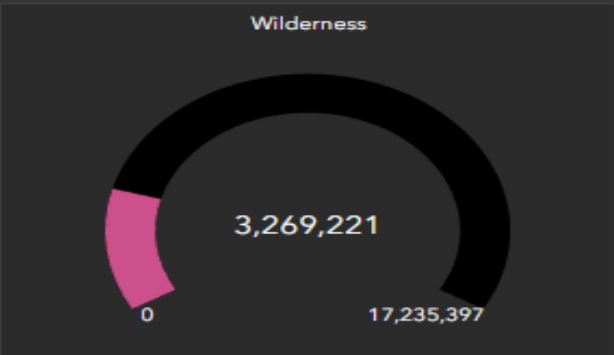
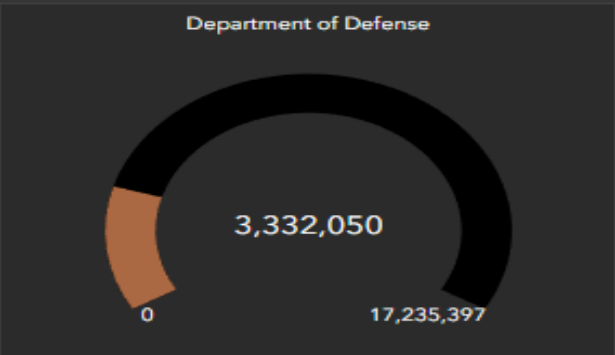


Total Federal Lands Withdrawn (Effectively or Completely) from Mineral Entry



Values shown in the gauges will exceed the total land withdrawal acreage reported here. Special land management designations commonly overlap and each gauge is querying all features that include the land designation shown as the gauge title.

All Values in Acres





Nevada Mining and Land Withdrawal History Experience



Minerals

- Disclaimer
- Pre 1850 M
- 1850s M
- 1860s M
- 1870s M
- 1880s M
- 1890s M
- 1900s M
- 1910s M
- 1920s M
- 1930s M
- 1940s M
- 1950s M
- 1960s M
- 1970s M
- 1980s M
- 1990s M
- 2000s M
- 2010s M
- 2020s M
- 2020s M ?

Land

- Disclaimer
- Pre 1850 L
- 1850s L
- 1860s L
- 1870s L
- 1880s L
- 1890s L
- 1900s L
- 1910s L
- 1920s L
- 1930s L
- 1940s L
- 1950s L
- 1960s L
- 1970s L
- 1980s L
- 1990s L
- 2000s L
- 2010s L
- 2020s L
- 2020s L ?

Land Thoughts - 2020s

With so many hands in the pot and so many interests at stake (natural resource conservation, climate change, materials production, supply and demand, green energy, international environmental concerns) it is important to keep a watchful, holistic, and integrated eye on land issues that arise. It is equally important to monitor legislation, as pointed out in a report prepared for the Division of Minerals in 2010, "Once the initial legislation has been enacted, it paves the way for future legislative acts that solidify its foundation". By reading the historical land narrative it becomes abundantly apparent that once the legislation is in place land withdrawals can come quickly, and from many directions. However, concerns also need to be evaluated from many directions to make balanced land decisions for our future.

So what's up next?

On April 3, 2023 a proposed rule was published to the Federal Register by the BLM titled "Conservation and Landscape Health". This proposed rule would make conservation a "use" within FLPMA's multiple use framework, would

SFA

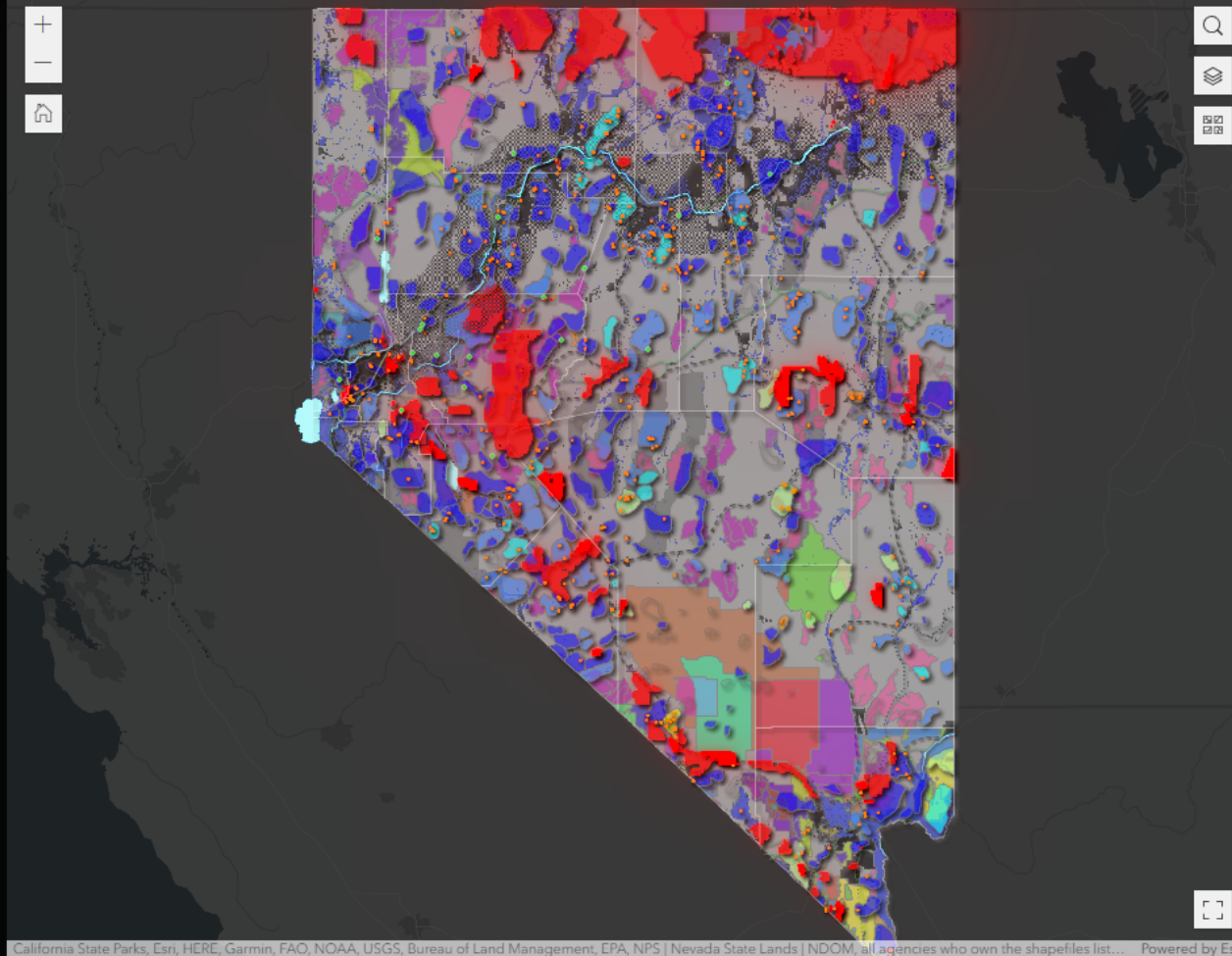
ADPP USFSDData



BLM NVCA ARMPA GRSG Sagebrush Focal Area 2015



FRTC Boundary - LandStatus







General Overview

Demo Video

Map Layers

Legend

Filter the Data

Dataset Downloads

General Information - PLEASE READ!

Claim data is presented on a per section basis. If a claim falls in more than one section it will have more than one listing. Therefore, counts and sums for areas selected/filtered will be more than the actual value.

There are several layers in this map, please visit the **"Map Layers"** tab and turn off any unnecessary layers to your analysis to simplify the view.

Filtering the Data

Click on the **"Filter the data"** tab above. Click on the data category you want to analyze then choose the filter type. You can either use "Selecting features from the data source", select the layer you want to filter on from the second drop down, and then **use the select tool located in the map (square with an arrow)** and pick the area you wish to analyze, or use the "drawn graphic" to draw your own area. Apply buffers as needed.

After filtering the data, you can export the results to a .csv file by clicking on the 4 circles in the upper right hand corner of the list. On the data tab in Excel, choose remove duplicates and use the "SerialNumber" field to remove duplicates. You can also export the data to a GeoJSON file and add to ArcGIS or QGIS

Instructions for importing GeoJSON files

[Click Here to view in full screen mode](#)

< 1 of 2660 >



BR, National Monument

Polygon ID: 3

Interpreted Withdrawal Year (effective or complete): 1902

Withdrawal Type(s): BR, National Monument (Scroll down to see the list of abbreviations)

Acreage: 1,229.73

ACEC Name:

National Monument or National Conservation Area Name: Ave Kwa Arne

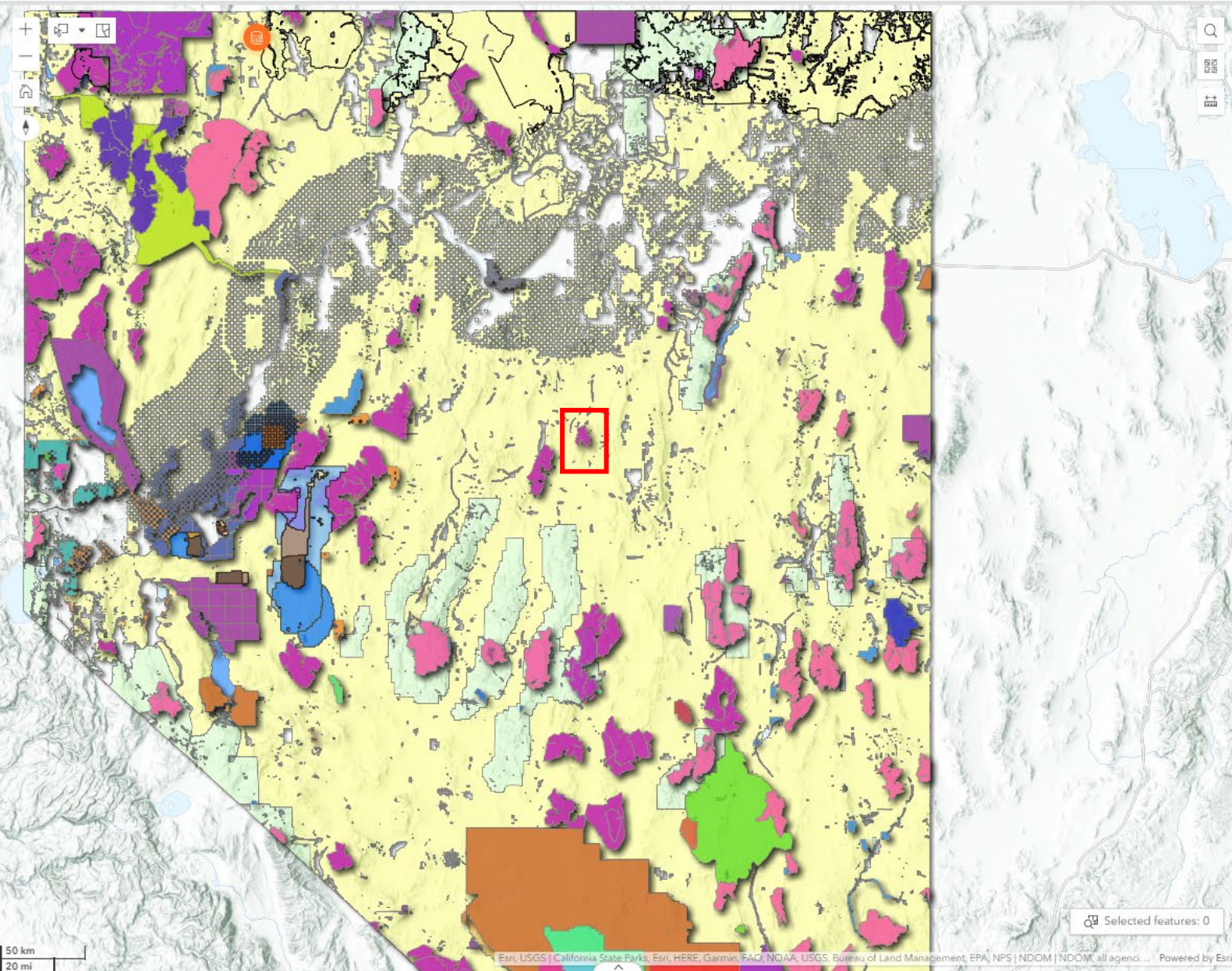
WSA Name:

Wilderness Name:

Carson City District RMP:

Natural Recreation Area Name:

USFS SIMA Name:



To suggest layers for this map please email the data source to impatterson@minerals.nv.gov



Nevada BLM Notices and Plans

Nevada Exploration Plans

- CANCELLED
- PENDING
- AUTHORIZED
- EXPIRED
- CLOSED

Nevada Mining Plans

- CANCELLED
- PENDING
- AUTHORIZED
- EXPIRED
- CLOSED

Nevada Notices

- CANCELLED
- PENDING
- AUTHORIZED
- EXPIRED
- CLOSED

Nevada Mining Claims

< 471 of 2660 >



WSA

Polygon ID: 483

Interpreted Withdrawal Year (effective or complete): 1980

Withdrawal Type(s): WSA (Scroll down to see the list of abbreviations)

Acreage: 15,179.29

ACEC Name:

National Monument or National Conservation Area Name:

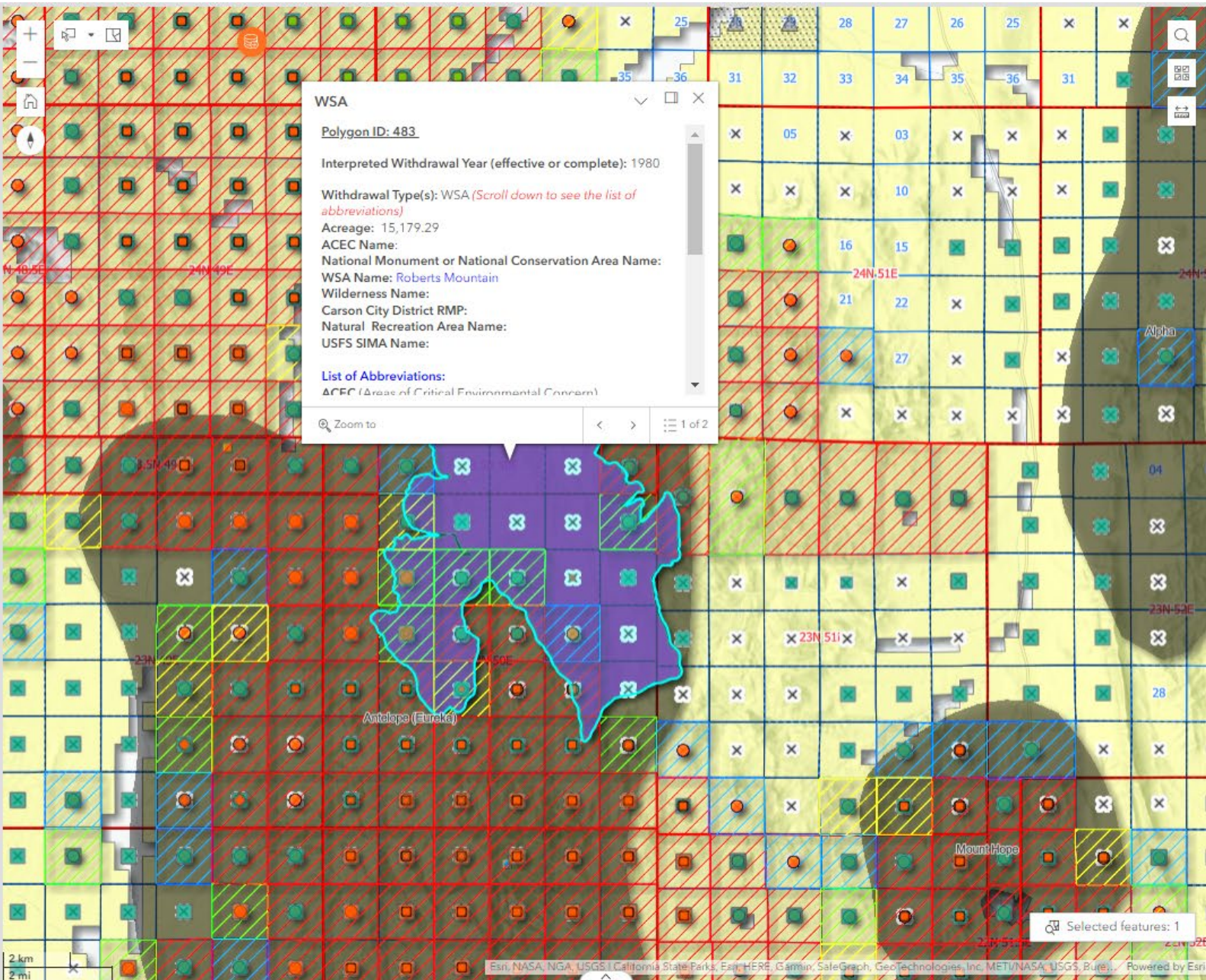
WSA Name: [Roberts Mountain](#)

Wilderness Name:

Carson City District RMP:

Natural Recreation Area Name:

USFS SIMA Name:



To suggest layers for this map please email the data source to Impatterson@minerals.nv.gov



Nevada Active, Pending, Submitted, and Filed Mining Claims Listings Points >

***Claims point listings with annual assessment/maintenance fee calculations (March 2022)** >

****Claims per section density and annual assessment/maintenance fees paid sum and average (March 2022)** >

Nevada Notices >

Nevada Exploration Plans >

Nevada Mining Plans >

Historic mining districts - 2022 (NDOM update) >

Production of Minerals in Nevada 1987-Present >

Authorized Geothermal Lease Points >

Authorized Oil and Gas Lease Points >

You must filter the appropriate layer in order for these values to populate. The asterix correspond to the layer you must filter from above.

*Sum of claim fees paid for selected CLAIM LISTINGS: \$ 0

**Average fees paid per section for SELECTED SECTIONS: \$ 0

**Sum of claim listings for SELECTED SECTIONS: 0

< 471 of 2660 >



WSA

Polygon ID: 483

Interpreted Withdrawal Year (effective or complete): 1980

Withdrawal Type(s): WSA (Scroll down to see the list of abbreviations)

Acreage: 15,179.29

ACEC Name:

National Monument or National Conservation Area Name:

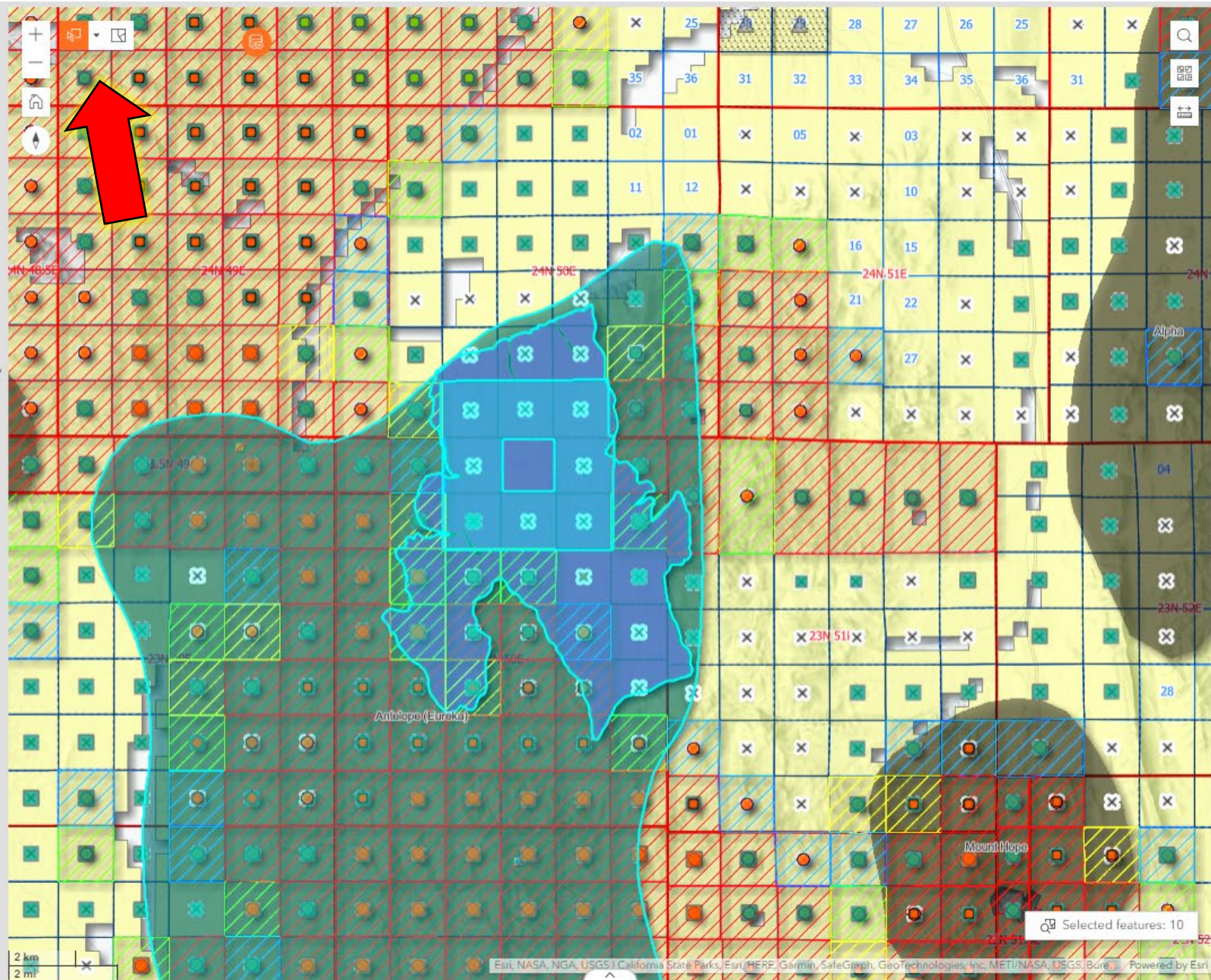
WSA Name: Roberts Mountain

Wilderness Name:

Carson City District RMP:

Natural Recreation Area Name:

USFS SIMA Name:



← *Claims point listings with annual assessment/maintenance fee calculations (March 2022)

Spatial filter

Choose the filter type

Selecting features from data source

Choose a filter layer

Lands Withdrawn From Mineral Entry (Completely or Effectively)

- ✓ Lands Withdrawn From Mineral Entry (Completely or Effectively)
- FRTC Boundary - Proposed
- 2015 ADPP USFS Data Sagebrush Focal Area
- 2015 BLM NVCA ARMPA GRSG Sagebrush Focal Area
- Sections With Solar ROW
- Sections With Wind ROW
- Developable Area - Solar Energy Zone (Withdrawn from ME)

Apply

Reset

You must filter the appropriate layer in order for these values to populate. The asterix correspond to the layer you must filter from above.

*Sum of claim fees paid for selected CLAIM LISTINGS: \$ 0

**Average fees paid per section for SELECTED SECTIONS: \$ 0

**Sum of claim listings for SELECTED SECTIONS: 0

< 471 of 2660 >

88

WSA

Polygon ID: 483

Interpreted Withdrawal Year (effective or complete): 1980

Withdrawal Type(s): WSA (Scroll down to see the list of abbreviations)

Acreage: 15,179.29

ACEC Name:

National Monument or National Conservation Area Name:

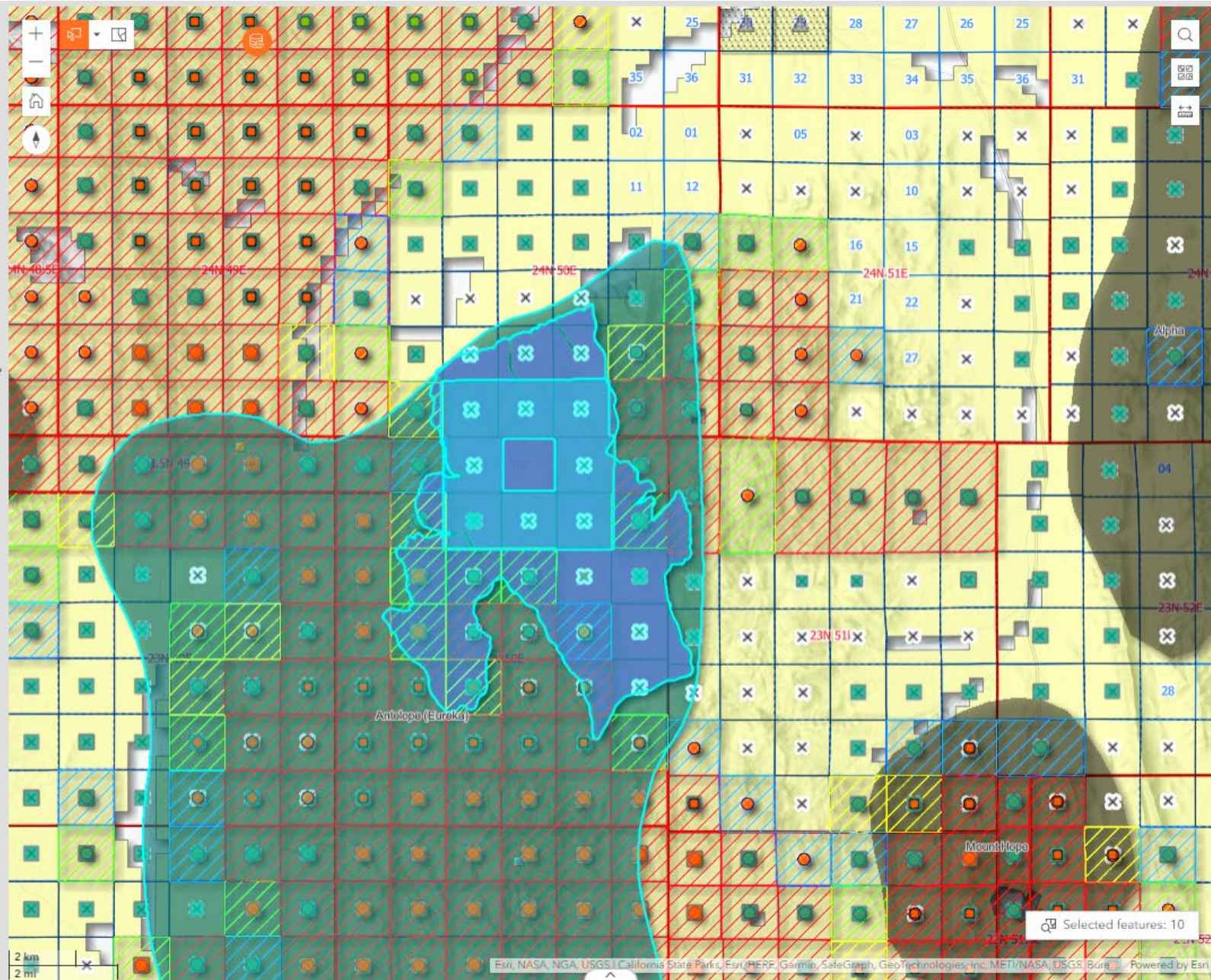
WSA Name: Roberts Mountain

Wilderness Name:

Carson City District RMP:

Natural Recreation Area Name:

USFS SIMA Name:



To suggest layers for this map please email the data source to Impatterson@minerals.nv.gov

← Results

Features displayed: 1 - 100 / 1180

▼ ICE # 71

Annual Maintenance and/or Assessment Fees Paid:
\$4,595

This **LODE CLAIM** claim, is a claim that was located on -6/1/1985- and closed on -12/31/2022 (if active closed date is not applicable) that was located by **RED CANYON CORP.**

For more information on the claimant you can search the BLM's MLRS database by [CLICKING HERE](#)

Admin State = **NV**
Claimant Name = **RED CANYON CORP HAS TO BE ALL CAPS**
Select disposition you are looking for.

The claim name is **ICE # 71**. The BLM Serial Number is **NV101302912**

For more information on this claim you can search the BLM's MLRS Database by copying: **NV101302912** and [CLICKING HERE](#). Paste the serial number into the **Serial Number Box** and

< 1 2 ... 12 > 100 /page

You must filter the appropriate layer in order for these values to populate. The asterix correspond to the layer you must filter from above.

*Sum of claim fees paid for selected CLAIM LISTINGS: \$ 884,745

**Average fees paid per section for SELECTED SECTIONS: \$ 0

**Sum of claim listings for SELECTED SECTIONS: 0

< 471 of 2660 >



WSA

Polygon ID: 483

Interpreted Withdrawal Year (effective or complete): 1980

Withdrawal Type(s): WSA (Scroll down to see the list of abbreviations)

Acreage: 15,179.29

ACEC Name:

National Monument or National Conservation Area Name:

WSA Name: [Roberts Mountain](#)

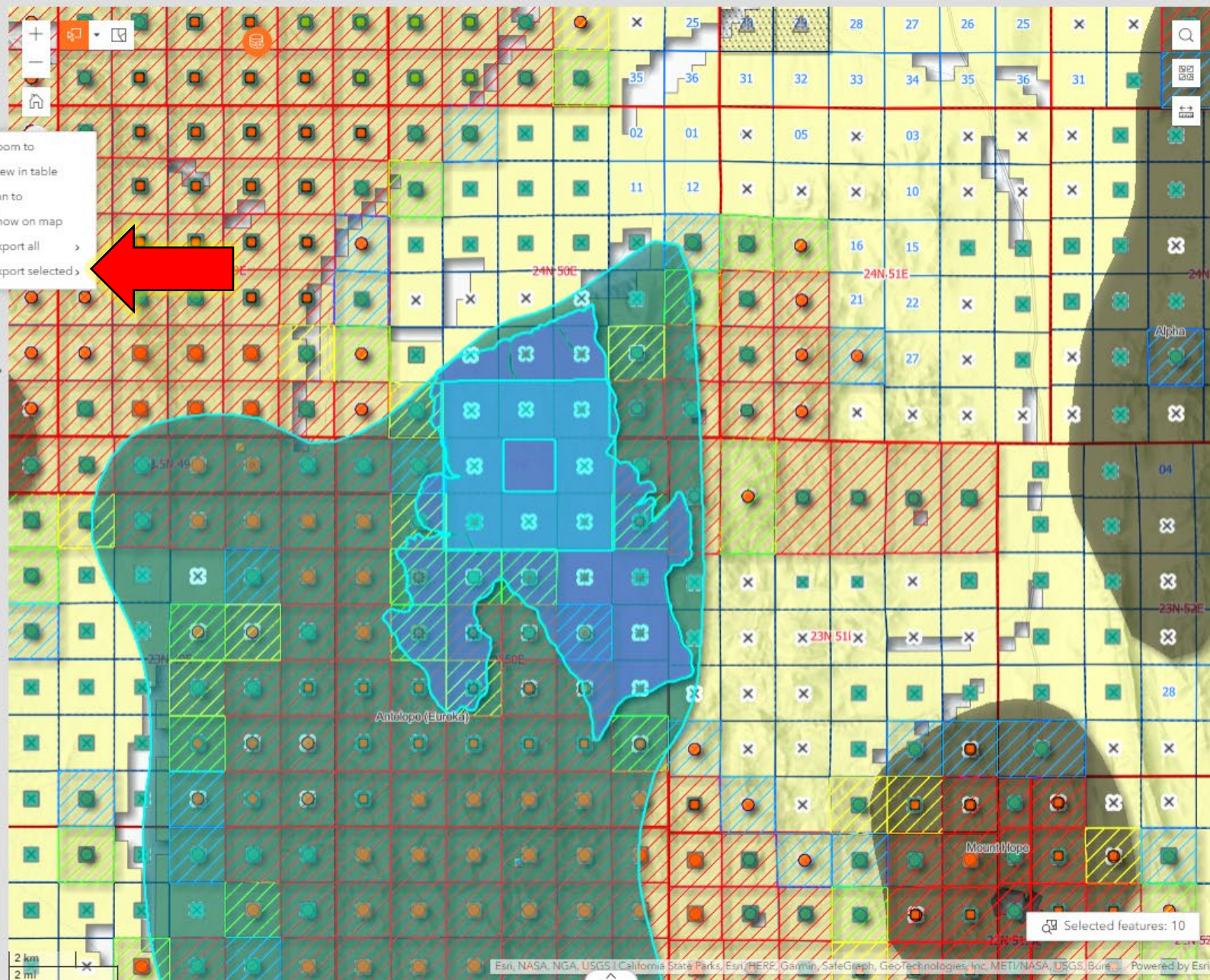
Wilderness Name:

Carson City District RMP:

Natural Recreation Area Name:

USFS SIMA Name:

- Zoom to
- View in table
- Pan to
- Show on map
- Export all
- Export selected



Selected features: 10

← ****Claims per section density and annual assessment/maintenance fees paid sum and average (March 2022)**

Spatial filter

Choose the filter type

Selecting features from data source

✓ Selecting features from data source

Drawn graphic

Relationship

Intersect

Buffer distance

0 Miles

Apply

Reset

You must filter the appropriate layer in order for these values to populate. The asterix correspond to the layer you must filter from above.

*Sum of claim fees paid for selected CLAIM LISTINGS: \$ 884,745

**Average fees paid per section for SELECTED SECTIONS: \$ 0

**Sum of claim listings for SELECTED SECTIONS: 0

< 471 of 2660 >



WSA

Polygon ID: 483

Interpreted Withdrawal Year (effective or complete): 1980

Withdrawal Type(s): WSA (Scroll down to see the list of abbreviations)

Acreage: 15,179.29

ACEC Name:

National Monument or National Conservation Area Name:

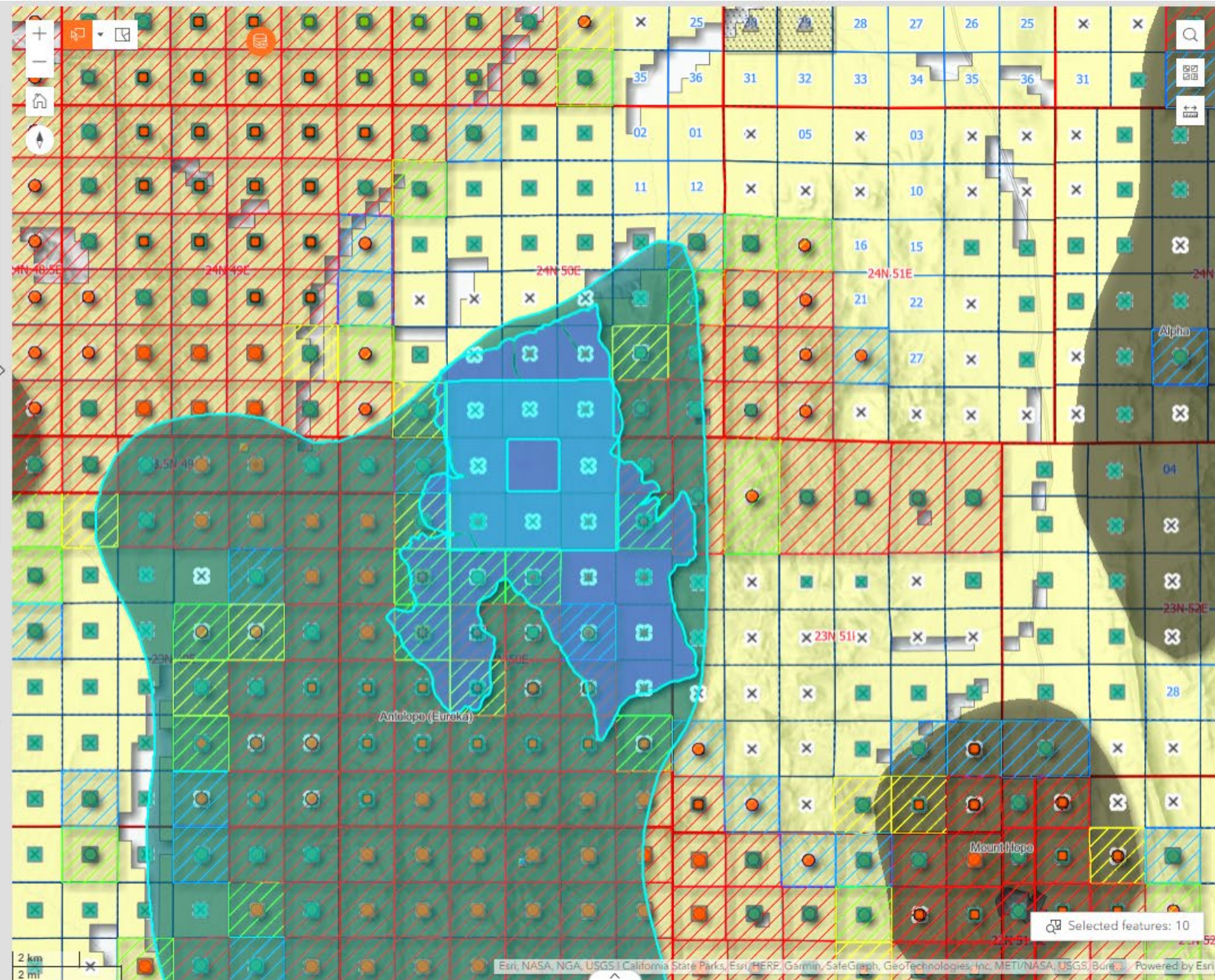
WSA Name: [Roberts Mountain](#)

Wilderness Name:

Carson City District RMP:

Natural Recreation Area Name:

USFS SIMA Name:



To suggest layers for this map please email the data source to lpatterson@minerals.nv.gov

← Results

Features displayed: 1 - 40 / 40

► Claim Fee Statistics

► Claim Fee Statistics

► Claim Fee Statistics

► Claim Fee Statistics

► Claim Fee Statistics

► Claim Fee Statistics

► Claim Fee Statistics

► Claim Fee Statistics

< 1 > 100 /page

You must filter the appropriate layer in order for these values to populate. The asterix correspond to the layer you must filter from above.

*Sum of claim fees paid for selected CLAIM LISTINGS: \$ 884,745

**Average fees paid per section for SELECTED SECTIONS: \$ 768.869

**Sum of claim listings for SELECTED SECTIONS: 3,275

WSA

Polygon ID: 483

Interpreted Withdrawal Year (effective or complete): 1980

Withdrawal Type(s): WSA (Scroll down to see the list of abbreviations)

Acreage: 15,179.29

ACEC Name:

National Monument or National Conservation Area Name:

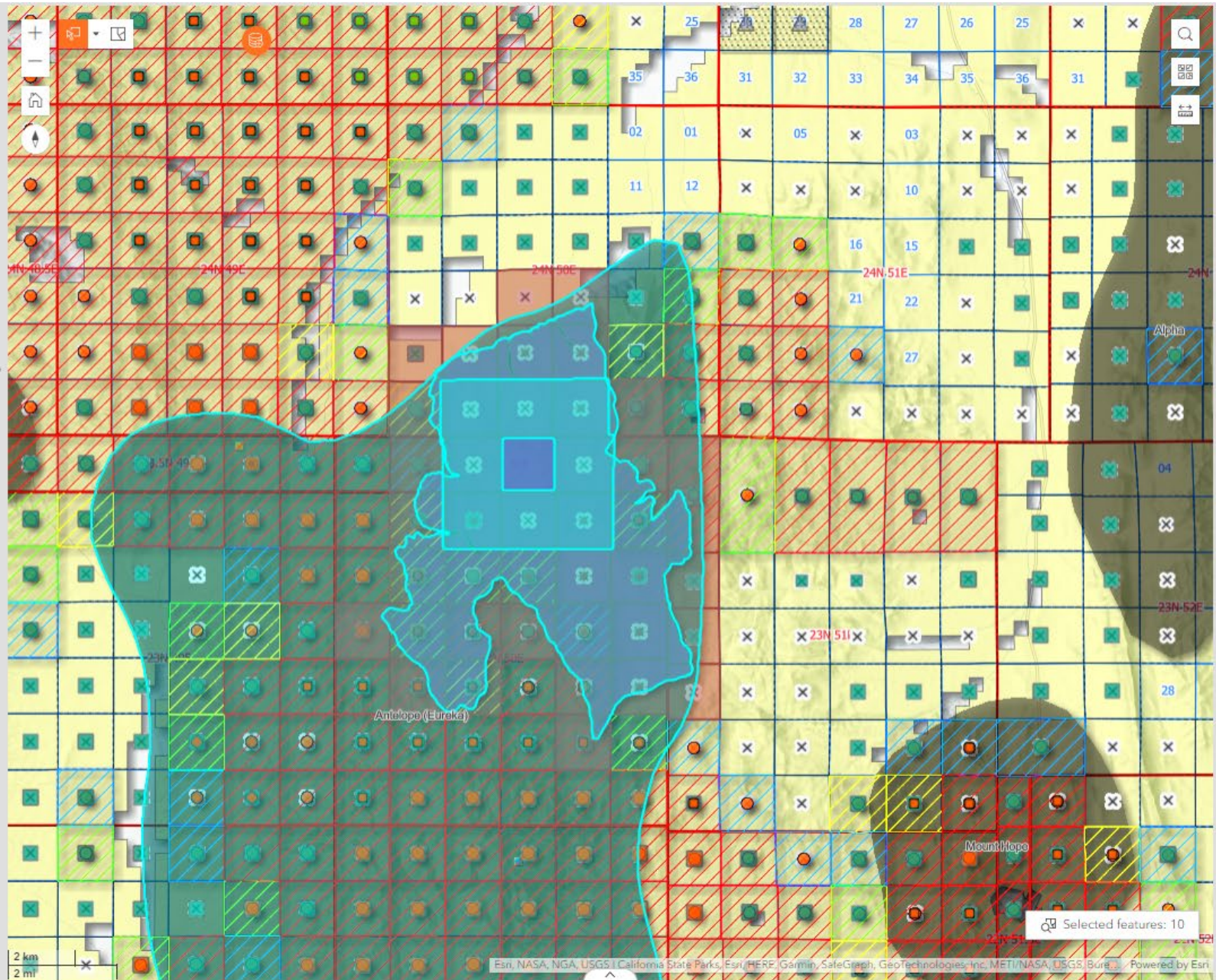
WSA Name: [Roberts Mountain](#)

Wilderness Name:

Carson City District RMP:

Natural Recreation Area Name:

USFS SIMA Name:



To suggest layers for this map please email the data source to Impatterson@minerals.nv.gov



Nevada Active, Pending, Submitted, and Filed Mining Claims Listings Points >

*Claims point listings with annual assessment/maintenance fee calculations (March 2022) >

**Claims per section density and annual assessment/maintenance fees paid sum and average (March 2022) >

Nevada Notices >

Nevada Exploration Plans >

Nevada Mining Plans >

Historic mining districts - 2022 (NDOM update) >

Production of Minerals in Nevada 1987-Present >

Authorized Geothermal Lease Points >

Authorized Oil and Gas Lease Points >

You must filter the appropriate layer in order for these values to populate. The asterix correspond to the layer you must filter from above.

*Sum of claim fees paid for selected CLAIM LISTINGS: \$ 884,745

**Average fees paid per section for SELECTED SECTIONS: \$ 768.869

**Sum of claim listings for SELECTED SECTIONS: 3,275

< 471 of 2660 >



WSA

Polygon ID: 483

Interpreted Withdrawal Year (effective or complete): 1980

Withdrawal Type(s): WSA (Scroll down to see the list of abbreviations)

Acreage: 15,179.29

ACEC Name:

National Monument or National Conservation Area Name:

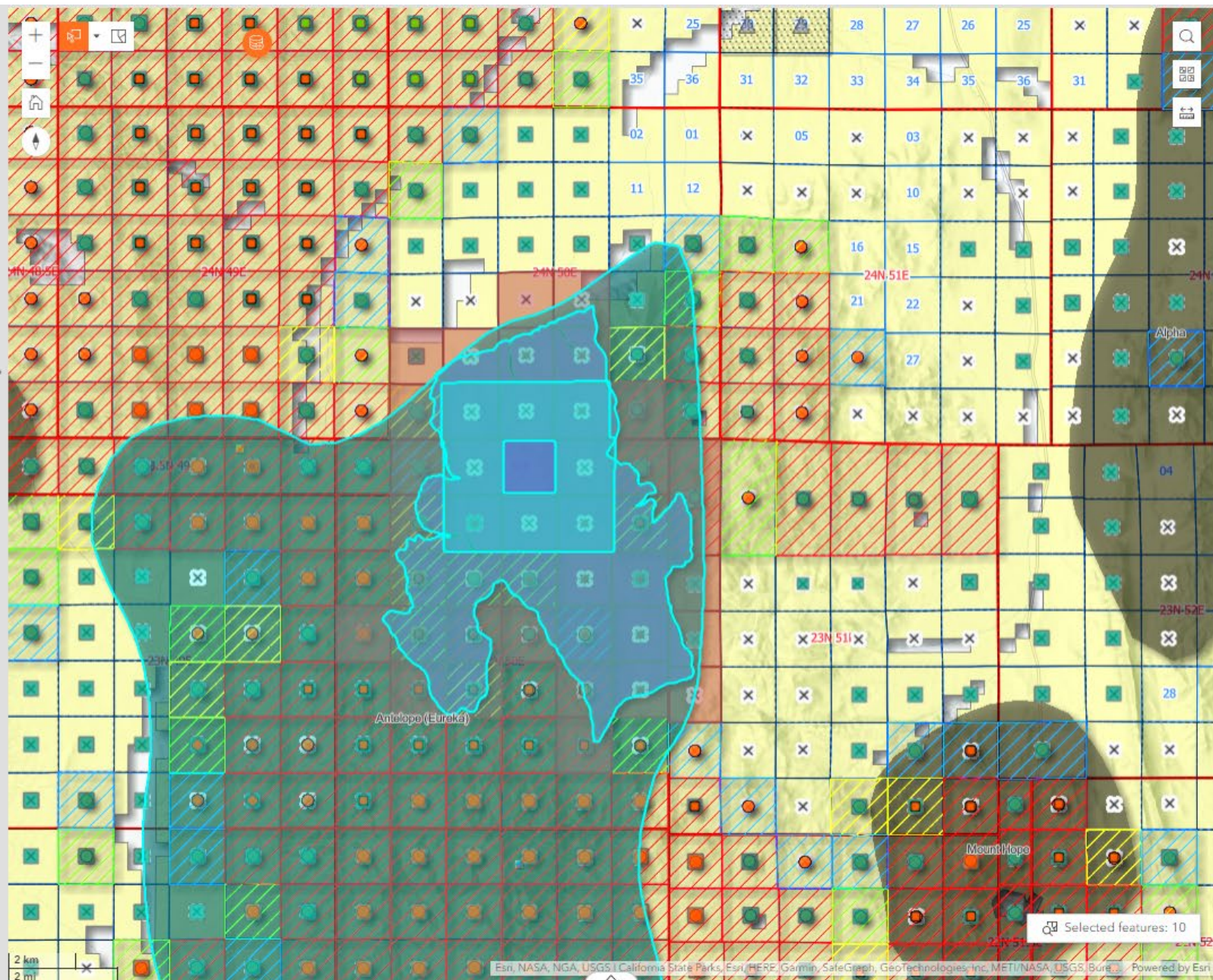
WSA Name: [Roberts Mountain](#)

Wilderness Name:

Carson City District RMP:

Natural Recreation Area Name:

USFS SIMA Name:

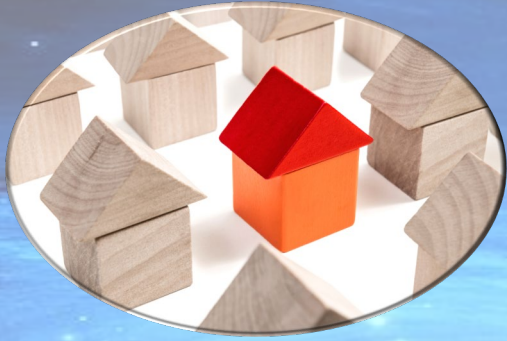


To suggest layers for this map please email the data source to Impatterson@minerals.nv.gov



Knowledge Itself is the True Core of a Land Management Star

Construction Materials



Wilderness

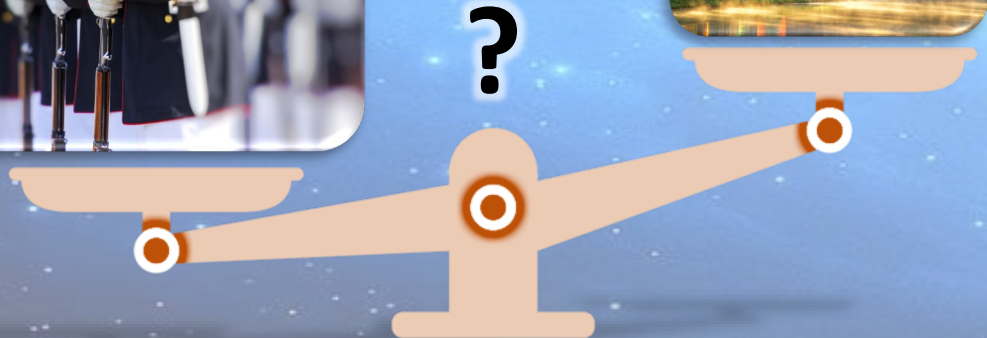
Human Rights



Technology



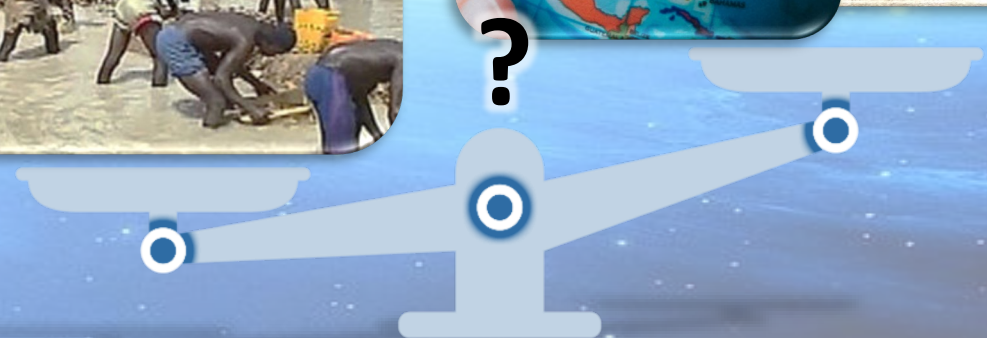
National Defense



Recreation



Human Rights



Legend

Average Annual Assessment/Maintenance
Claim Fees Paid Per Section (All MC in
MLRS, 03/08/2022)

Average Fees Paid Per Section

- \$3,493 - \$8,486
- \$3,270 - \$3,492
- \$3,048 - \$3,269
- \$2,825 - \$3,047
- \$2,602 - \$2,824
- \$2,380 - \$2,601
- \$2,157 - \$2,379
- \$1,935 - \$2,156
- \$1,712 - \$1,934
- \$1,490 - \$1,711
- \$1,267 - \$1,489
- \$1,044 - \$1,266

Free Data Downloads for Claims,
Notice, & Plan Data for the
Entire (contiguous) Western US

C.L.A.I.M.S.

Miningclaim.org

Thank You!

Follow me on LinkedIn for
updates on data and web
applications.

Impatterson@minerals.nv.gov

Swipe layer

Claim Fees Per Section Sum