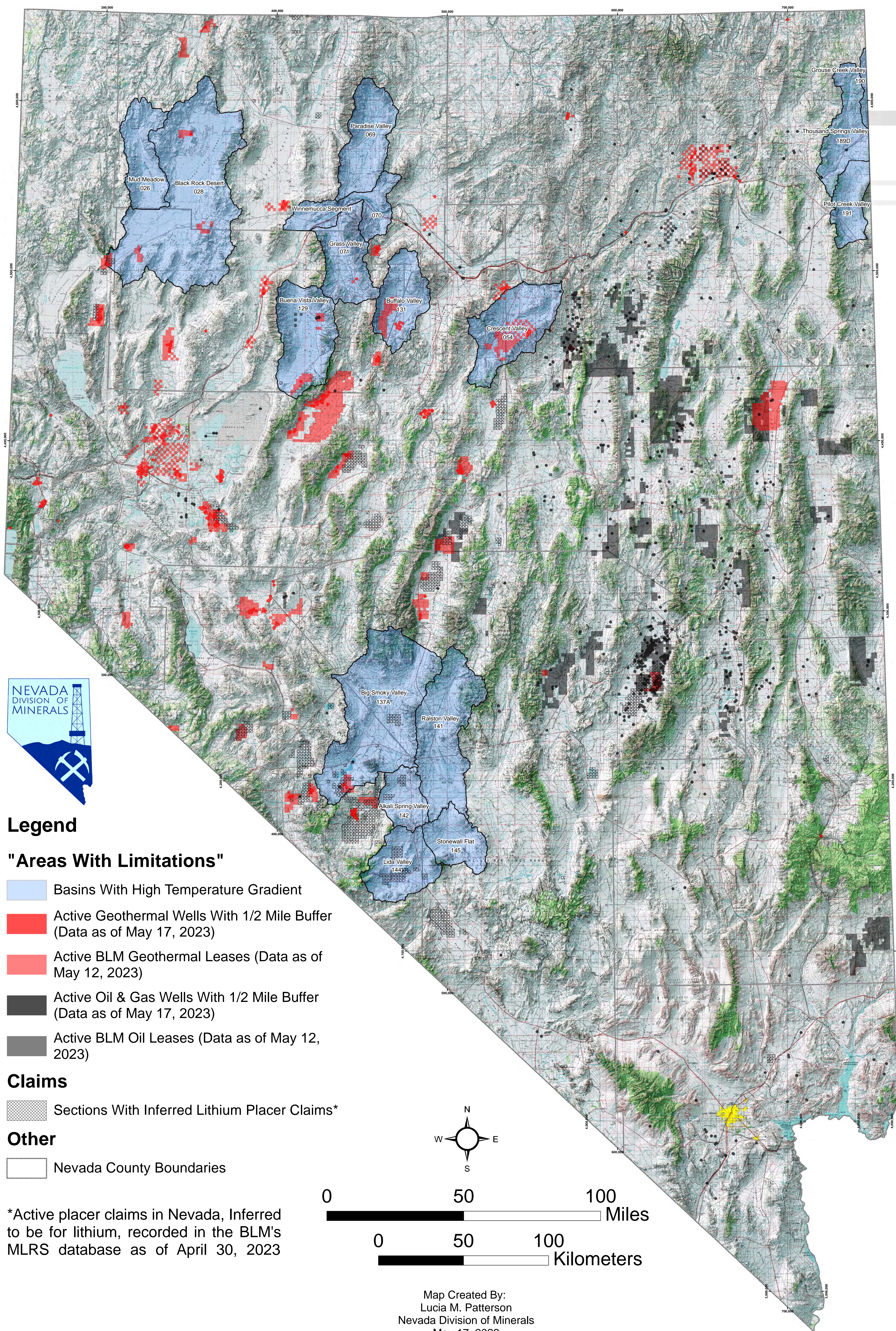


Oil, Gas, and Geothermal Resources and Groundwater Basins with High Temperature Gradients



Legend

"Areas With Limitations"

- Basins With High Temperature Gradient
- Active Geothermal Wells With 1/2 Mile Buffer (Data as of May 17, 2023)
- Active BLM Geothermal Leases (Data as of May 12, 2023)
- Active Oil & Gas Wells With 1/2 Mile Buffer (Data as of May 17, 2023)
- Active BLM Oil Leases (Data as of May 12, 2023)

Claims

- Sections With Inferred Lithium Placer Claims*

Other

- Nevada County Boundaries

*Active placer claims in Nevada, Inferred to be for lithium, recorded in the BLM's MLRS database as of April 30, 2023

