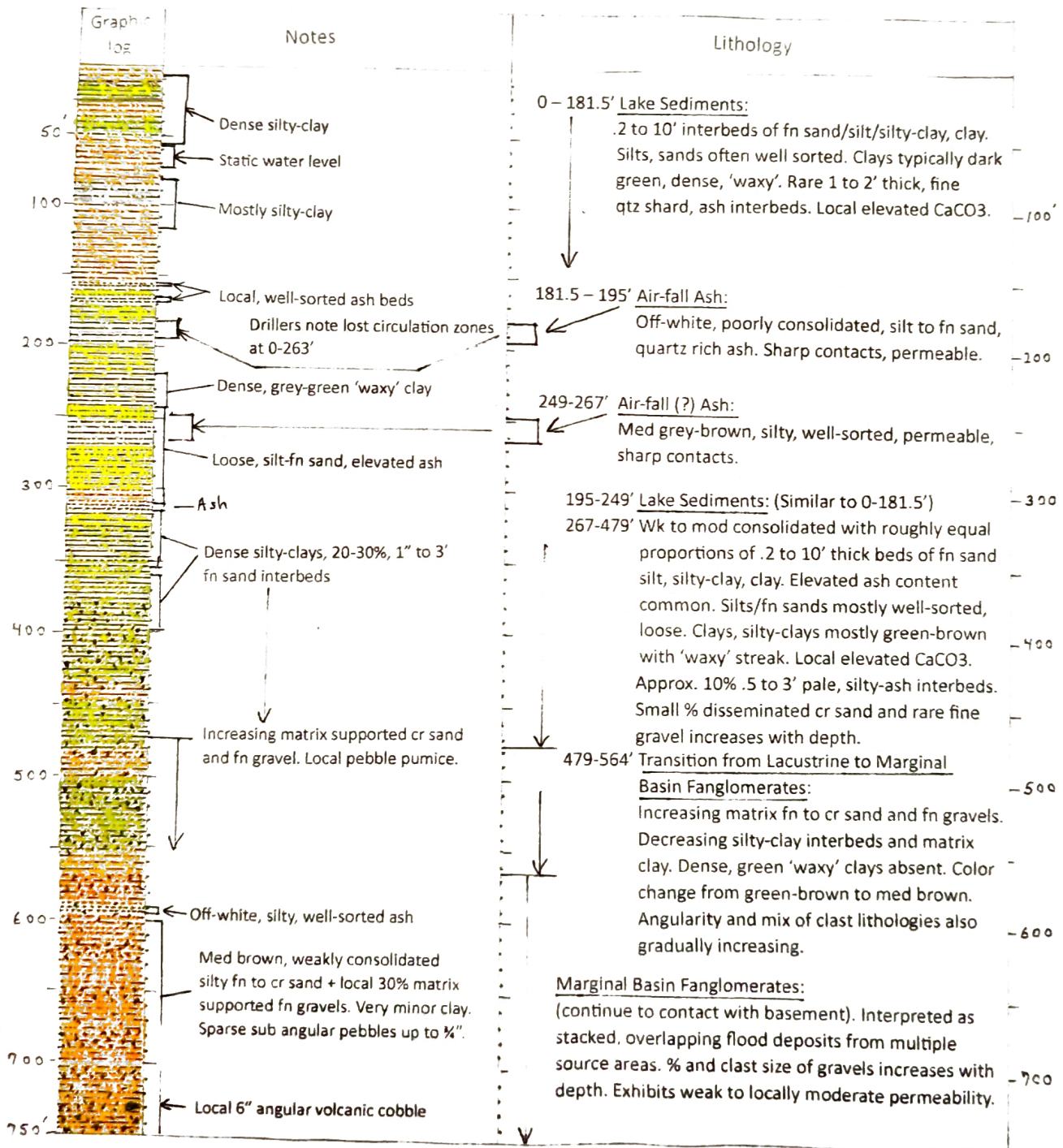




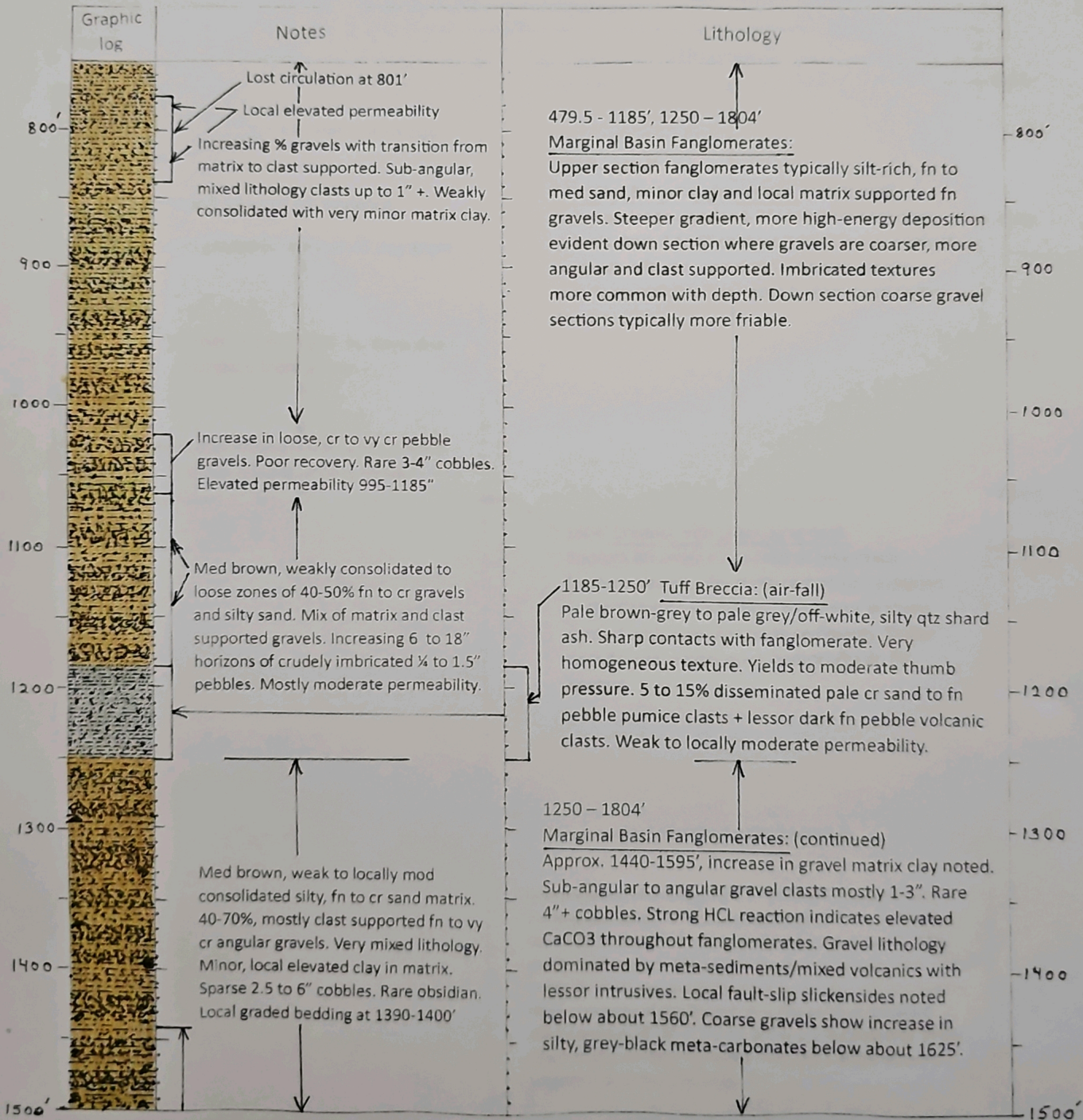
Drilling Summary:  
 16" casing 0-266  
 7 7/8" tri-cone 'pilot' hole 290-1820  
 14 1/2" tri-cone rotary to 1824'  
 7" well casing 0-1824'  
 (perforated casing set 1300 to 1800')

Collar elev. 4260'  
 (NAD 83) 448927 E  
 4183979 N  
 Vertical, 1824' total depth  
 Start 4/9/2023 Finish 5/23/2023  
 Finish Well Construction 6/3/2023



Drilling Summary:  
 16" casing 0-266'  
 7 7/8" tri-cone 'pilot' hole 290-1820'  
 14 1/4" tri-cone rotary to 1824'  
 7" well casing 0-1824'  
 (perforated casing set 1300 to 1800')

Collar elev 4260'  
 (NAD 83) 448927 E  
 4183979 N  
 Vertical, 1824' total depth  
 Start 4/9/2023, Finish 5/23/2023  
 Finish Well Construction 6/3/2023



Drilling Summary:  
 16" casing 0-266'  
 7 7/8" tri-cone 'pilot' hole 290-1820'  
 14 3/4" tri-cone rotary to 1824'  
 7" well casing 0-1824'  
 (perforated casing set 1300 to 1800')

Collar elev. 4260'  
 (NAD 83) 448927 E  
 4183979 N  
 Vertical, 1824' total depth  
 Start 4/9/2023, Finish 5/23/2023  
 Finish Well Construction 6/3/2023

