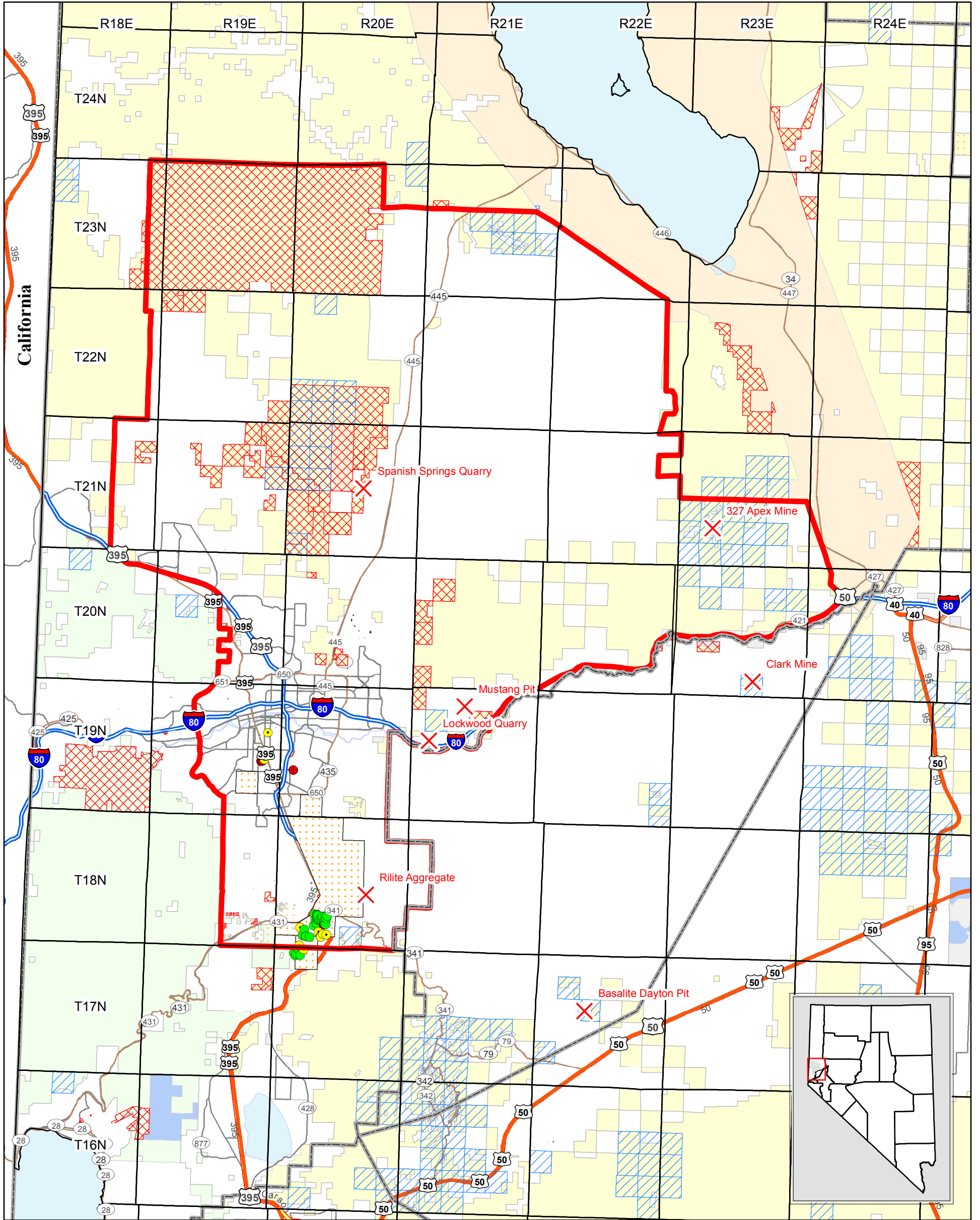


Washoe County Land Transfer

Map Compiled By: Lucia M. Patterson, Nevada Division of Minerals



Mineral and Geothermal Resources Impact Map:

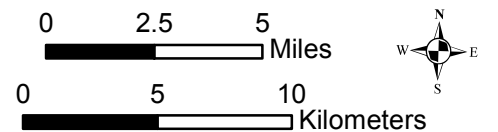
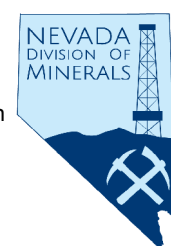
Land Status

- Bureau of Indian Affairs
- Bureau of Land Management
- Bureau of Reclamation
- US Forest Service
- Fish and Wildlife Service
- NV State Park
- Private
- Water

- X Active Mines
- Nevada County Boundaries
- Disposal Boundary
- Active Geothermal Fields/2016 Leases
- Sections With 2016 AY Mining Claims
- Washoe County Land Transfer

Geothermal Well Status

- In Use
- Idle
- Shut-In
- P&A



UTM NAD 1983 Zone 11
September 15, 2016

Total Proposed Withdrawal: 160,825 Acres
within which there are approximately 1,600
acres under geothermal leases and 501
mining claims.