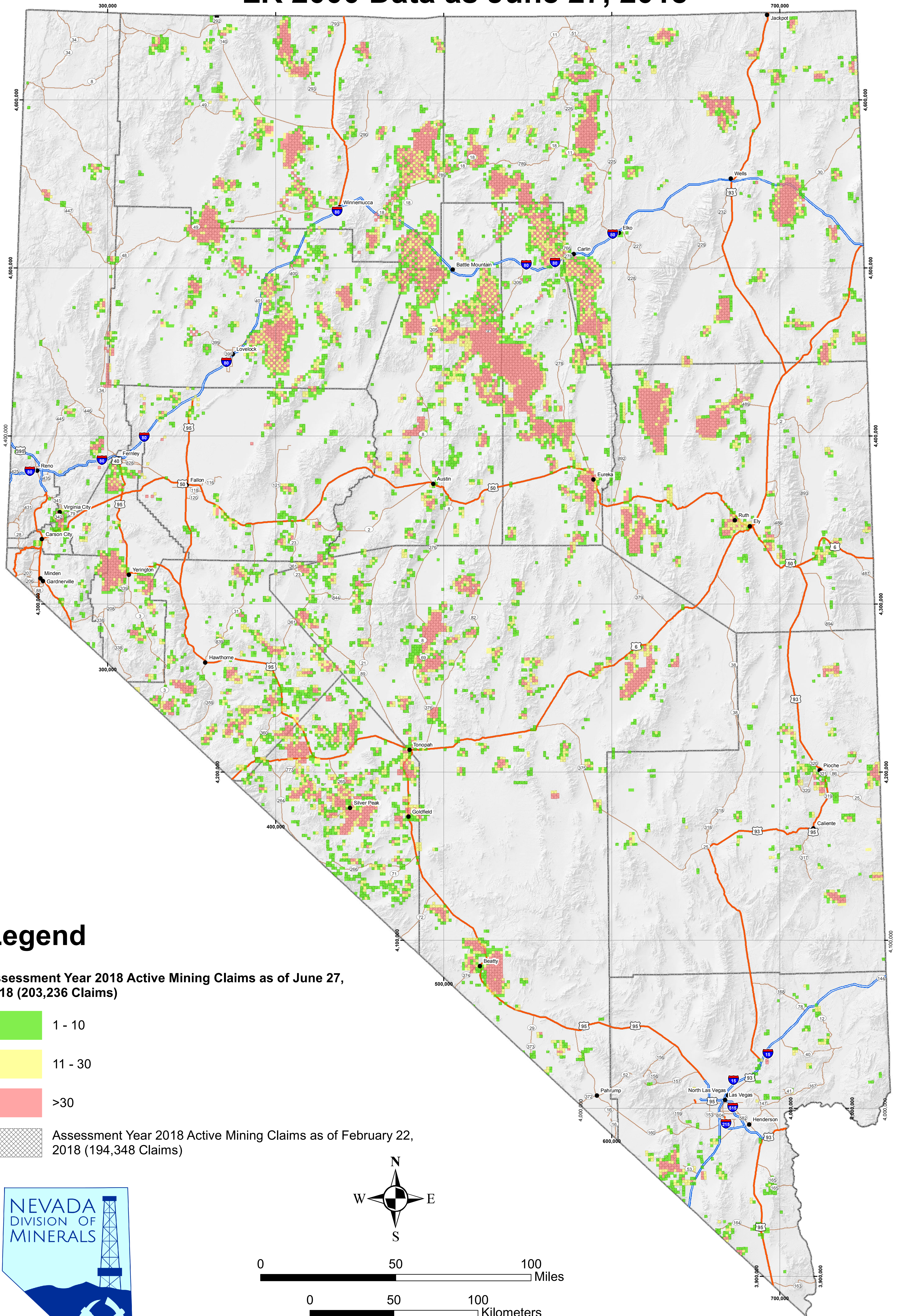


# Distribution of Mining Claims in Nevada

## LR 2000 Data as June 27, 2018

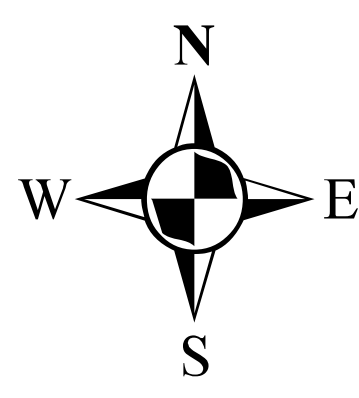
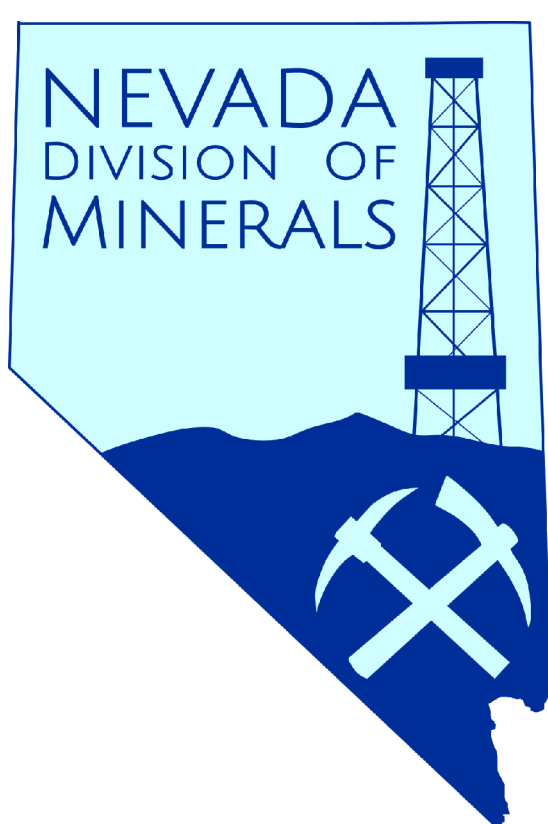


### Legend

Assessment Year 2018 Active Mining Claims as of June 27, 2018 (203,236 Claims)

- 1 - 10
- 11 - 30
- >30

Assessment Year 2018 Active Mining Claims as of February 22, 2018 (194,348 Claims)



0 50 100 Miles

0 50 100 Kilometers

Map Compiled By: Lucia M. Patterson, Nevada Division of Minerals  
 UTM NAD 1983 Zone 11  
 June 27, 2018