

Nevada Division of Minerals

2018 NEVADA MINERAL PRODUCTION, NEW OPERATIONS, CRITICAL MINERALS, AND A STUDY ON PRECIOUS METALS ORE TOLLING AND COPPER CONCENTRATE PROCESSING

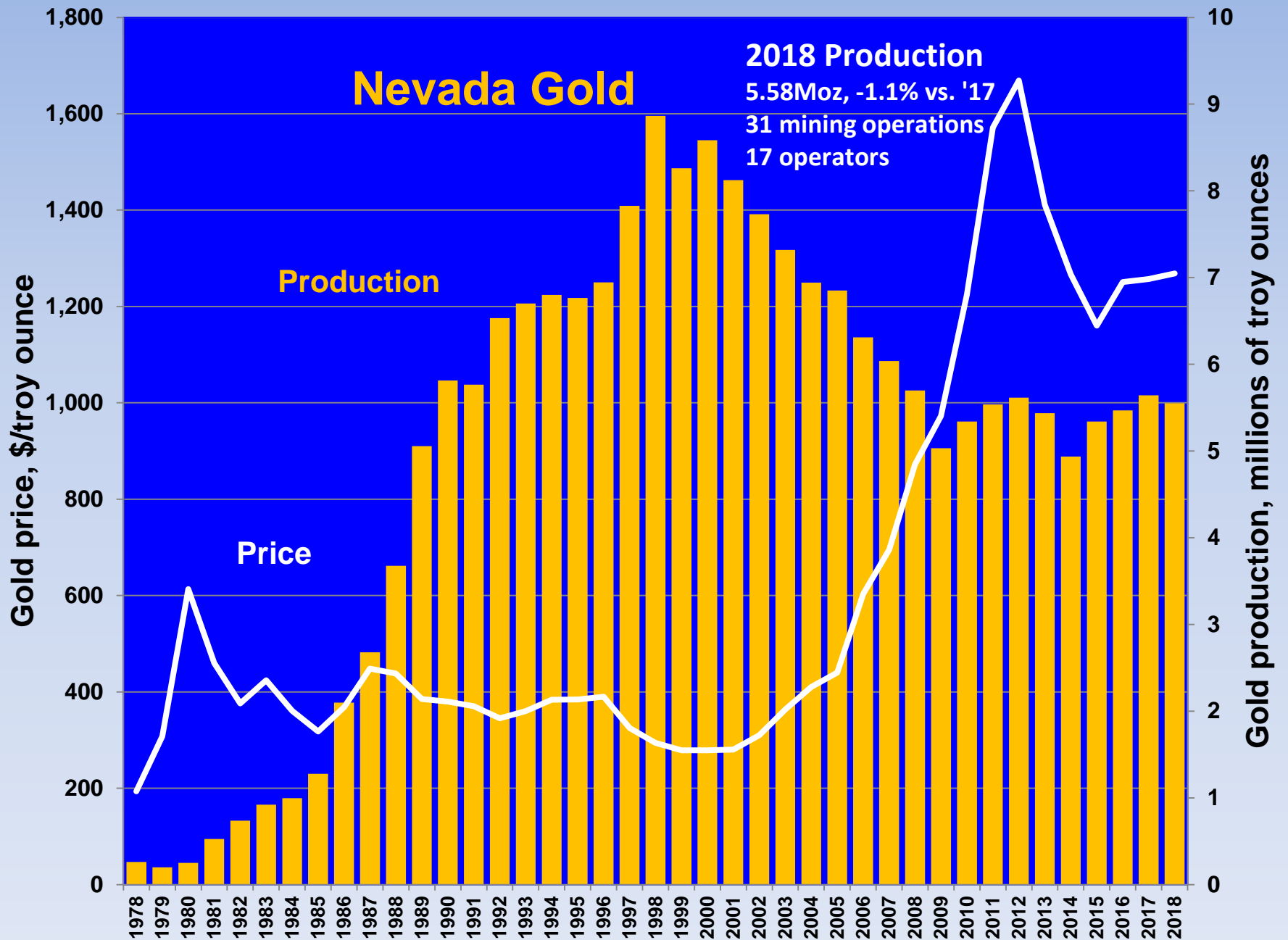
Mineral Processing Division of SME

Reno, NV

October 4, 2019

Richard Perry, Administrator

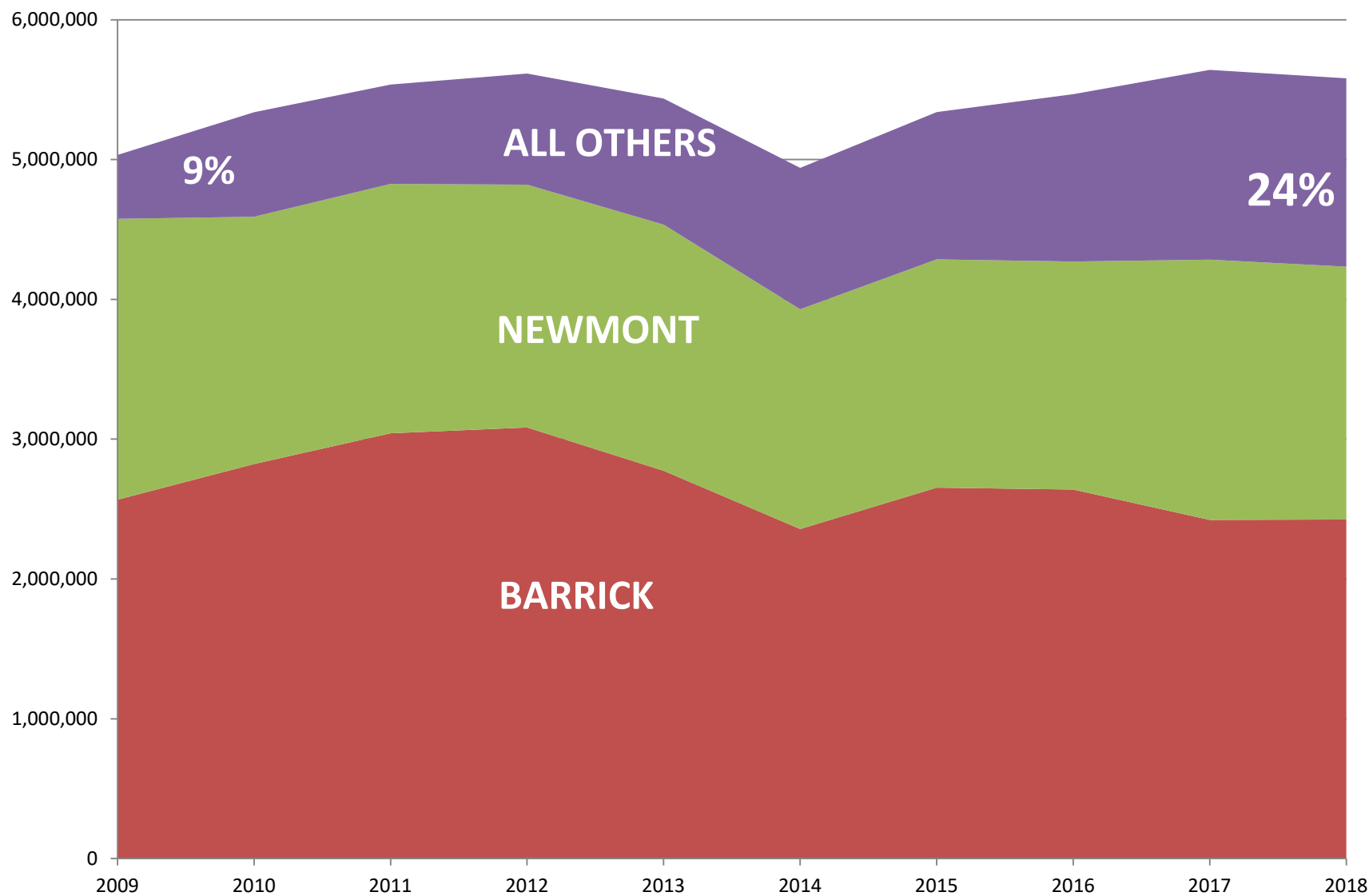




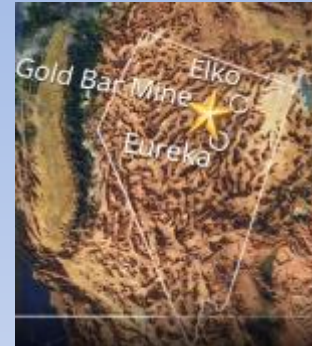
2018 NEVADA METAL PRODUCTION

2018 NEVADA METAL PRODUCTION, BY PRODUCER - Final				
Ranked by gold production				
Operator	Gold (ozs)	Silver (ozs)	Copper (lbs)	Moly (lbs)
Barrick	2,425,512	105,360		
Newmont	1,808,484	1,107,493	32,102,979	
Kinross	660,100	820,042		
SSR Mining	205,161	4,315		
Jerritt Canyon Gold	145,064	NR		
Hecla (Klondex)	109,614	516,312		
Coeur	54,668	5,037,983		
Florida Canyon Mining (Alio Gold)	46,878	31,775		
KGHM International	38,990	171,679	112,552,787	459,959
Fiore Gold	37,403	NR		
Premier Gold (40% of S. Arturo)	20,980	NR		
Rawhide Mining	15,444	208,875		
Mineral Ridge Gold	7,497	3,444		
Ruby Hill Mining	4,648	3,584		
Borealis Mining	420	394		
Sunrise Minerals	268	150		
Geo-Nevada	14	NR		
New Gold Nevada	14	2		
Totals	5,581,160	8,011,408	144,655,766	459,959

2009 - 2018 Annual Gold Production in Nevada



New Operation for 2019, #1: McEwen Mining – Gold Bar



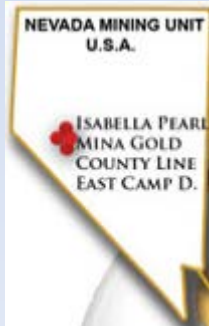
- Groundbreaking – November 2017
- First gold pour – February 2019
- Full Production achieved May, 2019
- Production target – 60,000 Au oz/yr
- Avg. Au grade - 1.0 g/t
- Current mine life – 7 years



New Operation for 2019, #2: Gold Resource Corp. – Isabella Pearl

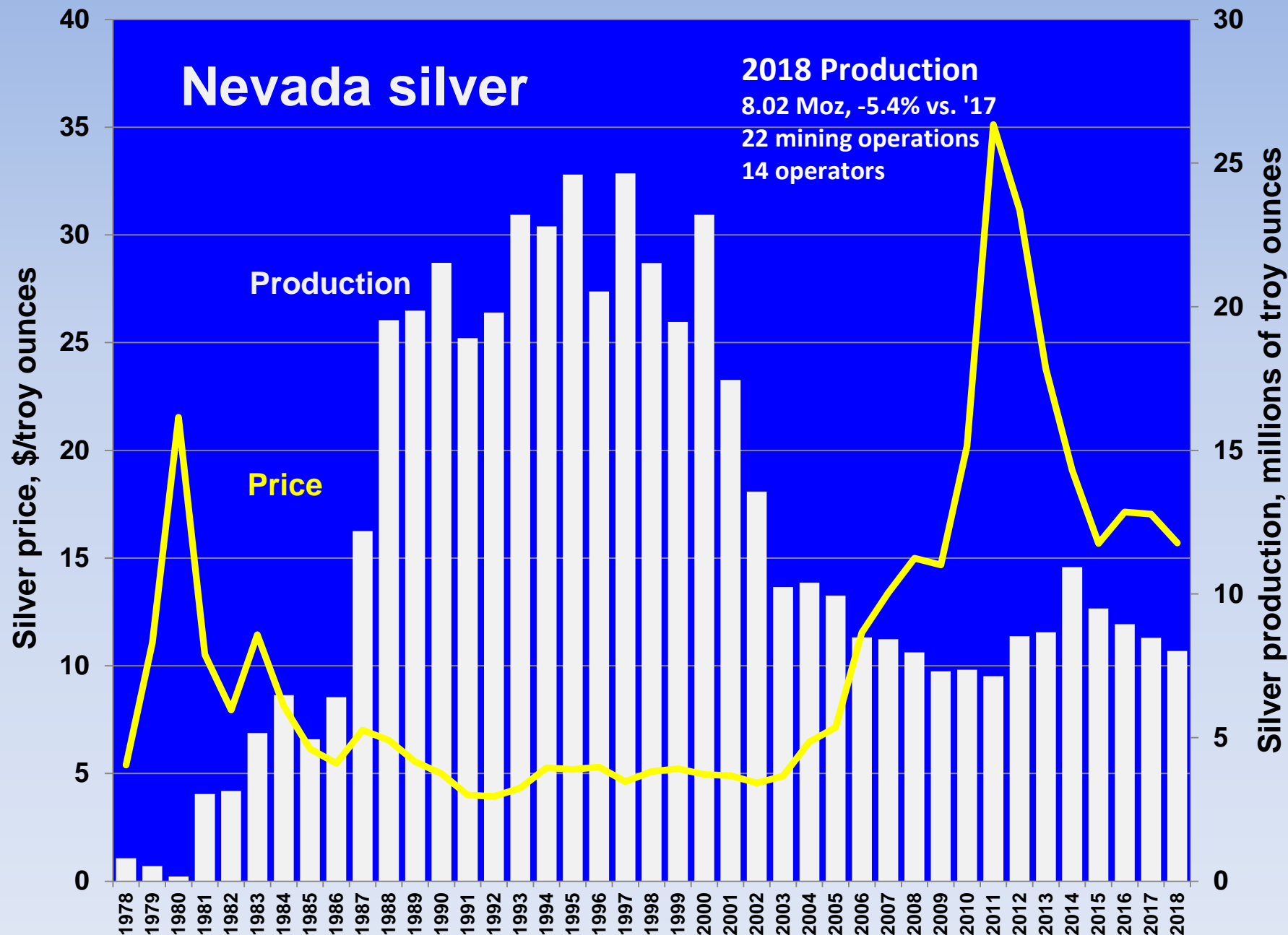


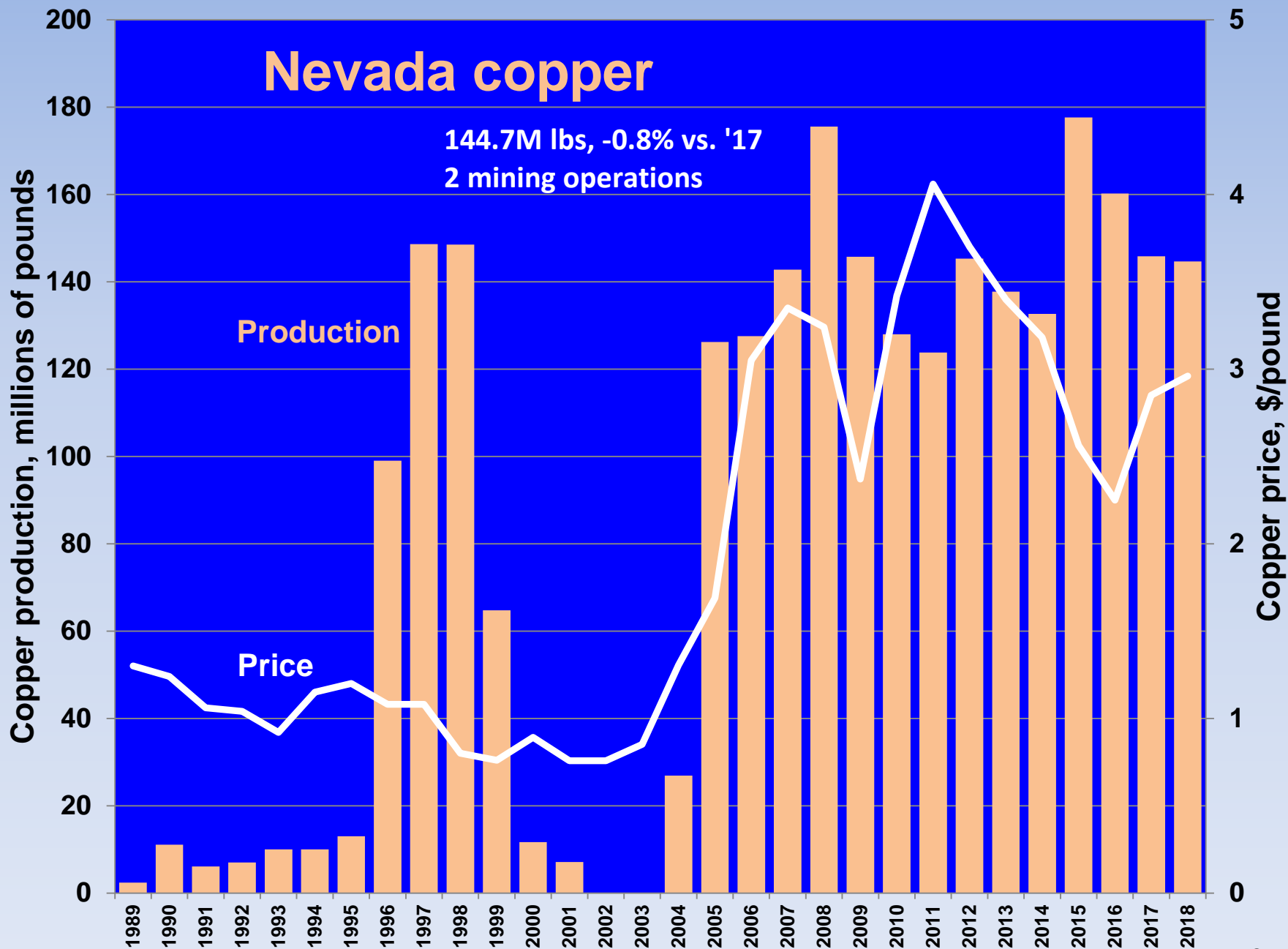
- Groundbreaking – June 2018
- First gold pour – April 2019
- Production target – 40,000 Au oz/yr
- Avg. Au grade - 3.7 g/t
- Current mine life – 5 years



Isabella Pearl Project: First gold dore bar







NEVADA COPPER – PUMPKIN HOLLOW MINE

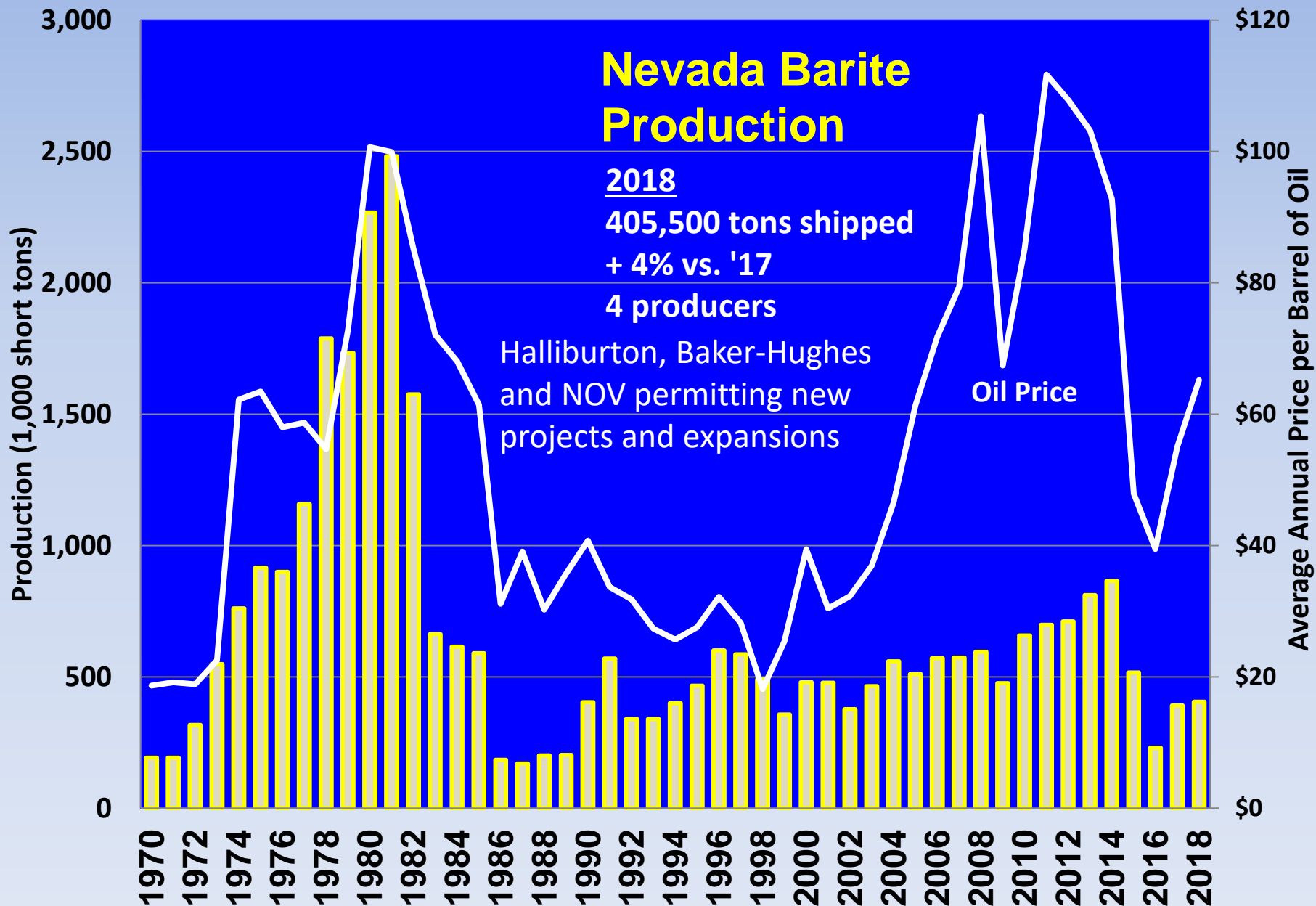
- 2 deposits with 5 billion contained pounds of Cu:
 - Higher grade eastern deposit; underground
 - Shallower western deposit; open-pit
- Currently developing a 5,000 tpd underground mine on the eastern deposit with a concentrator
- Main shaft being extended to 2,147 feet
- First copper production planned for @Q4 2019
- The mine should employ ~300 people
- Nevada's 3rd copper producer in past 20 years

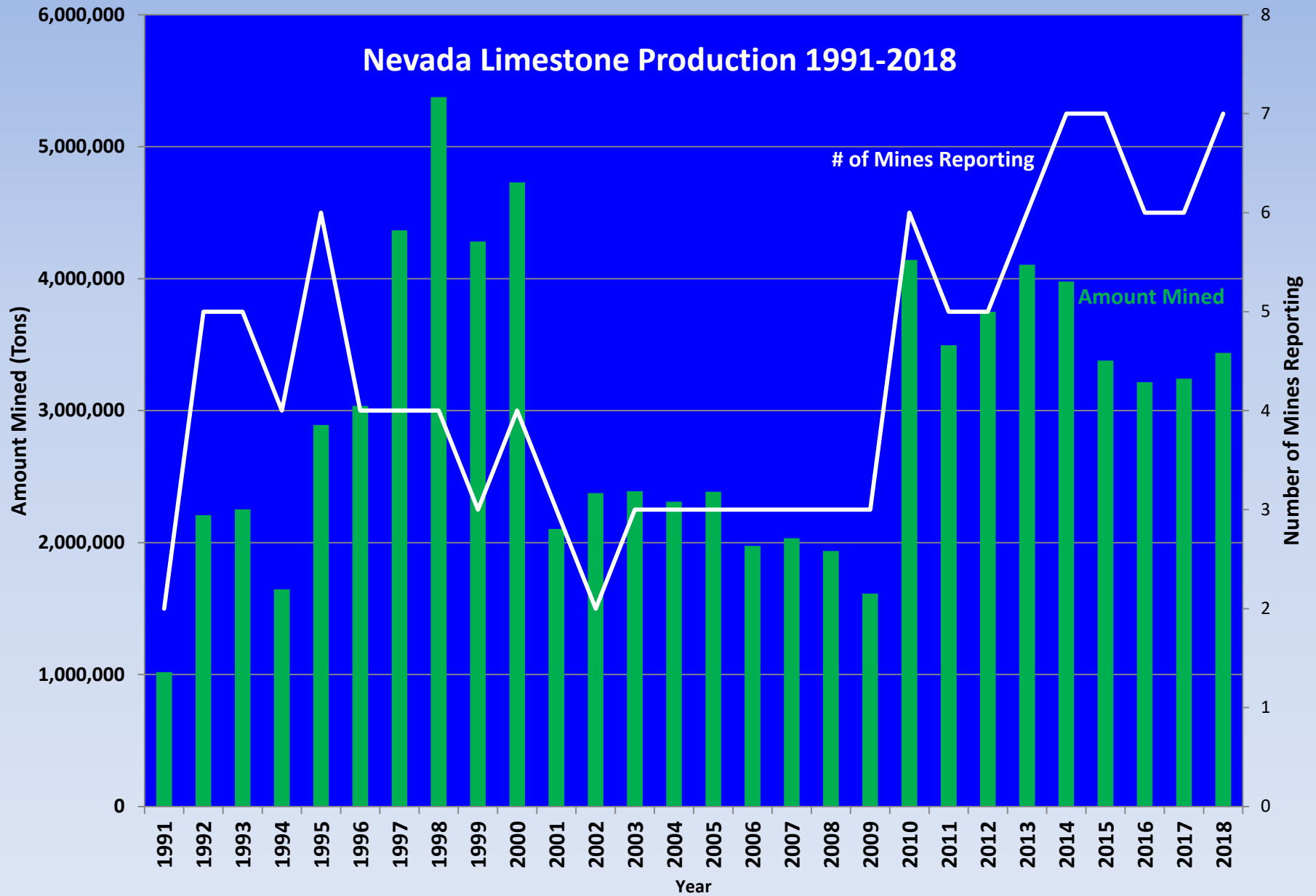


Headframe and stockpiles, July 2019

Concentrator under construction, July 2019







Nevada Diatomaceous Earth Production

Diatomite production (tons)

600,000

500,000

400,000

300,000

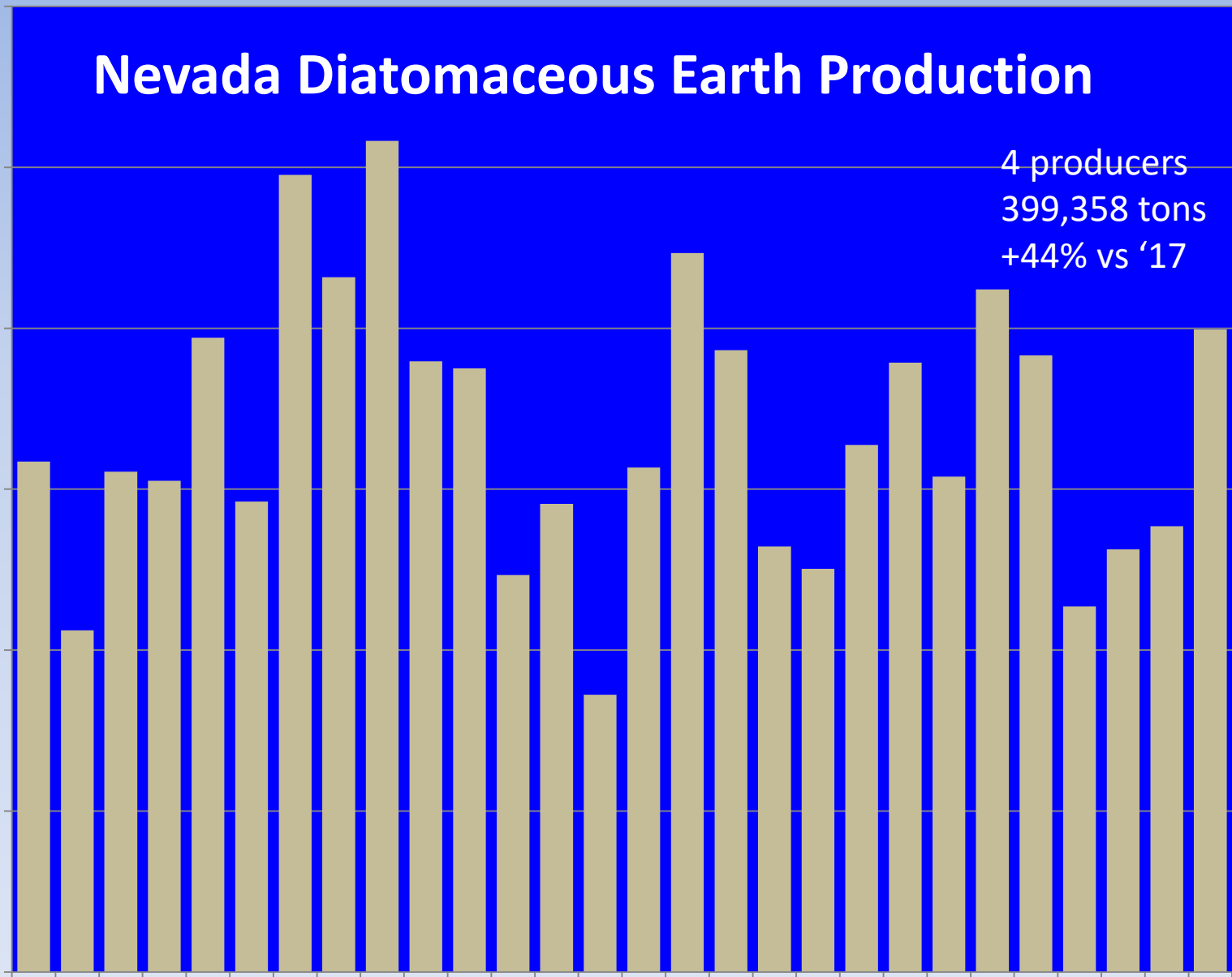
200,000

100,000

0

4 producers
399,358 tons
+44% vs '17

1991 1992 1993 1994 1995 1996 1997 1998 1999 2000 2001 2002 2003 2004 2005 2006 2007 2008 2009 2010 2011 2012 2013 2014 2015 2016 2017 2018



Other Industrial Minerals Produced in 2018

- 12,900,000 lbs of lithium carbonate
- 716,000 tons of silica sand
- 348,600 tons of magnesite
- 19,900 tons of salt
- 17,087 tons of perlite



Fluid Mineral Resources

- **Geothermal well permitting and compliance NRS 534A**
- **Oil and gas well permitting and compliance NRS 522**
- **Dissolved Mineral Resource Exploration well and borehole permitting NRS 534B**



Ormat Geodrill #1 at Tungsten Mtn, 2018

Geothermal Development 2017-2018



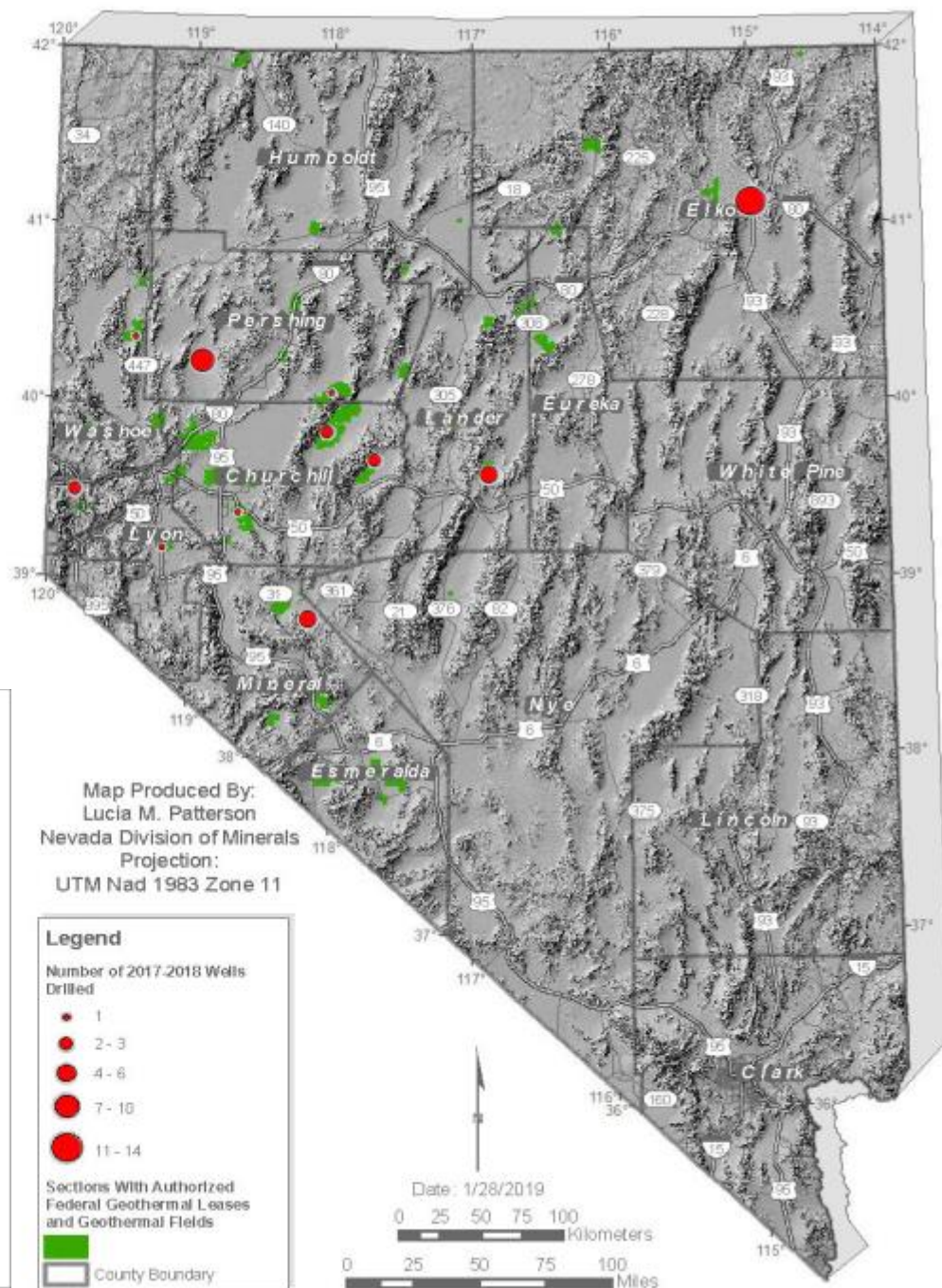
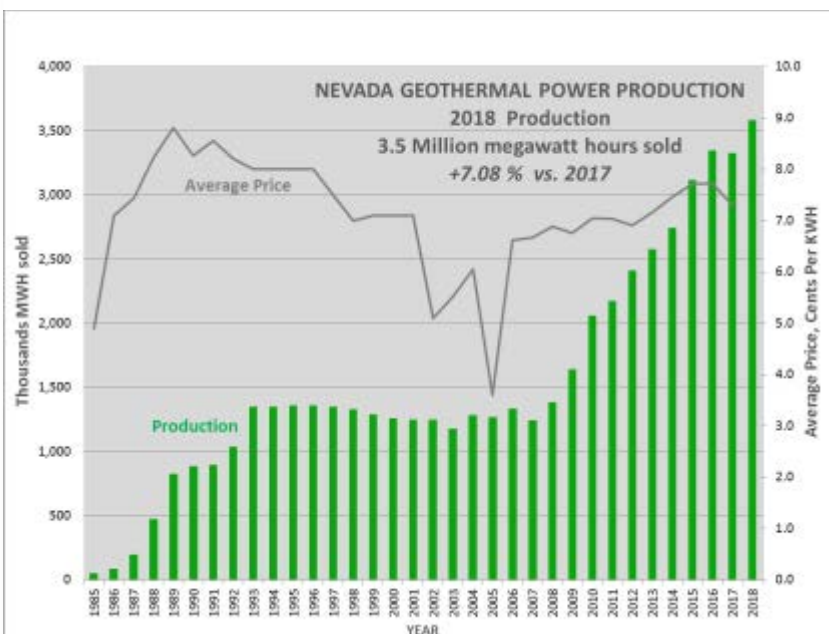
Wells Drilled 2017-2018

- 3** Domestic
- 4** Industrial Injection
- 8** Industrial Production
- 3** Observation
- 31** Temperature Gradient

As of 12/31/2018 there were 459 permitted commercial and industrial wells

There are 25 active geothermal plants in Nevada

There are 727 authorized geothermal leases as of 01/07/2019 which total 334,303 acres

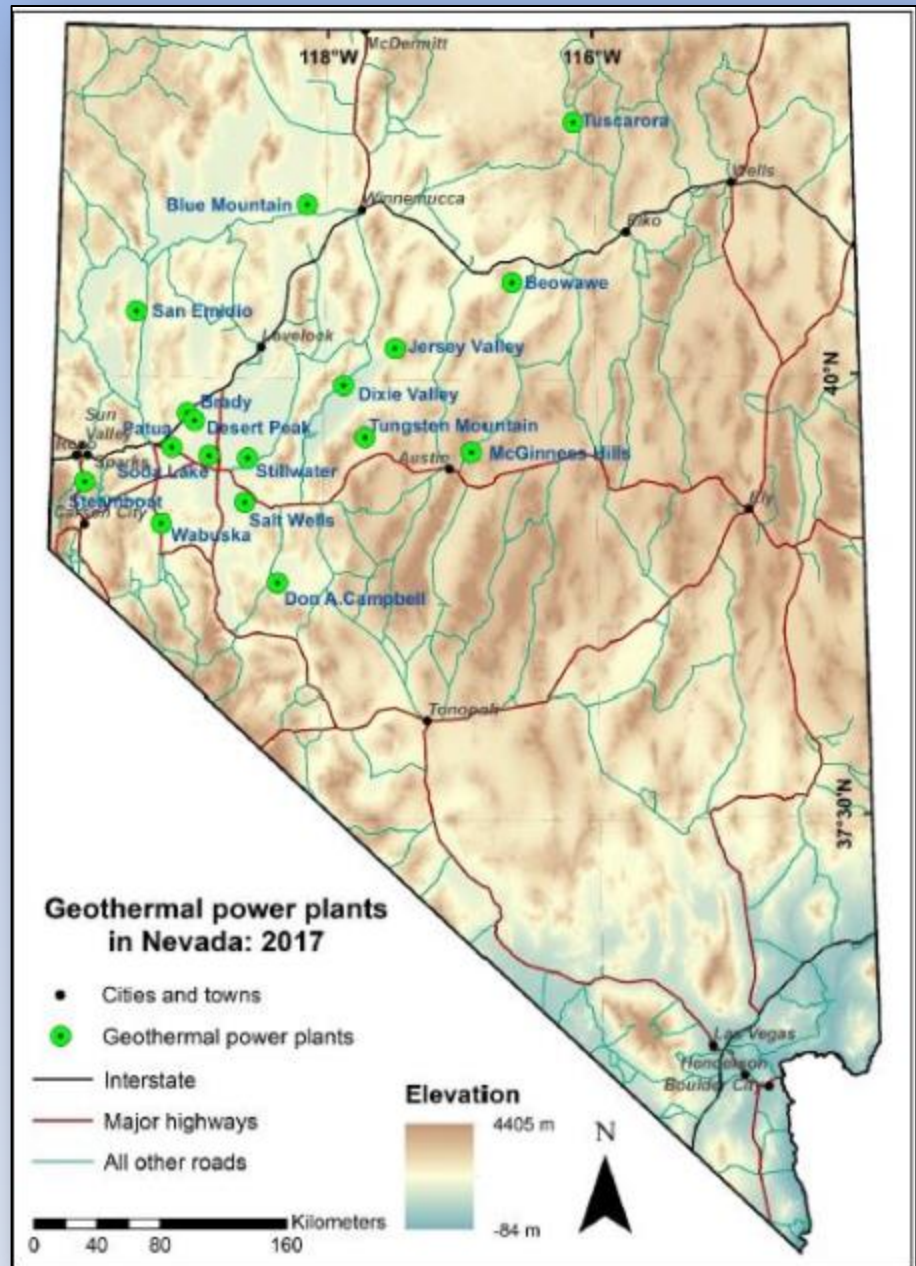


Geothermal Operators

➤ There are currently 17 geothermal fields in Nevada being operated by 5 operators:

- **Ormat Nevada**: Steamboat, McGinness Hills, Brady, Desert Peak, Wild Rose (Don Campbell), Jersey Valley, Tuscarora, and Tungsten Mountain, San Emidio
- **Terra-Gen**: Dixie Valley and Beowawe
- **Cyrq Energy**: Soda Lake, Patua, Blue Mtn
- **Enel North America**: Stillwater and Salt Wells
- **Star Peak Geothermal**: Wabuska

- 458 permitted wells
- 60% on private property
- >334,000 acres in authorized BLM leases



New Geothermal Plant in 2018: Ormat Technologies McGinness Hills Phase III

General

- Phase III plant went on-line in December, 2018
- 48 MW capacity
- 5 Production wells, 1 injection well drilled 2017-2018

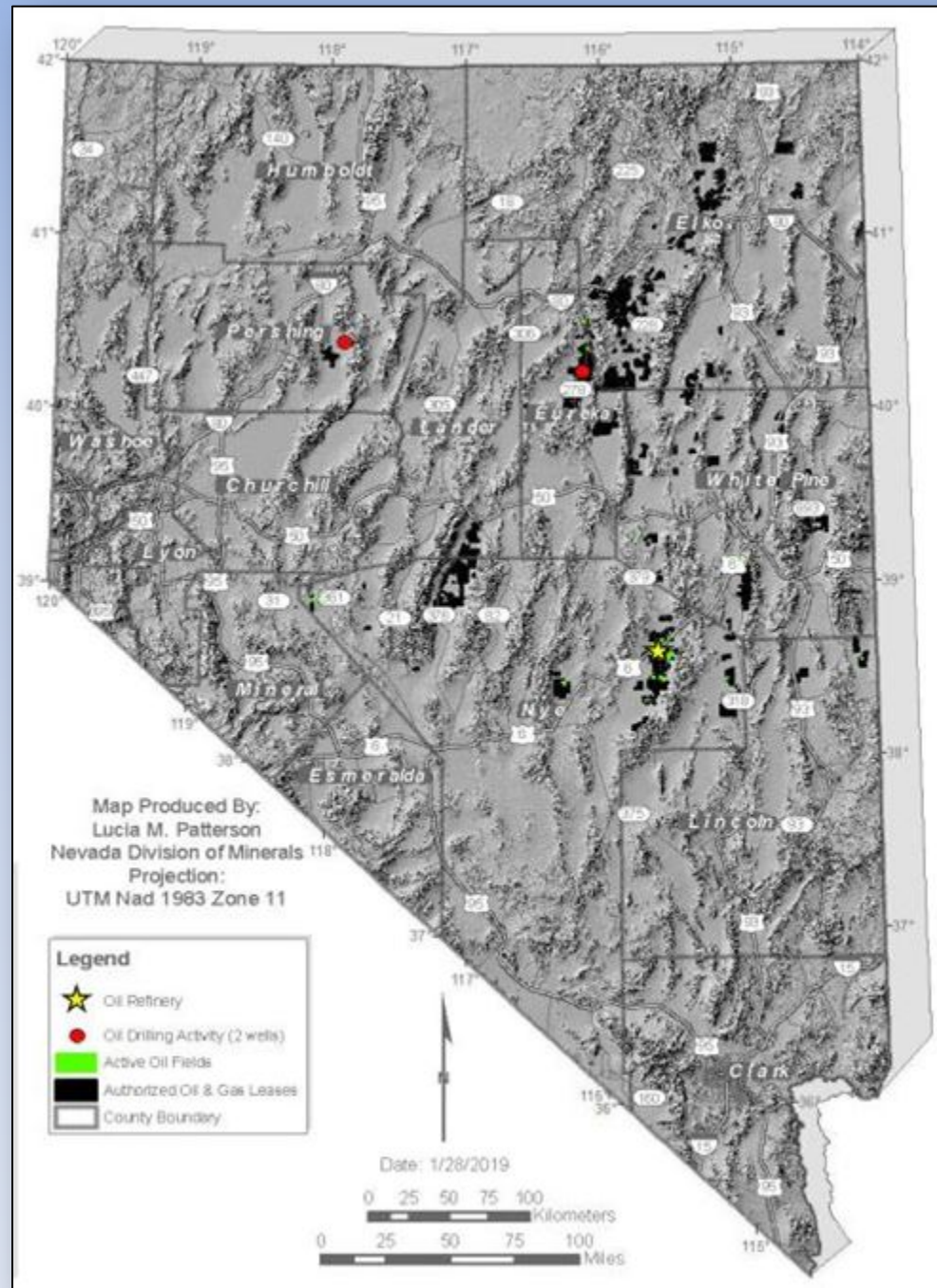


- Phase I at 30 MW (2012)
- Phase 2 increase to 72 MW (2015)
- Phase 3 increase to 138 MW (2018)



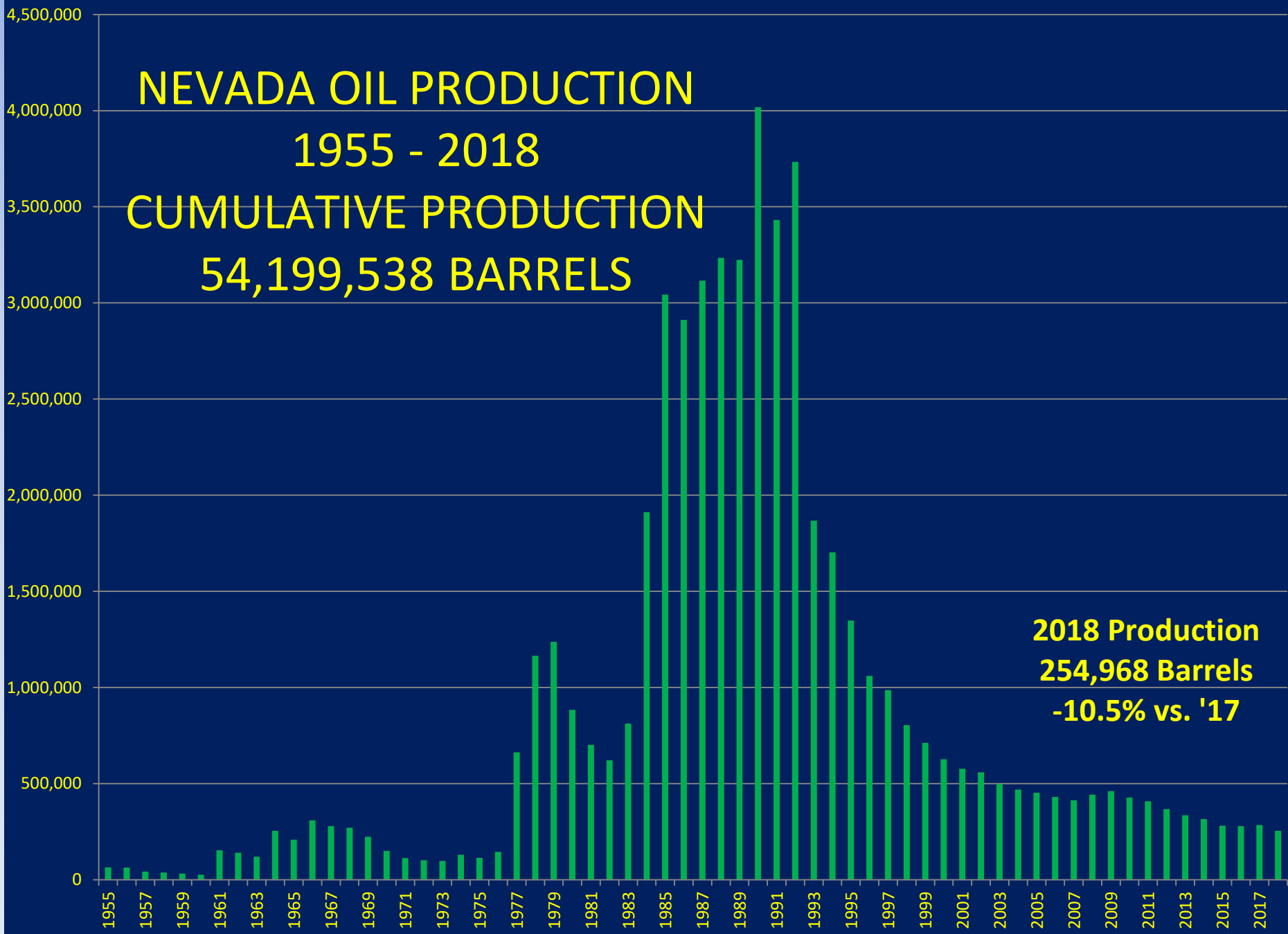
2018 Nevada Oil Activity

- 5 oil producers:
 - Makoil
 - Grant Canyon
 - Kirkwood
 - Western General
 - Tomera Ranch
- 60 producing wells in 10 fields
- 119 permitted oil wells
- 99% on Federal land
- 194 authorized oil leases totaling 337,000 acres
- 3 new drilling permits issued in 2018



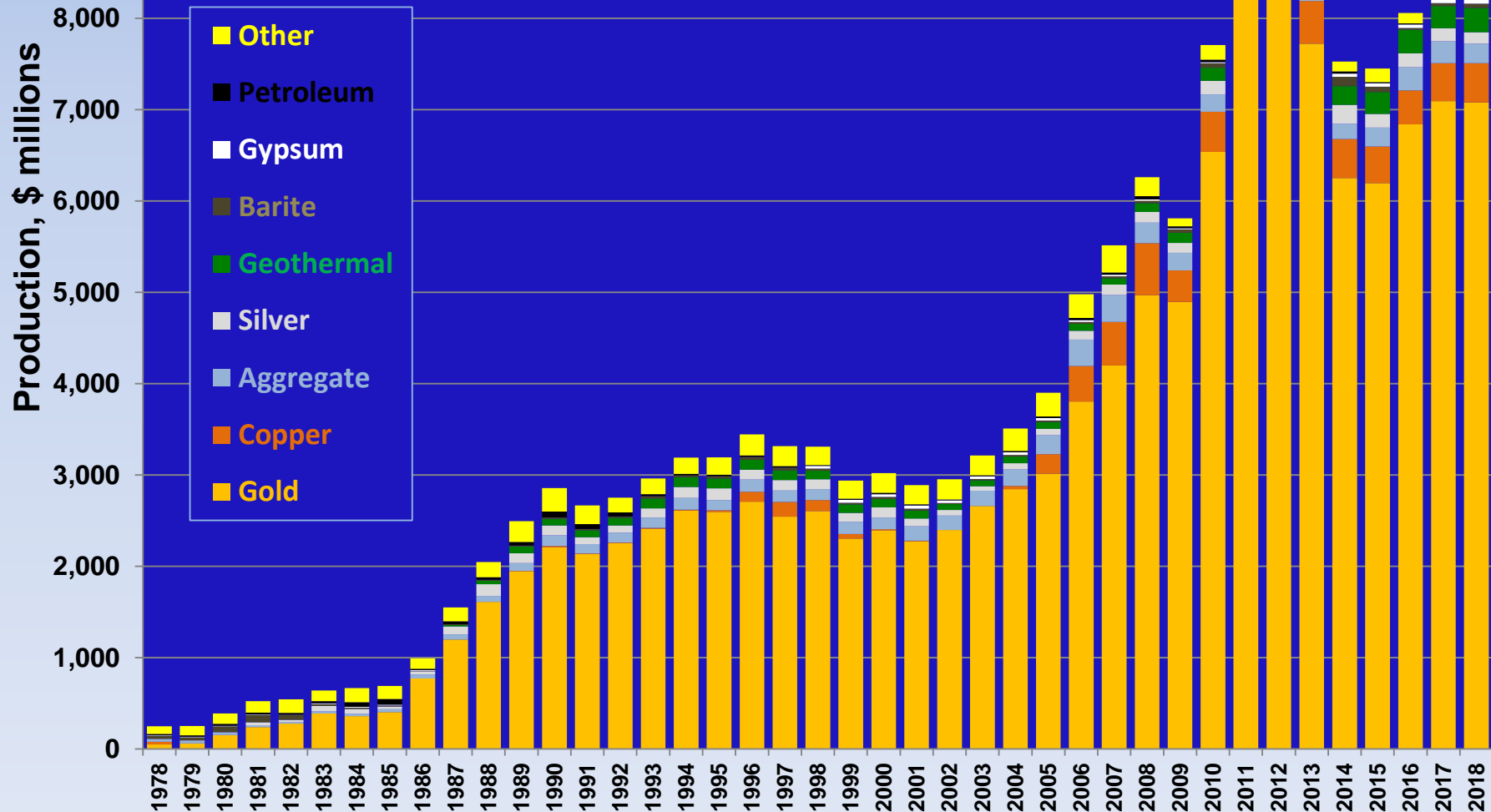
NEVADA OIL PRODUCTION
1955 - 2018
CUMULATIVE PRODUCTION
54,199,538 BARRELS

2018 Production
254,968 Barrels
-10.5% vs. '17

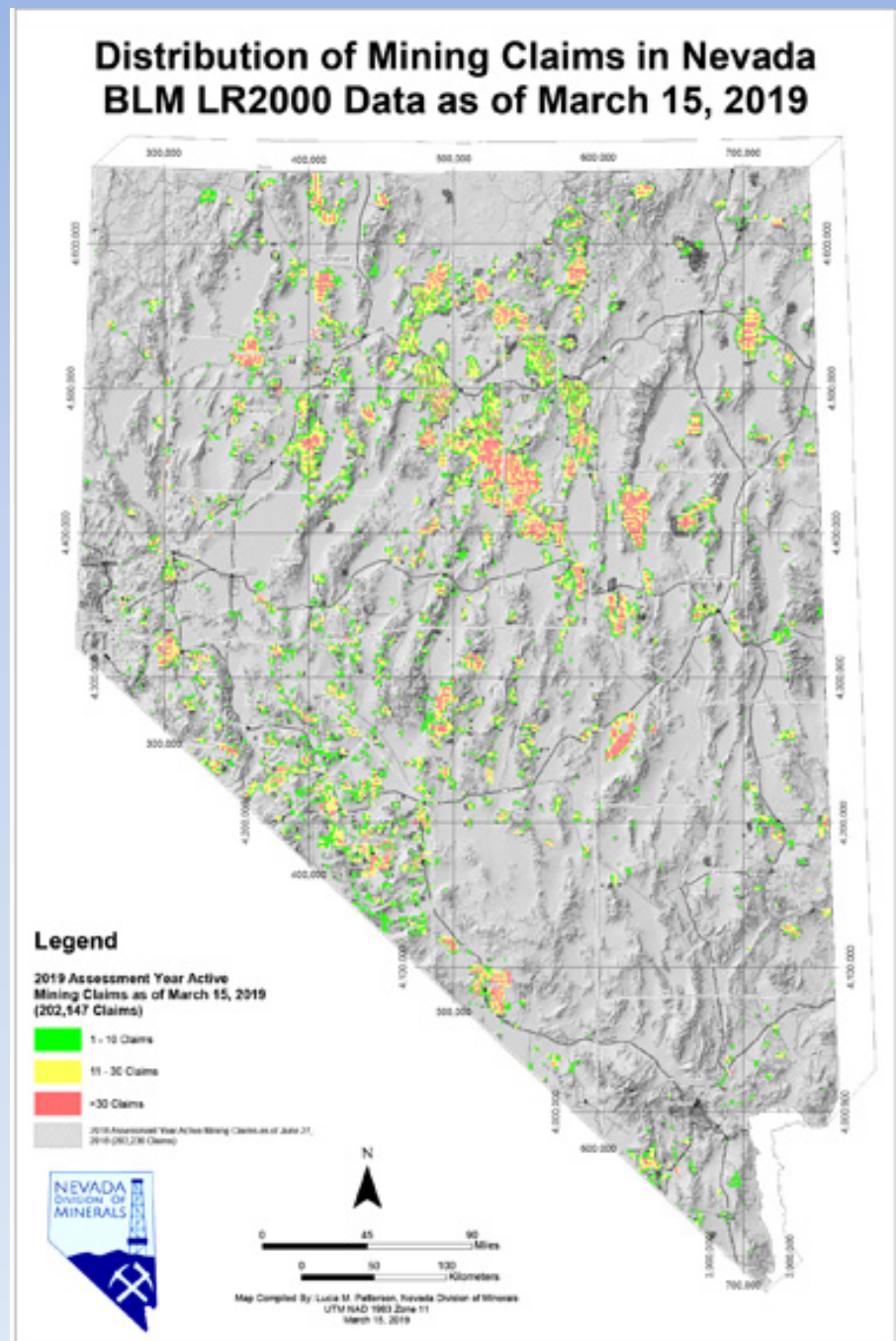


Nevada Mineral and Energy Production Values 1978 - 2018

\$8.4 Billion in 2018, same as 2017



202,147 Active
Mining Claims in
Nevada as of
3/15/2019,
an increase of
0.4% from
2/22/2018



Dissolved Minerals Development 2017-2018

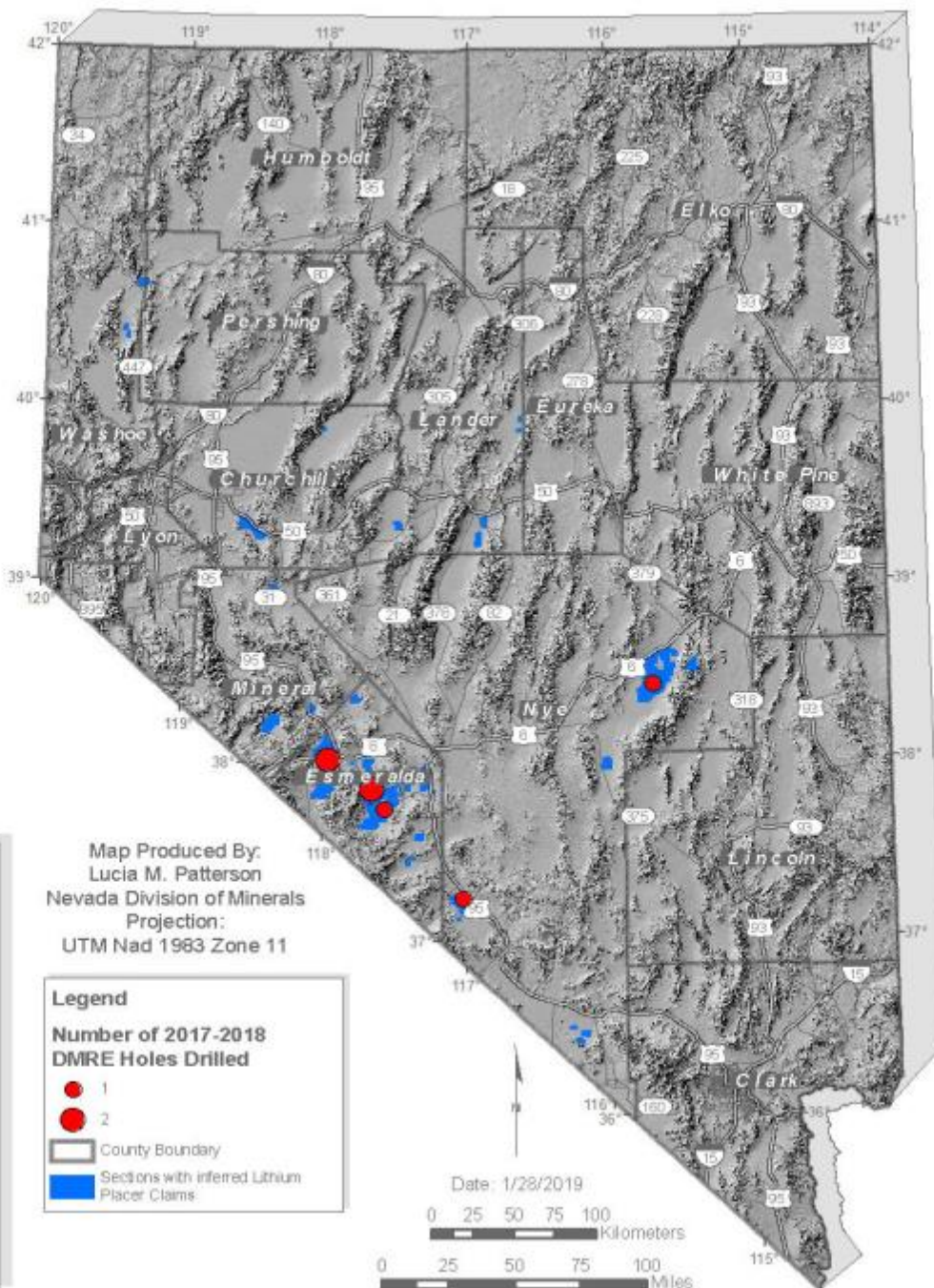
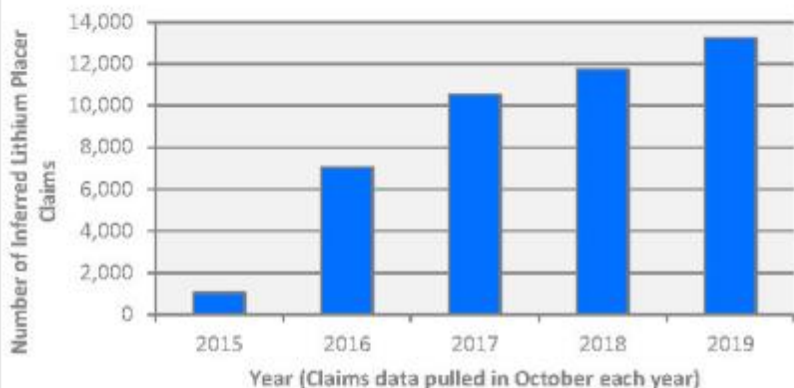


As of 01/22/2019 there were 7 DMRE holes drilled

- 5 Wells
- 2 Boreholes

As of 01/04/2019 there were 11,772 inferred lithium placer claims

Lithium Claims Vs. Time



DMRE WELL DRILLED UNDER NEW REGULATIONS IN RAILROAD VALLEY, NYE COUNTY. 3PL Operating, David Gibson Drilling



Photo taken May 13, 2018

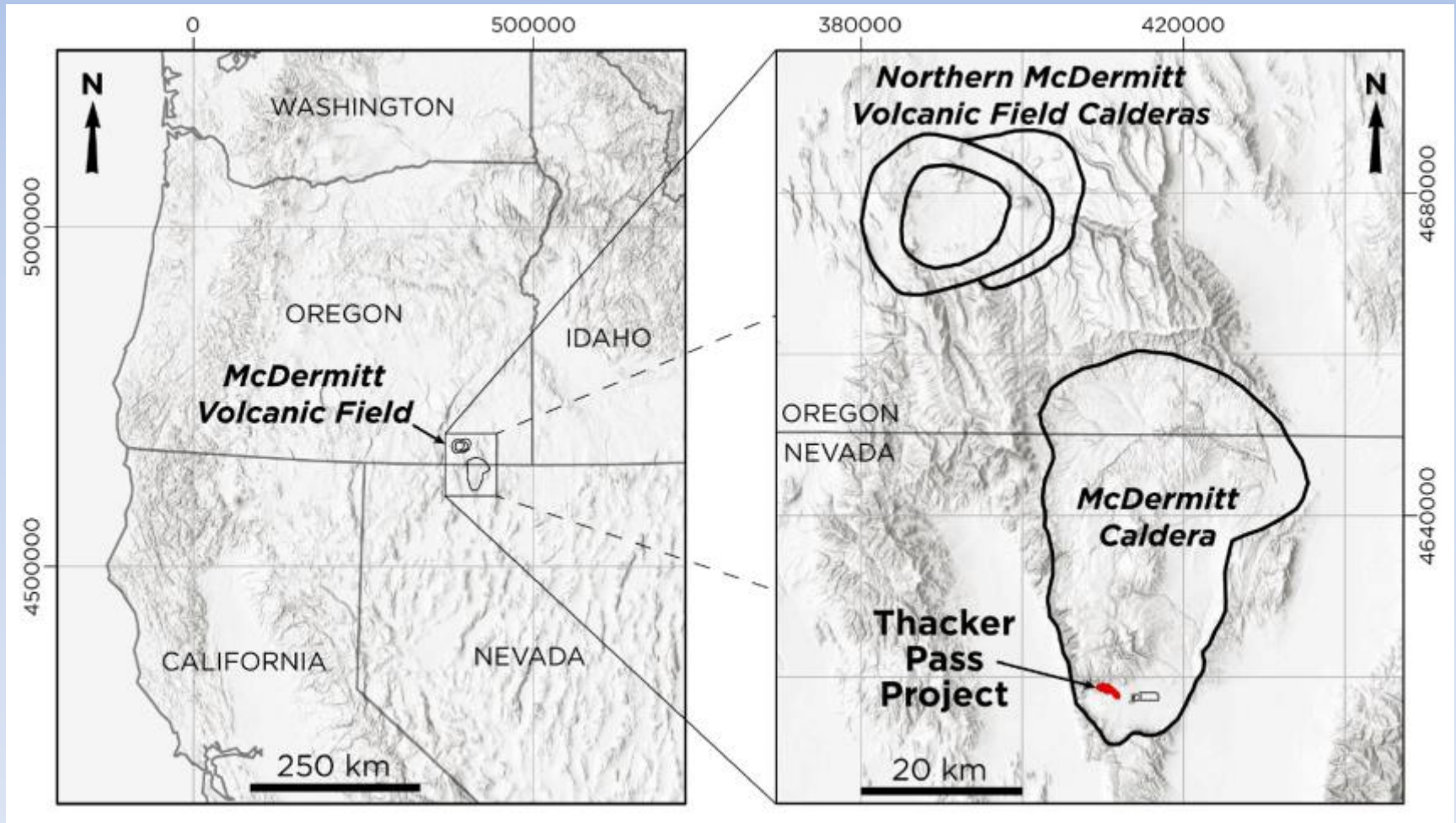
Lithium Clay Projects

- Exploration regulations same as hard rock
 - Notice of plan-level under BLM
 - No permitting of boreholes needed as no water pumped

- Mine permitting same as any mining project
 - On Federal lands, BLM or USFS lead agency
 - On Private lands, NDEP-BMRR is lead agency

- Two projects which have done PFS reports, metallurgical studies, and proposed flowsheets:
 - Lithium Americas - Thacker Pass Project in Humboldt County
 - Ioneer Ltd. - Rhyolite Ridge Project in Esmeralda County

Lithium Americas – Thacker Pass Project

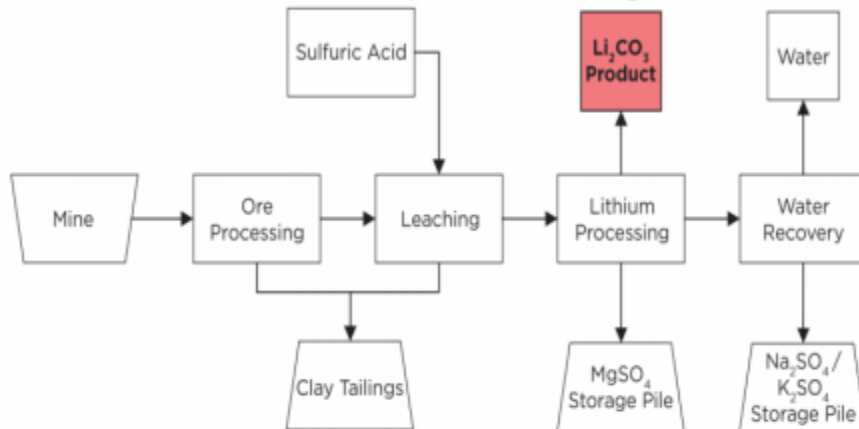


Lithium Americas – Thacker Pass Project

PLANT

- Process is comprised of 3 functional areas: Ore Preparation & Leaching, Sulfuric Acid Plant, & Lithium Processing Plant
- No new process technology, only traditional chemical processing equipment used in unique ways, specific to the LNC extraction process:

- Tanks (stirred reactors)
- Vacuum Belt Filters
- Single and Double-Effect Crystallizers
- Double Contact / Double Absorption Sulfur-Burning Acid Plant



- Reserves – 3.1M tonnes LCE at 2,358 ppm Li
- Strip ratio – 1.6:1
- Mine life – 46 years
- Processing time - <24 hours
- Lithium recovery – 83%
- Pilot plant operational in Reno
- Final Mine PoO to be submitted to BLM later this year

Ioneer's Rhyolite Ridge Project



Project overview



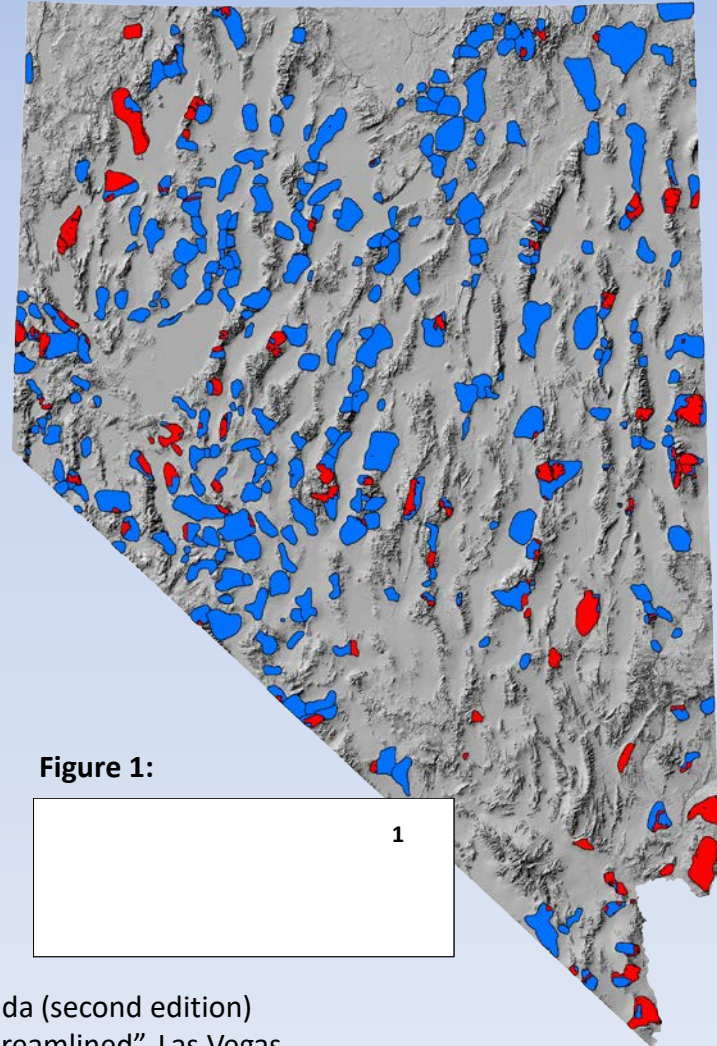
A searlesite resource that is different to other sedimentary lithium deposits - it is suitable for a simple acid leach process



- Total Resource¹ of 4.1 million tonnes lithium carbonate & 10.9 million tonnes boric acid
- Including 121 million tonnes of lithium-boron ore containing:
 - 1.1 million tonnes lithium carbonate
 - 8.6 million tonnes boric acid
- Lithium only clay mineralisation to be stockpiled

Critical Minerals Affected by Mineral Entry Withdrawals

- 35 minerals identified as “Critical Minerals” by the U.S. Department of the Interior in May, 2018.
- Minerals selected are deemed “vital to the Nation's security and economic prosperity.”
- Nevada contains known occurrences or deposits of **20 of the 35** critical minerals²
- More than 330 historic mining districts contain occurrences of one or more critical minerals¹



¹Tingley, Joseph V. (1998). NBMG Report 47, Mining districts of Nevada (second edition)

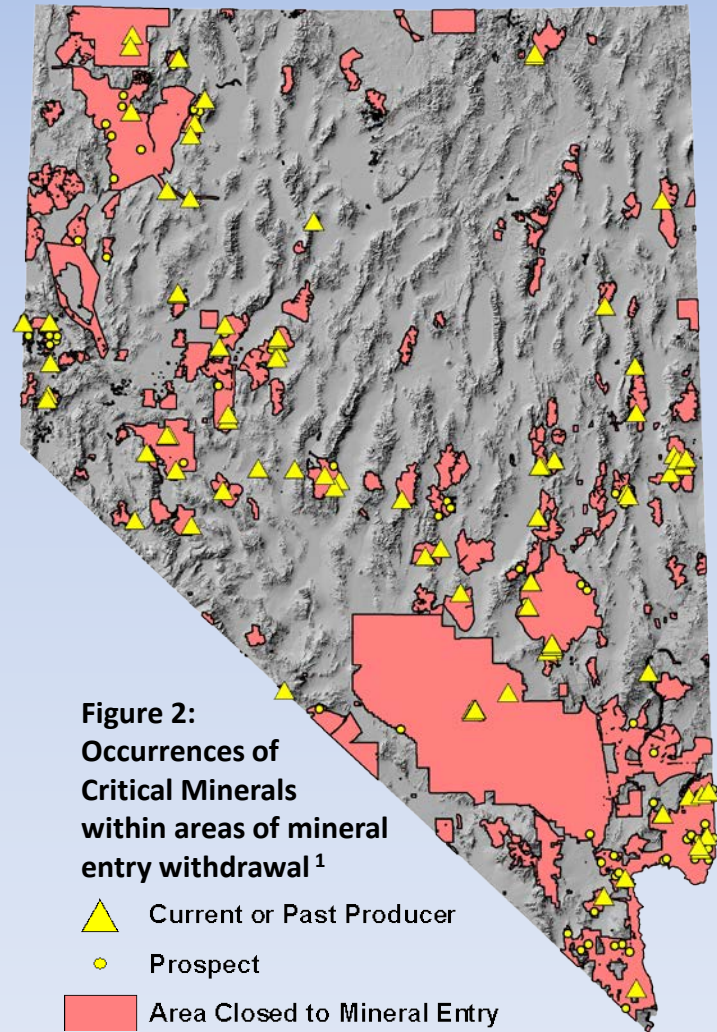
² Martin, Gary. “Mining of 20 ‘critical’ minerals in Nevada could be streamlined”, Las Vegas Review-Journal, 21 May, 2018. Accessed 9 August, 2019.

Critical Minerals Affected by Mineral Entry Withdrawals

➤ Aluminum	➤ Manganese*
➤ Antimony*	➤ Niobium
➤ Arsenic*	➤ PGM
➤ Barite*	➤ Potash
➤ Beryllium*	➤ REE
➤ Bismuth	➤ Rhenium
➤ Cesium & Rubidium	➤ Scandium
➤ Chromium	➤ Strontium
➤ Cobalt	➤ Tantalum
➤ Fluorspar*	➤ Tellurium
➤ Gallium	➤ Tin
➤ Germanium	➤ Titanium
➤ Graphite	➤ Tungsten*
➤ Helium	➤ Uranium*
➤ Indium	➤ Vanadium
➤ Lithium*	➤ Zirconium & Hafnium
➤ Magnesium*	

Bold indicates known occurrences

***** indicates past or present production



¹ USGS Mineral Resources Data System, (2016). <https://mrdata.usgs.gov/mrds/>

The Study

Opportunities for Precious Metals Toll Milling and Copper Concentrate Processing in Nevada

Nevada Bureau of Mines and Geology - Report 57

Funded by The Nevada Commission on Mineral
Resources

Authored by

Thomas J. DeMull

David A. Davis

Lucia M. Patterson

Joel C. Lenz

Nevada Governor's Office of

ECONOMIC DEVELOPMENT

Ore Tolling Study Questions

- **Is there a need for a custom milling facility in Nevada for the processing of precious metals ores, or are there existing facilities that have the capacity to process toll ores?**
- **Would it be beneficial to construct a facility for processing copper concentrates in Nevada?**

Methodology

- **Inventory of Processing Facilities**
- **Types of Ore Eligible for Toll Milling**
- **Availability of Ore Resources**
- **Inventory of Custom Processing Facilities in Nevada**
- **Reviewed the Commercial Copper Concentrate Processes**
- **Smelter/Concentrate Leach Fatal Flaw Analysis**

Dump Leach



Coeur Rochester

Heap and Dump Leaches in Nevada

Facility Name	Owner/Operator	Mine	Capacity, tpd	Operating	County
Bald Mtn. No. Mooney	KG Mining, Inc.	Bald Mtn.	Combined	Yes	White Pine
Bald Mtn. So. Mooney	KG Mining, Inc..	Bald Mtn.	55,000 to 60,000	Yes	White Pine
Bald Mtn. Plant No. 2	KG Mining, Inc.	Bald Mtn.	N/A	Partial – Residual Leach	White Pine
Borealis	Borealis Mining Co. LLC	Borealis	N/A	Partial – Residual Leach	Mineral
Carlin Heap Leach	Newmont Mining Corp.	Carlin	Varies	Yes	Eureka
Coeur Rochester	Coeur Rochester, Inc.	Rochester	53,600	Yes	Pershing
Comstock	Comstock Mining, Inc.	Lucerne Pit	1,780	No	Storey
Cortez Area 28, 30, 34	Barrick Cortez, Inc.	Cortez, Pipeline	46,000 to 64,000	Yes	Lander
Denton-Rawhide	Rawhide Mining, LLC	Denton-Rawhide	14,000	Partial – Residual Leach	Mineral
Emigrant	Newmont Mining Corp.	Emigrant	Varies	Yes	Eureka
Florida Canyon	Alio Gold	Florida Canyon	24,000	Yes	Pershing
Gold Bar	McEwen Mining Inc.	Gold Bar	8,050	No – In Construction	Eureka
Hycroft	Hycroft Mining Corp.	Hycroft Mine	N/A	Partial – Residual Leach	Humboldt
Lone Tree	Newmont Mining Corp.	Lone Tree	Varies	Yes	Humboldt
Long Canyon	Newmont Mining Corp.	Long Canyon	Varies	Yes	Elko
Marigold	Silver Standard Res. Inc.	Marigold	64,700	Yes	Humboldt
Mineral Ridge	Mineral Ridge Gold LLC	Mineral Ridge	4,000	Partial – Residual Leach	Esmeralda
Pan	GRP Pan, LLC	Pan	13,000 to 14,400	Yes	White Pine
Phoenix	Newmont Mining Corp.	Phoenix	N/A	No	Lander
Relief Canyon	Pershing Gold Corp.	Relief Canyon	16,700	No - Proposed	Pershing
Round Mountain	Round Mtn. Gold Corp.	Round Mountain	55,000	Yes	Nye
Ruby Hill	Ruby Hill Mining Corp	Ruby Hill	7,000	Partial – Residual Leach	Eureka
Twin Creeks	Newmont Mining Corp.	Twin Creeks	5,500	Yes	Humboldt
Vantage	KG Mining, Inc.	Vantage Basin	N/A	No – In Construction	White Pine

- Oxide Mill



Hecla Midas Mill

Oxide Mills

Facility Name	Owner/Operator	Mine	Capacity, tpd	Operating	County
Aurora Mill	Klondex Mines, Ltd.	Aurora	350	Yes - Partial	Mineral
Carlin Mill 5	Newmont Mining Corp.	Carlin	13,000 – 17,000	Yes	Eureka
Cortez Pipeline Mill	Barrick Cortez, Inc.	Cortez Hills, Pipeline	14,000	Yes	Lander
Crown Point Mill	Crown Point Holdings	None	125	No	Storey
Gold Bar Mill	Fremont Gold Ltd	Gold Bar	3,500	No	Eureka
Goldwedge Mill	Mineral Ridge, LLC	Goldwedge	450	No	Nye
Midas Mill	Klondex Mines, Ltd.	Midas; Fire Creek; Hollister	1,200	Yes	Elko
Mineral Ridge Mill	Mineral Ridge, LLC	Mineral Ridge	4,000	No - Proposed	Esmeralda
Phoenix Mill	Newmont Mining Corp.	Phoenix			
Round Mountain Mill	Round Mtn. Gold Corp.	Round Mountain	10,000	Yes	Nye
Ruby Hill Mill	Ruby Hill Mining Co. LLC	Ruby Hill	3,500	No	Eureka
Taylor Mill	Silver Predator Corp.	Taylor	1,320	No	White Pine
Twin Creeks Juniper	Newmont Mining Corp.	Twin Creeks	3,000	Yes	Humboldt
Twin Creeks Pinion	Newmont Mining Corp.	Twin Creeks	N/A	No	Humboldt

Refractory Mill



Newmont Mill 6

Refractory Mills

Facility Name	Owner/Operator	Mine	Capacity, tpd	Operating	County
Carlin Mill 6 Roaster	Newmont Mining Corp.	Carlin	9,000 – 10,500	Yes	Eureka
Goldstrike Autoclave	Barrick Goldstrike Mines, Inc.	Barrick Goldstrike	17,000	Yes	Eureka
Goldstrike Roaster	Barrick Goldstrike Mines, Inc.	Barrick Goldstrike	17,500	Yes	Eureka
Jerritt Canyon Roaster	Jerritt Canyon Gold, LLC	Jerritt Canyon	4,000 – 4,500	Yes	Elko
Lone Tree Autoclave	Newmont Mining Corp..	Lone Tree	2,500	No	Humboldt
Twin Creeks Sage	Newmont Mining Corp.	Twin Creeks	10,700	Yes	Humboldt

Flotation Concentrator



KGHM Robinson

Flotation Concentrators

Facility Name	Owner/Operator	Mine	Capacity, tpd	Operating	County
Carlin Mill 5	Newmont Mining Corp.	Carlin	13,000 – 17,000	Yes	Eureka
Lone Tree	Newmont Mining Corp.	Lone Tree	6,000	No	Humboldt
Phoenix Copper Leach	Newmont Mining Corp.	Phoenix	Varies	Yes	Lander
Phoenix Concentrator	Newmont Mining Corp.	Phoenix	33,000 – 38,000	Yes	Lander
Robinson Concentrator	KGHM International, Ltd.	Robinson – Ruth Pit	46,000	Yes	White Pine
Taylor Mill	Silver Predator Corp.	Ward	1,320	No	White Pine

What is Toll Milling and Why Would You Do It?

- The Deposit is Small
- Limited Access to Land, Power, or Water
- Access to Capital
- Permitting Difficulties
- Other?

Heap Leach Orebodies- Screening

- Are Heap Leach Orebodies a Good Fit?
- Not Really!
 - Valuable pad space
 - Difficulty segregating ore/solutions
 - Long leach cycles
 - Metallurgical balance challenges
 - Lower grades can't support transport costs

Ore Resources - Screening

- Gold Resources above 0.100 opt
- List of Copper Resources

Selected Nevada Gold Resources

Table 7. Contained Gold in Selected Precious Metal Resources in Nevada

Deposit Name	Year	Tons	Au, opt	Classification	Contained Oz Au
Fondaway Canyon	2017	2,260,000	0.18	Measured & Indicated	406,800
Fondaway Canyon	2017	3,530,000	0.19	Inferred	670,700
Pyramid	2003	4,000	0.516	Inferred	2,064
Buckskin	1978	561,500	0.18	Unclassified	101,070
Big Springs - North Sammy	2014	1,607,000	0.13	Unclassified	208,910
Kinsley Mtn. - Secret Canyon	2015	1,619,000	0.17	Measured & Indicated	275,230
Tip Top	2009	388,920	0.096	Measured & Indicated	37,336
Gold Wedge	2005	330,000	0.31	Measured & Indicated	102,300
Tonopah (Midway)	2011	114,000	0.3017	Inferred	34,394
Subtotal		10,414,420	0.177		1,838,804
Winnemucca Mountain	1998	N/A		Indicated	300,000
Victorine	2000	N/A		Proven & Probable	120,000
Victorine	2000	N/A		Possible	200,000
Grand Total Contained Au					2,458,804

Sulfide Copper Resources

Table 8. Sulfide Copper Resources in Nevada

Deposit Name	Year	Tons (000)	% Cu	Classification	Contained Cu Pounds (000)
Yerington District					
Ann Mason	2017	1,400,000	0.32	Measured & Indicated	9,809,000
Ann Mason	2017	623,000	0.29	Inferred	3,987,200
Blue Hill - Sulfide	2017	49,860	0.17	Inferred	169,524
MacArthur - Sulfide	2014	1,098	0.292	Measured & Indicated	6,408
MacArthur - Sulfide	2014	134,900	0.283	Inferred	764,074
Pumpkin Hollow - Open Pit	2015	566,400	0.43	Measured & Indicated	4,840,000
Pumpkin Hollow - Open Pit	2015	8,000	0.52	Inferred	83,000
Pumpkin Hollow - U'ground	2015	54,100	1.39	Measured & Indicated	1,503,000
Pumpkin Hollow - U'ground	2015	29,200	1.09	Inferred	636,000
Yerington - Sulfide	2013	105,000	0.3	Measured & Indicated	633,000
Yerington - Sulfide	2013	128,000	0.23	Inferred	600,000
Subtotal Yerington District		3,099,558	0.37		23,031,206
Other Districts					
B and C Springs - Open Pit	2007	105,902	0.068	Measured & Indicated	144,027
B and C Springs - U'ground	2007	2,846	0.334	Measured & Indicated	19,011
Desert Scheelite	2012	9,270	0.14	Measured & Indicated	26,000
Desert Scheelite	2012	1,642	0.17	Inferred	5,510
Liberty	2014	566,159	0.084	Measured & Indicated	956,400
Liberty	2014	148,598	0.115	Inferred	341,800
Marjuba Hill	1965	30	3.0	Unclassified	1,800
New York Canyon - Copper Queen	1979	142,360	0.35	Unclassified	996,520
Pine Tree	2011	240,840	0.09	Measured & Indicated	433,512
Pine Tree	2011	196,760	0.09	Inferred	354,168
Tonopah	1999	98,000	0.343	Measured & Indicated	672,280
Victoria	1981	1,375	2.15	Proven and Probable	59,125
Subtotal Other Districts		1,513,782	0.13		4,010,153
Grand Total		4,613,340	0.293		27,041,359

Oxide Copper Resources

Table 9. Oxide Copper Resources in Nevada

					Contained Cu Pounds (000)
Deposit Name	Year	Tons (000)	% Cu	Classification	
Contact	2016	213,113	0.2	Measured & Indicated	831,494
Contact	2016	12,982	0.2	Inferred	52,188
Blue Hill - Oxide	2017	47,440	0.17	Inferred	179,370
Blue Hill - Mixed	2017	24,960	0.18	Inferred	98,210
MacArthur - Oxide	2014	159,094	0.212	Measured & Indicated	675,513
MacArthur - Oxide	2014	243,417	0.201	Inferred	979,510
Yerington - Oxide	2013	23,500	0.25	Measured & Indicated	118,000
Yerington - Oxide	2013	26,000	0.23	Inferred	118,000
New York Canyon - Longshot	2010	16,250	0.43	Measured & Indicated	139,750
New York Canyon - Longshot	2010	2,900	0.31	Inferred	17,980
Total Oxide Copper		769,656	0.21		3,210,015

Potential Custom Processors

- *We canvassed the mill operators*
- *Here is what they told us*

Potential Custom Processors

- *Six Oxide Mills*

- Aurora Mill
- Midas Mill
- Crown Point Mill
- Goldwedge Mill
- Newmont Mill 5
- Juniper Mill

Potential Custom Processors

- *Six Refractory Mills*

- Newmont Mill 6
- Sage Mill
- Jerritt Canyon
- Goldstrike Roaster
- Goldstrike Autoclaves
- Lone Tree

Potential Custom Processors

- *Three Loaded Carbon Plants*
 - Pan
 - Borealis
 - Relief Canyon

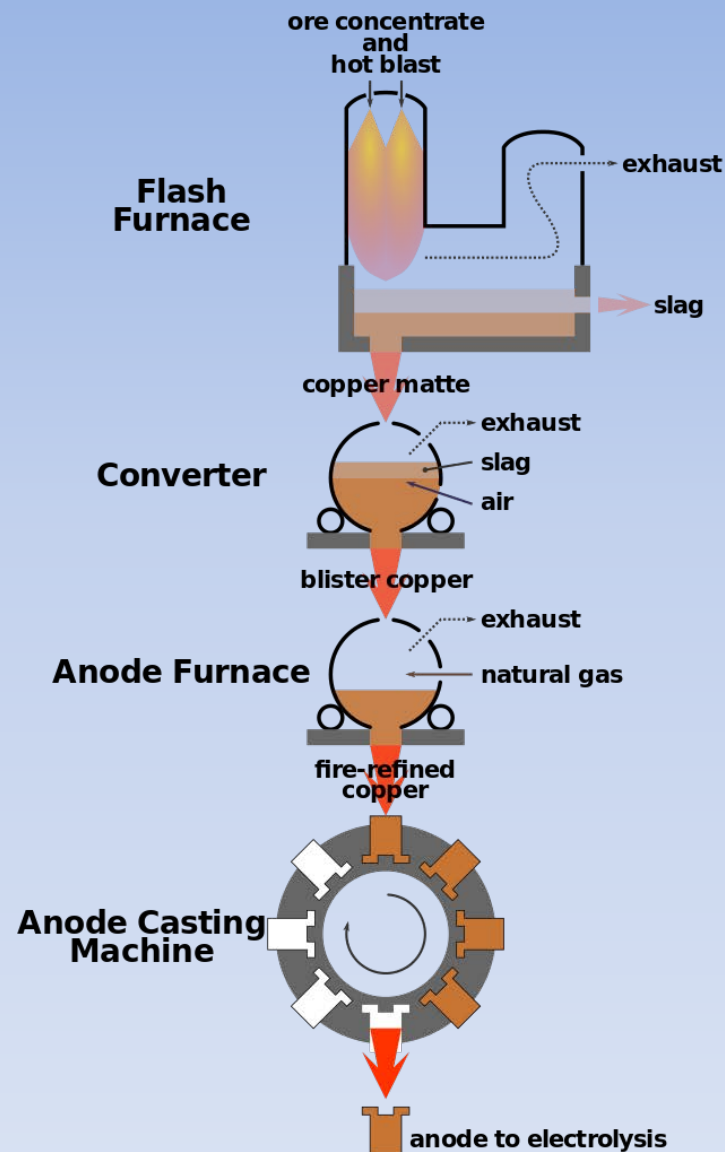
Potential Custom Processers

- *Two Copper Flotation Concentrators*
 - Robinson
 - Phoenix

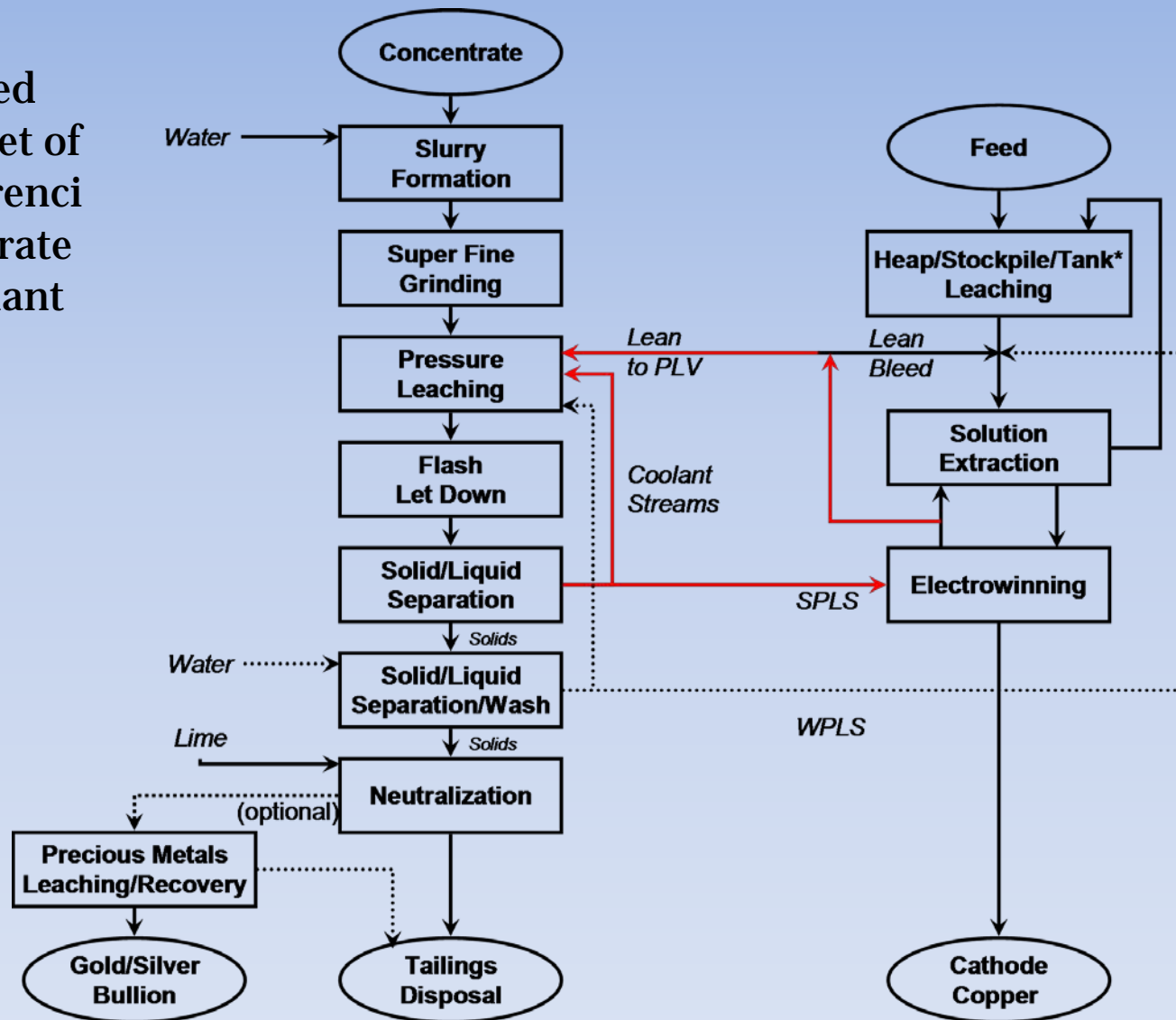
The Copper Market

- Worldwide demand is forecast to be 25 million metric tonnes
- Annual growth rate of 3% per year
- Worldwide production is about 20 million tonnes
- Global smelting – 19 million metric tonnes
 - (Only 3 U.S. smelters left)
- U.S. exports 1 million tonnes of concentrate per year
 - 350,000 tonnes from Nevada and growing
 - Transportation charges \$90 - \$200 per tonne

Simplified Flowsheet of a Copper Smelter

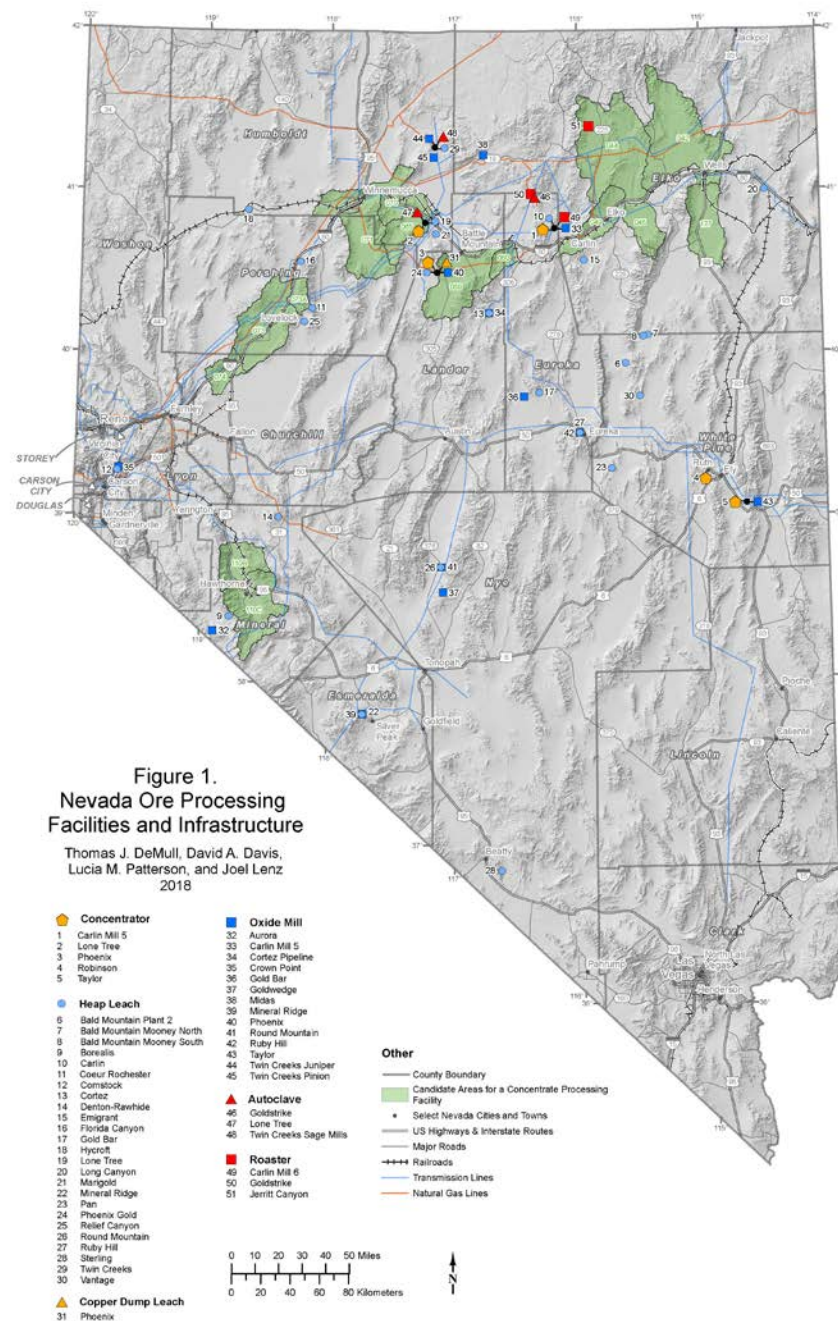


Simplified Flowsheet of The Morenci Concentrate Leach Plant





Phoenix Copper Leach



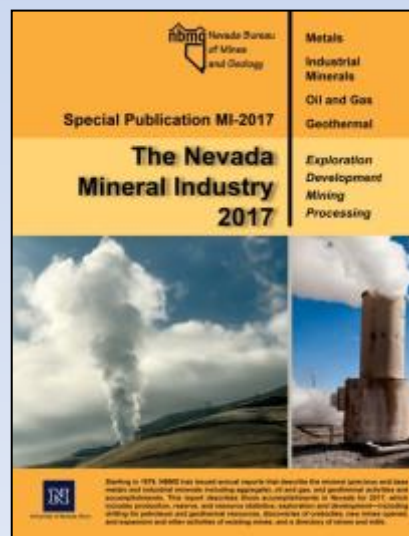
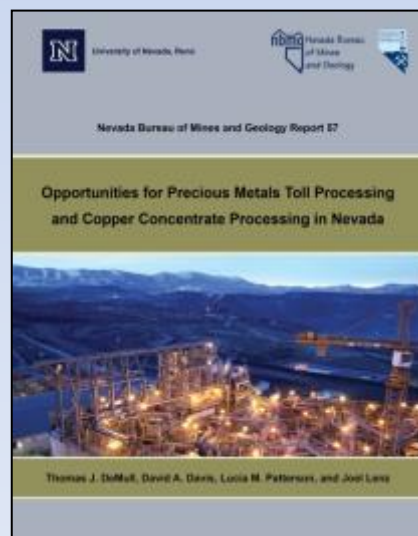
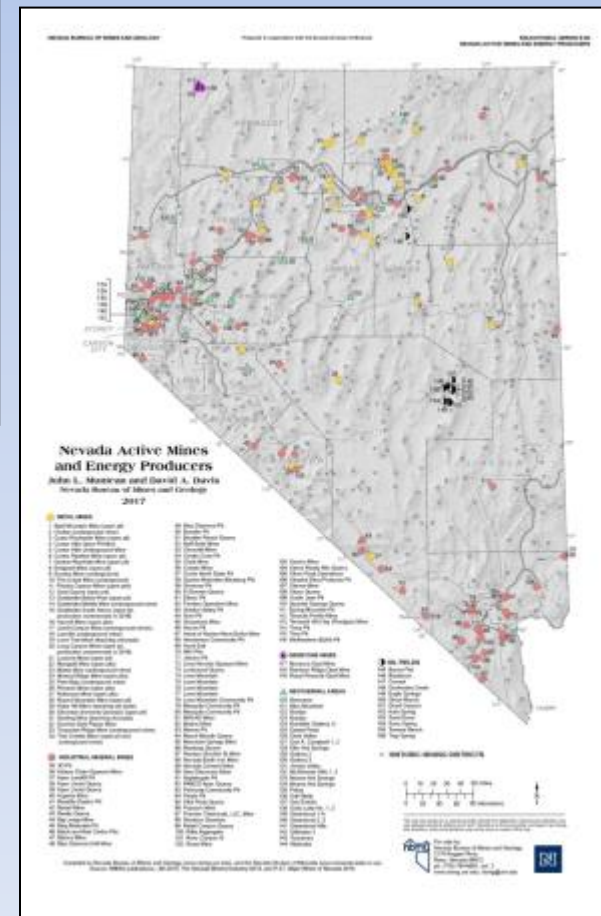
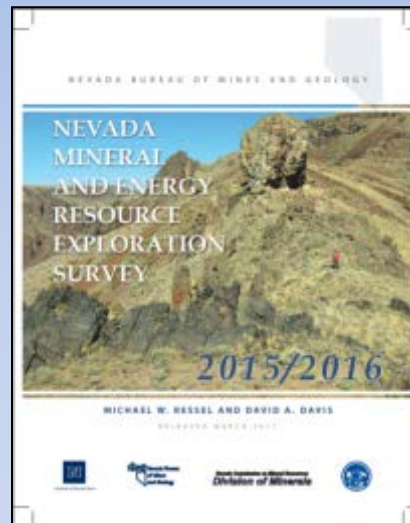
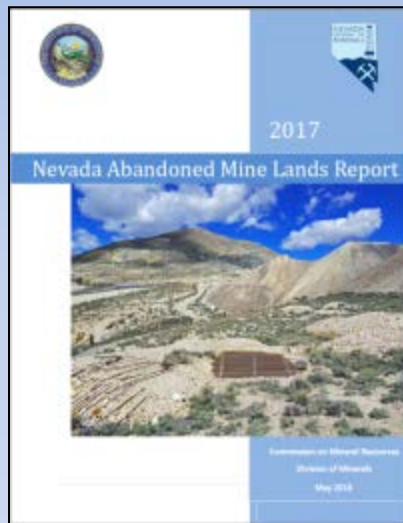
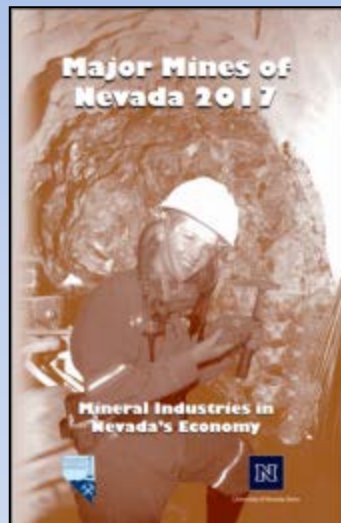
Concentrate Leach Fatal Flaw Analysis

1. Concentrate Supply – **Upward Trend**
2. Environmental Permitting - **Probable**
3. Land Use Policy - **Positive**
4. Accessibility and Infrastructure - **Attractive**
5. Return on Investment – **Possible**


Ore Tolling Study Questions

- Is there a need for a custom milling facility in Nevada for the processing of precious metals ores, or are there existing facilities that have the capacity to process toll ores? Existing facilities have capacity.
- Would it be beneficial to construct a facility for processing copper concentrates in Nevada? Possibly a concentrate leach plant


Publications



Questions?



State of Nevada
Commission on Mineral Resources
Division of Minerals




NV ^{gov} Agencies Jobs About Nevada

Google Custom Search

ADA Americans with Disabilities Act

HOME ABOUT US COMMISSION PROGRAMS NEWS FAQs CONTACT US



AML: Division of Minerals complete AML hard closures at the Arden Mine near Las Vegas, Nevada, April 26, 2019.

Current Information

- Dissolved Mineral Resources permitting page
- 2017 Nevada Excellence in Mine Reclamation Award
- 2015/2016 NV Mineral and Energy Resource Exploration Survey (NBMG)
- Recent Presentations
- Information Related to Proposed Land Use Plans and Withdrawals

Public Workshop(s) and Hearings(s)

- Dissolved Mineral Resource Exploration Regulation Adoption Hearing
- Response to Summary Comments on Proposed Regulations, April 25, 2018

Employment Announcement(s)

- None at this time.
- How To Apply for a State Job


Education Workshop(s)

- 34th Annual Northern Nevada Earth Science Education Workshop 2018
 - July 17 and 18, 2018
 - Tentative Location: Wooster High School, Reno, Nevada.
 - Register at:
 - Direct Link: (Website Registration URL Pending)
 - NVMA Link from their Mineral Education Workshops page: <https://www.nevadamining.org/mineral-education-workshops/>


Important Links

- Nevada Division of Minerals Open Data Site-GIS files
- State and Federal Permits Required Before Mining or Milling Can Begin - February 2015
- NIDOM YouTube Channel
- NIDOM Request for Public Records form
- Nevada Bureau of Mines and Geology


Programs




MINING



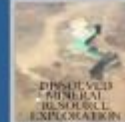
OIL AND GAS




ABANDONED MINE LANDS



BOND POOL



DISSOLVED MINERAL RESOURCE EXPLORATION



EDUCATION & OUTREACH