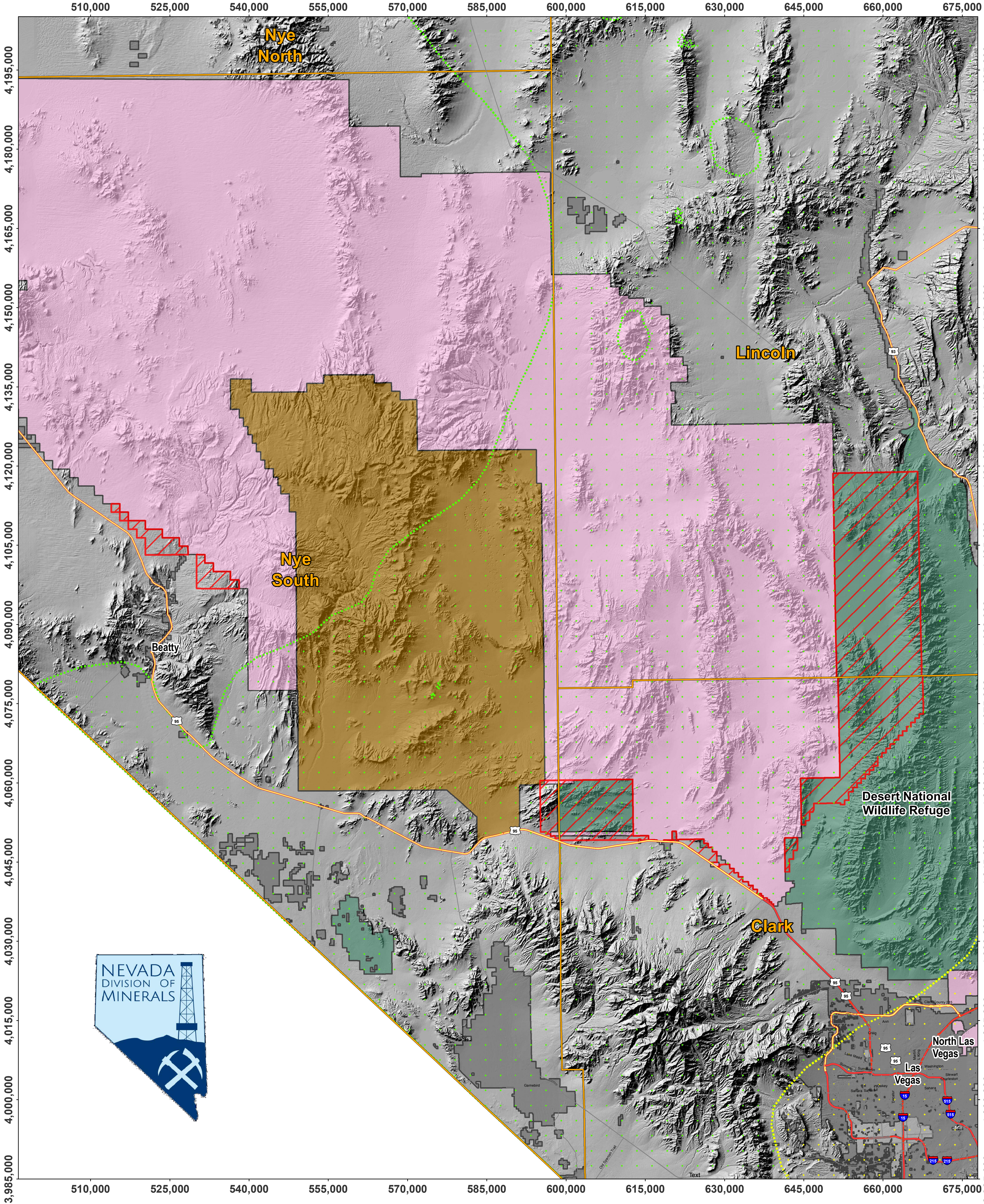


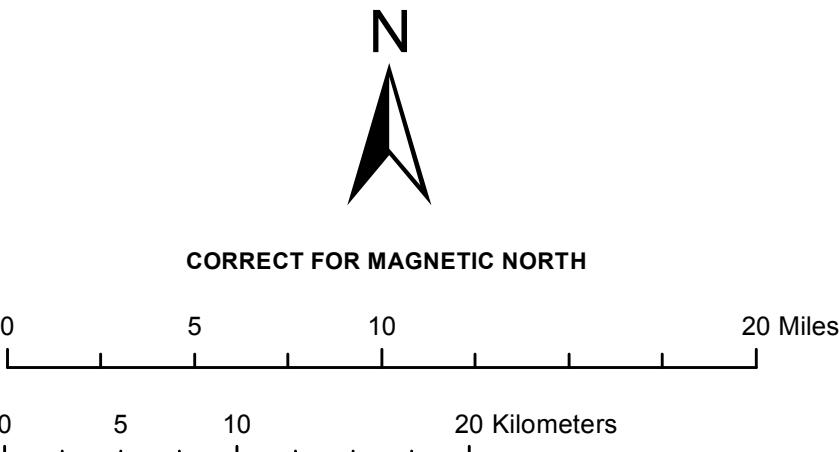
# NEVADA DIVISION OF MINERALS

Map created by Garrett A. Wake

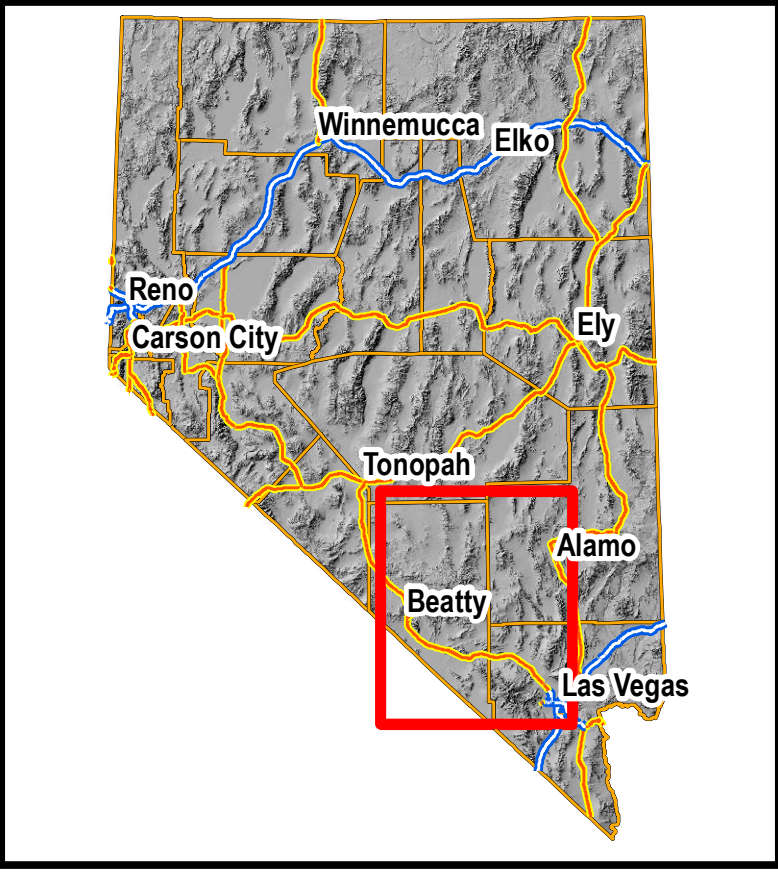
# Proposed Nevada Test and Training Range (NTTR) Expansion -- Oil, Gas & Geothermal Impact



## Mineral Resources Impact Map



MAP CREATED BY NEVADA DIVISION OF MINERALS  
Map is for NEVADA DIVISION OF MINERALS use only  
NOT FOR PUBLIC USE  
Data provided as of: 9/9/2016  
NAD 83 zone 11



Land Status		NTTR Expansion
Department of Defense	County	
Department of Energy	<b>Oil &amp; Gas Potential</b>	
Fish and Wildlife Service	High Potential	
Private / Patented	Moderate Potential	
Bureau of Land Management	Low Potential	
	Very Low Potential	

- Proposed withdrawal lies within "very low" or "low" oil & gas potential zones.  
- No active oil, gas or geothermal wells lie within the proposed withdrawal regions.  
- The geothermal potential within the proposed withdrawal regions is marginal\*.  
(\*Not displayed; see NBMG pub M151 & OF2009-10)

The current NTTR renewal includes 2,949,603 acres. The proposed withdrawal includes an additional 301,507 acres.