

UPDATE ON NEVADA MINERAL PRODUCTION AND EXPLORATION

**Northwest Mining Association
Annual Meeting
John Ascuaga's Nugget
Sparks, Nevada
December 4, 2013**



**Alan R. Coyner, President
Trident Exploration
9130 Double Diamond Parkway
Reno, NV 89511
alan@trident-exploration.com
775/359-8700**

THE MAIN POINT

10 Year Gold

High 1900.30 Low 374.40



Nevada continues to be a really great place to explore for and mine gold - and many other mineral commodities.

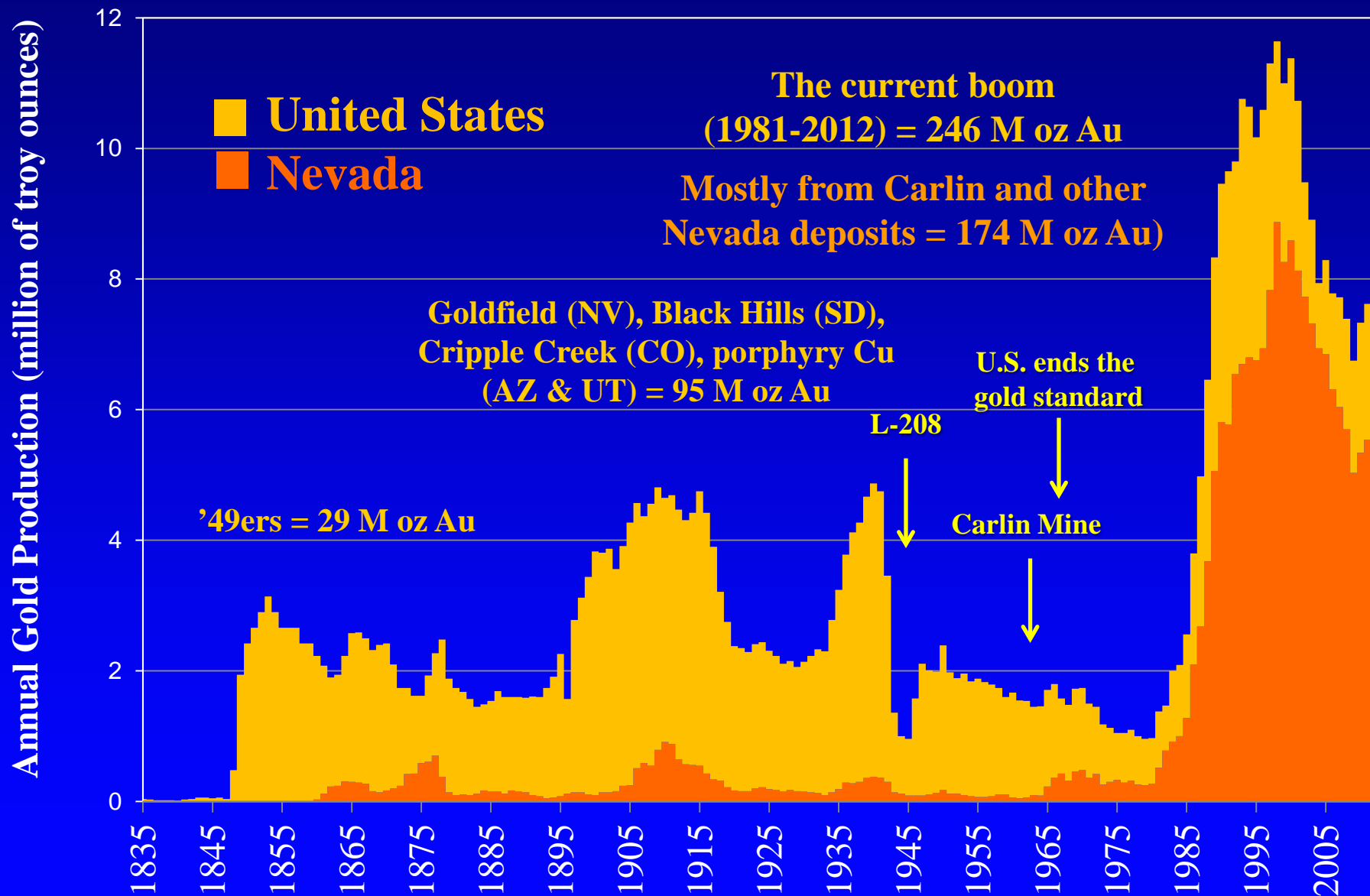
www.kitco.com

Based on New York Close

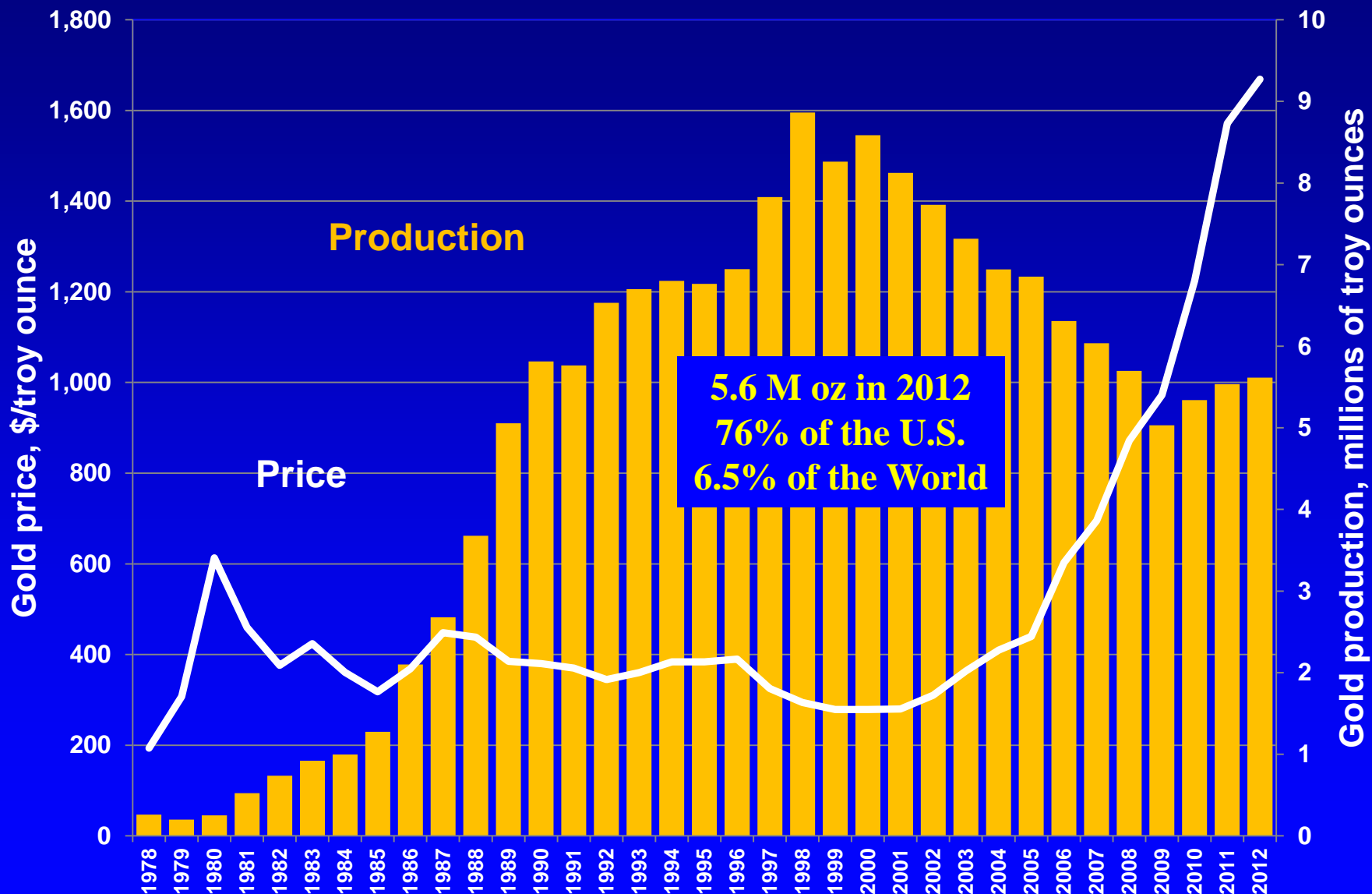
NEVADA MINING INFO

- **Major Mines of Nevada**
 - NDOM (<http://minerals.state.nv.us>)
- **Nevada Exploration Survey**
 - NDOM and NBMG
- **The Nevada Mineral Industry**
 - NBMG (www.nbmng.unr.edu)
- **Economic Overview of the Nevada Mining Industry**
 - NvMA (www.nevadamining.org)

GOLD PRODUCTION 1835-2012



NEVADA GOLD PRODUCTION 1978-2012

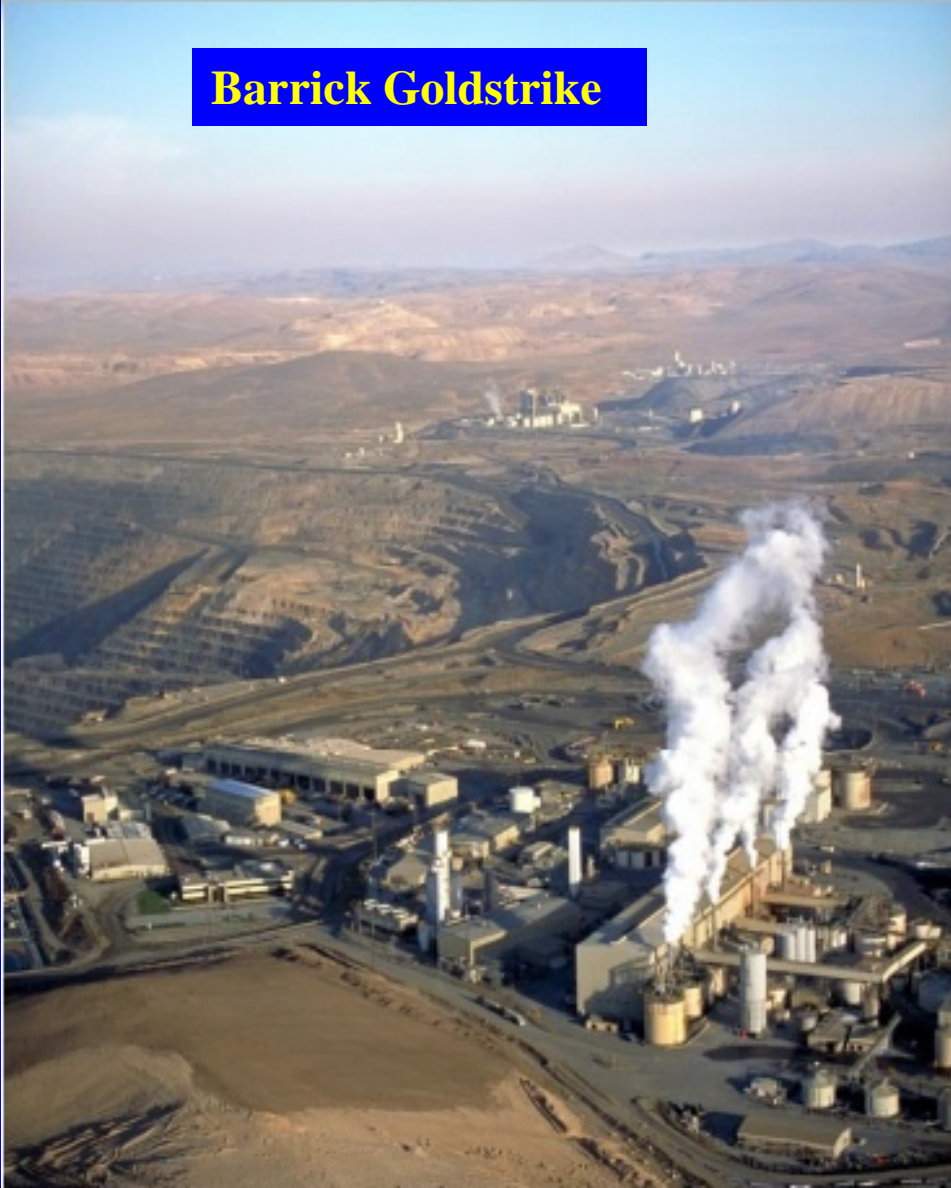


NEVADA VS. THE WORLD 2012

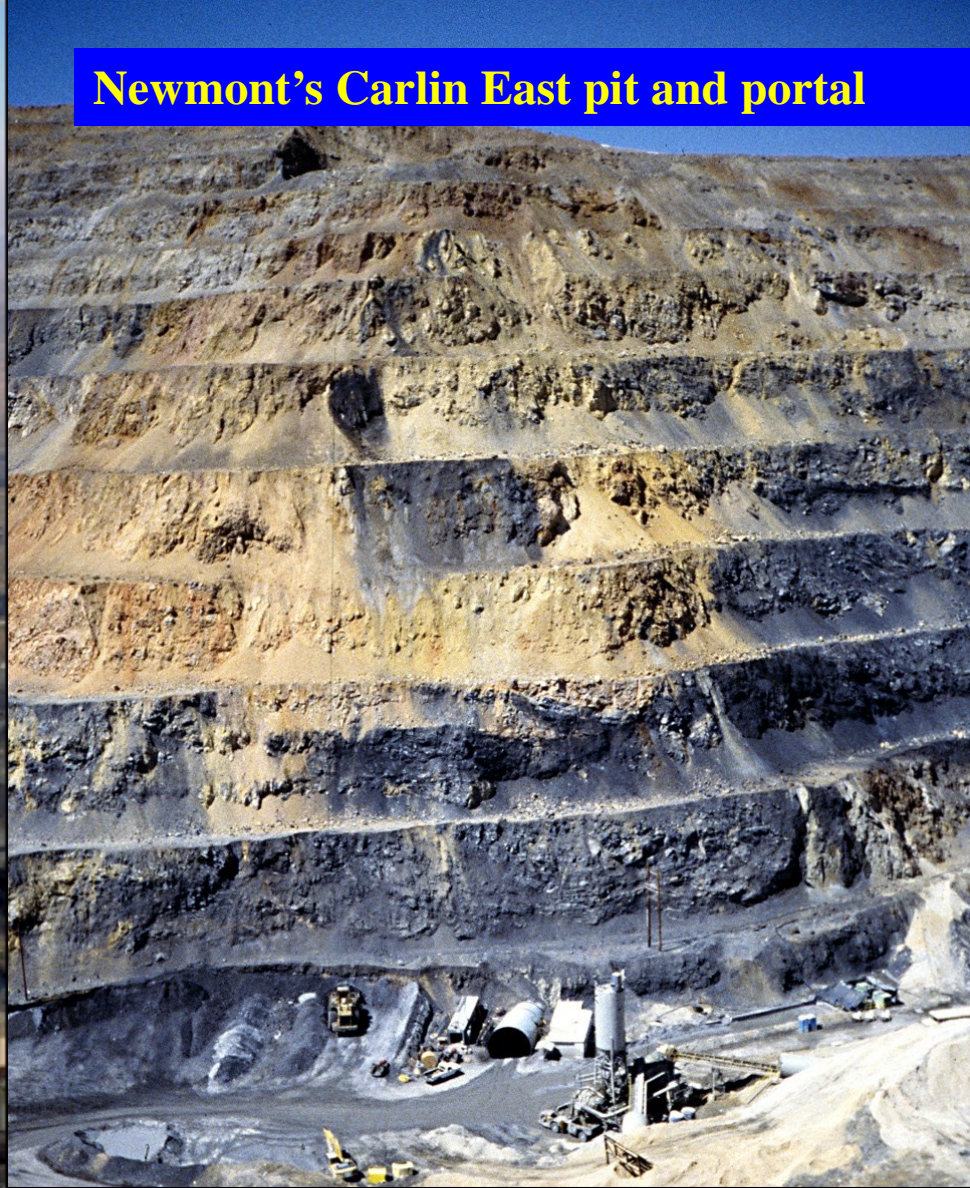
	Country	Gold Production (metric tons)
1	China	370
2	Australia	250
3	United States	230
4	Russia	205
5	NEVADA	175
6	South Africa	170
7	Peru	165
	WORLD	2,700

Data from USGS Mineral Commodity Summary 2013

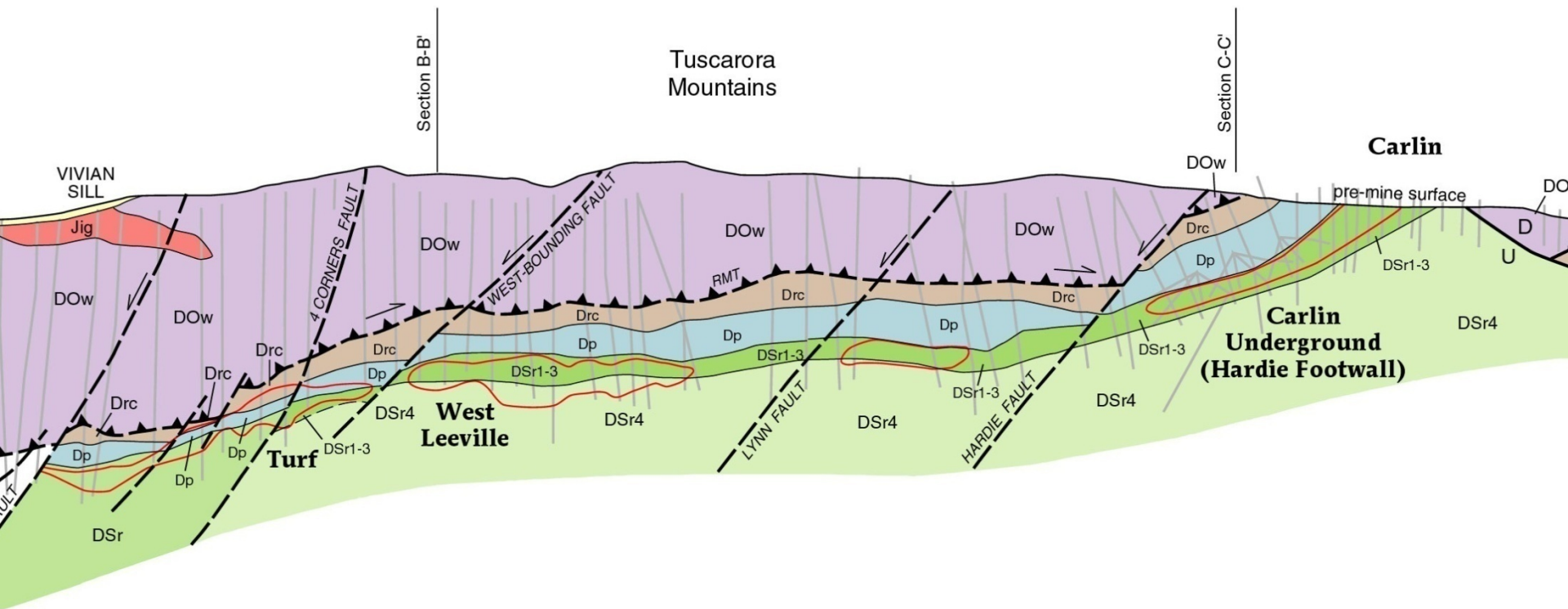
Barrick Goldstrike



Newmont's Carlin East pit and portal



**Global gold production in 2012 (2,700 metric tons) exceeded the cumulative production from the Carlin trend (2,504 tons).
The world mines the equivalent of a Carlin trend every year.**



By the end of 2012, the Carlin trend had produced a total of 80.5 million ounces of gold (2,504 tonnes). If production levels hold, the trend will produce a cumulative amount of 100 million ounces by 2022.

Section by Steve Moore & others, Newmont, NBMG Bulletin 111 - *Gold Deposits of the Carlin Trend*, edited by Tommy Thompson, Lew Teal, and Dick Meeuwig (204 pages, with detailed geologic maps and sections – \$35 from www.nbmj.unr.edu)

**24 major gold operations
(10 not on the Carlin
trend with production
>100,000 ounces in 2012)**

Major Mines, Oil Fields, and Geothermal Plants

- Precious Metals
- Industrial Minerals
- ▼ Copper and Molybdenum
- Oil Field
- Geothermal Plant



NEVADA'S TOP GOLD PRODUCERS 2012

OPERATION	PRODUCTION (oz)
Barrick Cortez	1,369,966
Barrick Goldstrike	1,173,712
Newmont Carlin Operations	987,959
Newmont Twin Creeks	408,751
Barrick/Kinross Round Mountain	367,595
Barrick/Newmont Turquoise Ridge	191,754
Barrick Bald Mountain	171,154

BARRICK CORTEZ



Cortez Hills OP



Cortez Hills UG

**Barrick Cortez mined
1,369,966 oz Au in 2012
(939,004 OP and 430,962 UG)
Cortez property reserve is
15.058 M oz at 0.049 oz/ton
(proven and probable)**



Pipeline

BARRICK GOLDSTRIKE



Meikle



Betze-Post

Gold	2012 Production	Cumulative Production	Reserve (P&P)	Reserve Grade
Betze-Post	812,707 oz	30.8 M oz	8,933,000 oz	0.094 oz/ton
Meikle	327,203 oz	8.8 M oz	3,405,000 oz	0.233 oz/ton
Total	1,139,910 oz	39.6 M oz	12,338,000 oz	0.113 oz/ton

NEWMONT CARLIN OPERATIONS



Gold	2012 Production	Cumulative Production	Reserve (P&P)	Reserve Grade
Open Pits	? Oz	? M oz	11,650,000 oz	0.037 oz/ton
Underground	? Oz	? M oz	6,230,000 oz	0.286 oz/ton
Total	987,959 oz	45,690,258 oz	17,880,000 oz	0.053 oz/ton

NEWMONT TWIN CREEKS



Gold	2012 Production	Cumulative Production	Reserve (P&P)	Reserve Grade
Open Pit	408,751 oz	12,175,194 oz	3,400,000 oz	0.068 oz/ton

BARRICK/KINROSS ROUND MOUNTAIN

50%

50%



	2012 Production	Cumulative Production	Reserve (P&P)	Reserve Grade
Gold				
Open Pit	367,595 oz	13.4 M oz ?	2,486,000 oz	0.018 oz/ton

BARRICK/NEWMONT TURQUOISE RIDGE

75%

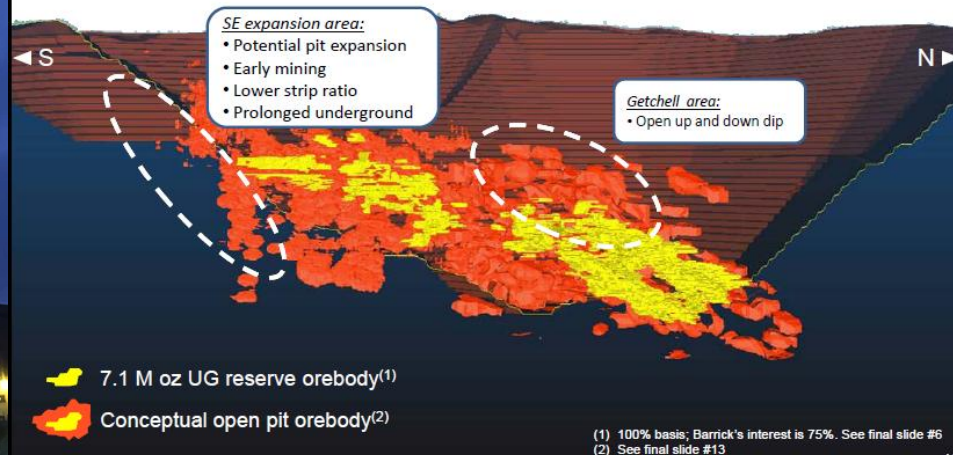
25%



Turquoise Ridge- Open Pit Evaluation



- Confirming OP expansion target in southeast
- In-fill drilling upgrading and adding resources and inventory
- New high-grade UG zones, open up-dip



Gold	2012 Production	Cumulative Production	Reserve (P&P)	Reserve Grade
Underground	191,754 oz	1,733,146 oz	7,753,000 oz	0.381 oz/ton

BARRICK BALD MOUNTAIN



Gold	2012 Production	Cumulative Production	Reserve (P&P)	Reserve Grade
Open Pit	171,154 oz	2,628,532 oz	5,161,000 oz	0.017 oz/ton

TOP UNDERGROUND GOLD PRODUCERS



Barrick's Cortez Hills Underground surpassed Barrick Goldstrike's Meikle in 2011 and continues as the top underground gold producer

Cortez Hills
430,962 oz

Meikle
327,203 oz

OTHER NEVADA GOLD PRODUCERS 2012

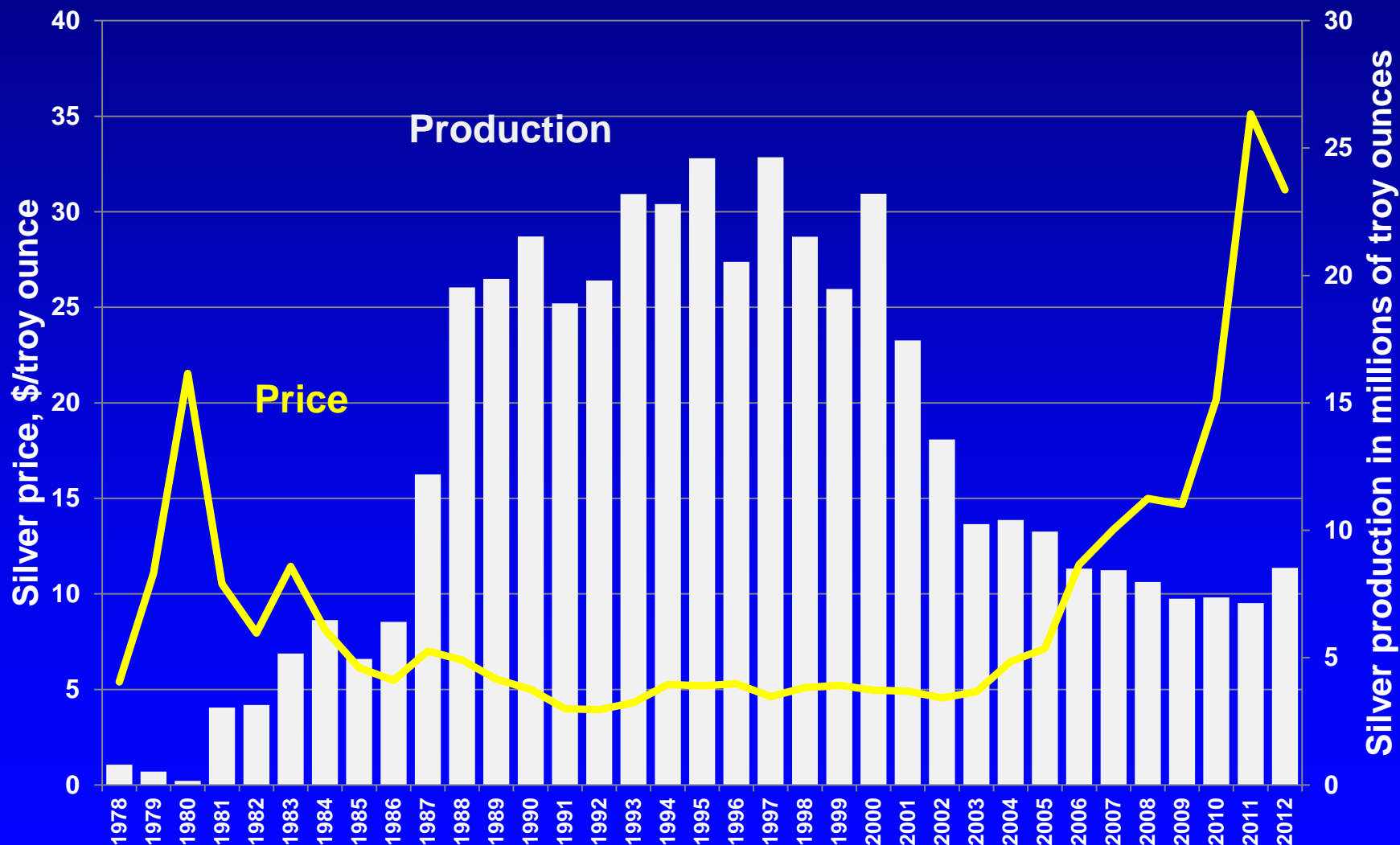
OPERATION	PRODUCTION (oz)
Newmont Phoenix	158,843
Goldcorp/Barrick Marigold	144,382
Allied Nevada Hycroft	114,382
Veris Gold Jerritt Canyon	105,627
Newmont Midas	82,922
Rodeo Creek Hollister	62,423
Jipangu Florida Canyon/Standard	43,575
Barrick Homestake Ruby Hill	41,242
Coeur Rochester	38,071
Mineral Ridge Gold	32,066
KGHM International Robinson	30,948



"Forget gold. Strategic metals are where it's at."

NEVADA SILVER PRODUCTION

2012 = 8,527,480 oz



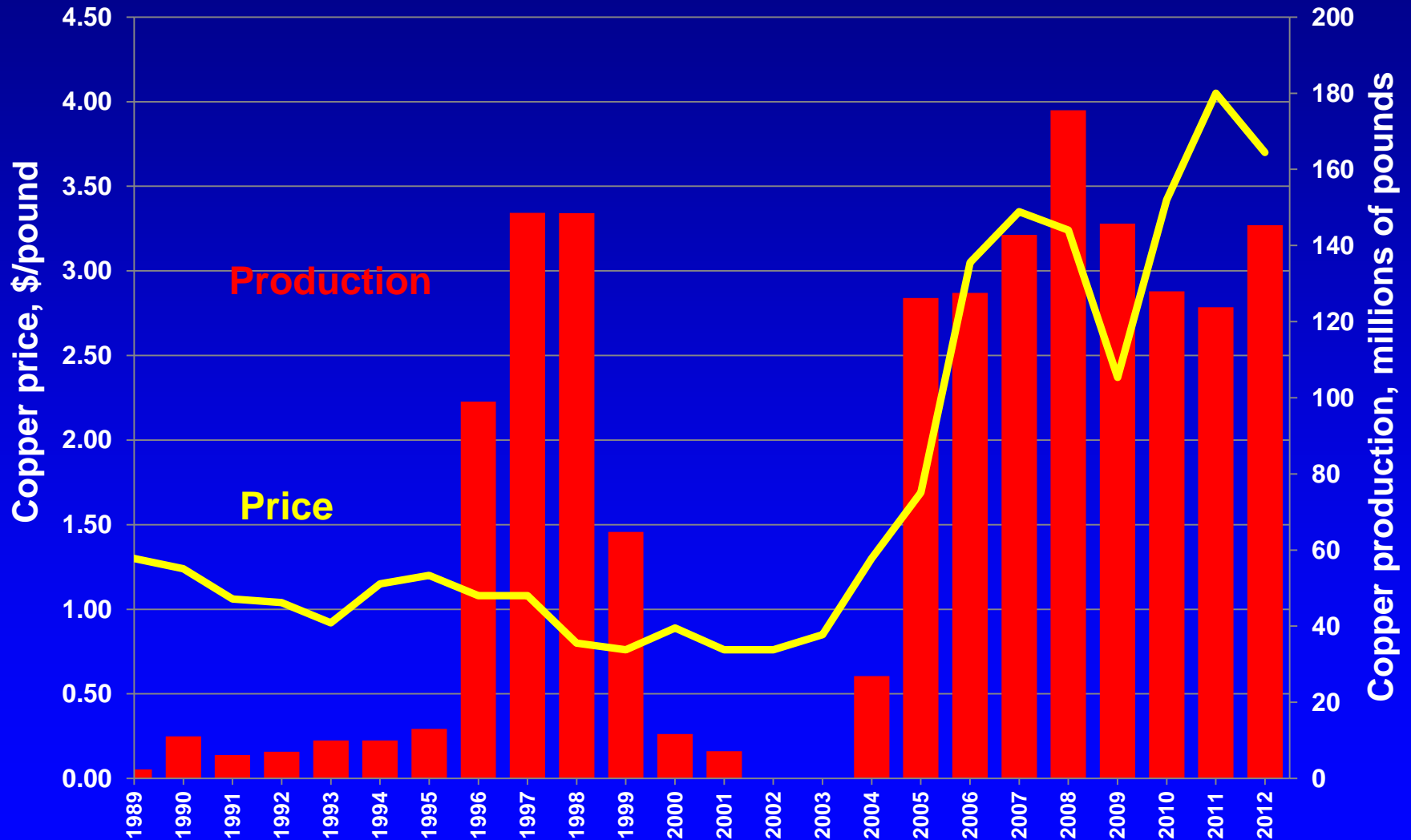
NEVADA'S TOP SILVER PRODUCERS 2012



Silver	2012 Production	Cumulative Production	Reserve (P&P)	Reserve Grade
Coeur Rochester	2,801,501 oz	136,597,328 oz	55.8 M oz	0.570 oz/ton
Newmont Phoenix	1,325,200 oz	6,361,530 oz	112.6 M oz	0.254 oz/ton
Newmont Midas	1,247,994 oz	20,867,271 oz	4.4 M oz	7.791 oz/ton

NEVADA COPPER PRODUCTION

2012 = 145,318,737 lbs



NEVADA'S COPPER PRODUCERS 2012



Copper	2012 Production	Cumulative Production	Reserve (P&P)	Reserve Grade
KGHM Robinson	117,509,548 lbs	? M lbs	N/A	N/A
Newmont Phoenix (copper leach)	27,809,189 lbs	127,346,271 lbs	1.290 B lbs 0.850 B lbs	0.15% 0.24%

OTHER NEVADA MINERAL PRODUCTION

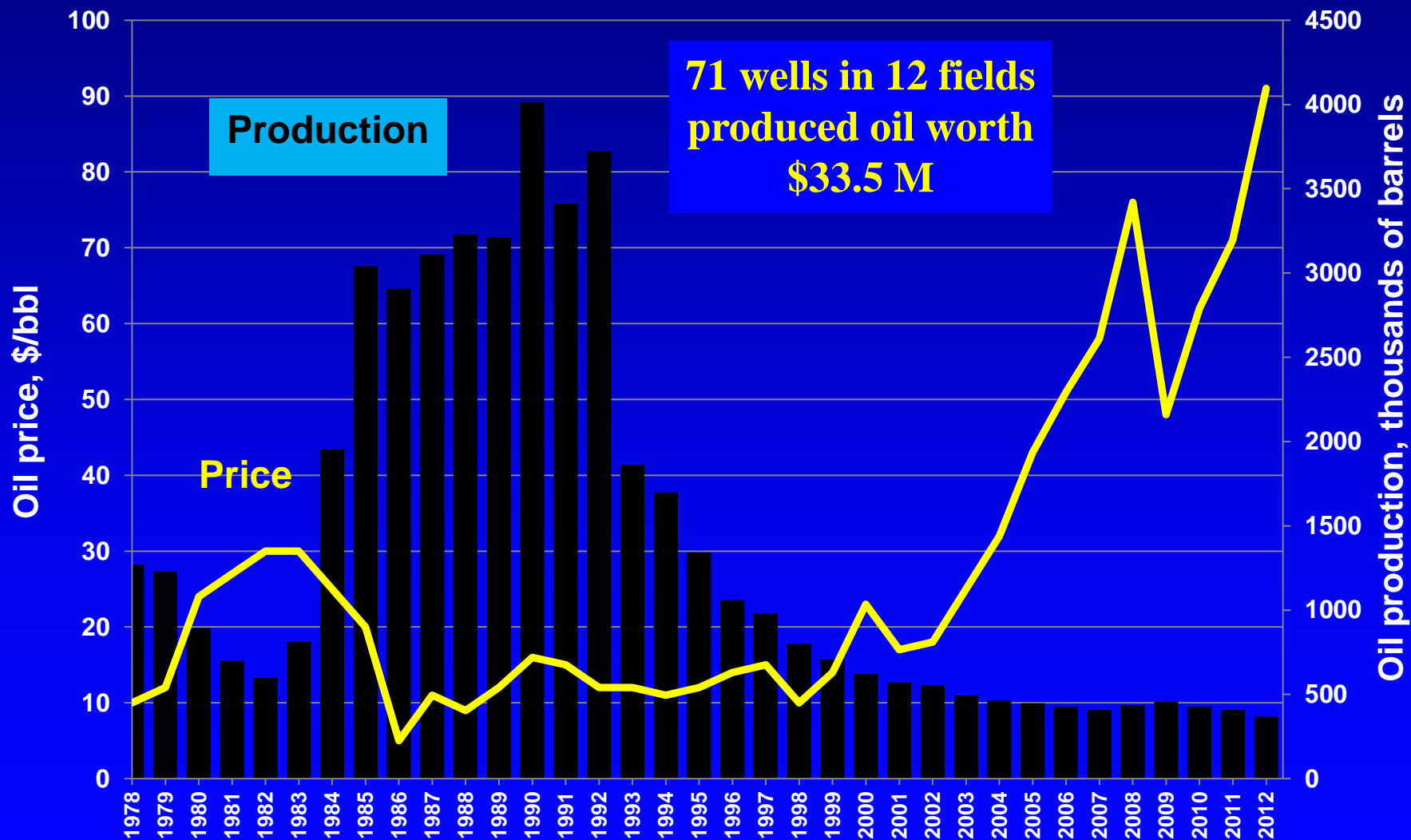
- **Nevada led the nation in nonfuel mineral commodities by value – followed by AZ, MN, UT, AK, FL, CA, and TX**
- **Only producer in the U.S. of magnesite, lithium, and specialty clays sepiolite and saponite**
- **Led the U.S. in production of gold and barite**
- **Other commodities include: aggregate, lime, cement, silica sand, diatomite, gypsum, clays, molybdenum, perlite, iron ore, dimension stone, salt, semiprecious gemstones (turquoise and opal), and mercury**
- **Total value of the non-metallic minerals was \$214 M in 2012(excluding aggregates)**

WATERTON GLOBAL MINING

- **Part of a mining-focused investment fund**
- **JV partner (30%) with Scorpio Gold at Mineral Ridge mine**
- **Holds “senior secured credit facility” with Gryphon Gold at Borealis mine – Gryphon declared bankruptcy in June**
- **Acquired Hollister mine and Esmeralda mill out of bankruptcy, shut down mill and only exploration drilling at mine**
- **LOI with Newmont to buy Midas mine**

NEVADA PETROEUM PRODUCTION

2012 = 367,994 bbls

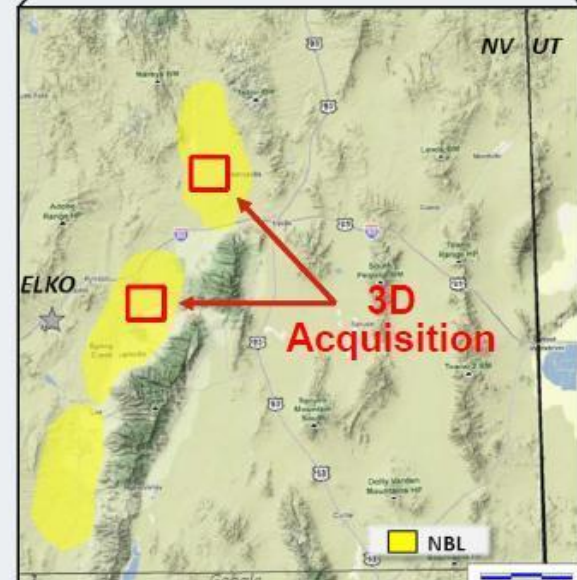
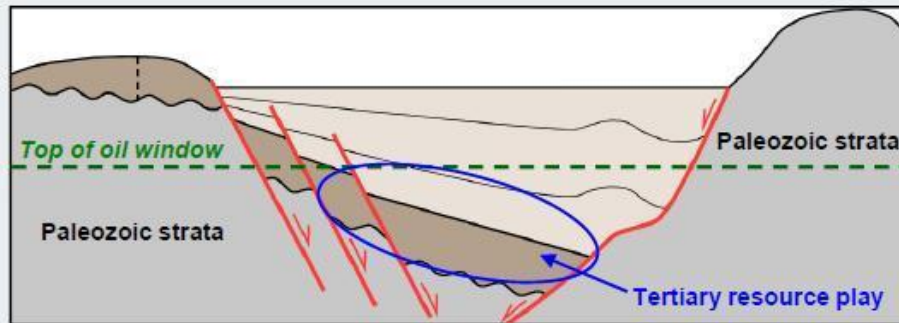


NOBLE ENERGY

Elko County, N.E. Nevada

Next growth possibility in U.S.

- ▶ **Tight Oil Play with Core Area Scale**
- ▶ **350,000 Net Acres Located in Elko County, N.E. Nevada**
- ▶ **Phased Pilot Test Program to Determine Viability**
 - ▲ 5 – 8 vertical wells in 2013
 - ▲ Production results in less than 12 months
- ▶ **Favorable Full-Cycle Economics**
- ▶ **Two 3D Surveys Completed to Date**



NOBLE ENERGY

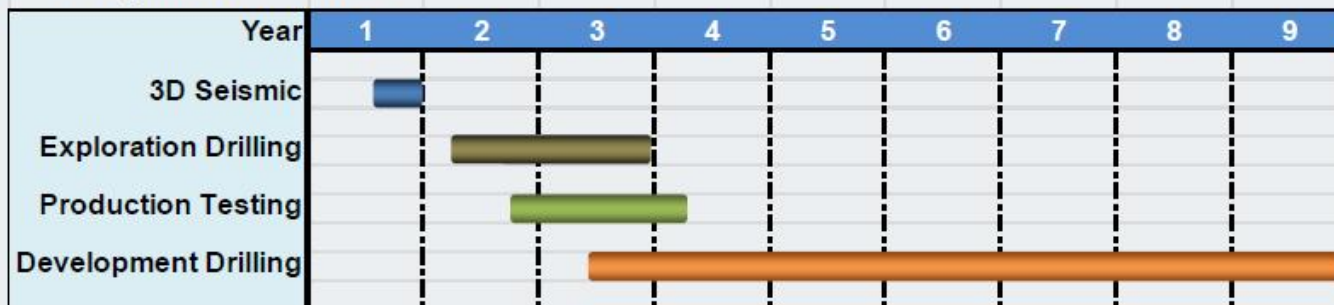
Elko County, N.E. Nevada Exploration Plan

Success case



Gross \$130 MM Exploration Investment over Four Years – Land, seismic, first 8 wells

Development Scenario



► Initial Production Late 2014

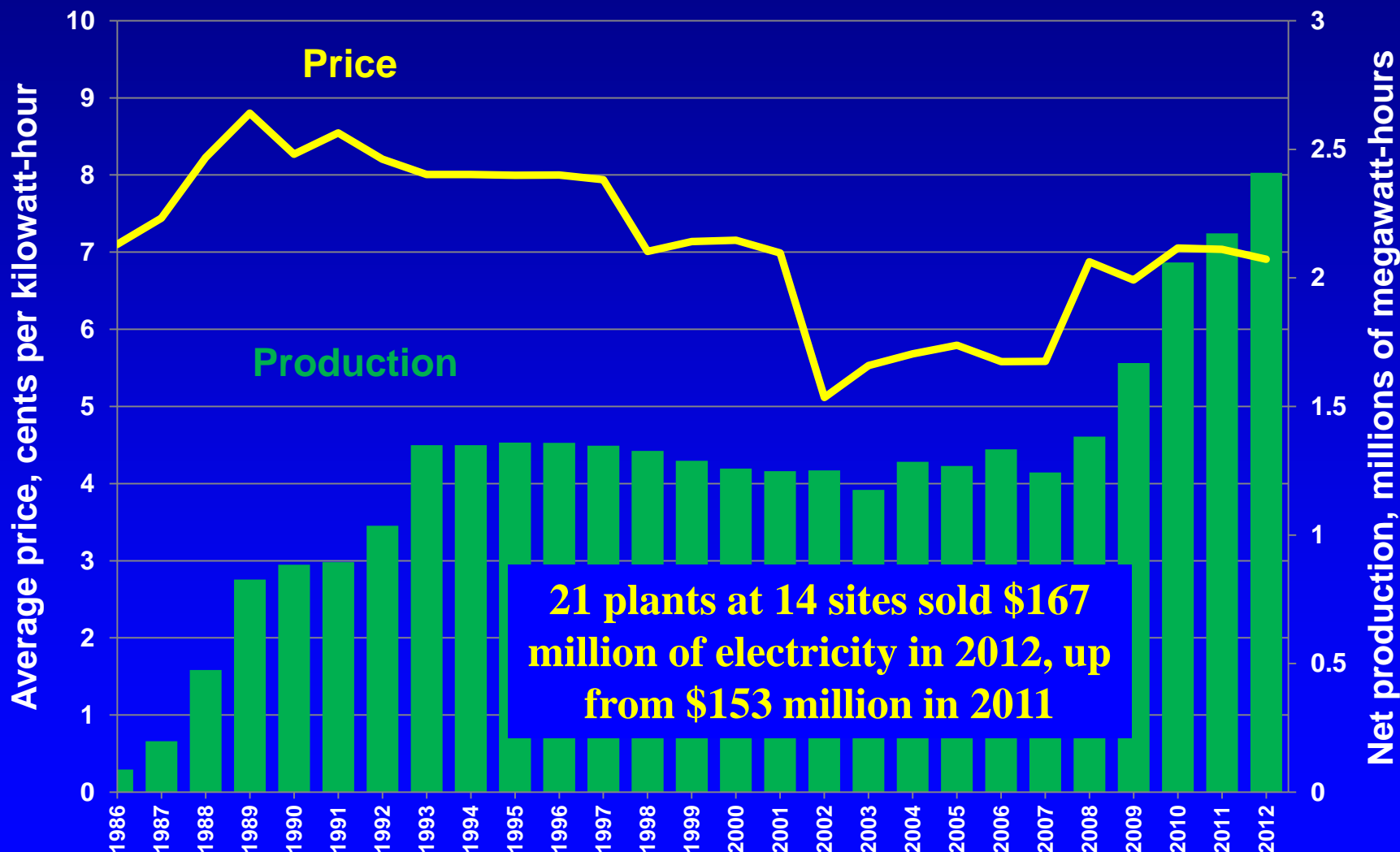
- ▲ Peak production 50 MBbl/d

► Success Metrics (full-cycle)

- ▲ 100% working interest
- ▲ \$13/BOE F&D
- ▲ BT ROR 35% – 45%, BT NPV10 \$5 – 8 B

NEVADA GEOTHERMAL ENERGY

2012 = 2,409,767 MWH



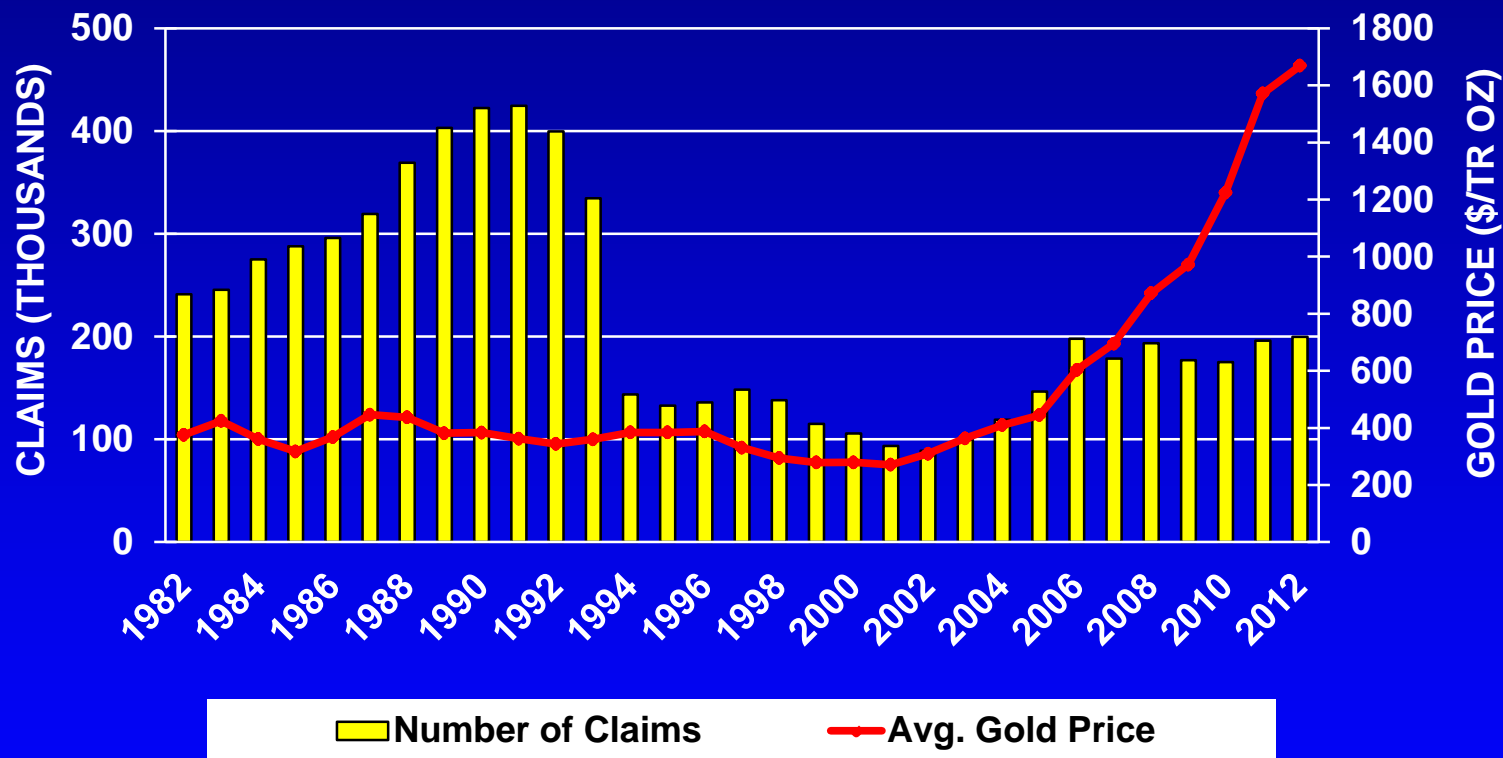
NEVADA MINING FINANCIAL ASSURANCE

(in millions)

	2003	2005	2007	2008	2009	2010	2011	2012	2013
Bonds	\$272	\$248	\$210.6	\$214.0	\$328.2	\$393.0	\$998.9	\$1,165.6	\$1,444.4
Letters of Credit		\$254	\$412.7	\$618.1	\$654.5	\$629.9	\$413.4	\$489.8	\$500.6
CD / Cash		\$4	\$4.7	\$9.3	\$3.9	\$6.1	\$7.0	\$11.7	\$12.9
Corp Guarantee	\$271	\$204	\$187.3	\$182.0	\$179.7	\$183.7	\$183.0	\$180.5	\$194.3
USFS	\$14	\$10	\$12.3	\$12.5	\$13.5	\$13.3	\$13.3	\$16.0	\$19.9
Bond Pool (NDOM)	\$1	\$1	\$2.3	\$2.7	\$4.1	\$4.0	\$4.3	\$5.3	\$3.5
Total	\$558	\$721	\$829.9	\$1,038.6	\$1,184.0	\$1,230.0	\$1,619.9	\$1,868.9	\$2,175.6

NOTE: Data from the Nevada Division of Environmental Protection

ACTIVE CLAIMS & GOLD PRICES 1982-2012

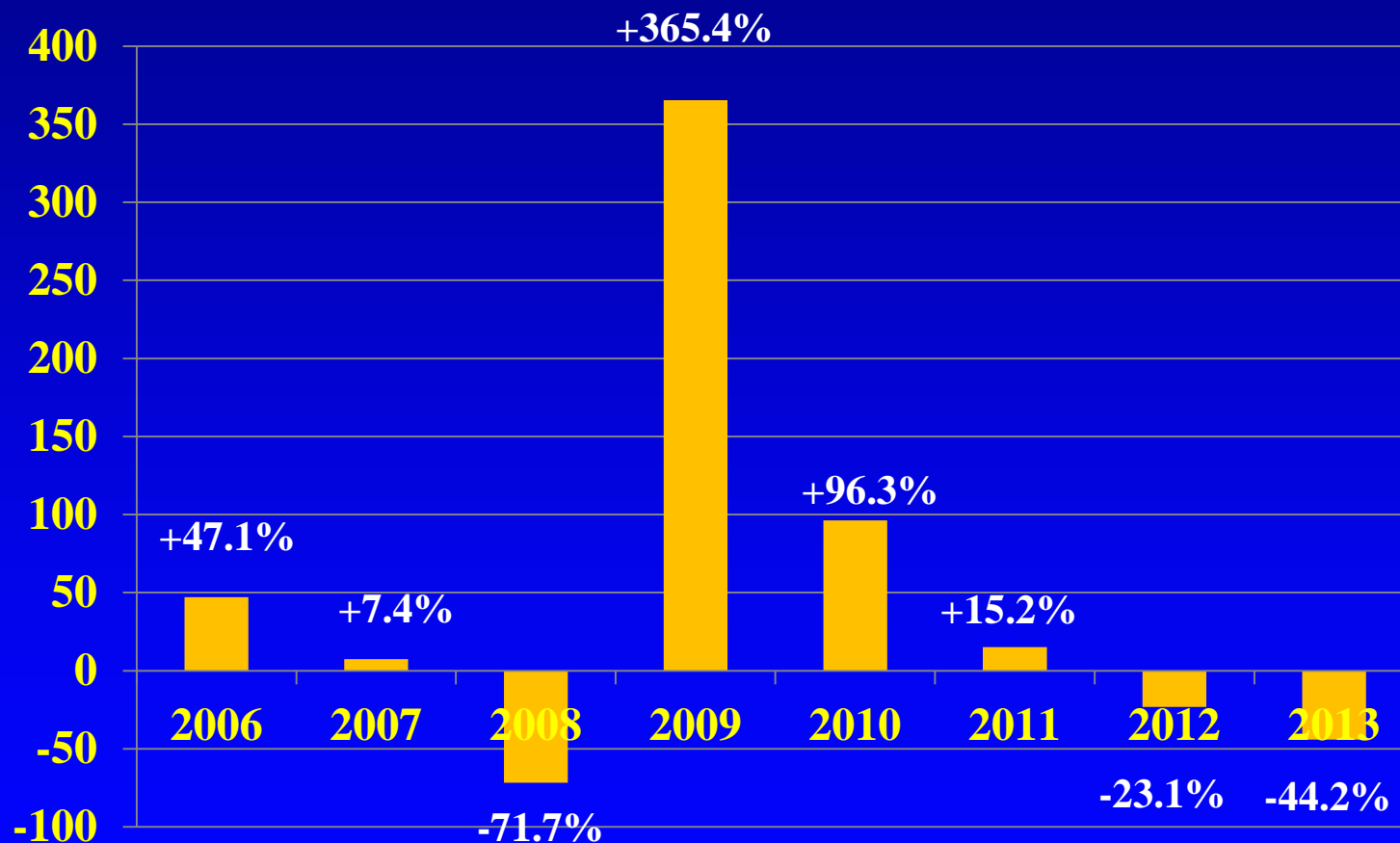


Active claims on October 1, 2012 was 199,738 (up 1.9% from 2011)

NOTE: Claim data from the BLM Public Land Statistics

NEVADA'S TOP 10 PROJECTS – 2006 to 2013

Percent Return on Investment



* Backward-Looking Statement: Although I have great hindsight, neither Trident Exploration or me, personally, have any expertise whatsoever to be able to advise people on how to invest. I am an exploration geologist, for goodness sake. Whatever you do, don't take any advice from me seriously.

* Backward-Looking Statement: Although I have great hindsight, neither Trident Exploration or me, personally, have any expertise whatsoever to be able to advise people on how to invest. I am an exploration geologist, for goodness sake. Whatever you do, don't take any advice from me seriously.



* Backward-Looking Statement: Although I have great hindsight, neither Trident Exploration or myself have any expertise whatsoever to be able to advise people on how to invest in mining company stocks. I am an exploration geologist, for goodness sake. Whatever you do, don't take any advice from me seriously.

NEVADA'S TOP 10 PROJECTS - 2013

(If you had invested equally in each company, 11/27/12 to 12/03/13)

Gemfield	International Minerals	-43.1%
Gibellini Hill	American Vanadium	-34.3%
Goldrush	Barrick	-51.6%
Kings Valley	Western Lithium	+56.7%
Long Canyon	Newmont	-47.3%
Mt. Hope	General Moly	-65.1%
Pan	Midway Gold	-36.6%
Pumpkin Hollow	Nevada Copper	-60.2%
Spring Valley	Midway Gold	-36.6%
Wilco	Rye Patch Gold	-67.0%
TOTAL RETURN		-44.2%

NEVADA'S TOP TEN EXPLORATION PROJECTS 2014



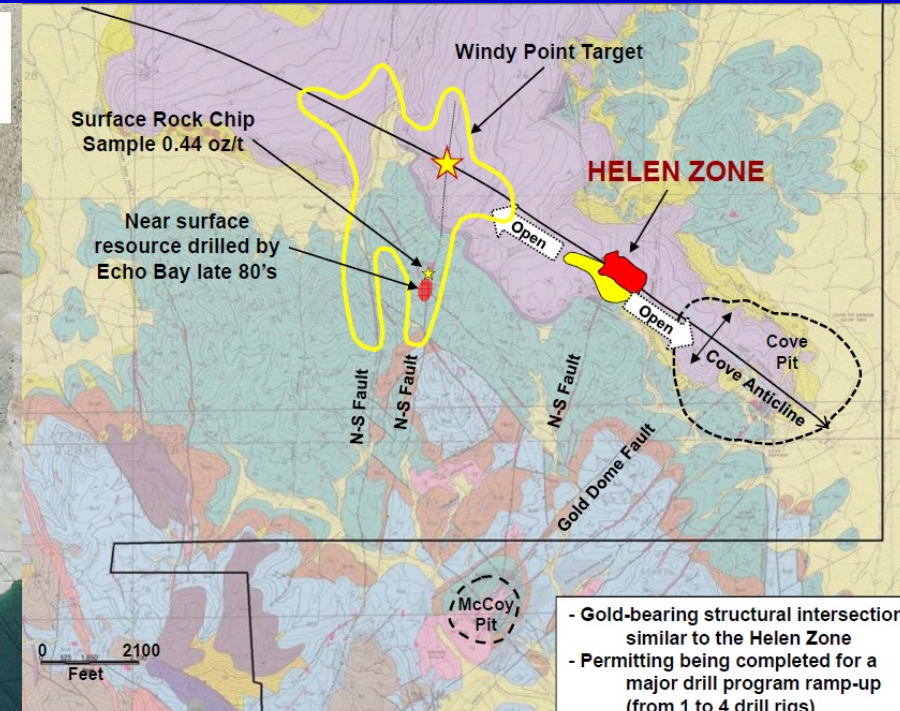
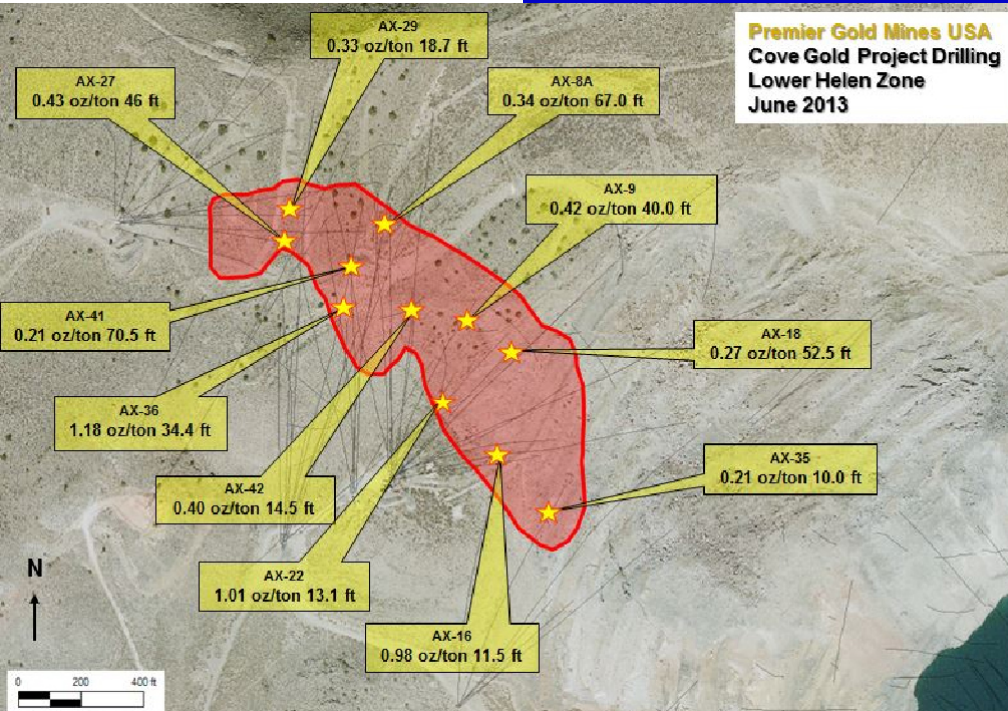


COVE - Lander Co.

Premier Gold Mines

www.premiergoldmines.com

A structurally controlled, sediment-hosted, Carlin Style gold deposit (Helen Zone) with nearby poly-metallic “feeder” structures



COVE – Premier Gold



PREMIER
Gold Mines Limited

A World Of Opportunity

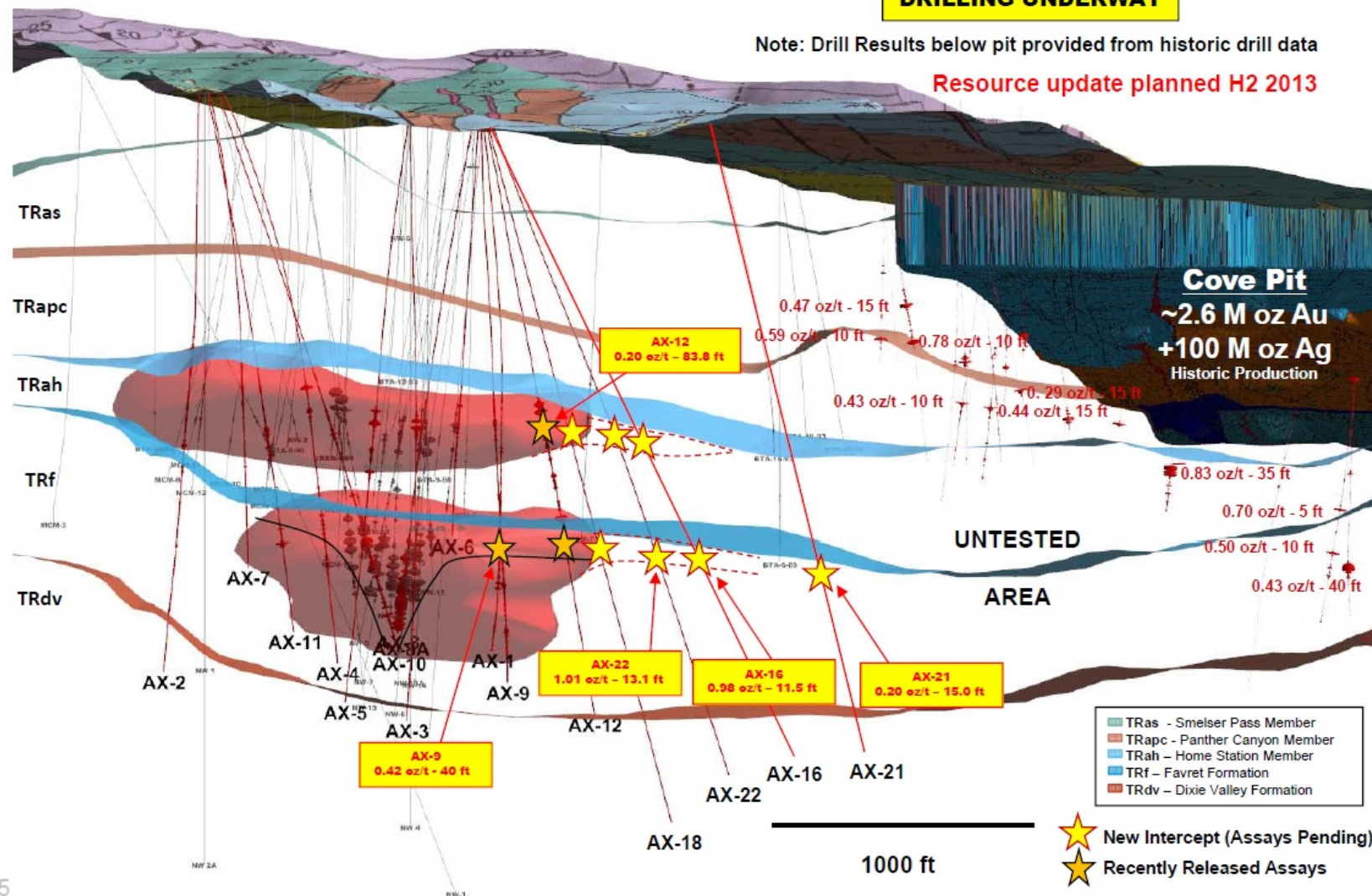
HELEN ZONE GOLD DEPOSIT

Long Section View Looking North

DRILLING UNDERWAY

Note: Drill Results below pit provided from historic drill data

Resource update planned H2 2013



COVE – *Premier Gold*

- **Located on the Eureka-Battle Mountain trend near several multi-million ounce producing and past-producing mines**
- **NI43-101 compliant mineral resource of 143,110 oz at 0.31 opt (indicated) and 278,700 oz at 0.29 opt (inferred)**
- **Helen Zone open in several directions**
- **New zone of poly-metallic mineralization (CND Zone and 2201) north of Cove pit**

GIBELLINI HILL - Eureka Co.

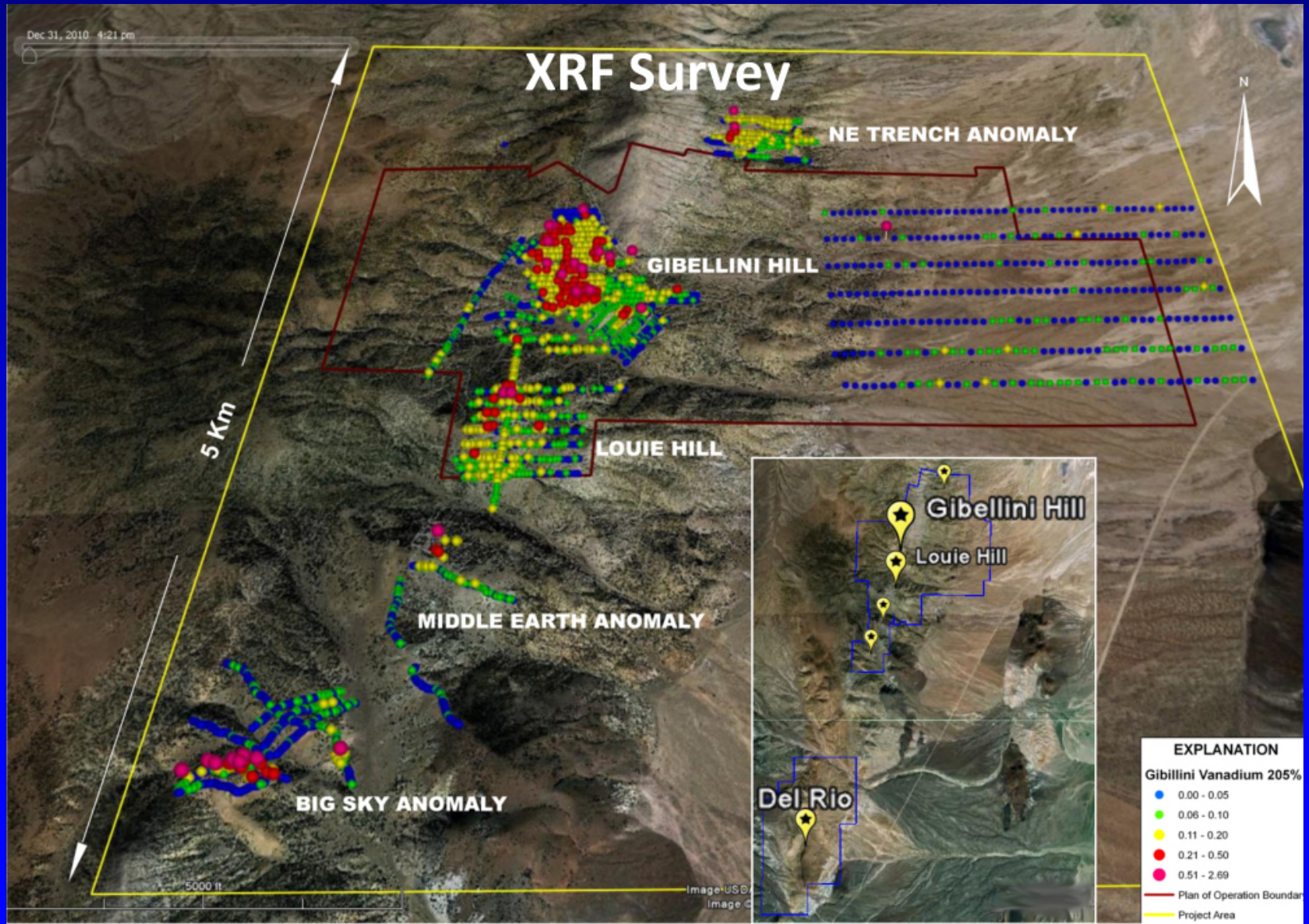
American Vanadium Corporation

www.americanvanadium.com

A variety of vanadium minerals hosted in an organic-rich siliceous black shale with an oxidation zone of up to 100 feet



GIBELLINI HILL - *American Vanadium*

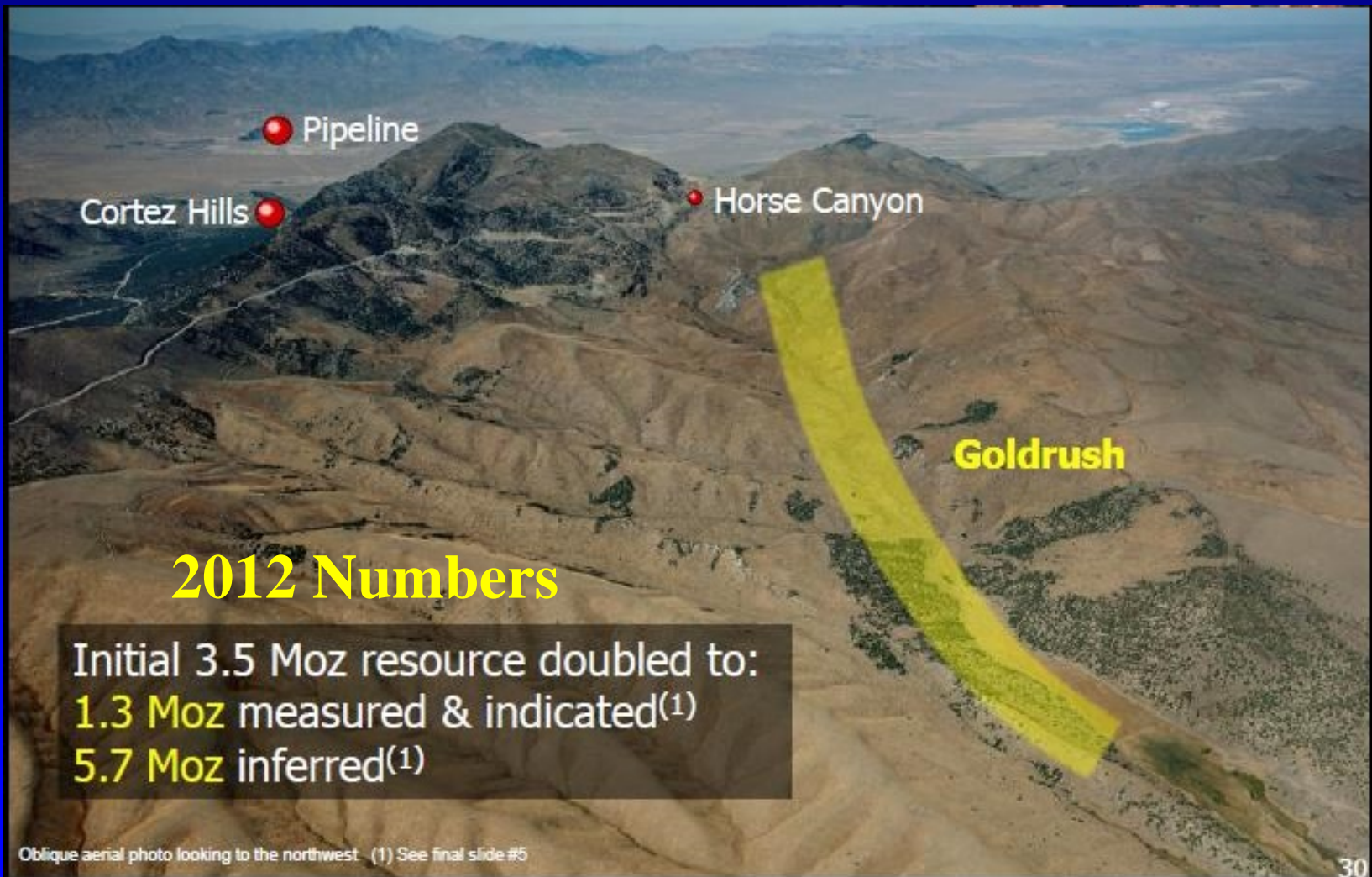


GIBELLINI HILL - *American Vanadium*

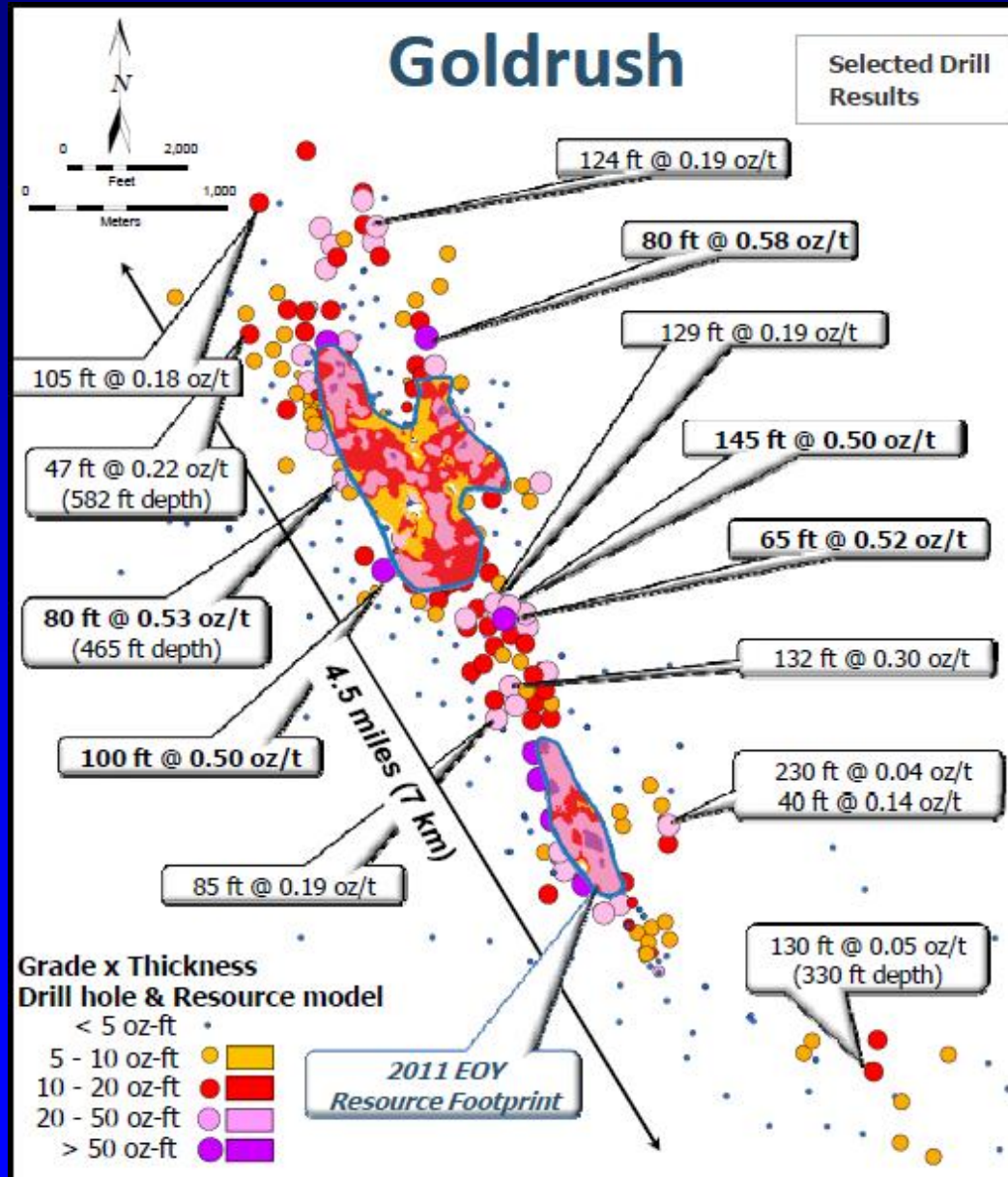
- **Potentially lowest cost primary vanadium producer in the world and could supply 5% of world's current demand for vanadium**
- **NI 43-101 compliant resource of 131 M pounds of V_2O_5 grading 0.285% (M & I) and an additional 49 M pounds of V_2O_5 (inferred) grading 0.172%**
- **Permitting and engineering for open pit/heap leach at projected 11.4 M lbs/yr V_2O_5**
- **Plan of Operations submitted to BLM in Dec 2012**

GOLDRUSH – Eureka Co.

Barrick Gold Corporation – www.barrick.com



GOLDRUSH - *Barrick Gold Corporation*



- Footprint of system almost doubled to 7 km strike
- High grade zones expanded between 2011 resource areas
- Shallow high grade west of Red Hill
- Expansion of underground-type grades to the north

GOLDRUSH - *Barrick Gold Corporation*

Goldrush / Red Hill Drill Core

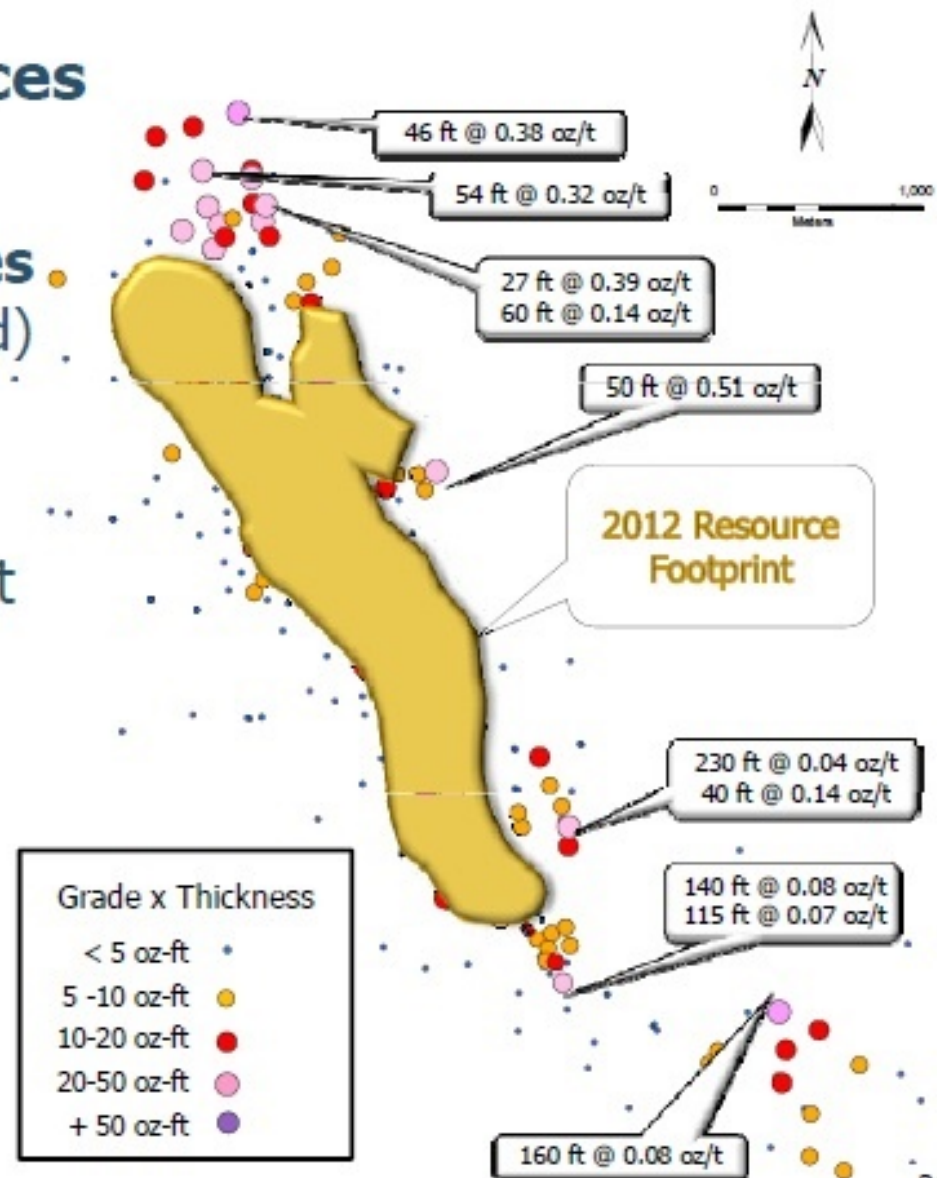


- Example of replacement-style mineralization at Goldrush
- Discovery drill hole HCD09-01 intersected 67.2 ft grading 0.89 opt
- High grade gold from KB zone at Red Hill
- Drill hole RHD08-06 intersected 194 ft grading 0.90 opt Au

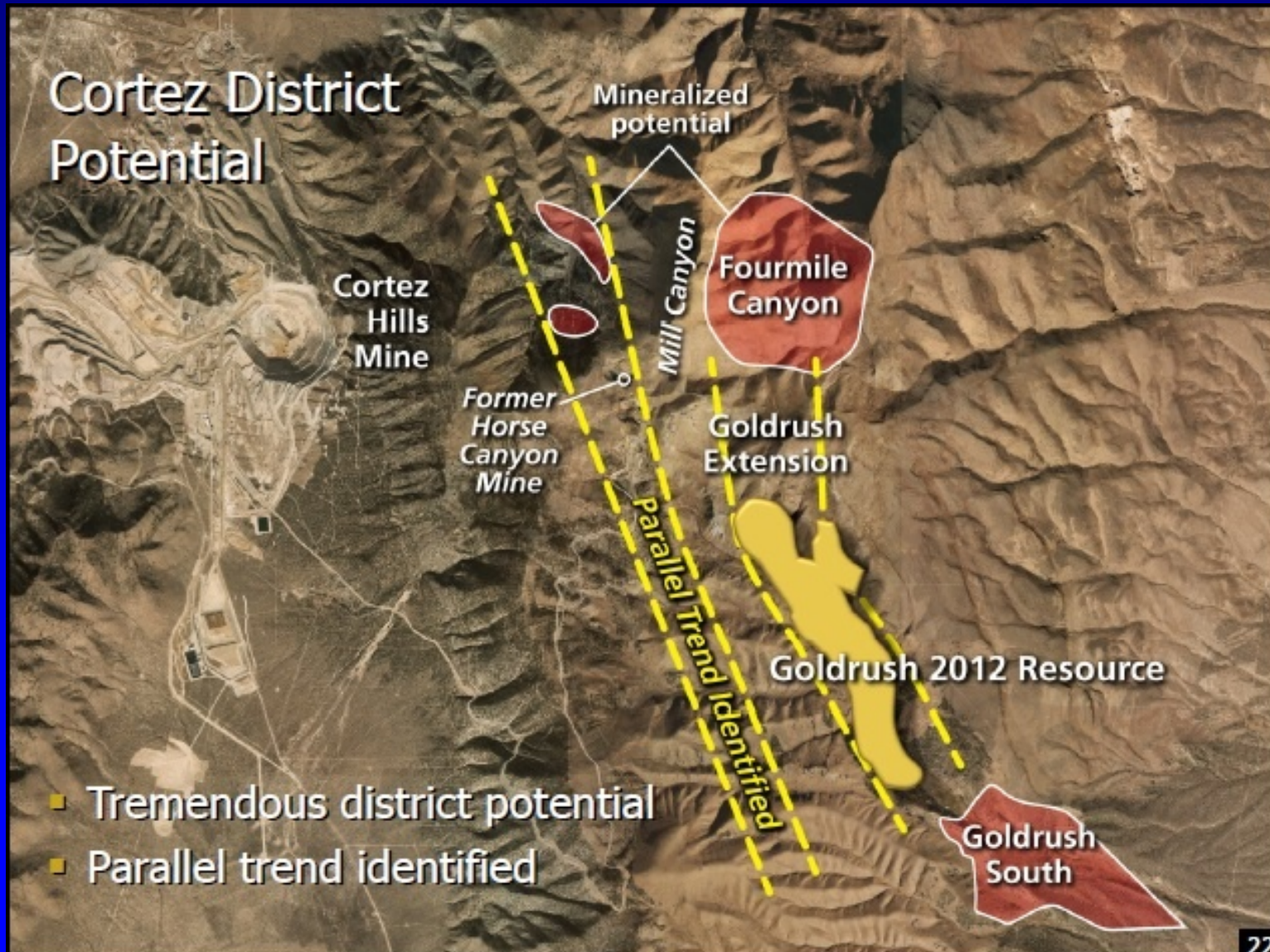
GOLDRUSH - *Barrick Gold Corporation*

Goldrush Resources

- Doubled resource to **14.1 million ounces** (8.4 M&I / 5.7 Inferred)
- Continuity between 2011 resource areas
- Multiple development options
- Potential for additional trend to the east
- Resource continues to grow



GOLDRUSH - *Barrick Gold Corporation*

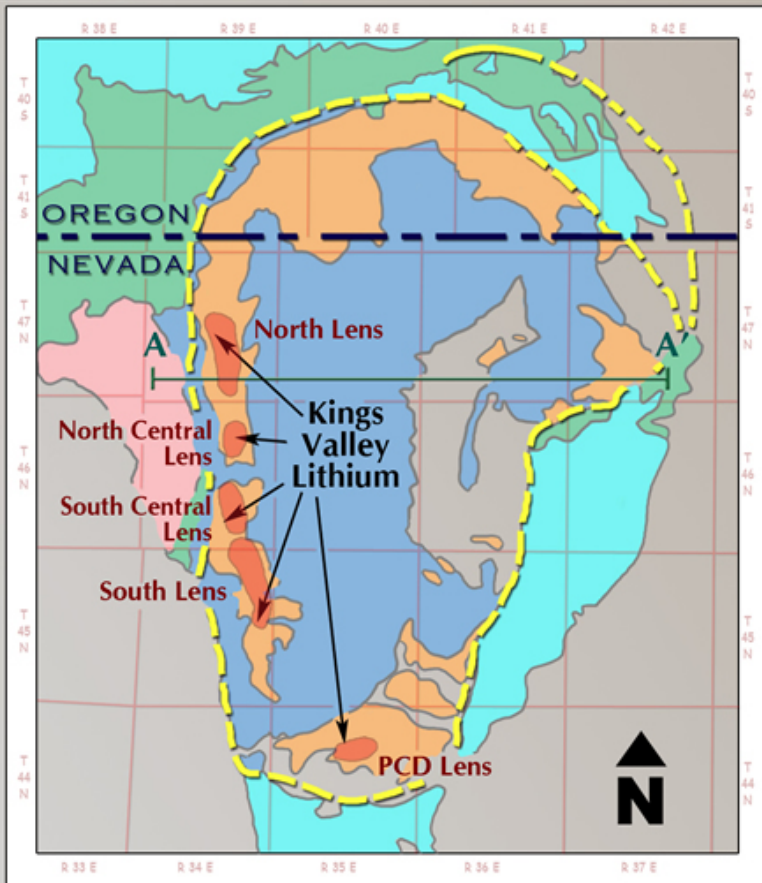


KINGS VALLEY – Humboldt Co.

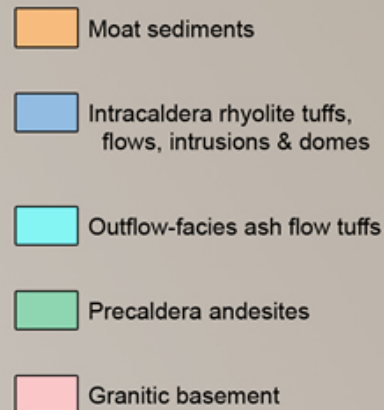
Western Lithium Corporation

www.westernlithium.com

KINGS VALLEY LITHIUM PROJECT, NEVADA

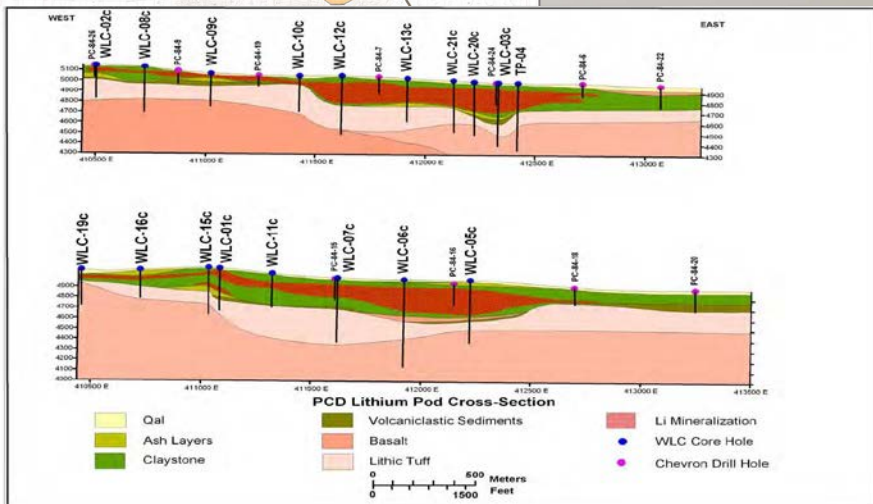
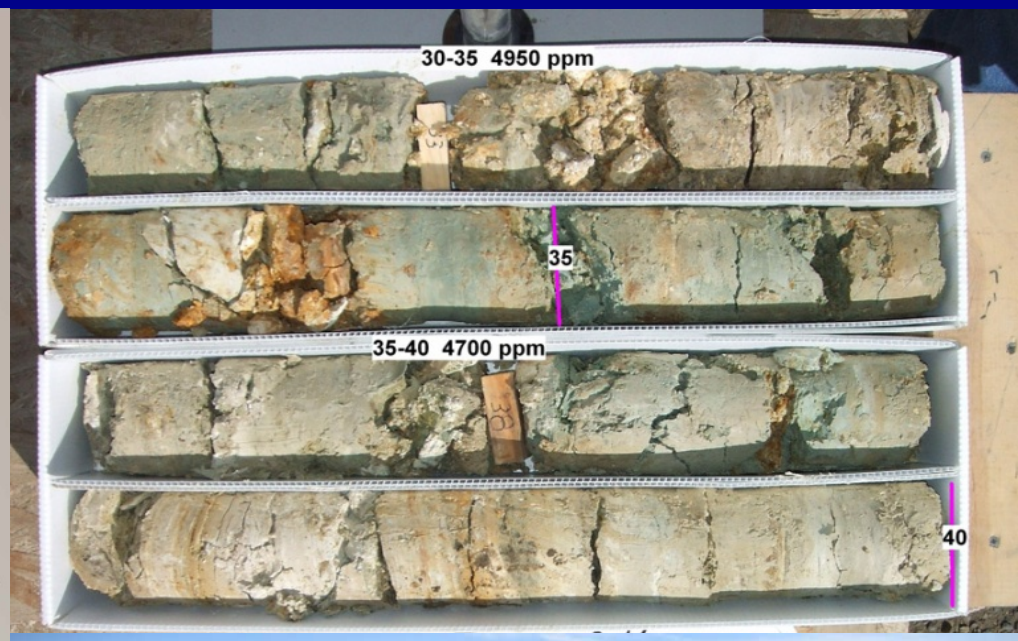
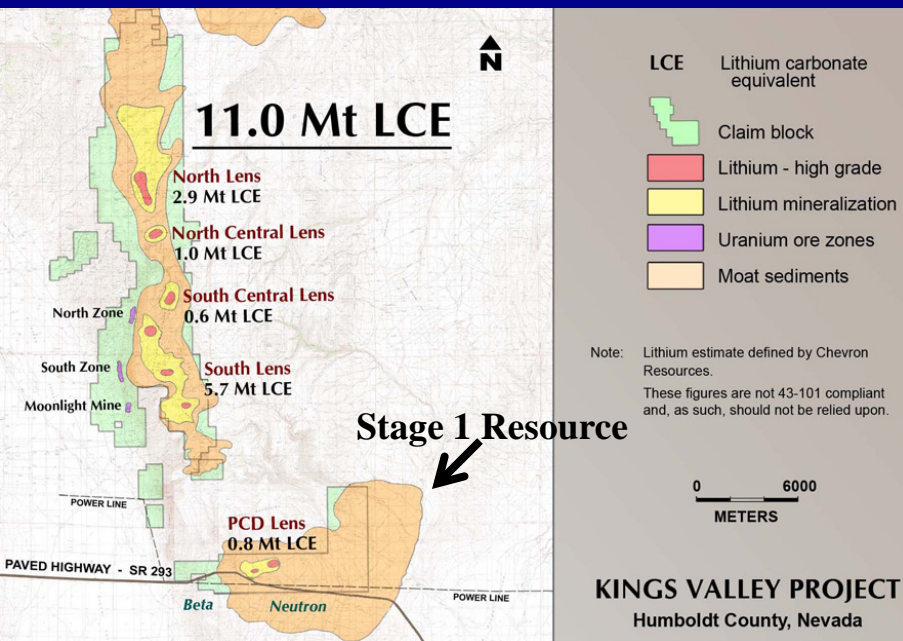


0 6 12 Miles



Lithium-enriched hectorite clay in altered volcaniclastic moat sediments of the Miocene McDermitt Caldera

KINGS VALLEY - *Western Lithium*

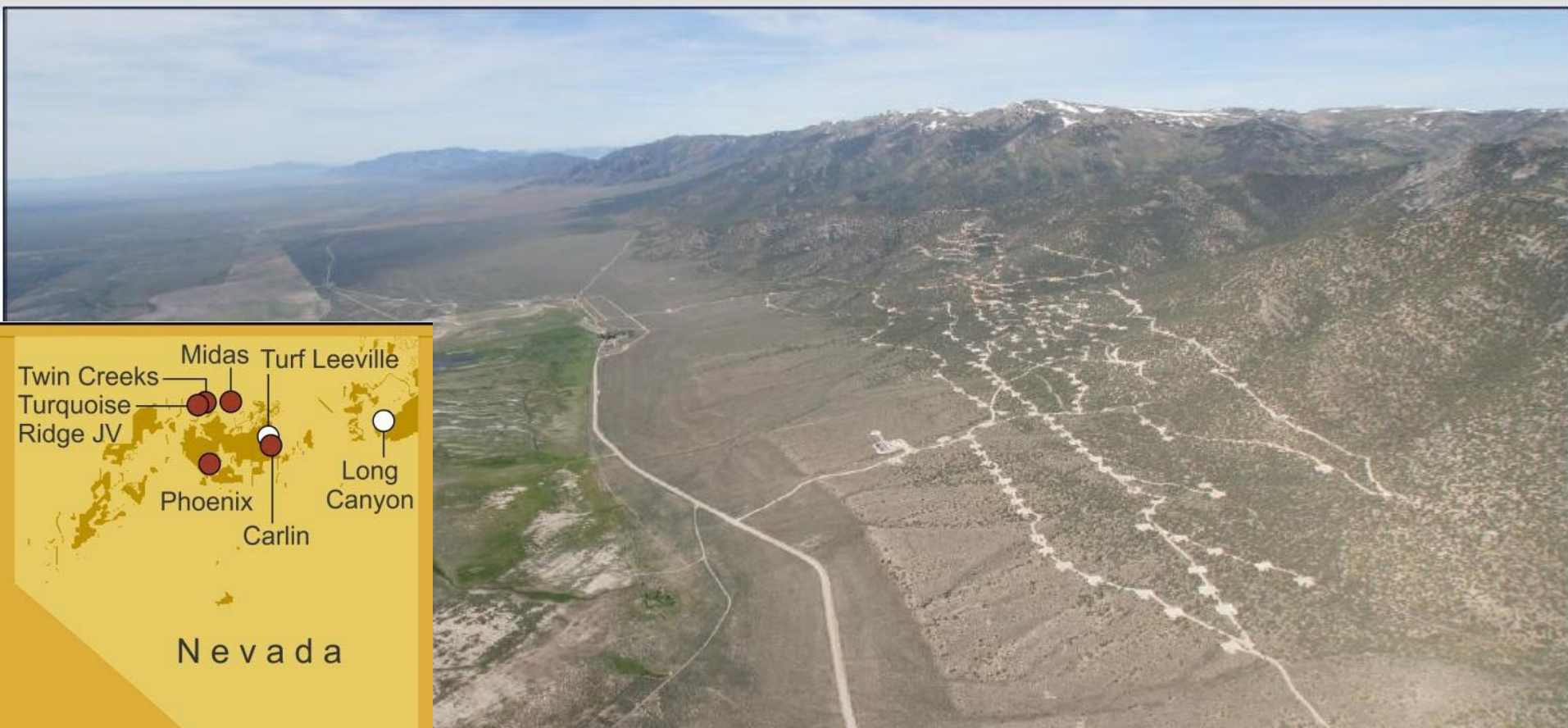


KINGS VALLEY - *Western Lithium*

- One of the world's largest known lithium deposits
- Ore Reserves proven and probable (Dec, 2011):
 - 27.1 million tonnes grading 0.395% lithium
 - Also recoverable potassium and sodium
- Capital Costs = \$409 million, 20 yr mine life
- Planned production in 2014 of 10,000 tons of hectorite based organoclay used by the oil and gas industry as a deep drilling mud additive
- Lithium demonstration plant planned in 2014

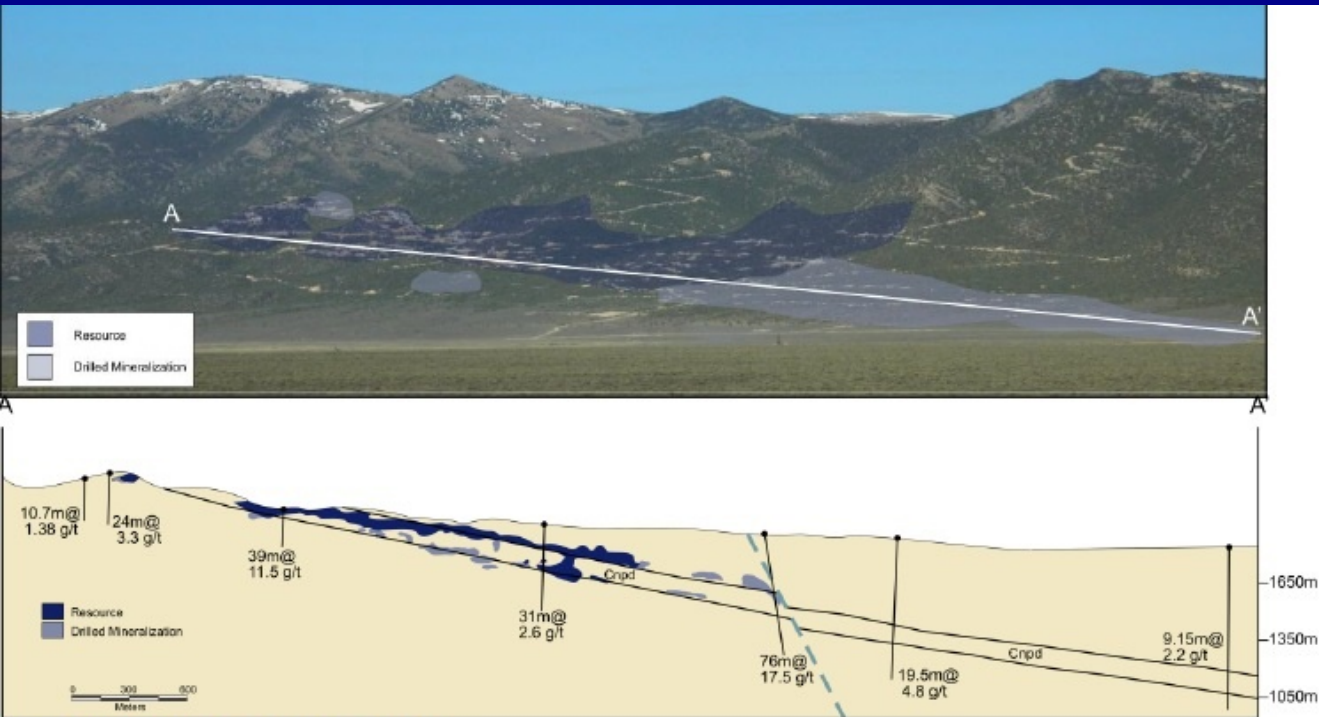
LONG CANYON – Elko Co.

Newmont Mining Corporation – www.newmont.com

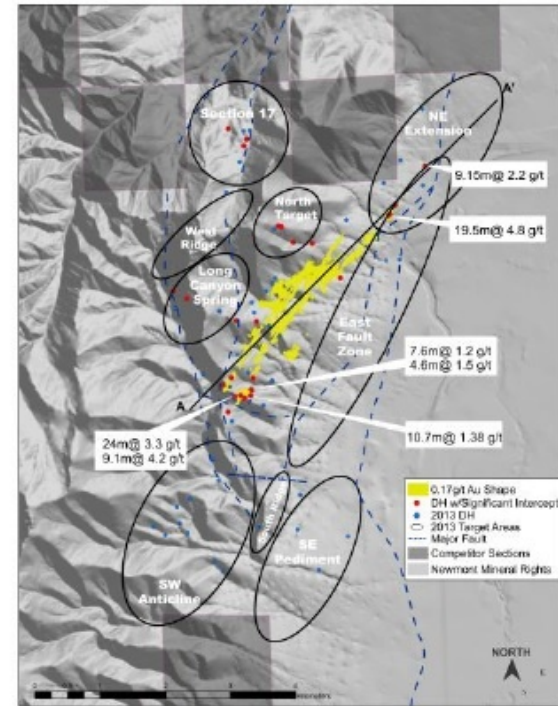


Near surface oxidized sediment-hosted Carlin-type gold deposit associated with solution breccias and stratabound horizons

LONG CANYON - *Newmont Mining*



Long Canyon strike and cross-section



2013 Long Canyon exploration and project scope

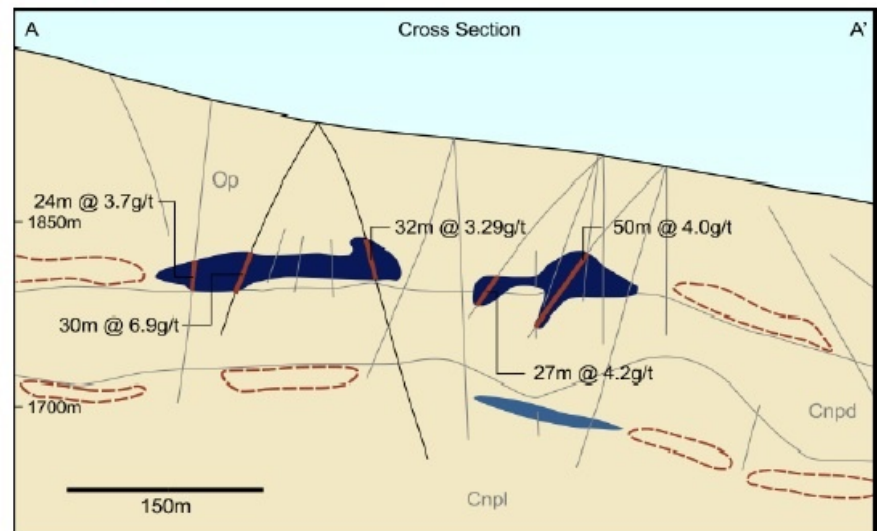
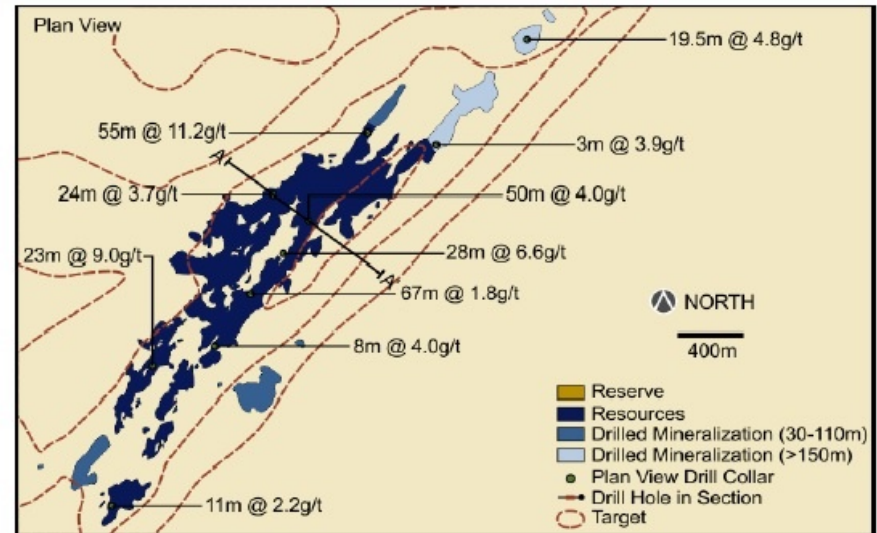
- Plan of Operations to the BLM in support of the draft EIS
- First reserve declaration anticipated with 2013 fiscal results

LONG CANYON - *Newmont Mining*



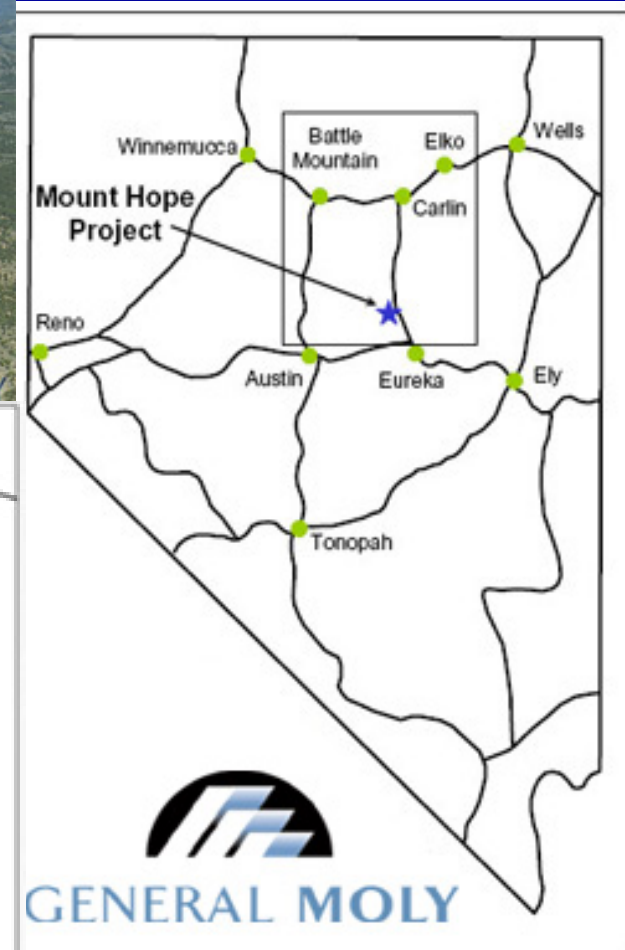
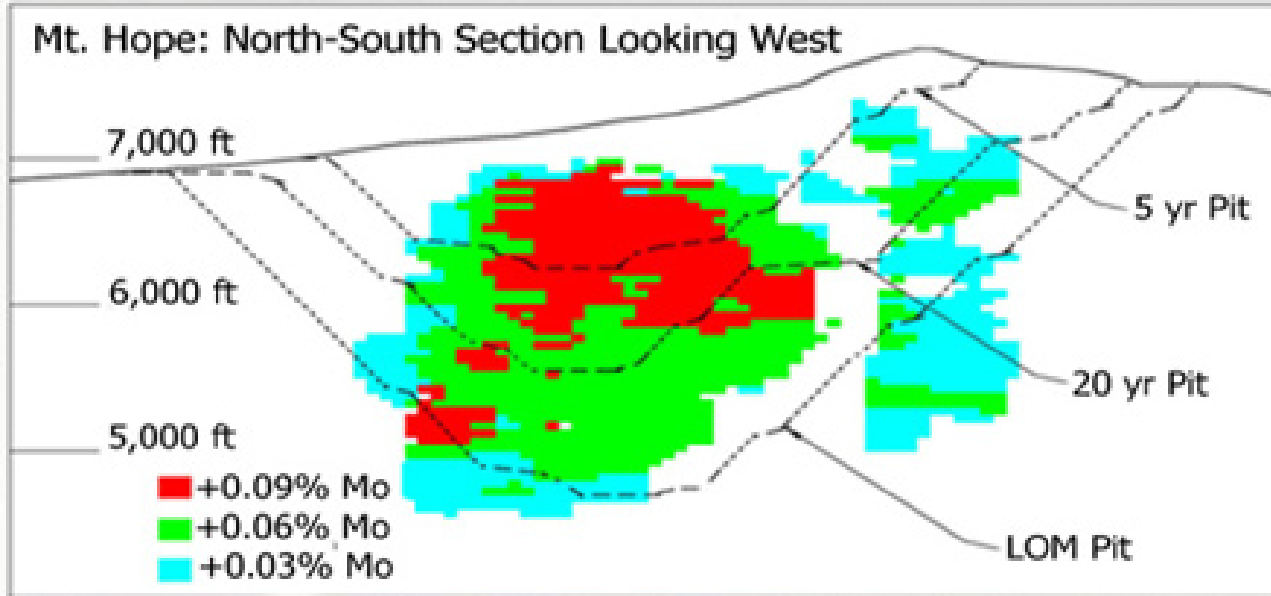
2012 & 2013 Highlights

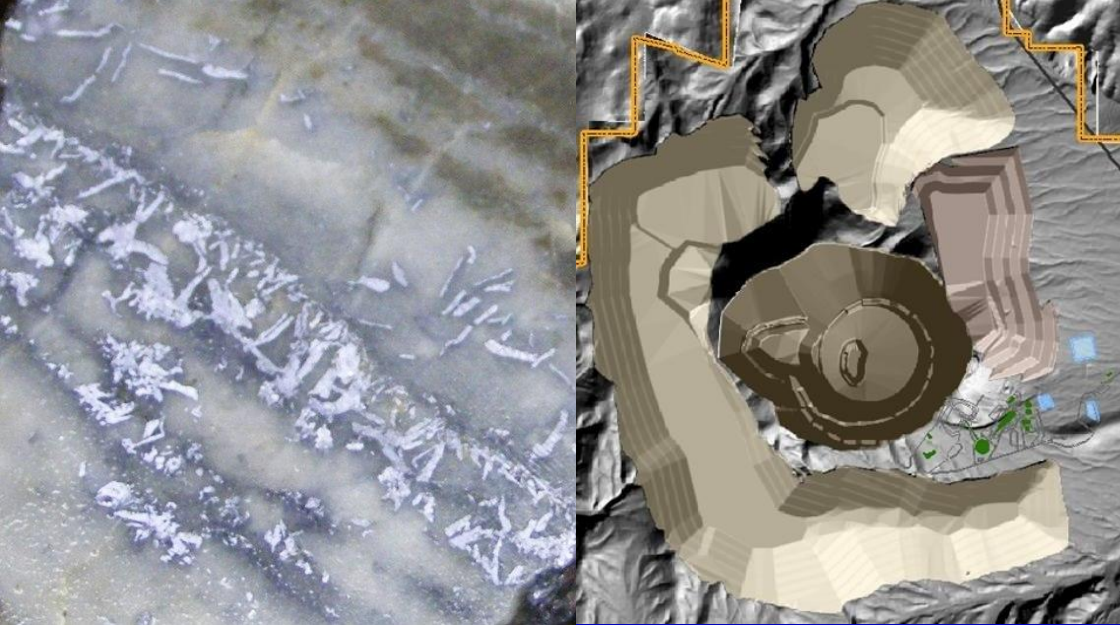
- 2.6Moz inferred resource declared with trend potential of >3-4x Fronteer's original estimates⁷
- ~65,000 meters of drilling planned for 2013¹⁰
- Selection and confirmation study underway
- Draft EIS to be completed late 2013



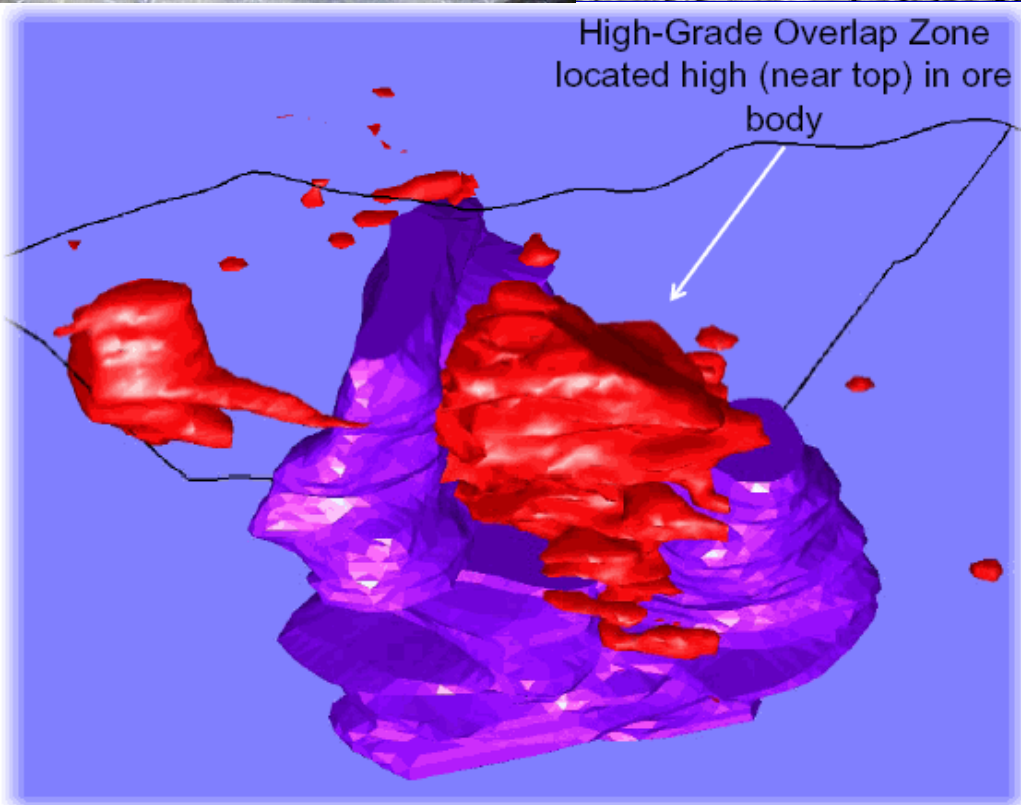
MT. HOPE - Eureka Co.

General Moly - www.generalmoly.com





MT. HOPE - *General Moly*

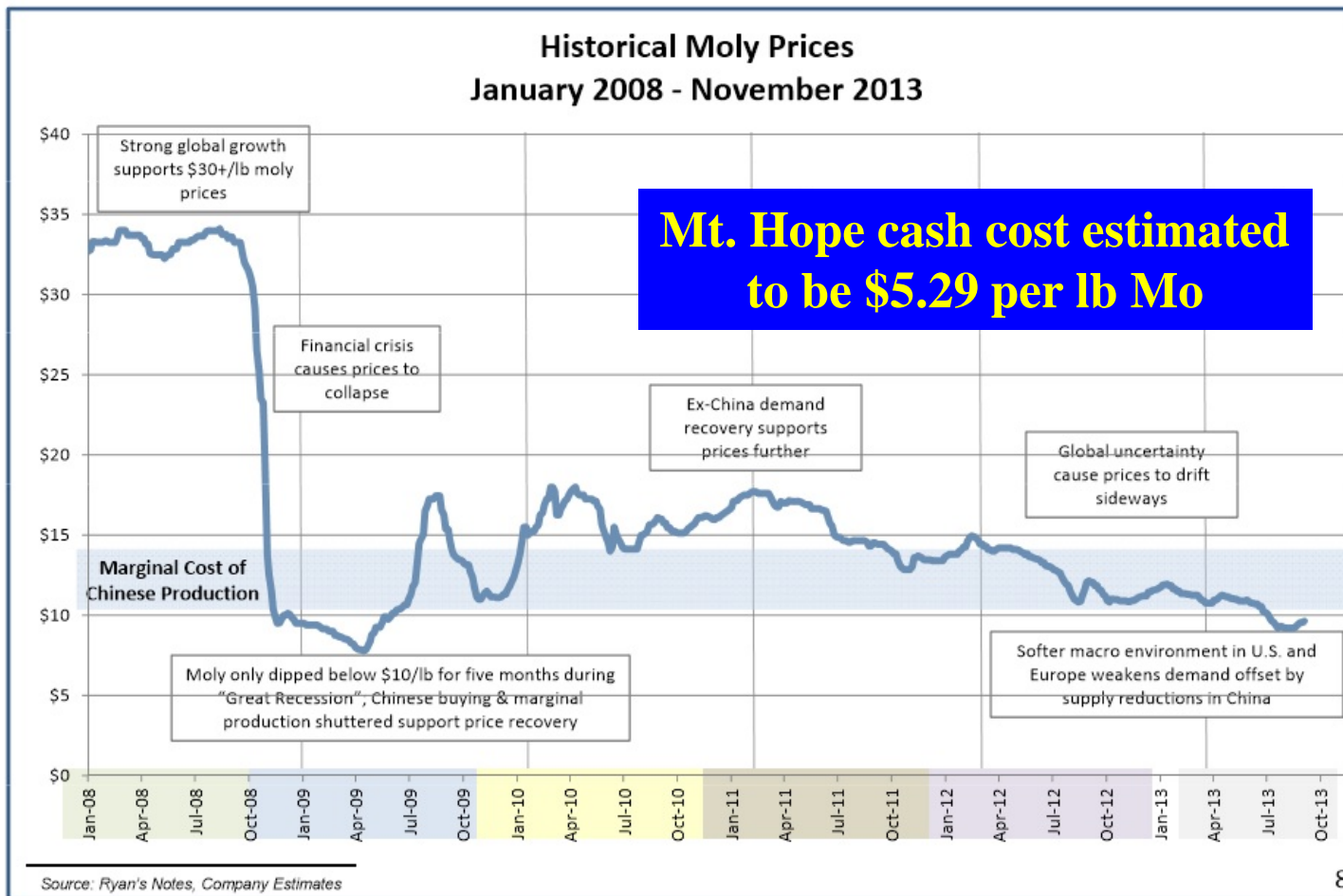


**Classic molybdenum
porphyry with two dome
shaped shells of quartz
porphyry weakly to
densely veined by quartz
stockworks containing
molybdenite**

MT. HOPE - *General Moly*



Industry Marginal Cost Limits Price Downside

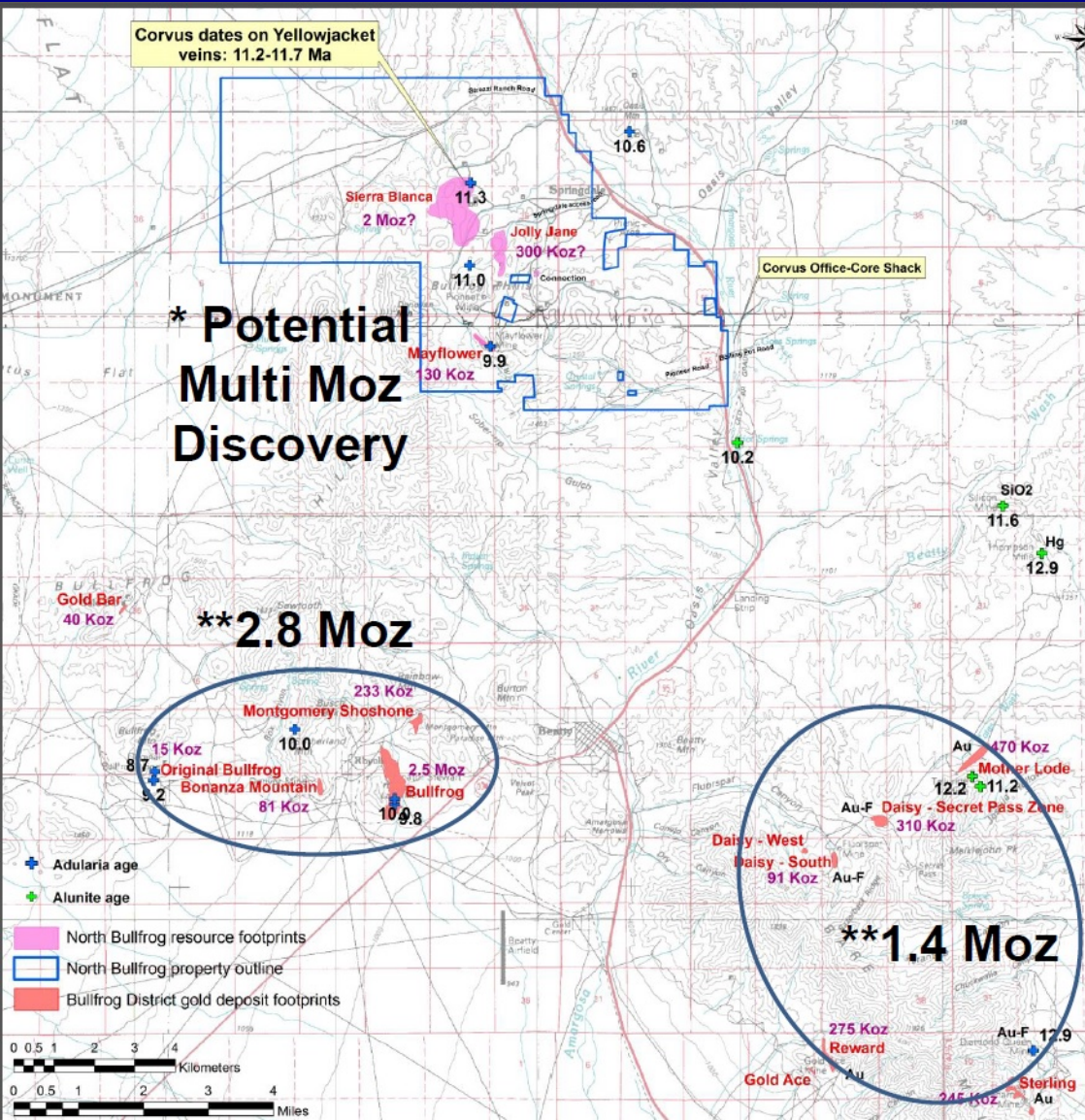


MT. HOPE - *General Moly*

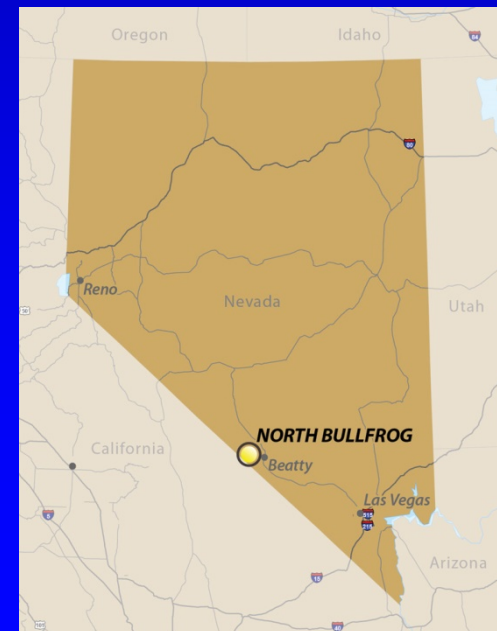
- Plan of Operations approved 11/12
- Reserves of 1.3 B lbs Mo (proven and probable)
- 40 M lbs Mo/yr @ 0.103% Mo (first 5 yrs)
- Capital cost estimate \$1.27 B, 44 yr mine life
- \$260 M spent on permitting and equipment
- Off-take and financing agreements with partners: Hanlong (China), APERAM formerly ArcelorMittal (India), POSCO (S. Korea), SeAH Besteel (S. Korea), and Sojitz (Japan)
- Hanlong's Liu Han “detained”, financing (?)

NORTH BULLFROG – Nye Co.

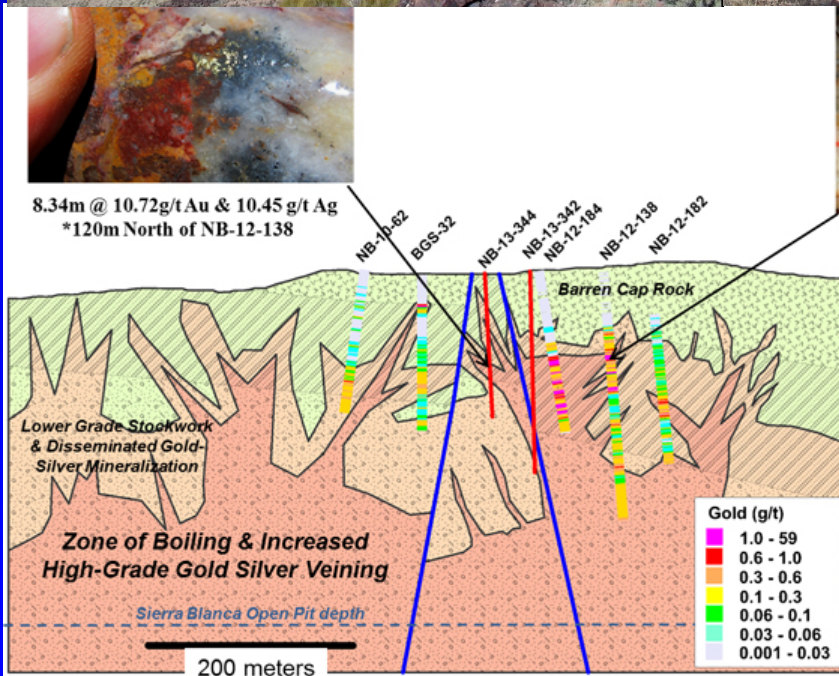
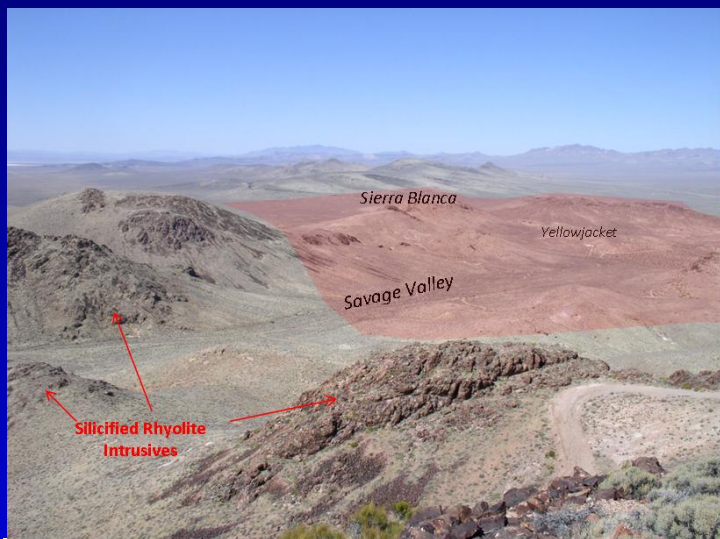
Corvus Gold - www.corvusgold.com



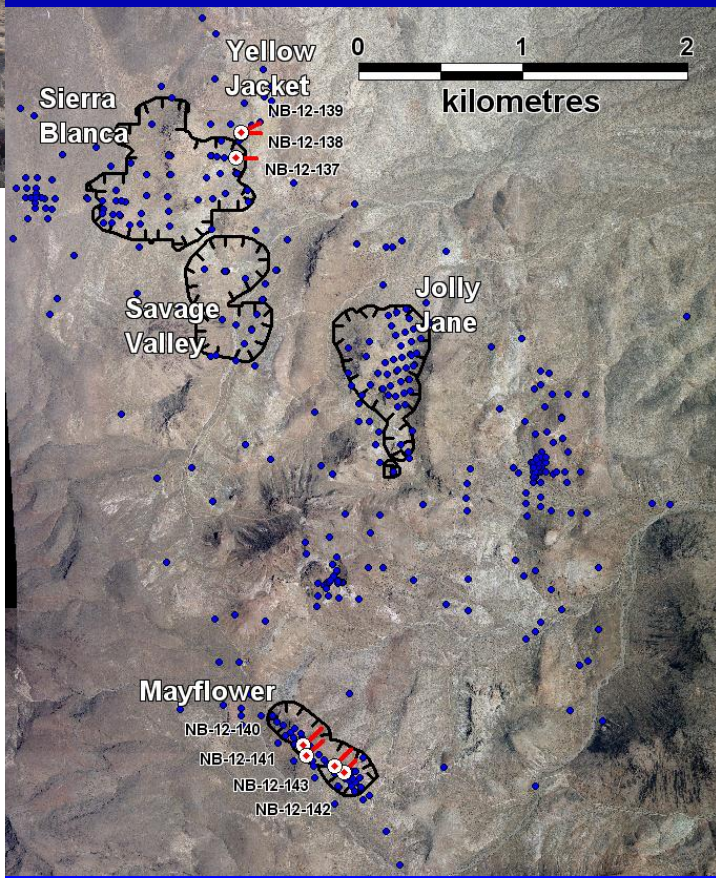
Large, low-sulfidation, epithermal bulk-tonnage gold system hosted in volcanic and sedimentary rocks



NORTH BULLFROG - *Corvus Gold*



Yellow Jacket high-grade quartz vein
(20 g/t Au & 1519 g/t Ag over 4.3m)



NORTH BULLFROG - *Corvus Gold*

- Includes eight prospective gold targets
- 2013 PEA projects four pits contain a resource of 1,067,400 oz Au (852,700 recoverable) at 0.219 gpt (23% indicated and 77% inferred)
- 76,500 oz/yr of Au and 30,000 oz/yr Ag
- Heap leach system with 80% Au recovery
- Initial capex of \$101 M, cash cost of \$778/Au oz
- Drilling northeast of the proposed Sierra Blanca pit in 2012 discovered a high-grade feeder system called the Yellowjacket Zone

PAN – White Pine Co.

Midway Gold - www.midwaygold.com

PAN – RESOURCE EXPANSION POTENTIAL



GEOLOGY OVERVIEW

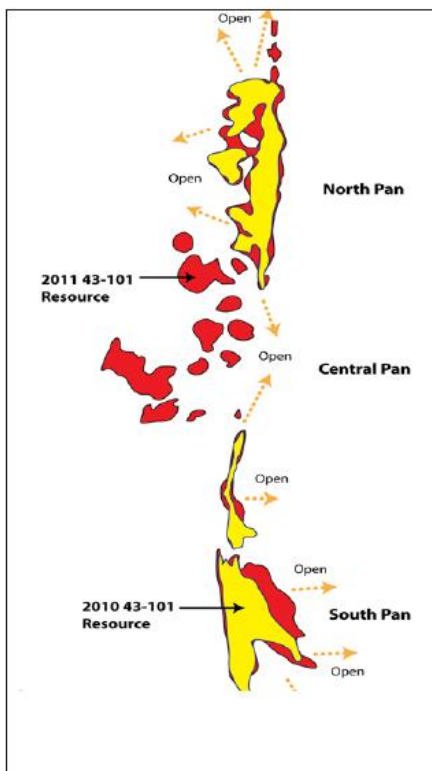
- Sediment hosted Carlin-style gold system
- Gold hosted in solution breccia
- Large scale: 3,700m long x 300m wide

NUMEROUS UNTESTED TARGETS

- Open to North
 - Favorable host rocks & structure
- Open to South East
 - 2011 drilling confirmed Wendy zone extension
 - Barite zone untested by drilling
- Open to depth
 - 20% of historic drilling ended in mineralization
 - Shallow Central Pan untested
- Untested cross structures
 - Potential to connect North & South Pan

OVERVIEW OF PAN RESOURCE GROWTH

- 2010 43-101 Resource
 - 1978-2010 drilling
 - 879 holes
 - 73,623m
- 2011 43-101 Resource
 - 2011 drilling
 - 33 holes
 - 8,456m

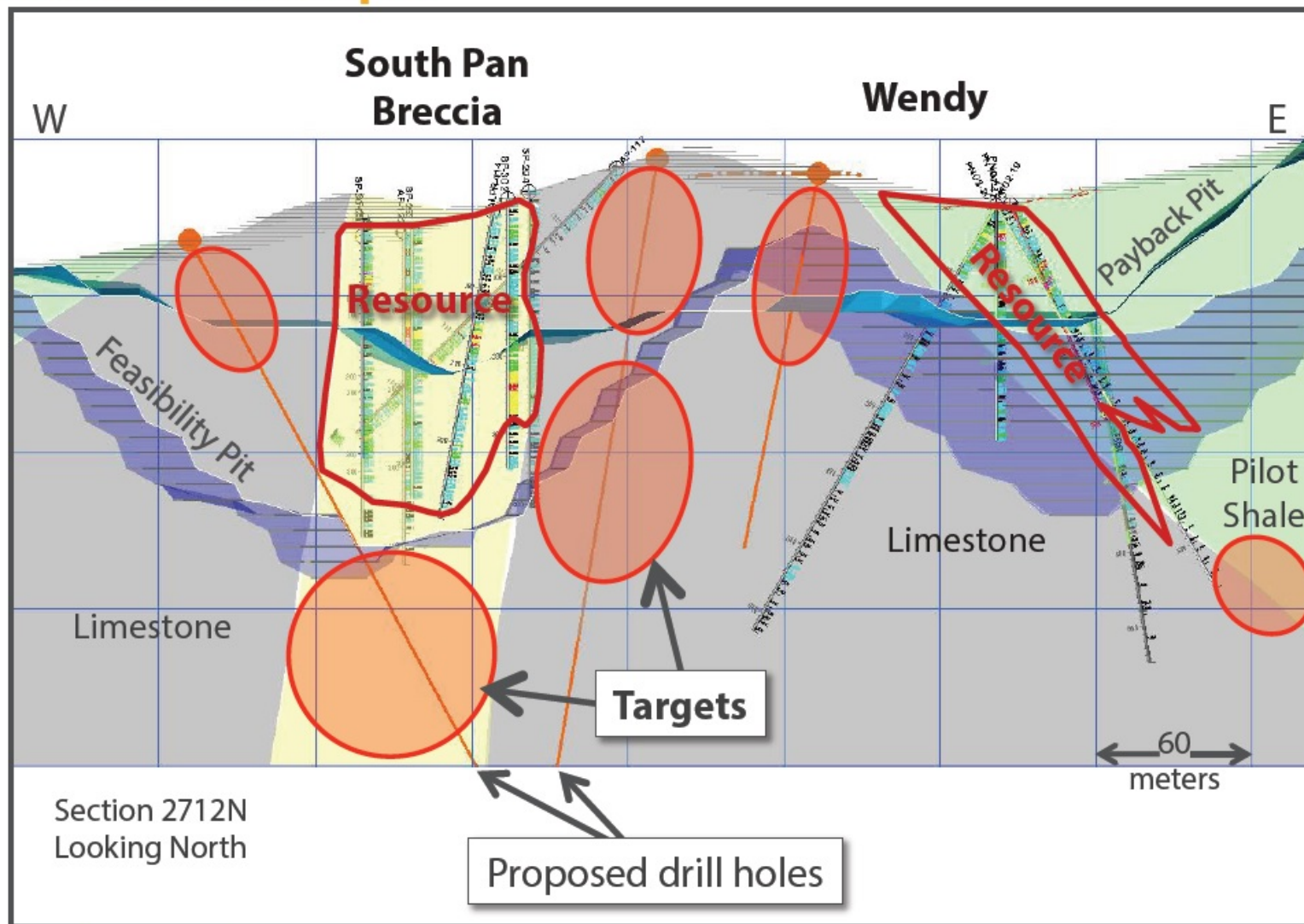


**Oxidized
sediment
hosted Carlin-
style gold
system**



PAN - Midway Gold

South Pan Example

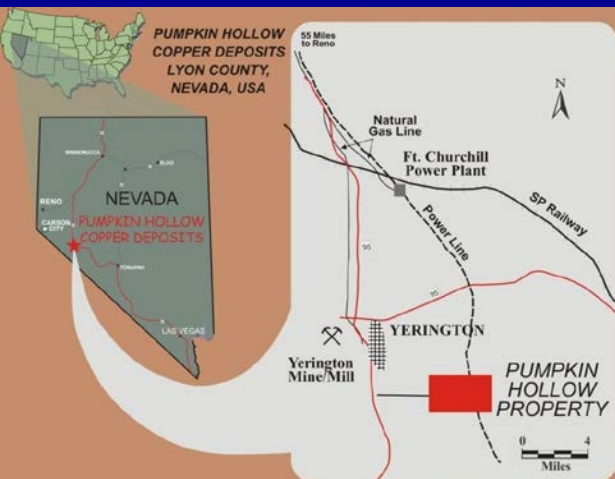


PAN - *Midway Gold*

- **Midway's first project**
- **P&P reserve of 864,000 oz Au at 0.56 g/t**
- **Simple low cost project with capex of \$99M**
- **Open pit/heap leach with low strip ratio (1.8:1)**
- **Mine life of 9 years, annual production 81,000 oz**
- **Cash cost of \$585/oz, fully loaded cost of \$824/oz**
- **Final EIS completed 11/13, ROD expected 12/13, construction and production expected in 2014**
- **Numerous untested targets on property**

PUMPKIN HOLLOW - Lyon Co.

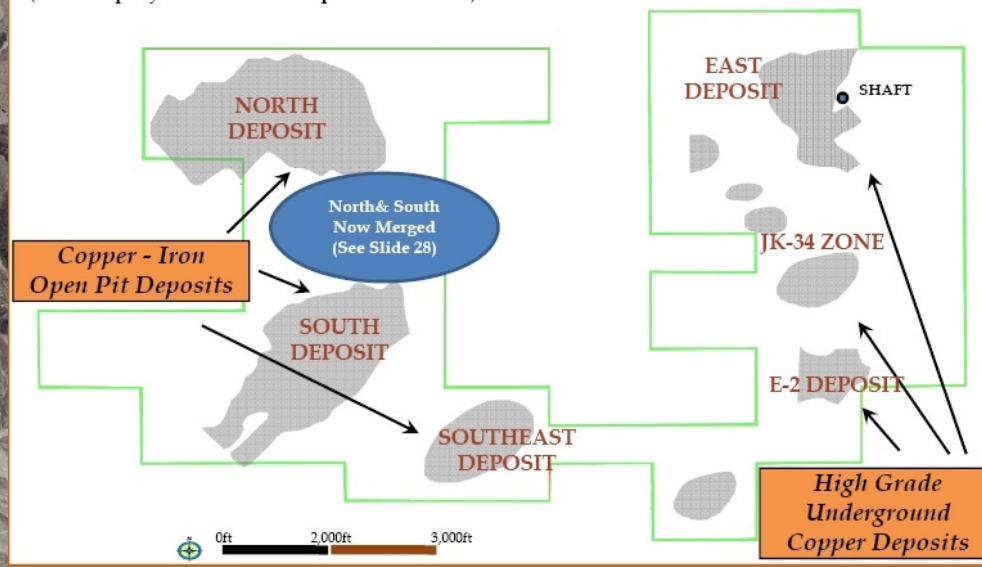
Nevada Copper - www.nevadacopper.com



High grade
copper/magnetite skarn
associated with a copper
porphyry system



Outline of Patented Claims
(Note: Property extends off the map in all directions)



PUMPKIN HOLLOW Nevada Copper

Mineral Reserves (P & P)

5.22 billion lbs of Cu

989,215 oz of Au

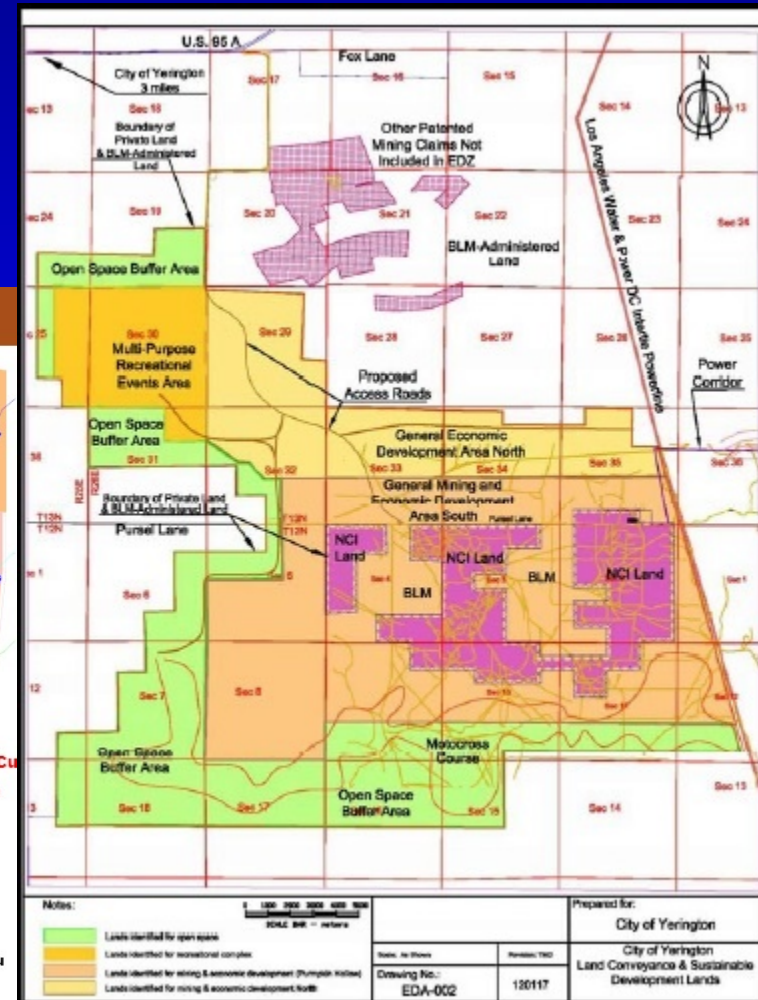
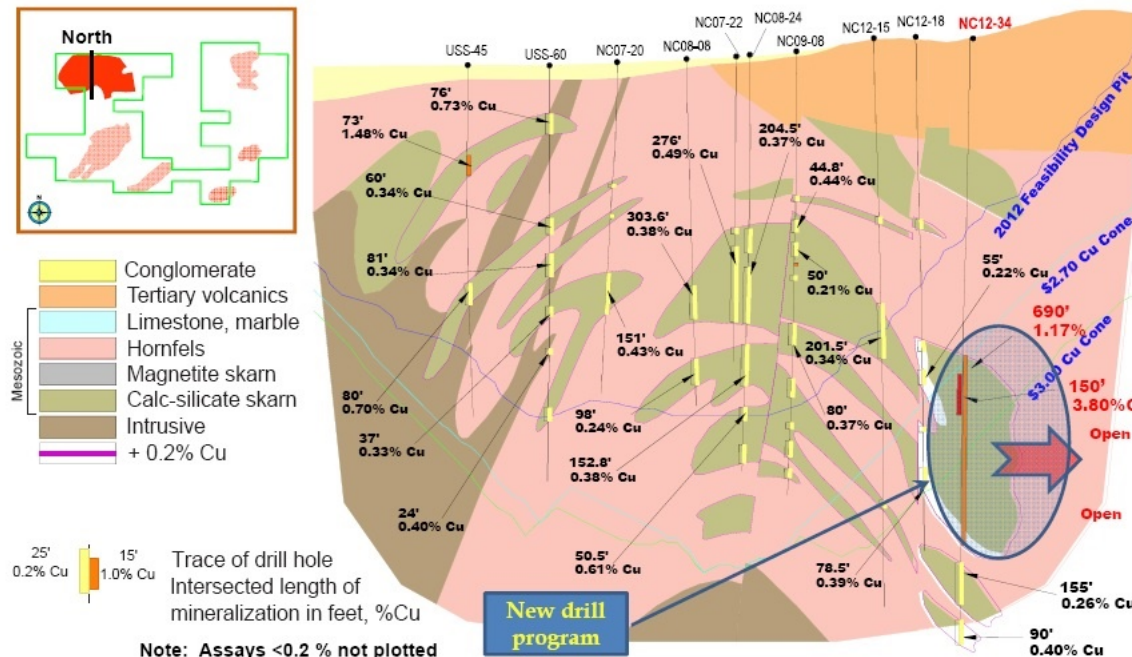
32.9 million oz of Ag

Iron Resource (M & I)

127 million tons Fe

Land Purchase and Conveyance
10,300 acres of public land (BLM)

North Section 48700 E



PUMPKIN HOLLOW - *Nevada Copper*

- **OP and UG operation - capital cost of \$1.26 B**
- **70,000 tpd open pit and 6,500 tpd underground feeding a single 70,000 tpd concentrator**
- **UG mine life of 12 years with Cu 74.6 M lbs/yr**
- **OP mine life of 22 years with Cu 221 M lbs/yr**
- **UG operation permitted, 2,140 feet production shaft to be completed in 2014, production in 2015**
- **Open pit operation permits in 2014, pending passage of Land Bill**

SPRING VALLEY - Pershing Co

Midway Gold (JV with Barrick)

www.midwaygold.com

www.barrick.com

Porphyry/diatreme hosted gold system with significant amounts of coarse native gold



Other Spring Valley Targets:



1 - Golden Gate
2 - Limerick - Hagen
3 - Gold Mtn

4 - Spring Valley Pass
5 - King David
6 - Dry Gulch

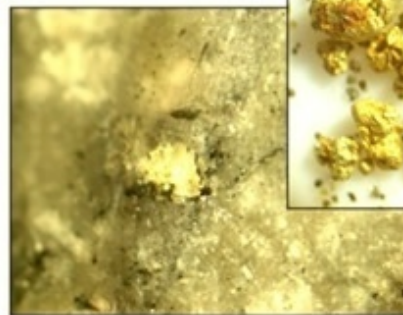
7 - New Pipe
8 - Fitting
9 - North Ridge

10 - North JL
11 - American Canyon
12 - Spring Valley West



SV05-88
24 1mm gold grains in pan concentrate
from a 5 foot run of RC drilling:
Minimum grade = 3.4 g/t

SV05-74
Gold in RC cuttings



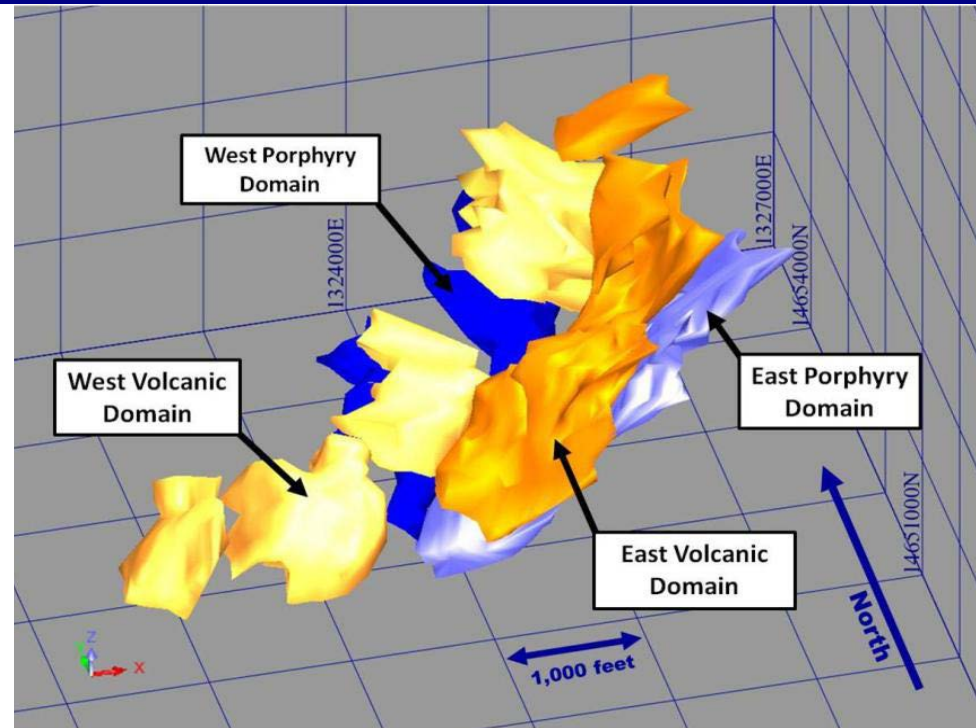
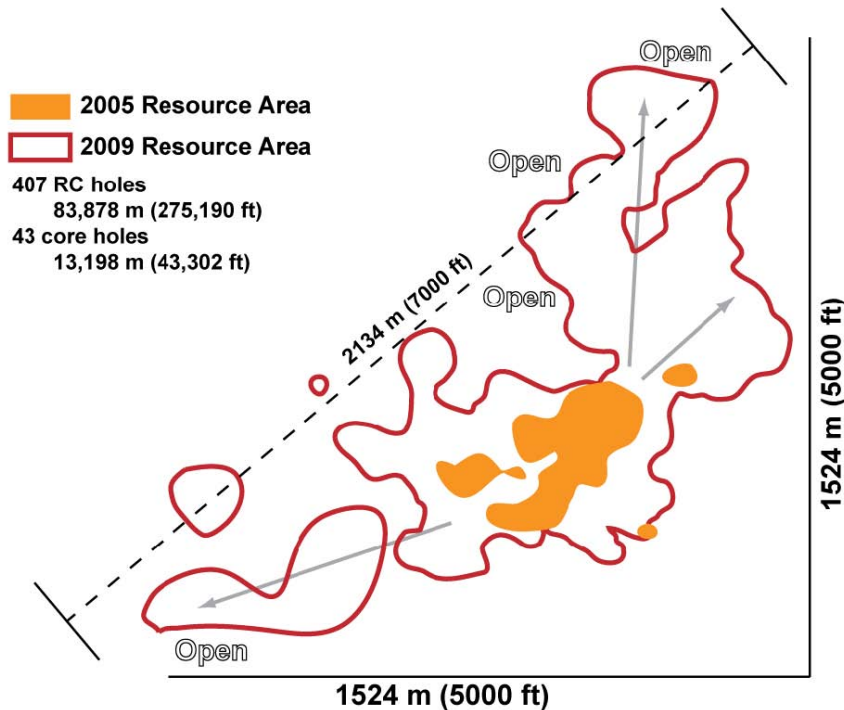
SV05-67c
Gold in 2mm wide quartz vein



SV05-68c
Gold in 15 cm wide quartz vein

**Spring Valley
Coarse Gold**

SPRING VALLEY - *Midway Gold / Barrick*



- 2011 resource estimate: 2.16 M oz gold (M & I) at 0.46 gpt and an additional 1.97 M oz gold (inferred) at 0.59 gpt
- Barrick has spent \$38 M for 70% as of November, 2013
- Midway can retain 30% and fund or be carried at 25%

SPRING VALLEY - *Midway Gold / Barrick*

Infrastructure is Always Important

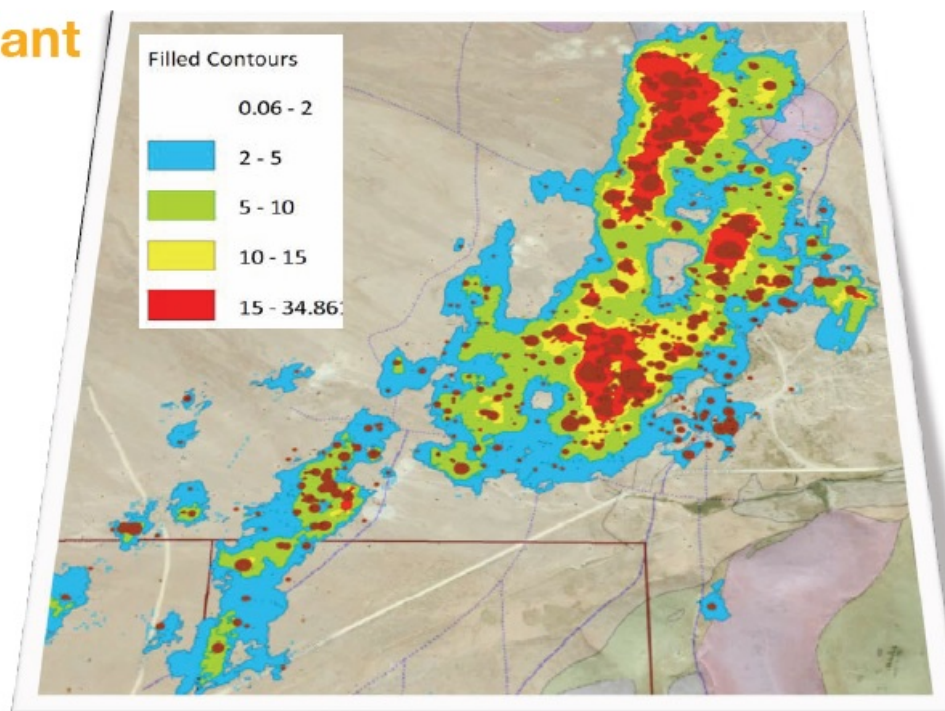
Barrick is the Operator

- Upgraded to Development Team – 2012
- Expect Internal Scoping Study – 2013

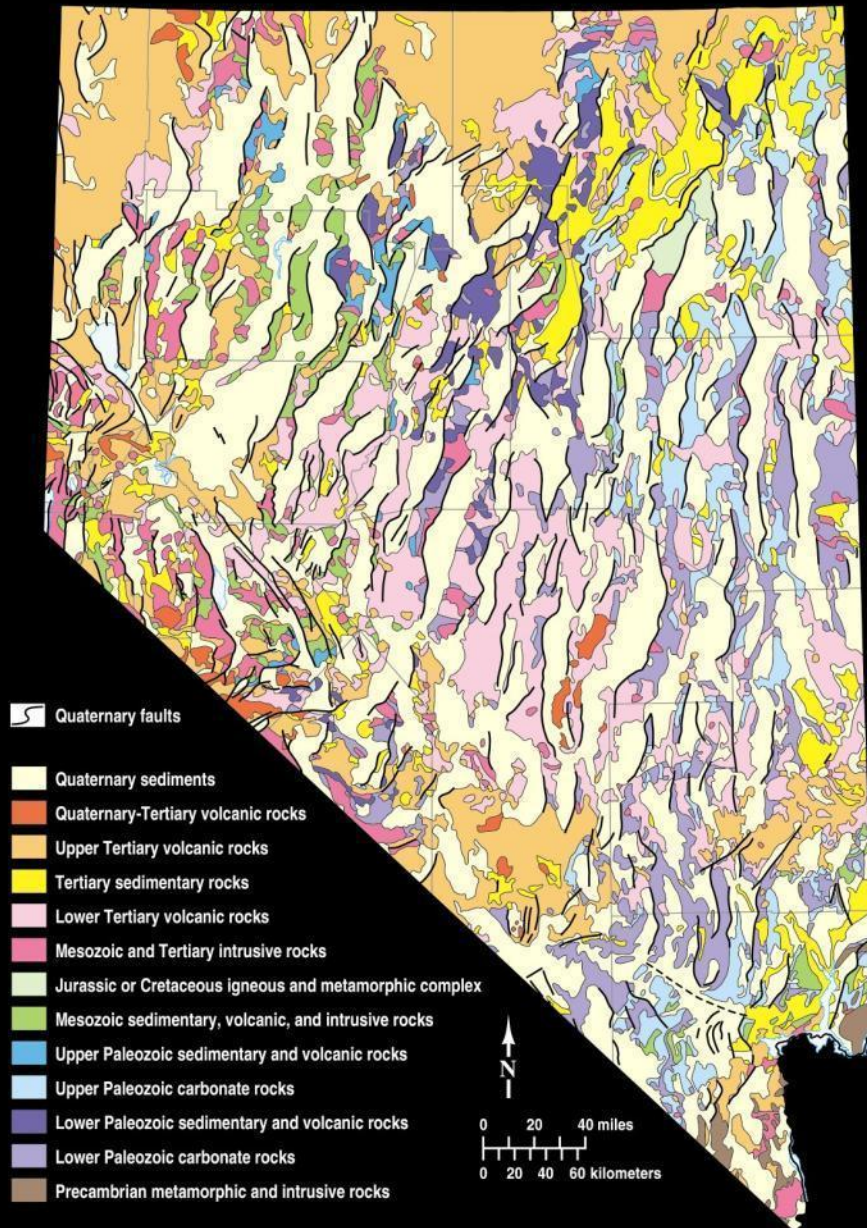
- ⊕ Nearby community
- ⊕ Paved road to site
- ⊕ Power line on site
- ⊕ Nearby interstate highway
- ⊕ Known mining area

Great resource potential

- Gold Deposit 2 km Long x 0.5 km Wide
- Open for Growth in Several Directions
- Active Drilling to Improve Quality of Resource
- Good Recoveries in Gravity & Column Leach Tests



Spring Valley Q2 2013
Gold grade x Thickness



Generalized Geologic Map of Nevada

Ten Top Reasons to Explore in Nevada

1. Great geology and mineral potential
2. Many large producing mines, including high-grade, underground mines
3. Mines operated by leading international companies

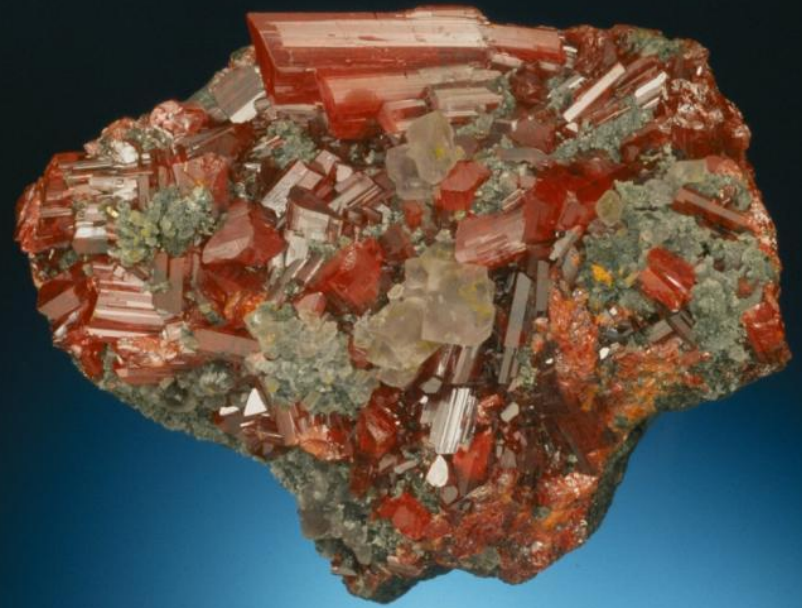


4. Regulatory system with recent examples of rapid permitting

5. Good infrastructure (roads, drillers, hotels supplies, assayers, etc.)

6. Large areas of public land open to exploration

7. Dry climate and year round access



8. Network of knowledgeable exploration geologists, organizations, and agencies

(Geological Society of Nevada, Nevada Mining Association, Nevada Mineral Exploration Coalition, Nevada Division of Minerals, Nevada Bureau of Mines & Geology, Ralph Roberts Center for Research in Economic Geology, and other units of the Mackay School of Earth Sciences and Engineering)

9. Recent discoveries and new mines

Ten Top Reasons to Explore in Nevada (continued)

10. No malaria,
black flies, moose,
polar bears, desert
death adders, or
crocodiles;
just elephants!



THE MAIN POINT

10 Year Gold

High 1900.30 Low 374.40



Nevada continues to be a really great place to explore for and mine gold - and many other mineral commodities.

www.kitco.com

Based on New York Close



Nevada is a major natural resource producer and has significant mineral and energy resources that can provide strong economic development into the future.

