

Nevada Bureau of Mines and Geology
SPECIAL PUBLICATION P-27

Major Mines of Nevada 2015

Mineral Industries in Nevada's Economy

By Rich Perry and Mike Visher
The Nevada Division of Minerals

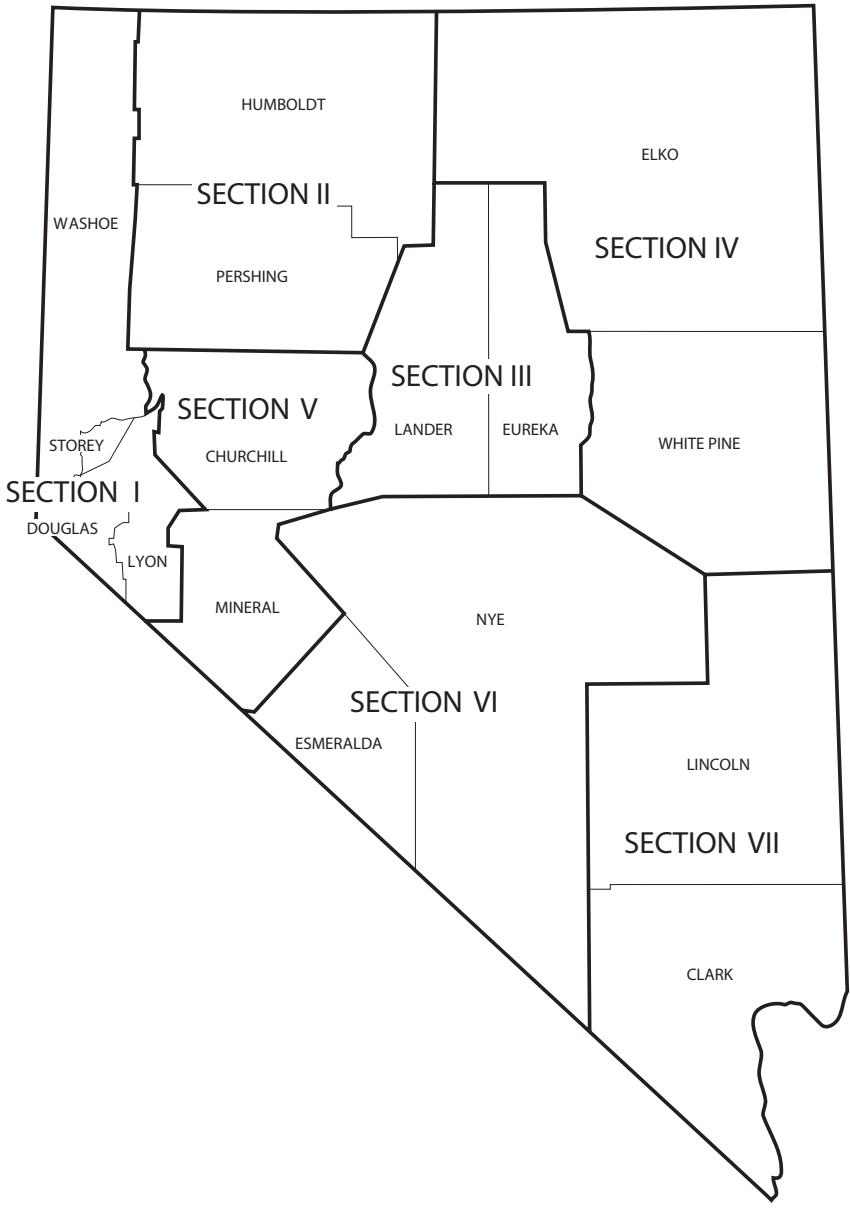
2016

This is the twenty-seventh of an annual series of summary reports on major mines of Nevada. Sand and gravel operations are not included. Information on employment and production for the calendar year 2015 was provided by the individual mine operators. The Nevada Division of Minerals maintains a complete register of Nevada mines. For further information, contact them at 400 W. King, Suite 106, Carson City, Nevada 89703 or call (775) 684-7040, fax (775) 684-7052, or visit their Web site at <http://minerals.nv.gov>.

College of Science
Mackay School of Earth Sciences and Engineering

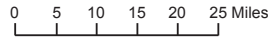
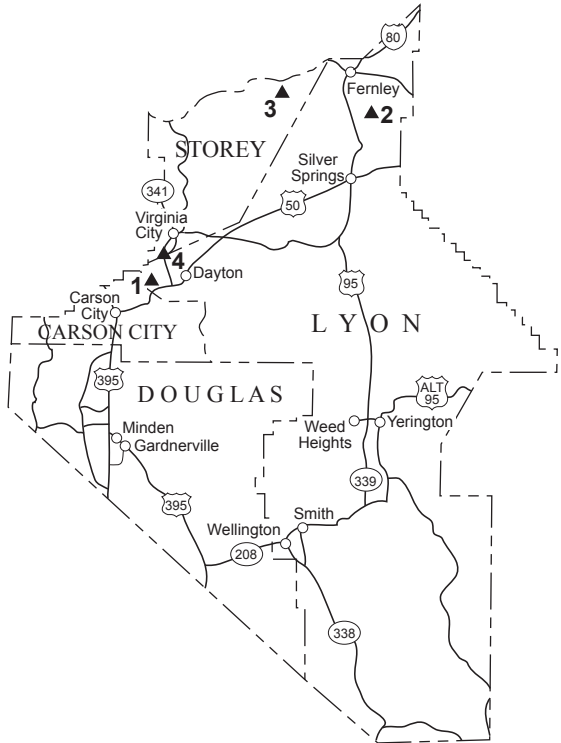
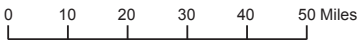
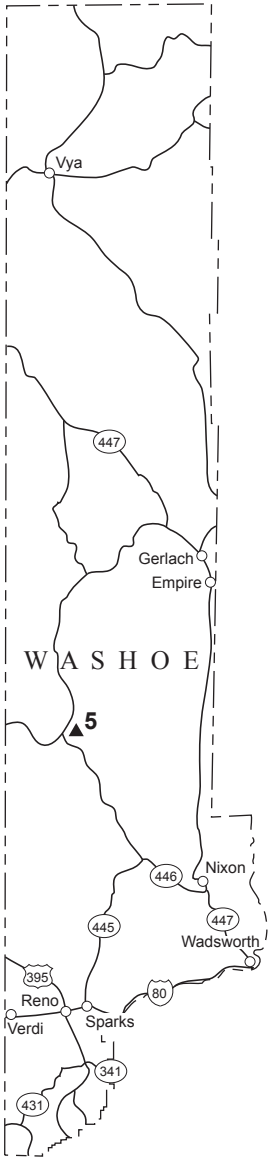


University of Nevada, Reno



Contents

Major mines	
Section I	
Lyon County	5
Storey County	5
Washoe County	5
Section II	
Humboldt County	6
Pershing County	8
Section III	
Eureka County	11
Lander County	12
Major mines, oil fields, and geothermal plants, 2015 (map)	14–15
Section IV	
Elko County	18
White Pine County	19
Section V	
Churchill County	20
Mineral County	21
Section VI	
Esmeralda County	22
Nye County	23
Section VII	
Clark County	25
Lincoln County	25
Summary of 2015 production	26
Economic impacts of mining in Nevada—2015	27
Index	32



Section I

Lyon County

Adams Claim Gypsum Mine (1)

Operator:

Art Wilson Co.
P.O. Box 20160
Carson City, NV 89721
775-882-0700 Fax: 882-0790
Company employees: 53
Contract employees: 2

Production:

Gypsum - 520,530 tons
Limestone - 17,413 tons

NCC Fernley Operations (2)

Operator:

Nevada Cement Co.
P.O. Box 840
Fernley, NV 89408
775-575-2281 Fax: 575-4387
Company employees: 117

Production:

Limestone - 88,597 tons

Storey County

Clark Mine (3)

Operator:

EP Minerals, LLC
640 Clark Station Rd.
Sparks, NV 89434
775-824-7700 Fax: 824-7715
Company employees: 4

Production:

Diatomite - No mine production in
2015

Lucerne Mine (4)

Operator:

Comstock Mining, Inc.
P.O. Box 1118
Virginia City, NV 89440
775-847-5272 Fax: 847-4762
Company employees: 53
Contract employees: 8

Production:

Gold - 15,451 oz
Silver - 221,723 oz

Washoe County

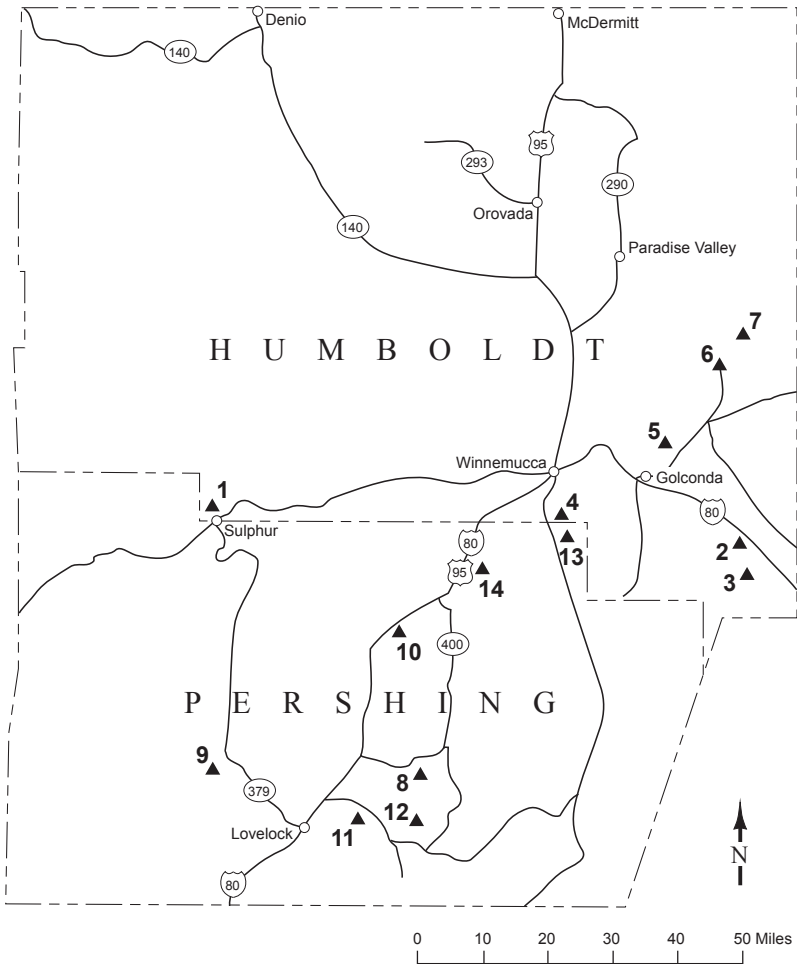
NCC Flanigan Mine (5)

Operator:

Nevada Cement Co.
P.O. Box 840
Fernley, NV 89408
775-575-2281 Fax: 575-4387

Production:

Specialty clays - 43,232 tons



Section II

Humboldt County

Hycoft Mine (1)

Operator:

Hycoft Mining Company
 P.O. Box 3030
 Winnemucca, NV 89446
 775-623-5260 Fax:623-0215
 Company employees: 98
 Contract employees: 5

Production:

Gold - 107,998 oz
 Silver - 621,788 oz

Lone Tree Complex (2)

Operator:

Newmont Mining Corp.
 P.O. Box 388
 Valmy, NV 89438
 775-738-4000

Company employees: 56
 Contract employees: 61

Production:

Gold - 21,349 oz

Marigold Mine (3)

Operator:

Silver Standard Resources, Inc.
P.O. Box 160
Valmy, NV 89438
775-635-2317 Fax: 635-2551
Company employees: 365
Contract employees: 14

Production:

Gold - 207,005 oz
Silver - 2,841 oz

MIN-AD Mine (4)

Operator:

MIN-AD, Inc.
P.O. Box 39
Winnemucca, NV 89446
775-623-5944 Fax: 623-9028
Company employees: 15

Production:

Dolomite - 46,183 tons (shipped)

Pinson Mine (5)

Operator:

Atna Resources, Inc.
P.O. Box 969
Winnemucca, NV 89446
775-529-5026 Fax: 529-5030

Production:

Gold - 16,898 oz
(Mining ceased in 2015)

Turquoise Ridge Joint Venture (6)

Operator:

Barrick Gold Corporation
2055 Getchell Mine Road
Golconda, NV 89414
775-748-3172 Fax: 748-3125
Company employees: 497
Contract employees: 101

Production:

Gold - 289,421 oz

Twin Creeks Mine (7)

Operator:

Newmont Mining Corp.
P.O. Box 69
Golconda, NV 89414
775-635-9400 Fax: 635-4602
Company employees: 485
Contract employees: 297

Production:

Gold - 470,759 oz
Silver - 143,631 oz

Pershing County

Coeur Rochester Mine (8)

Operator:

Coeur Rochester, Inc.
P.O. Box 1057
Lovelock, NV 89419
775-273-7995 Fax: 273-7423
Company employees: 301
Contract employees: 36

Production:

Gold - 52,588 oz
Silver - 4,630,739 oz

Colado Mine (9)

Operator:

EP Minerals, LLC
P.O. Box 959
Lovelock, NV 89419
775-824-7591 Fax: 824-7595
Company employees: 35

Production:

Diatomite - 156,565 tons

Florida Canyon Mine (10)

Operator:

Jipangu Florida Canyon Mining, Inc.
P.O. Box 330
Imlay, NV 89418
775-538-7300 Fax: 538-7691
Company employees: 51

Production:

Gold - 21,716 oz
Silver - 67,687 oz

Nassau Mine (11)

Operator:

American Colloid Company
P.O. Box 428
Lovell, WY 82431
307-548-6521 Fax: 548-6449

Production:

Bentonite - No mine production in
2015

Relief Canyon Limestone Mine (12)

Operator:

Nevada Cement Company
P.O. Box 840
Fernley, NV 89408
775-575-2281 Fax: 575-4387
Company employees: 6

Production:

Limestone - 28,865 tons

Sexton Mine (13)

Operator:

Nutritional Additives Corp.
415 Wellington St.
Winnemucca, NV 89445
775-623-1151 Fax: 623-1153

Production:

Dolomite - No mine production in
2015

Sunrise Placer Mine (14)

Operator:

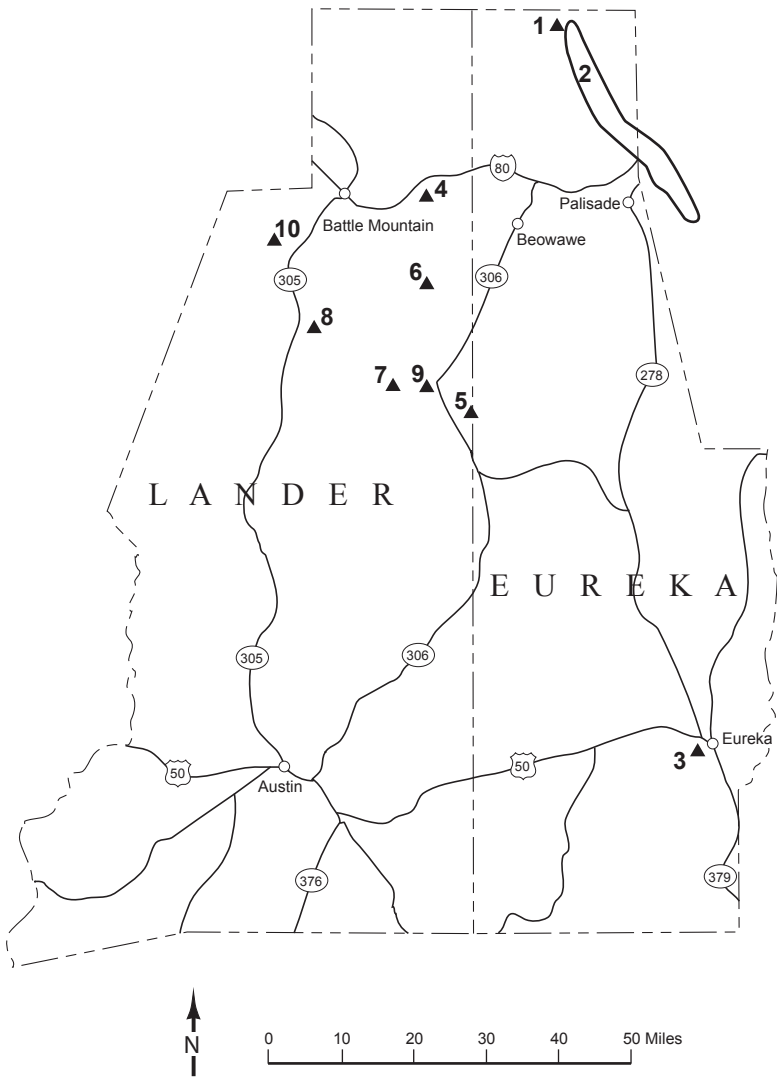
Sunrise Minerals, LLC
9405 Betty Lane
Winnemucca, NV 89445
775-340-7044 Fax: 623-5043
Company employees: 8

Production:

Gold - 471 oz
Silver - 210 oz



***Coeur Rochester, Sunflower pit, Pershing County
(Rich Perry photo).***



Section III

Eureka County

Betze-Post Mine (1)

Operator:

Barrick Goldstrike Mines, Inc.

P.O. Box 29

Elko, NV 89803

775-748-1001 Fax: 748-1240

Company employees: 1,140

Production:

Gold - 642,493 oz

Silver - 67,223 oz

Eastern Nevada Operations

(Carlin Operations) (2)

Operator:

Newmont Mining Corp.

1655 Mountain City Highway

Elko, NV 89801

775-778-4000 Fax: 778-4360

Company employees: 2,189

Contract employees: 431

Production:

Gold - 885,242 oz

Silver - 92,173 oz

Ruby Hill Mine (3)

Operator:

Ruby Hill Mining Co.

P.O. Box 676

Eureka, NV 89316

775-401-6435

Company employees: 14

Production:

Gold - 10,673 oz

Silver - 24,842 oz

Lander County

Argenta Mine (4)

Operator:

Baker Hughes, Inc.
P.O. Box 277
Battle Mountain, NV 89820
775-635-5441 Fax: 635-5455

Shipped:

Barite - No Mine production in 2015

Cortez Hills Mine (5)

Operator:

Barrick Cortez, Inc.
HC66 Box 1250
Crescent Valley, NV 89821
775-468-4400 Fax: 468-4496
Company employees: 322
Contract employees: 130

Production:

(underground only, excluding the open-pit)

Gold - 478,940 oz
Silver - 16,210 oz

Fire Creek Mine (6)

Operator:

Klondex Mines
2720 Ruby Vista Dr., Ste. 102
Elko, NV 89801
775-738-6070 Fax: 738-6050
Company employees: 69
Contract employees: 9

Production:

Gold - 77,055 oz
Silver - 92,114 oz

Greystone Mine (7)

Operator:

M-I Swaco
P.O. Box 370
Battle Mountain, NV 89820
775-635-5135 Fax: 635-2645
Company employees: 24

Shipped:

Barite - 145,367 tons

Mountain Spring Mine (8)

Operator:

M-I Swaco
P.O. Box 370
Battle Mountain, NV 89820
775-635-5135 Fax: 635-2645
Company employees: 33

Shipped:

Barite - 68,882 tons

Pipeline Mine (9)

Operator:

Barrick Cortez, Inc.
HC66 Box 1250
Crescent Valley, NV 89821
775-468-4400 Fax: 468-4496
Company employees: 923
Contract employees: 425

Production:

(includes the Cortez Hills open-pit)

Gold - 520,060 oz
Silver - 17,602 oz

Phoenix Mine (10)

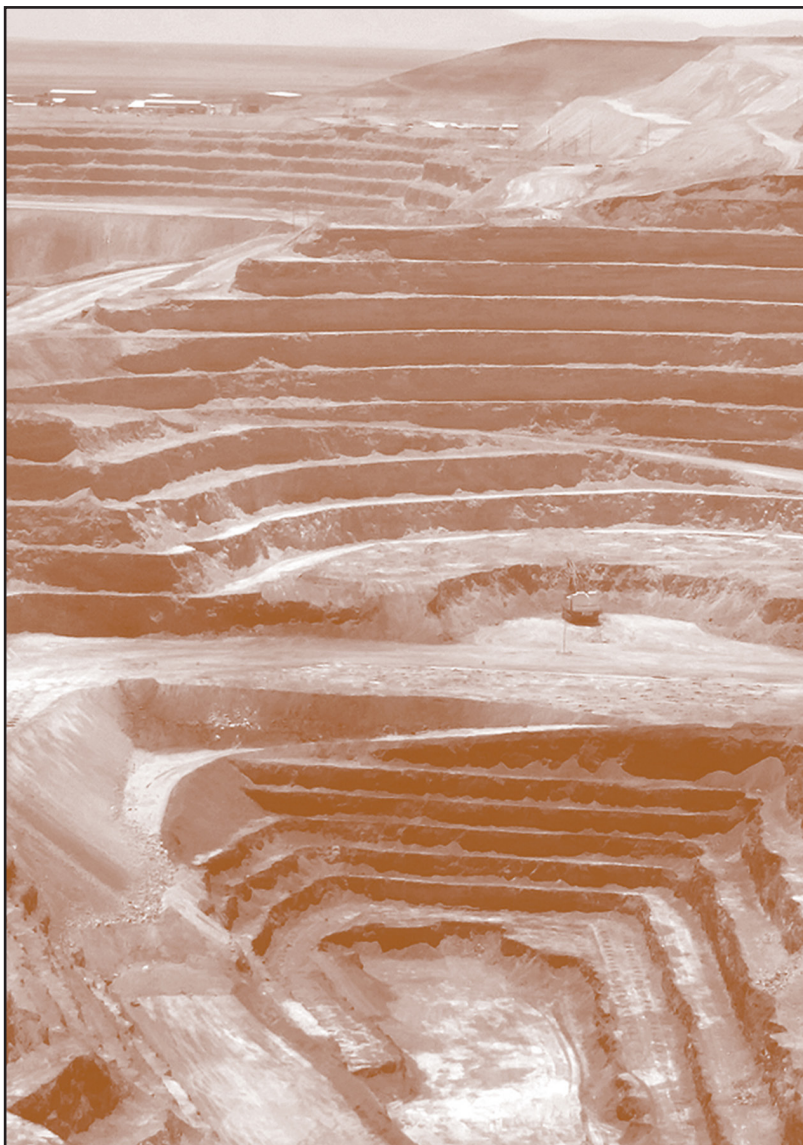
Operator:

Newmont Mining Corp.
P.O. Box 1657
Battle Mountain, NV 89820
775-635-6423 Fax: 635-6460
Company employees: 485
Contract employees: 297

Production:

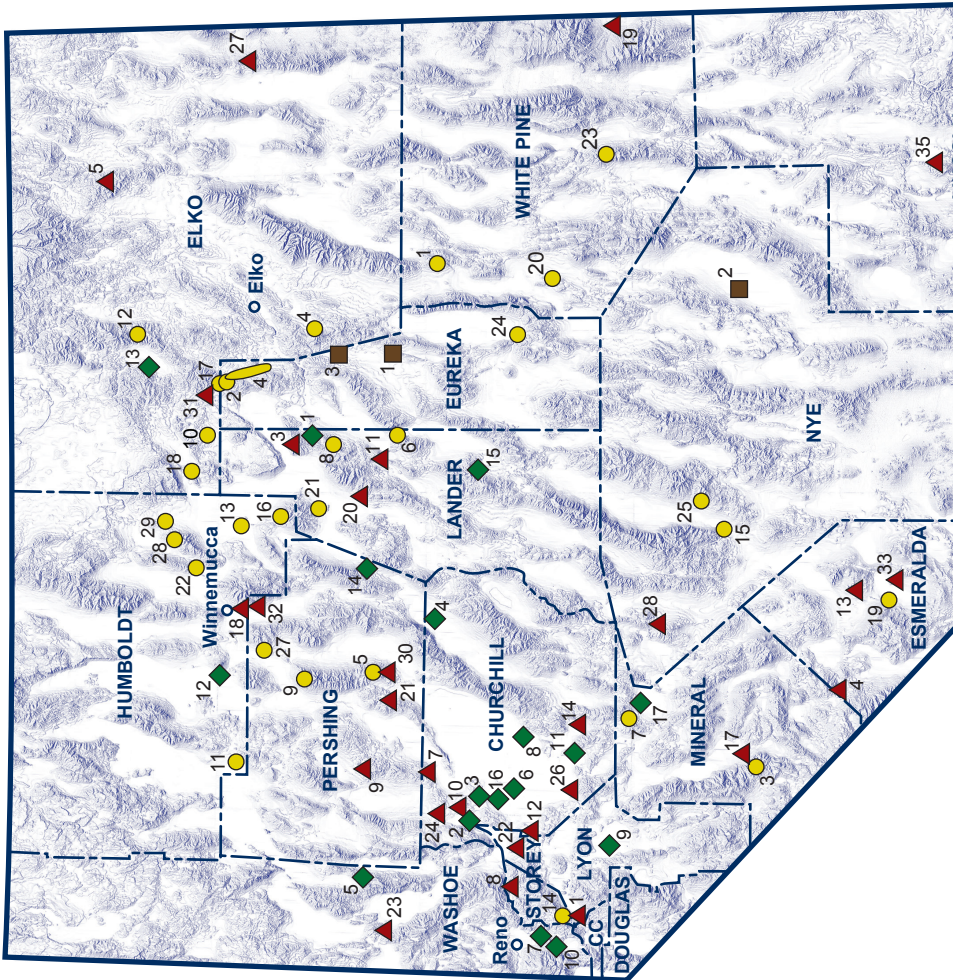
Gold - 183,371 oz
Silver - 966,159 oz
Copper - 46,330,821 pounds

(Collate backside of centerfold here)

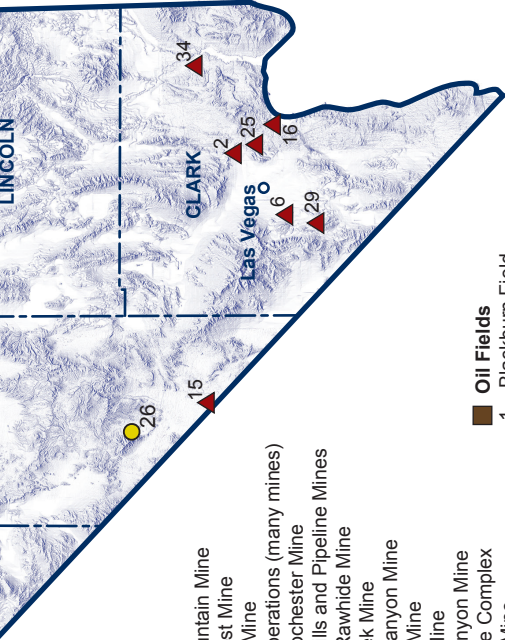


*Twin Creeks Mine, Humboldt County
(Connor Ostling photo).*

(Collate centerfold here, major mines map)



(Collate centerfold here, major mines map)



Industrial Minerals

1. Adams Claim Gypsum Mine
2. Apex Limestone Quarry
3. Argenta Barite Mine
4. Basalt Diatomite Mine
5. Big Ledge Barite Mine
6. Blue Diamond Gypsum Mine
7. Churchill Limestone Mine
8. Clark Diatomite Mine
9. Colorado Diatomite Mine
10. Fernley Diatomite Operations
11. Greystone Barite Mine
12. Hazen Diatomite Mine
13. Heart of Nature Gypsum Mine
14. Huck Salt Mine
15. IMV Nevada Clay
16. Lima Nevada Gypsum Mine
17. Lucky Boy Silica Quarry
18. MIN-AD Dolomite Mine
19. Mt. Moriah Quartzite Quarry
20. Mountain Spring Barite Mine
21. Nassau Bentonite Mine
22. NCC Fernley Limestone Ops.
23. NCC Flanigan Clay Mine
24. Nightingale Diatomite Mine
25. PABCO Gypsum
26. Perlite Mine
27. Pilot Peak Limestone Quarry
28. Premier Magnesite
29. Rainbow Quarry
30. Relief Canyon Limestone Mine
31. Rossi Barite Mine
32. Sexton Diatomite Mine
33. Silver Peak Lithium Ops.
34. Simplot Silica Products
35. Tenacity Perlite Mine

Metals

1. Bald Mountain Mine
2. Betze-Post Mine
3. Borealis Mine
4. Carlin Operations (many mines)
5. Coeur Rochester Mine
6. Cortez Hills and Pipeline Mines
7. Denton-Rawhide Mine
8. Fire Creek Mine
9. Florida Canyon Mine
10. Hollister Mine
11. Hycroft Mine
12. Jerritt Canyon Mine
13. Lone Tree Complex
14. Lucerne Mine
15. Manhattan Gulch Mine
16. Marigold Mine
17. Meikle Mine
18. Midas Mine
19. Mineral Ridge Mine
20. Pan Mine
21. Phoenix Mine
22. Pinson Mine
23. Robinson Mine
24. Ruby Hill Mine
25. Smoky Valley Common Ops.
26. Sterling Mine
27. Sunrise Placer Mine
28. Turquoise Ridge Joint Venture
29. Twin Creeks Mine

Oil Fields

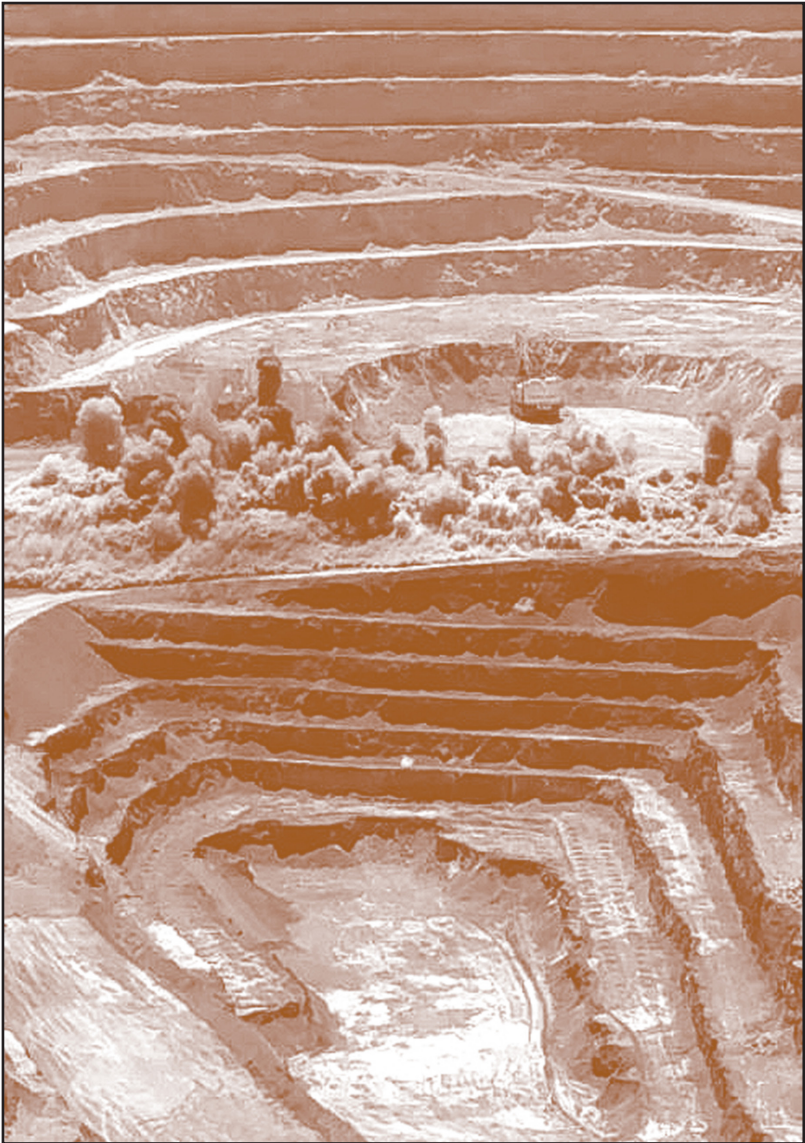
1. Blackburn Field
2. Railroad Valley (Eagle Springs, Trap Spring, Currant, Sand Dune, Grant Canyon, Bacon Flat, Kate Spring, Duckwater Creek, Sans Spring, and Ghost Ranch Fields)
3. Tomera Ranch Field

Geothermal Power Plants

1. Beowawe
2. Bradys Hot Springs
3. Desert Peak 2
4. Dixie Valley
5. San Emidio
6. Soda Lake 1 and 2
7. Steamboat I, IA, II, and III, Galena
8. Stillwater 1 and 2
9. Wabuska
10. Steamboat Hills
11. Salt Wells
12. Blue Mountain
13. Tuscarora
14. Jersey Valley
15. McGinness Hills
16. Patua
17. Wild Rose

Major mines, oil fields, and geothermal plants, 2015.

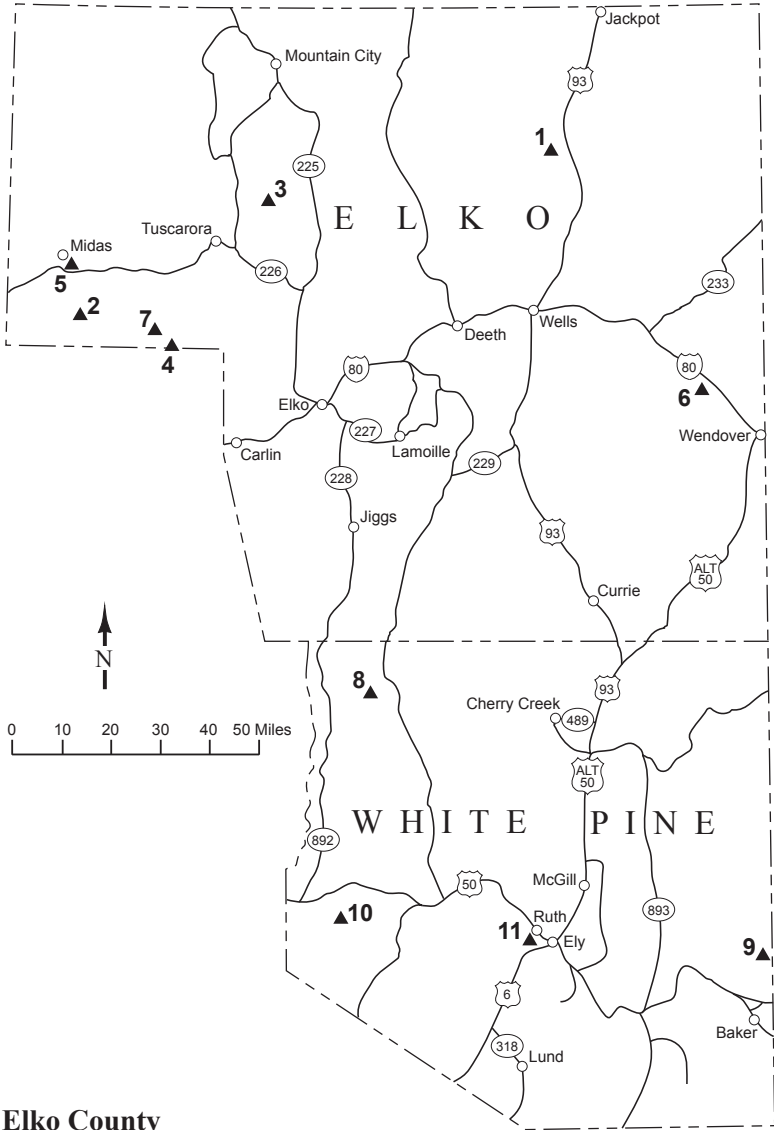
(Collate backside of centerfold here)



***Blast at Twin Creeks Mine, Humboldt County
(Connor Ostling photo).***



*Pilot Peak Quarry, Elko County
(Rich Perry photo).*



Elko County

Big Ledge Mine (1)

Operator:
 National Oilwell Varco
 247 Bluffs Ave., Suite 101
 Elko, NV 89801
 775-738-7171 Fax: 738-7196
 Company employees: 15

Shipped:
 Barite - 15,549 tons

Hollister Mine (2)

Operator:
 Carlin Resources, LLC
 905 Railroad St., Ste. 101
 Elko, NV 89801
 775-623-5760 Fax: 623-5759

Production:
 No mine production in 2015

Section IV

Jerritt Canyon Mine (3)

Operator:

Jerritt Canyon Gold, LLC
HC31 Box 78
Elko, NV 89801
775-738-5600 Fax: 758-9233
Company employees: 248
Contract employees: 224

Production:

Gold - 167,683 oz
Silver - 4,000 oz

Meikle Mine (4)

Operator:

Barrick Goldstrike Mines, Inc.
P.O. Box 29
Elko, NV 89803
775-748-1001 Fax: 748-1240
Company employees: 638

Production:

Gold - 411,003 oz
Silver - 17,749 oz

Midas Mine (5)

Operator:

Klondex Mines
2720 Ruby Vista Dr., Ste. 102
Elko, NV 89801
775-738-6070 Fax: 738-6050
Company employees: 159
Contract employees: 21

Production:

Gold - 28,838 oz
Silver - 1,513,112 oz

Pilot Peak Quarry (6)

Operator:

Graymont
P.O. Box 2520
West Wendover, NV 89883
775-483-5463
Company employees: 52

Production:

Limestone - 1,259,359 tons

Rossi Mine (7)

Operator:

Halliburton Energy Services
912 Dunphy Ranch Rd.
Battle Mountain, NV 89820
775-468-0515 Fax: 468-2060
Company employees: 30
Contract employees: 10

Shipped: Barite - 184,613 tons

White Pine County

Bald Mountain Mine (8)

Operator:

Barrick Gold U.S., Inc.
P.O. Box 2706
Elko, NV 89803
775-237-7100 Fax: 237-7101
Company employees: 438
Contract employees: 157

Production:

Gold - 191,088 oz
Silver - 26,164 oz

Mt. Moriah Quarry (9)

Operator:

Mt. Moriah Stone Quarries
#10 Hatch Rock Rd.
Baker, NV 89311
435-855-2232 Fax: 855-2332
Company employees: 37

Production:

Quartzite - 8,126 tons

Pan Mine (10)

Operator:

MDW Pan, LLP
P.O. Box 150278
Ely, NV 89315
(Filed for bankruptcy in 2015)
Company employees: 16
Contract employees: 27

Production:

Gold - 21,316 oz
Silver - 680 oz

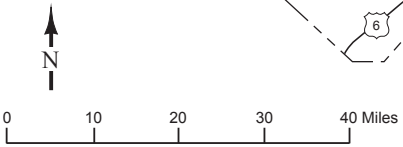
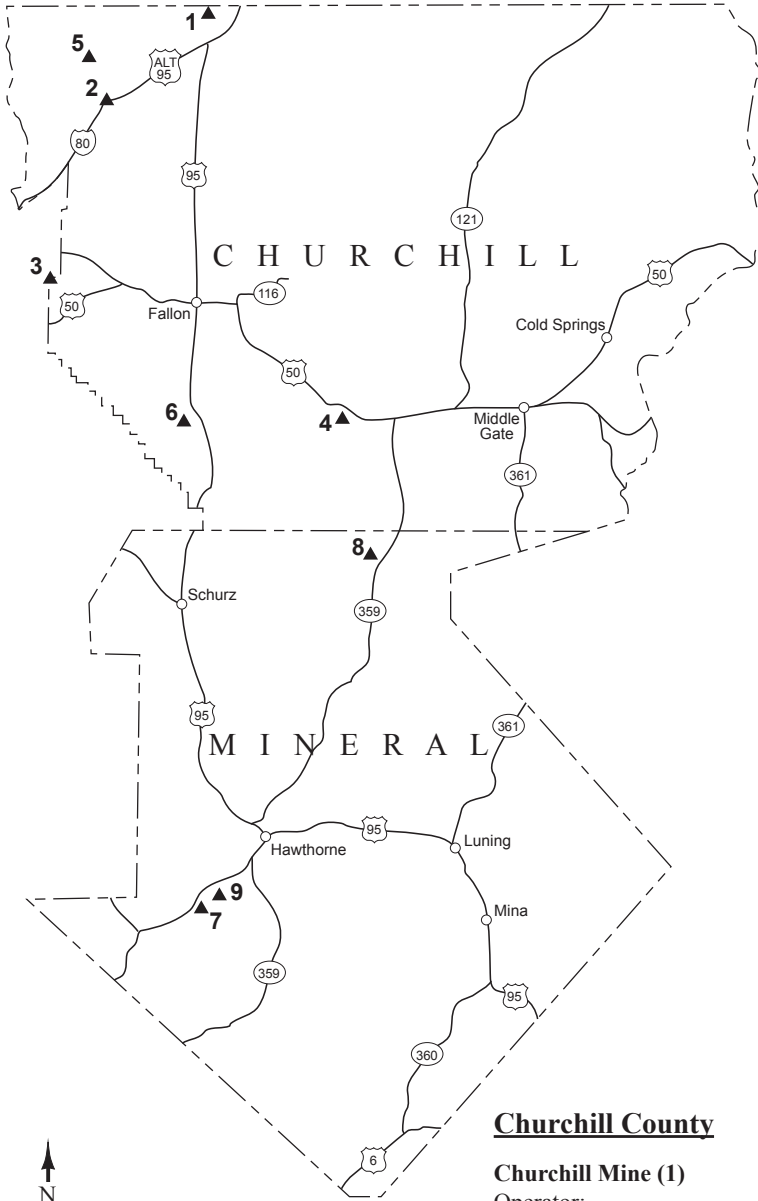
Robinson Mine (11)

Operator:

KGHM International, Ltd.
P.O. Box 382
Ruth, NV 89319
775-289-7000 Fax: 289-7349
Company employees: 605
Contract employees: 12

Production:

Copper - 131,307,031 pounds
Gold - 60,360 oz
Molybdenite - 905,061 pounds



Churchill County

Churchill Mine (1)

Operator:
 Nevada Cement Co.
 P.O. Box 840
 Fernley, NV 89408
 775-575-2281 Fax: 575-4387
 Company employees: 6

Production:
 Limestone - 519,125 tons

Section V

Fernley Operations (2)

Operator:

EP Minerals, LLC
P.O. Box 860
Fernley, NV 89408
775-423-6668 Fax: 423-6411
Company employees: 35

Production:

Diatomite - 31,817 tons

Hazen Mine (3)

Operator:

EP Minerals, LLC
640 Clark Station Rd.
Sparks, NV 89434
775-824-7700 Fax: 824-7715
Company employees: 2
Contract employees: 4

Production:

Diatomite - 9,283 tons

Huck Salt (4)

Operator:

Huck Salt Company
2900 Phritzie Ln.
Fallon, NV 89406
775-423-2055 Fax: 423-0467
Company employees: 9

Shipped:

Salt - 11,649 tons

Nightingale Mine (5)

Operator:

Imerys Minerals California, Inc.
100 Front Street
Fernley, NV 89408
775-575-2536 Fax: 575-1570
Company employees: 14
Contract employees: 4

Production:

Diatomite - 27,800 tons

Perlite Mine (6)

Operator:

EP Minerals, LLC
640 Clark Station
Sparks, NV 89434
775-824-7700 Fax: 824-7715
Company employees: 5

Production:

Perlite - 23,730 tons

Mineral County

Borealis Mine (7)

Operator:

Borealis Mining Company, LLC
P.O. Box 549
Hawthorne, NV 89415
775-341-0042
Company employees: 40

Production:

Gold - 7,998 oz
Silver - 29,321 oz

Denton-Rawhide Mine (8)

Operator:

Rawhide Mining, LLC
P.O. Box 2070
Fallon, NV 89407
775-945-1015 Fax: 945-1213
Company employees: 62
Contract employees: 30

Production:

Gold - 23,334 oz
Silver - 147,316 oz

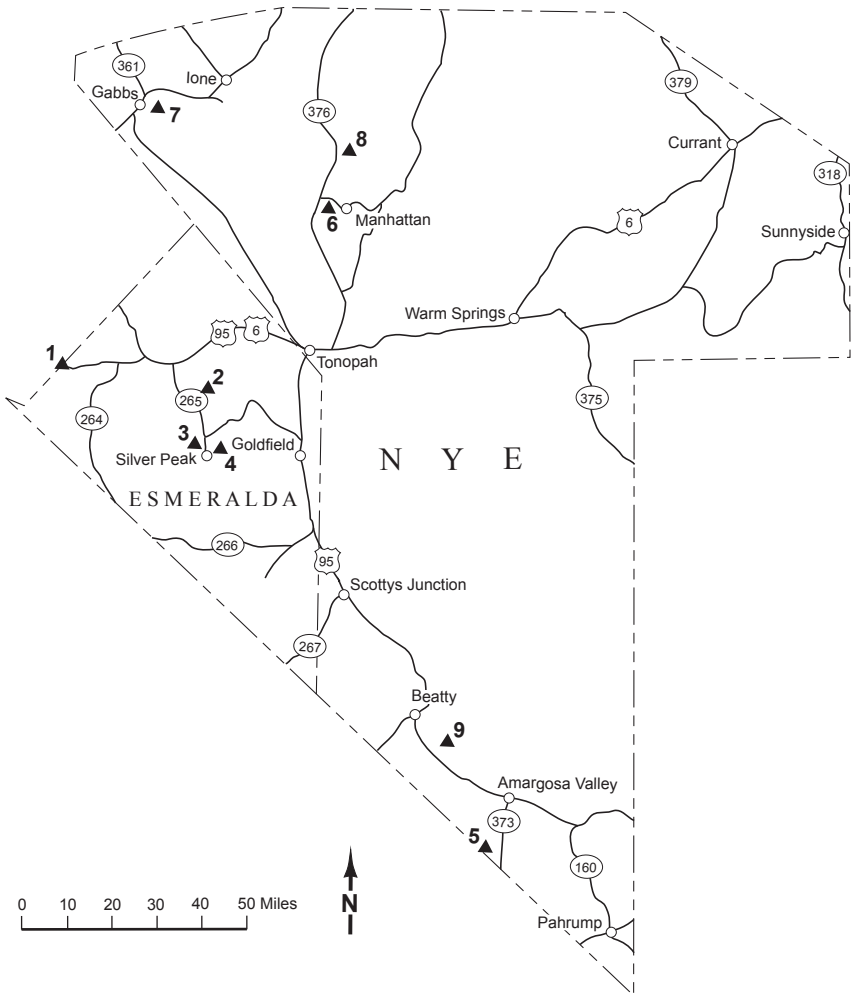
Lucky Boy Quarry (9)

Operator:

James Hardie Building Products, Inc.
P.O. Box 295
Goldfield, NV 89013
775-482-1176

Production:

Silica sand - No mine production in
2015



Esmeralda County

Basalt Mine (1)

Operator:

Grefco Minerals, Inc.

P.O. Box 278

Dyer, NV 89010

775-573-2422

Company employees: 15

Production:

Diatomite - 1,687 tons

Section VI

Heart of Nature (2)

Operator:

Heart of Nature, LLC
34710 7th Standard Rd.
Bakersfield, CA 93314
661-399-9755 Fax: 399-9758
Company employees: 1
Contract employees: 4

Production:

Gypsum/sulfur soil amendment
- 27,757 tons

Mineral Ridge Mine (3)

Operator:

Mineral Ridge Gold, LLC
1515 7th St.
Elko, NV 89801
702-799-9273 Fax: 775-753-4780
Company employees: 85
Contract employees: 30

Production:

Gold - 39,690 oz
Silver - 19,742 oz

Silver Peak Operations (4)

Operator:

Rockwood Lithium, Inc.
P.O. Box 98
Silver Peak, NV 89047
775-937-2222 Fax: 937-2250
Company employees: 72
Contract employees: 10

Shipped:

Lithium compounds - 11,716,536 lbs

Nye County

IMV Nevada (5)

Operator:

Lhoist North America of Arizona
P.O. Box 86
Amargosa Valley, NV 89020
775-372-5341 Fax: 372-5320
Company employees: 26
Contract employees: 8

Production:

Specialty clays - 30,299 tons

Manhattan Gulch Mine (6)

Operator:

A.U. Mines, Inc.
P.O. Box 72
Manhattan, NV 89022
775-487-2465 Fax: 487-2467

Production:

Gold - Ceased mine operations in
2015

Premier Magnesia (7)

Operator:

Premier Magnesia, LLC
P.O. Box 177
Gabbs, NV 89409
775-285-2601 Fax: 285-4021
Company employees: 110
Contract employees: 5

Shipped:

Magnesium compounds - 108,943 tons

Smoky Valley Common Operation (8)

Operator:

Round Mountain Gold Corp.
P.O. Box 480
Round Mountain, NV 89045
775-377-2366 Fax: 377-3224
Company employees: 867
Contract employees: 236

Production:

Gold - 385,159 oz
Silver - 775,025 oz

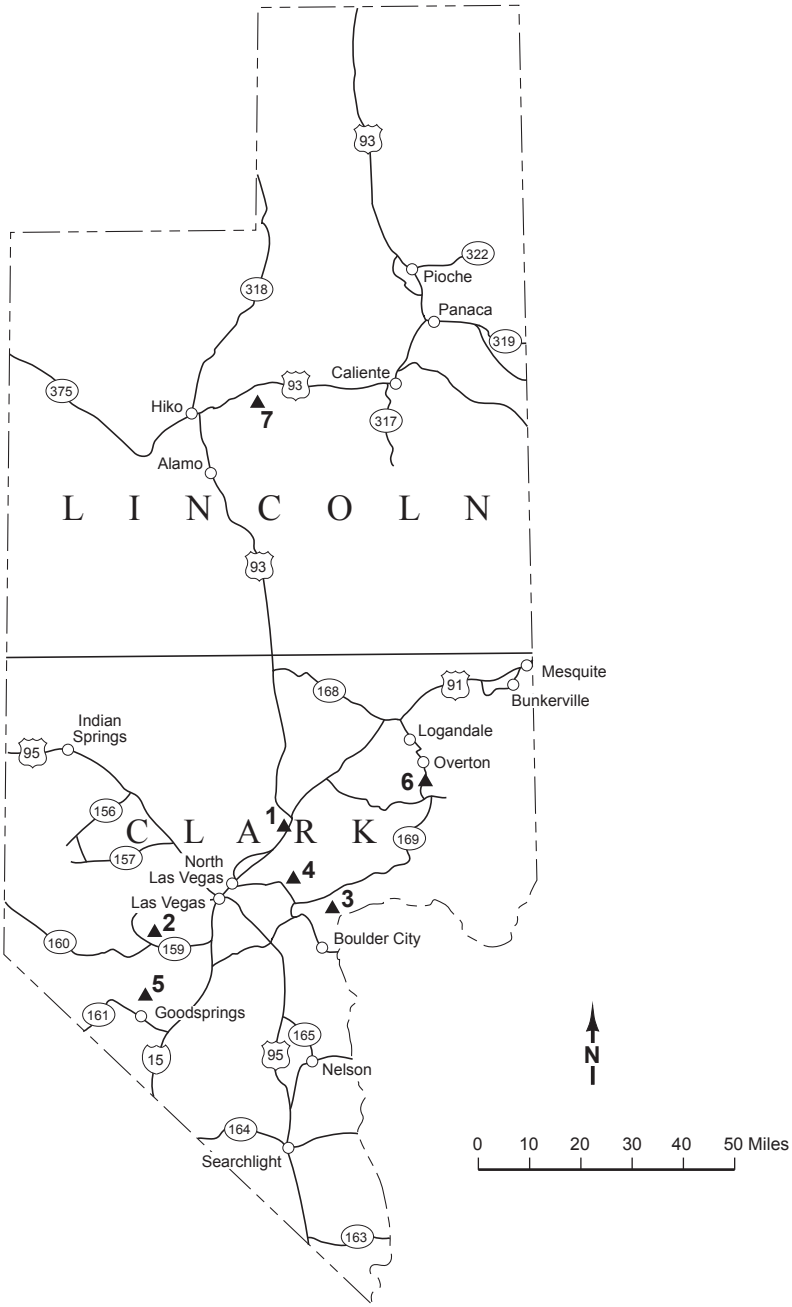
Sterling Mine (9)

Operator:

Sterling Gold Mining Corp.
P.O. Box 549
Beatty, NV 89003
866-608-4381 Fax: 775-981-9044
Company employees: 5

Production:

Gold - 1,700 oz



Section VII

Clark County

Apex Quarry (1)

Operator:

Lhoist North America
12101 N. Las Vegas Blvd.
North Las Vegas, NV 89165
702-643-7702 Fax: 643-9517
Company employees: 140
Contract employees: 15

Production:

Limestone - 1,465,733 tons
Dolomite - 286,598 tons

Blue Diamond Hill Mine (2)

Operator:

Gypsum Resource Materials, LLC
P.O. Box 147
Blue Diamond, NV 89004
702-830-3378 Fax: 441-7148
Company employees: 53
Contract employees: 20

Production:

Gypsum - 1,602,431 tons
Limestone - 4,432,395 tons

Lima Nevada Gypsum Mine (3)

Operator:

H. Lima Nevada, LLC
704 E. Yosemite
Manteca, CA 95336
661-549-0784 Fax: 363-2294
Company employees: 8
Contract employees: 1

Production:

Gypsum - 25,082 tons

PABCO Gypsum Mine (4)

Operator:

PABCO Building
Products, LLC
P.O. Box 364329
North Las Vegas, NV 89036
702-407-3700 Fax: 643-6249
Company employees: 17
Contract employees: 1

Production:

Gypsum - 1,249,931 tons

Rainbow Quarry (5)

Operator:

Las Vegas Rock, Inc.
P.O. Box 19118
2 Jean Prison Rd.
Jean, NV 89019
702-791-7625 Fax: 896-4533
Company employees: 15

Production:

Meta-quartzite - 81,500 tons

Simplot Silica Products (6)

Operator:

J.R. Simplot Company
P.O. Box 308
Overton, NV 89040
702-397-2667 Fax: 397-2798
Company employees: 41

Shipped:

Silica sand - 778,484 tons

Lincoln County

Tenacity Perlite Mine (7)

Operator:

Wilkin Mining & Trucking, Inc.
HC 34 Box 199
Caliente, NV 89008
775-728-4463
Company employees: 13

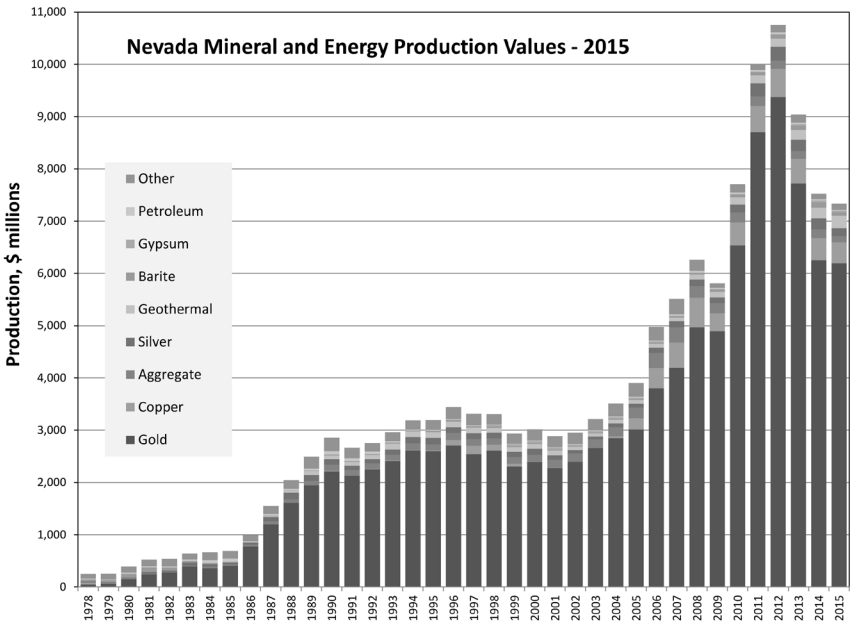
Production:

Perlite - 2,184 tons

Summary of 2015 production

Gold	5,339,659	ounces
Silver	9,498,051	ounces
Barite (shipped)	516,380	tons
Copper	177,637,852	pounds
Diatomite	227,152	tons
Dolomite	332,781	tons
Gypsum	3,397,974	tons
Limestone	7,811,487*	tons
Lithium compounds (shipped)	11,716,536	pounds
Magnesium compounds (shipped)	108,943	tons
Molybdenite	905,061	pounds
Perlite	25,914	tons
Salt (shipped)	11,649	tons
Silica sand (shipped)	778,484	tons
Specialty clay	73,531	tons

*Sloan Quarry production not reported



Economic Impacts of Mining in Nevada—2015

Nevada's mining industry recorded approximately \$7.37 billion in total value of all commodities in 2015, representing a 2.4% decrease from the \$7.55 billion value in 2014. Nearly 86% of the value was driven by gold and silver, which contributed just over \$6.3 billion, based on the actual gross proceeds reported to the Nevada Department of Taxation. According to Kitco Metals Inc. (www.kitco.com), the average prices for gold and silver in 2015 were \$1,160.06 and \$15.68 per troy ounce, respectively. Nevada led the nation in 2015 in the production of gold, barite, lithium compounds and magnesium compounds. Nevada produced a wide variety of other mineral and energy commodities such as clays, copper, diatomite, dolomite, geothermal energy, gypsum, lapidary and gem stones, limestone, molybdenite, oil, perlite, salt, silica sand, silver, and specialty aggregates. A summary of commodity production amounts, value, and year over year percentage changes can be seen in table 1.



Production Highlights

Nevada's gold production was 5,339,659 troy ounces in 2015 compared to 4,940,540 troy ounces in 2014, an increase of 8%. According to the USGS, Nevada remains the nation's top gold producer with about 83% (166 metric tonnes) of the U.S. total (200 metric tonnes) and would rank 4th in world gold production behind China, Australia and Russia. A summary of 2015 metal production, ranked by producer, is shown in table 2.

Table 1. Summary of 2015 Nevada Mineral Commodity Production

Commodity	Production Amount	Unit	YOY		YOY Value Change (%)
			Change (%)	Value (\$)	
Gold	5,339,659	ounces	8.1%	\$6,194,324,820	-1.0%
Silver	9,498,051	ounces	-13.1%	\$148,929,440	-28.6%
Barite (shipped)	516,380	tons	-36.1%	\$60,003,381	-42.1%
Copper	177,637,852	pounds	33.9%	\$400,996,700	1.4%
Diatomite	227,152	tons	-40.7%	\$43,117,879	1.1%
Dolomite	332,781	tons	-4.0%	\$3,766,691	-4.7%
Geothermal energy (sold)	3,114,842	megawatt hours	13.6%	\$240,033,610	17.4%
Gypsum	3,397,974	tons	21.2%	\$37,294,471	12.0%
Limestone	7,811,487	tons	-1.1%	\$36,928,188	-4.4%
Lithium compounds (shipped)	11,716,536	pounds	24.2%	\$25,598,063	24.1%
Magnesium compounds (shipped)	108,943	tons	5.5%	\$6,696,597	-0.1%
Molybdenite	905,061	pounds	22.0%	\$7,322,766	-16.0%
Oil (sold)	281,875	barrels	-9.6%	\$12,606,644	-53.2%
Perlite	25,914	tons	-21.1%	\$2,770,366	-55.4%
Salt (shipped)	11,649	tons	-18.1%	\$454,311	-14.3%
Silica sand (shipped)	778,484	tons	6.0%	\$21,186,659	10.1%
Specialty clays	73,531	tons	-54.1%	\$7,523,135	-14.8%
Aggregates	27,998,707	tons	20.4%	\$121,000,000	-28.0%
Total Value				\$7,370,553,720	-2.4

Employment

According to the Nevada Department of Employment, Training, and Rehabilitation, the Nevada mining industry, including support activities and oil and gas extraction, employed an average of 14,196 employees in 2015. The average pay for mineral industry employees during this time was \$92,077 per year, the second highest average of any employment sector in the state. Mining employment has remained an important factor in Nevada.

Permitting and Reclamation

Before mining can take place, plans of operation must be submitted and permits must be obtained from federal and state agencies to ensure that resources such as wildlife, air, and water are protected. Nevada and federal laws and regulations require that lands disturbed by mining activities must be rehabilitated so they can be used for other activities once mining is completed. This process, called reclamation, returns mined areas to other productive uses such as livestock grazing, wildlife habitat, or other

industrial applications. To ensure that reclamation is done, mine operators are required to post reclamation bonds that are held by government agencies. The bonds are released only after the mined area is stabilized and the reclamation goals have been met. According to the Nevada Division of Environmental Protection, approximately \$2.66 billion in reclamation bonds and other financial assurance are currently posted. Mine operators are proud of their efforts and are constantly seeking ways to enhance their reclamation technology.

Gold Reserves

Gold reserves are defined as that portion of a gold ore deposit known to be economically feasible for extraction. The amount of reserves is always in a state of flux, due to some reserves being lost to production, additions of new reserves through new discoveries, and changing economic conditions. The price of gold and the cost of production are the main factors in determining whether a reserve is really a reserve or just a sub-economic resource. Extensive gold resources, not currently economic, are known to exist at or near many mining

Table 2. 2015 Nevada Metal Production, by Producer

Operator	Gold (ozs)	Silver (ozs)	Copper (lbs)	Moly (lbs)
Barrick	2,663,902	557,303		
Newmont	1,633,076	1,201,963	46,330,821	
Silver Standard Resources	207,005	2,841		
Kinross	192,580	387,513		
Jerritt Canyon	167,683	4,000		
Hycroft	107,998	621,788		
Klondex	105,893	1,605,226		
KGHM International	60,360		131,307,031	905,061
Coeur Rochester	52,588	4,630,739		
Mineral Ridge Gold	39,690	19,742		
Rawhide Mining	23,334	147,316		
Jipangu International	21,716	67,687		
Midway Gold	21,316	680		
Comstock Mining	15,451	221,723		
Atna Resources	16,898	NR		
Borealis Mining	7,998	29,321		
Sterling Gold Mining	1,700			
Sunrise Minerals	471	210		
Totals	5,339,659	9,498,051	177,637,852	905,061

operations in Nevada. An increase in the gold price with all else being equal would mean many companies would be able to reclassify their resources into a reserve category. An increase in the cost of regulatory compliance has the same effect as a lowering of the gold price, thus increasingly complex and expensive regulations can reduce reserves. The publically reported reserves, at 2015 year end, were approximately 70 million ounces of gold, and assuming similar economic conditions, are sufficient to sustain gold production near current levels in Nevada for about 12–15 years, see table 3.

Exploration

Exploration for new deposits, particularly gold, is an ongoing effort by both the operating companies and many others who do not operate mines in the state. Exploration geologists, drillers, assayers, and others who support exploration activities represent a significant positive economic impact, particularly in Nevada's rural areas. Exploration activity and funding, like gold reserves, are closely tied to economic conditions and commodity prices. The

amount of exploration activity in 2015 continued to decrease, largely due to declining gold prices, which ranged from a high of \$1,295.75 in January to a low of \$1,049.40 in December of 2015.

Oil and Geothermal Activity

Economic activity from oil and gas exploration and production is relatively minor when compared to mining, but are locally important to the economy of east-central Nevada. In oil field terms, Nevada is considered a frontier state, meaning its potential is yet to be realized. Exploration activity and production were both negatively impacted by the price of crude in 2015 which ranged from a monthly average high of \$59.82 to a low of \$30.32, considerably less than the \$93.17 average price in 2014 for a barrel of West Texas Intermediate crude. Oil production in 2015 was 281,382 barrels (42 gallons per barrel), with 281,875 barrels sold worth approximately \$12.6 million. Table 4 summarizes the number of barrels sold and wells by operator and field in 2015.

Nevada is rich in geothermal resources and is second only to California in the production of geothermal energy.

Table 3. Nevada Mine Reserves (Proven and Probable) Reported for End of Year 2015

Company	Mine	Gold (ozs)	Silver (ozs)	Copper (lbs)
Newmont	Carlin Operations	16,780,000		
Newmont	Phoenix	5,010,000	73,510,000	1,750,000,000
Newmont	Twin Creeks	5,130,000		
Newmont	Turquoise Ridge (25%)	1,400,000		
Newmont	Long Canyon	1,200,000		
Barrick	Goldstrike (OP and UG)	8,539,000		
	Cortez	11,129,000		
	Turquoise Ridge (75%)	4,214,000		
	South Arturo	233,000		
Coeur	Rochester	477,000	79,343,000	
Kinross	Round Mountain (100% as of 1/11/16)	1,470,000	870,000	
	Bald Mountain (100% as of 1/11/16)	1,117,000		
Hycroft Mining	Hycroft	10,550,000	4,627,500	
Silver Standard	Marigold	2,170,000		
Klondex	Midas	72,000	3,304,700	
	Fire Creek	314,600	233,333	
KGHM	Robinson			1,062,000,000
	Totals	69,805,600	161,888,533	2,812,000,000

For 2015, Nevada had 24 plants at 16 fields that sold approximately 3.1 million megawatt hours of electricity worth approximately \$240 million, see Table 5. According to the U.S. Energy Information Association, this is enough to power about 280,000 Nevada residential homes for a year. Geothermal heat is also used for a variety of commercial, domestic and public applications in Nevada. Schools in Elko County, a casino in Washoe County and homes in Lincoln and Washoe counties are examples of public and private facilities using this renewable energy resource.

Conclusion

Nevada's mineral industry continued to be a major economic force in the state with a total value of over \$7 billion in 2015. Given a stable price and regulatory environment this situation should continue for many years to come. Nevada is a major natural resource producer and has significant mineral and energy resources that can provide strong economic development into the future.

Table 4. Nevada Oil Production in 2015

Operator	Producing Field	# of Producing Wells	Total Barrels Sold
Makoil	Trap Spring	28	114,214
Grant Canyon	Grant Canyon	3	43,164
Kirkwood	Eagle Springs	12	32,628
Grant Canyon	Blackburn	5	32,055
Western General	Kate Spring	3	21,785
Kirkwood	Ghost Ranch	3	9,840
Frontier Exploration	Trap Spring	6	6,120
Makoil	Kate Springs	1	5,626
Makoil	Ghost Ranch	1	5,436
Grant Canyon	Bacon Flats	1	4,891
Kirkwood	Sand Dune	1	2,600
Grant Canyon	Sans Spring	1	1,213
Andromeda	Tomera	2	1,117
Noble Energy	Huntington	1	986
Makoil	Currant	1	141
Makoil	Duckwater Crk	1	45
Makoil	E Inselberg	1	14
Totals		71	281,875

Table 5. Nevada Geothermal Production in 2015 by Company

Company	Total Output (Sales) MWh
Ormat Nevada Inc.	1,797,415
Terra-Gen Dixie Valley LLC	462,471
NGP Blue Mountain 1 LLC	243,659
Enel North America Inc.	233,645
Patua Project LLC	121,026
Beowawe Power LLC	100,569
USG Nevada LLC	79,538
Cyrq Energy	66,864
Homestretch Energy	9,655
Total	3,114,842



*Wild Rose production wells, Mineral County
(Lowell Price photo).*



*Huck Salt, Churchill County
(Rich Perry photo).*

Index

Adams Claim Gypsum Mine 5
Apex Quarry 25
Argenta Mine 12
Bald Mountain Mine 19
Basalt Diatomite Mine 22
Betze-Post Mine 11
Big Ledge Mine 18
Blue Diamond Hill Mine 25
Borealis Mine 21
Carlin Operations 11
Churchill Mine 20
Clark Mine 5
Coeur Rochester Mine 8
Colado Mine 8
Cortez Hills Mine 12
Denton-Rawhide Mine 21
Fernley Diatomite Operations 21
Fire Creek Mine 12
Florida Canyon Mine 8
Greystone Mine 12
Hazen Mine 21
Heart of Nature 23
Hollister Mine 18
Huck Salt 21
Hycroft Mine 6
IMV Nevada 23
Jerritt Canyon Mine 19
Lima Nevada Gypsum Mine 25
Lone Tree Complex 6
Lucerne Mine 5
Lucky Boy Quarry 21
Manhattan Gulch Mine 23
Marigold Mine 7
Meikle Mine 19
Midas Mine 19
MIN-AD Mine 7
Mineral Ridge Mine 23
Mt. Moriah Quarry 19
Mountain Spring Mine 12
Nassau Mine 8
NCC Flanigan Clay Mine 5
NCC Fernley Operations 5
Nightingale Mine 21
PABCO Gypsum Mine 25
Pan Mine 19
Perlite Mine 21
Phoenix Mine 12
Pilot Peak Quarry 19
Pinson Mine 7
Pipeline Mine 12
Premier Magnesia 23
Rainbow Quarry 25
Relief Canyon Limestone Mine 8
Robinson Mine 19
Rossi Mine 19
Ruby Hill Mine 11
Sexton Mine 8
Silver Peak Lithium Operations 23
Simplot Silica Products 25
Smoky Valley Common Operation 23
Sterling Mine 23
Sunrise Placer Mine 8
Tenacity Perlite Mine 25
Turquoise Ridge Joint Venture 7
Twin Creeks Mine 7