

NEVADA EXCELLENCE IN MINE RECLAMATION AWARDS, 2016

- ▣ Award Program began in 1991.
- ▣ Purpose: *“to recognize and share examples of successes in the areas of reclamation, closure, planning, and wildlife protection and enhancement in Nevada”*
- ▣ MEMBERS OF AWARD COMMITTEE:
 - Joe Sawyer, NDEP-BMRR
 - Paul Comba, NDEP-BMRR
 - Susan Elliot, USFS
 - Dan Atkinson, BLM
 - Matt Maples, NDOW
 - Rich Perry, NDOM





Nevada Excellence in Mine Reclamation

Newmont Mining Corporation

**Bootstrap-Tara-Capstone Waste Rock
Disposal Facilities Project**

*Overall Mine Reclamation, and
Wildlife Habitat Enhancement*

Elko and Eureka Counties

Bootstrap/Tara/Capstone WRDF in 2016, after 10 years of vegetation growth.



Capstone Backfill after revegetation



Tara South WRDF- 2016



Accepting the award in two categories for Newmont today:

Jerry Pfarr, Regional VP Sustainability
and External Relations

Steve Johnson, Manager Carlin Surface
Operations

Categories: *Overall Mine Reclamation,*
and

Wildlife Habitat Enhancement



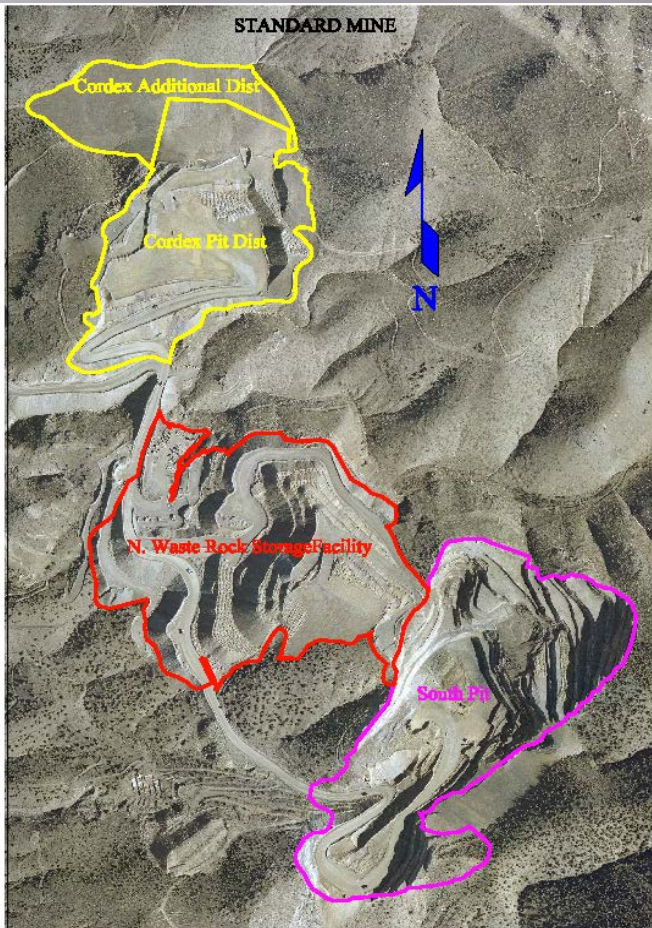
Nevada Excellence in Mine Reclamation

Rye Patch Mining US, Inc.

Standard Mine North Waste Rock Storage Facility
Reclamation Design and Planning
Pershing County

Rye Patch Gold – Standard Mine

STANDARD MINE PITS – PRE RECLAMATION



Backfilling North Pit



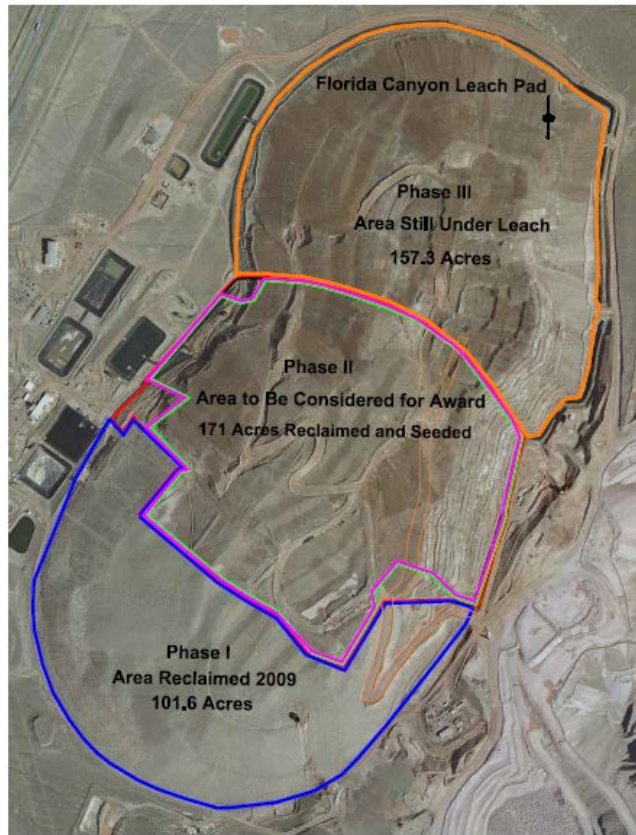
Standard Mine- Final 3V:1H west slope of NWRSF



Standard Mine: NWRSF from I-80 looking east, 2016



Florida Canyon Phase II Leach Pad Reclamation - Acknowledgment



6 months after seeding

Accepting the award for Rye Patch today is:

- ▣ Brant Ford, Engineering Projects
Manager

*Category: Reclamation Design and
Planning*



Nevada Excellence in Mine Reclamation Jerritt Canyon Gold

Gracie, Snow and Marlboro Canyon WRD
area Reclamation and Marlboro Canyon
Bioreactor

*Innovative Reclamation and Closure in an Alpine
Environment*
Elko County

Jerritt Canyon Gold

- ▣ Gracie RDA re-shaped and compacted before seeding



- ▣ Gracie RDA in 2014 after revegetation



Jerritt Canyon Gold

- ▣ Snow Canyon East RDA line conveyance ditch, 2014

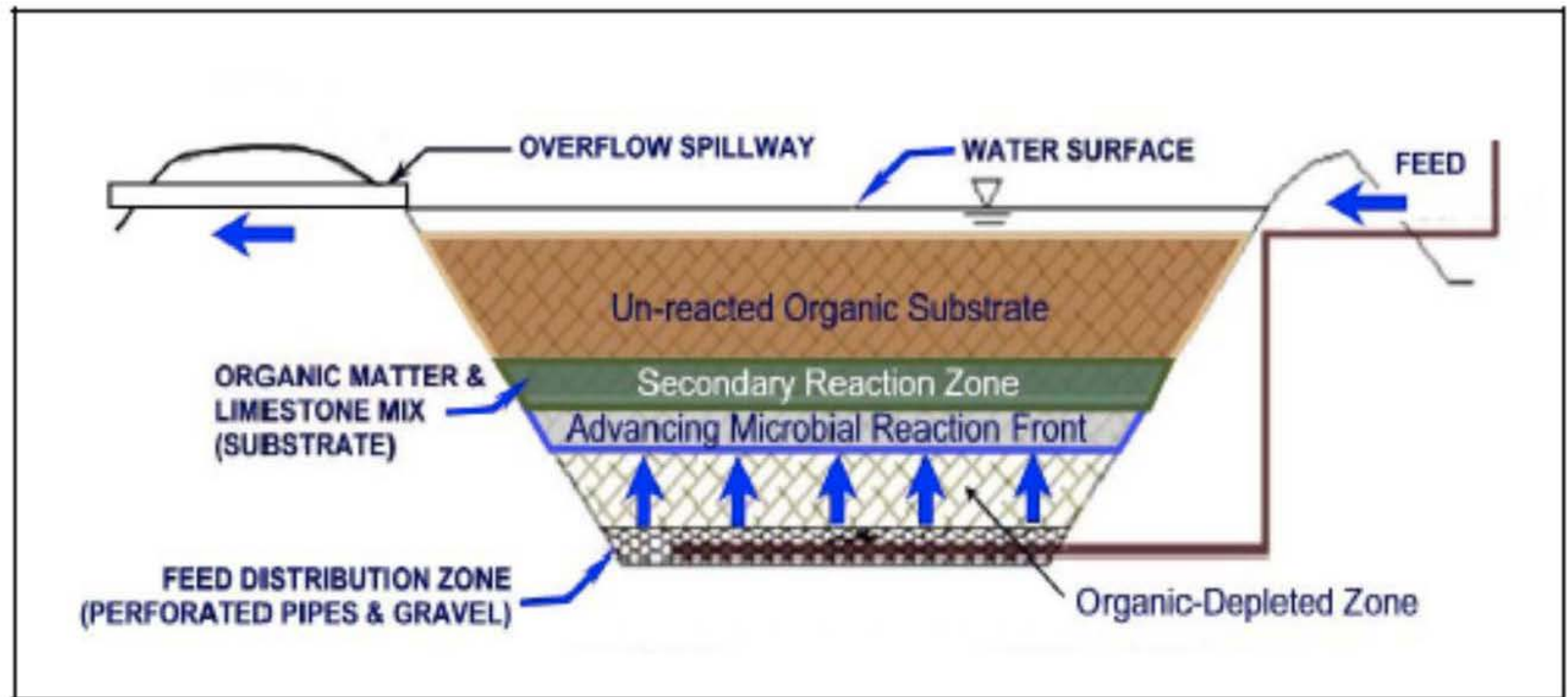


- ▣ Snow Canyon East RDA reshaping



Jerritt Canyon Gold

- Cross-section design of SRT trench bioreactors



Jerritt Canyon Gold

▣ Construction of trench bioreactors



Accepting the award for Jerritt Canyon Gold today are:

- ▣ Chad Eklund , Surface Operations Manager
- ▣ Mirinda Jones , Environmental Manager
- ▣ Brant Bowen

Category: *Innovative Reclamation and Closure in an Alpine Environment*



Nominations and Entries for 2017

- ▣ Nominations by Government Agencies
- ▣ Mining and Exploration entries
- ▣ Share innovative, excellence and best practices
- ▣ Deadline for entries August 4, 2017
- ▣ Committee would like to see more entries in exploration reclamation and concurrent reclamation where there is bond release
- ▣ Please take flyer back to your site