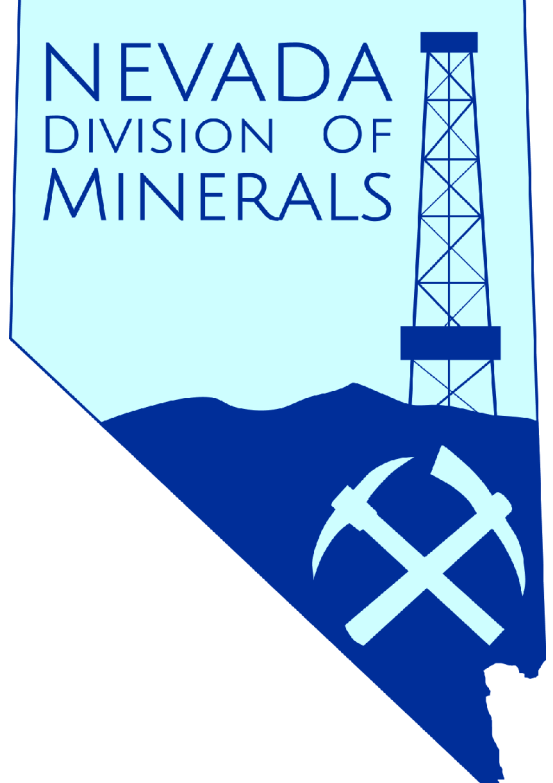
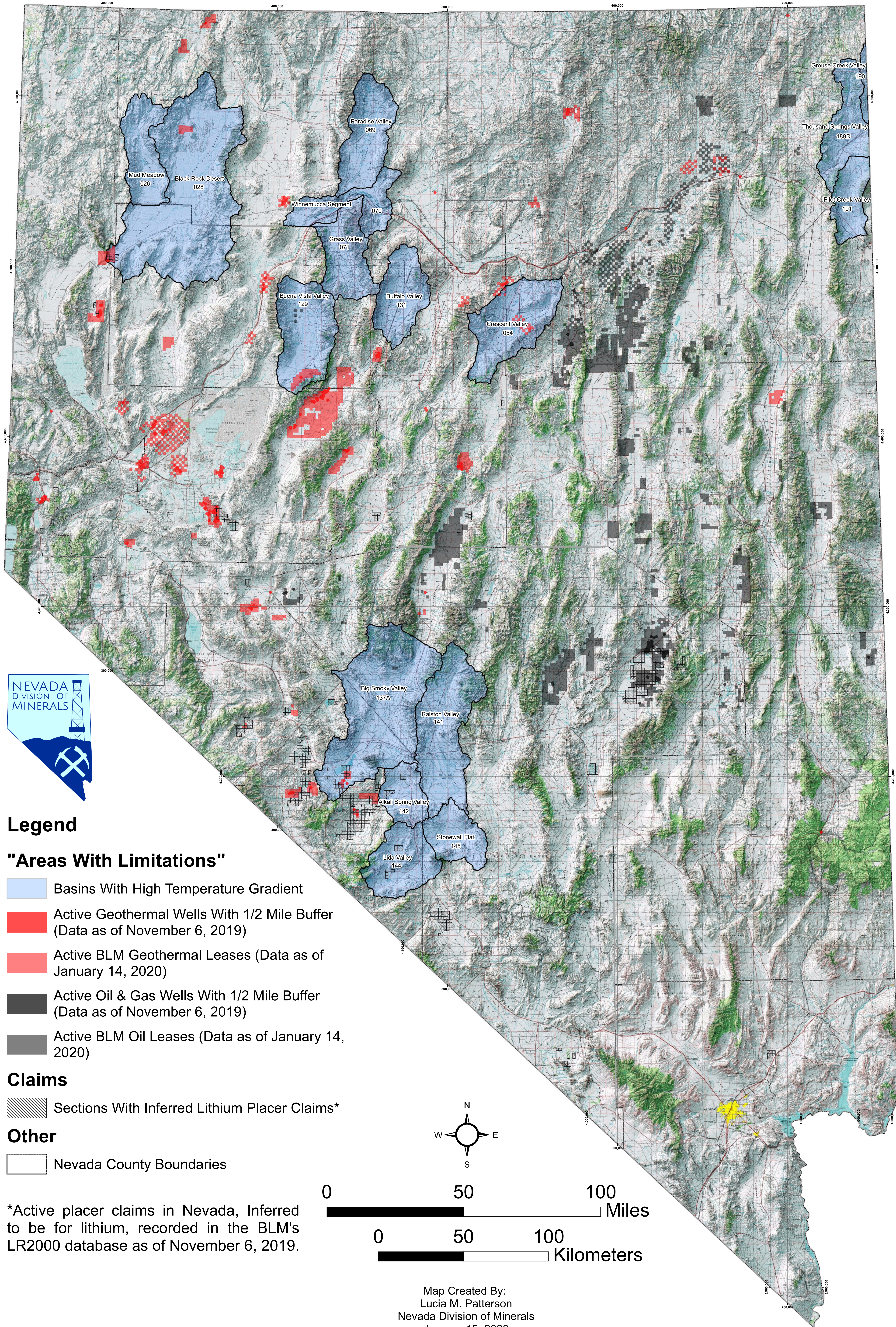


# Oil, Gas, and Geothermal Resources and Groundwater Basins with High Temperature Gradients



## Legend

### "Areas With Limitations"

- Basins With High Temperature Gradient
- Active Geothermal Wells With 1/2 Mile Buffer (Data as of November 6, 2019)
- Active BLM Geothermal Leases (Data as of January 14, 2020)
- Active Oil & Gas Wells With 1/2 Mile Buffer (Data as of November 6, 2019)
- Active BLM Oil Leases (Data as of January 14, 2020)

### Claims

- Sections With Inferred Lithium Placer Claims\*

### Other

- Nevada County Boundaries

\*Active placer claims in Nevada, Inferred to be for lithium, recorded in the BLM's LR2000 database as of November 6, 2019.