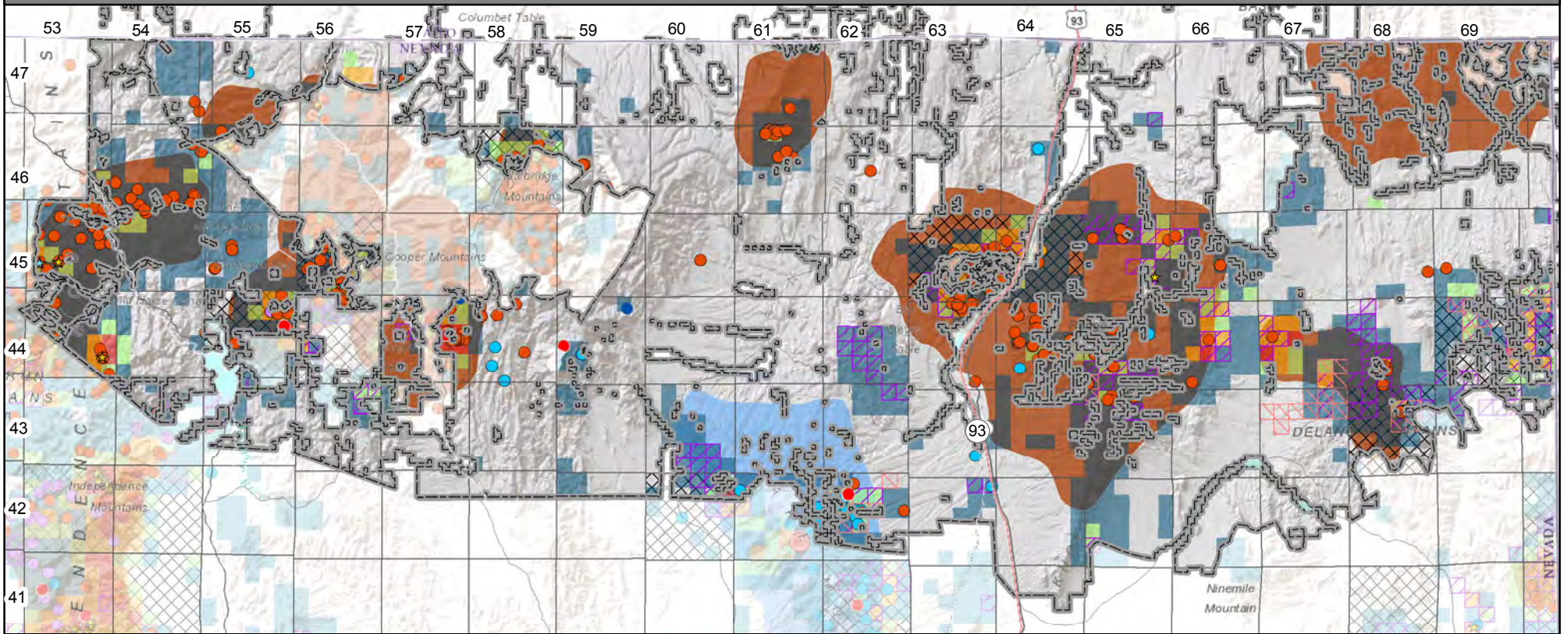
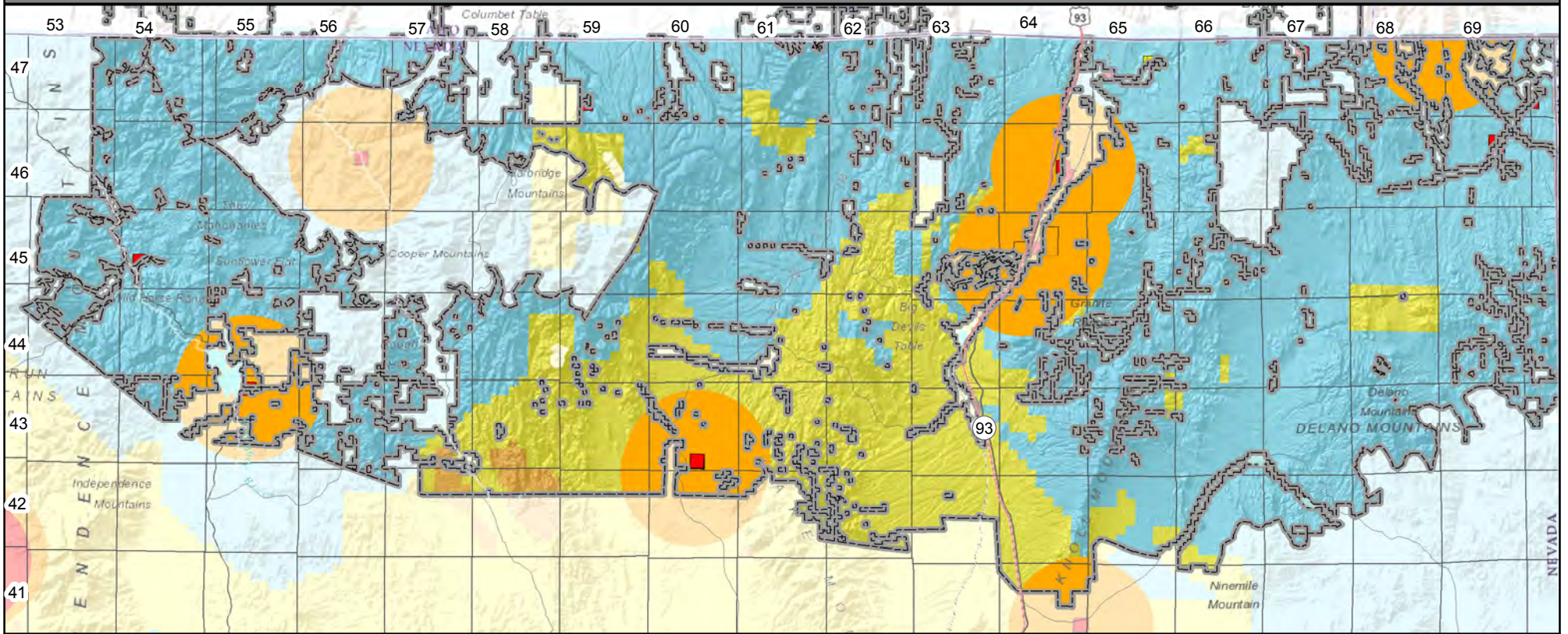


# Area 4: Minerals/Mining



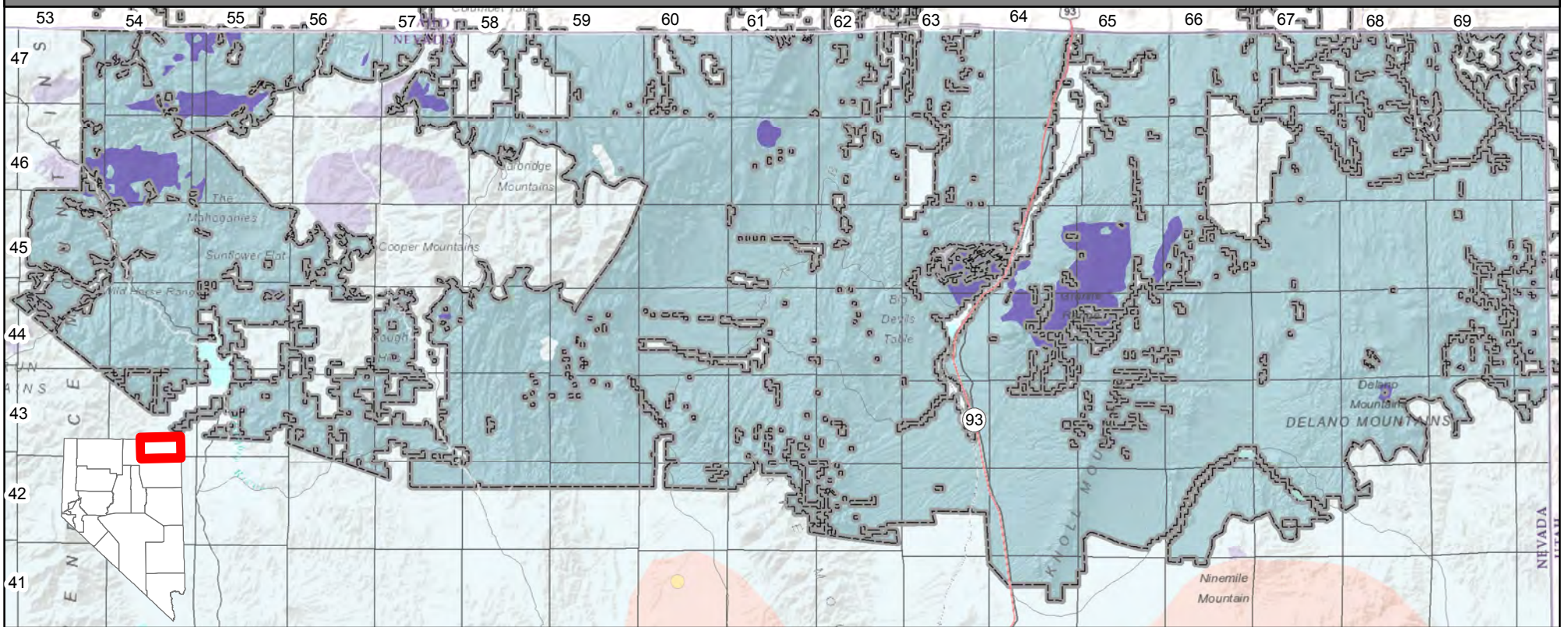
<b>Mineral Deposits</b> <ul style="list-style-type: none"> <li>● Metallic</li> <li>● Non-Metallic</li> <li>● Both</li> <li>● Not Listed</li> </ul>	<b>Industrial Mineral Deposits</b> <ul style="list-style-type: none"> <li>▲ Significant production</li> <li>▲ Silica</li> <li>▲ Stone</li> </ul>	<b>BLM Permits and Plans (1978–2012)</b> <ul style="list-style-type: none"> <li>▭ Plans of Operation</li> <li>▭ Notices of Intent</li> <li>▭ Townships with Drill Projects for Metals (2005–2012)</li> </ul>	<b>Active Mines</b> <ul style="list-style-type: none"> <li>● Industrial Mineral Mines (mainly post-1930)</li> <li>★ Gold</li> <li>★ Silver</li> </ul>	<b>Mining Claims by Section (1976–2012)</b> <ul style="list-style-type: none"> <li>▭ Sections that have had active claims between 1976 and 2011</li> <li>▭ Metallic Mining Districts</li> <li>▭ Nonmetallic Mining Districts</li> </ul>	<b>Active claims at the end of 2012</b> <ul style="list-style-type: none"> <li>▭ 1–10 claims</li> <li>▭ 11–30 claims</li> <li>▭ &gt;30 claims</li> </ul>
---	---	---	--	--	---

# Area 4: Geothermal



<b>Geothermal Potential</b> <ul style="list-style-type: none"> <li>■ High Local Potential <math>\geq 150^\circ\text{C}</math></li> <li>■ Regional Potential <math>\geq 150^\circ\text{C}</math></li> <li>■ Regional Potential <math>\geq 100^\circ\text{C}</math></li> <li>■ Lower Regional Potential</li> </ul>	<b>Thermal Spring Temperatures</b> <ul style="list-style-type: none"> <li>■ Hot Spring (<math>&gt;37^\circ\text{C}</math>)</li> <li>■ Warm Springs (<math>19\text{--}37^\circ\text{C}</math>)</li> <li>◆ Dry Warm Spring</li> <li>◆ Dry Hot Spring</li> <li>● Fumarole</li> <li>● Non-thermal</li> </ul>	<ul style="list-style-type: none"> <li>▭ BLM Geothermal Leases (2007–2012)</li> </ul> <p><small>Data from BLM LR2000 database.</small></p>
---	---	--

# Area 4: Oil and Gas



<b>Oil and Gas Potential</b> <ul style="list-style-type: none"> <li>■ High potential</li> <li>■ Moderate potential</li> <li>■ Low potential</li> <li>■ Very low-to-no potential</li> </ul>	<b>Calderas and Other Low Potential Areas</b> <ul style="list-style-type: none"> <li>■ Certain, probable, and unevaluated calderas</li> <li>■ Doubtful calderas</li> <li>■ Very low-to-no potential geologic units</li> <li>■ Core complex areas</li> </ul>	<b>Oil and Gas Well Data</b> <ul style="list-style-type: none"> <li>● Oil Producer</li> <li>● Oil and Gas Show</li> <li>● Oil Show</li> <li>● Gas Show</li> <li>× No Show or No Data</li> </ul>	<ul style="list-style-type: none"> <li>▭ Township Range</li> <li>— Major Roads</li> </ul>	<p>Prepared by the Nevada Bureau of Mines and Geology June 2015</p>	<p>Area of Interest</p> <p>0 4.25 8.5 17 Miles</p> <p>0 5 10 20 Kilometers</p>
---	--	--	---	---	--