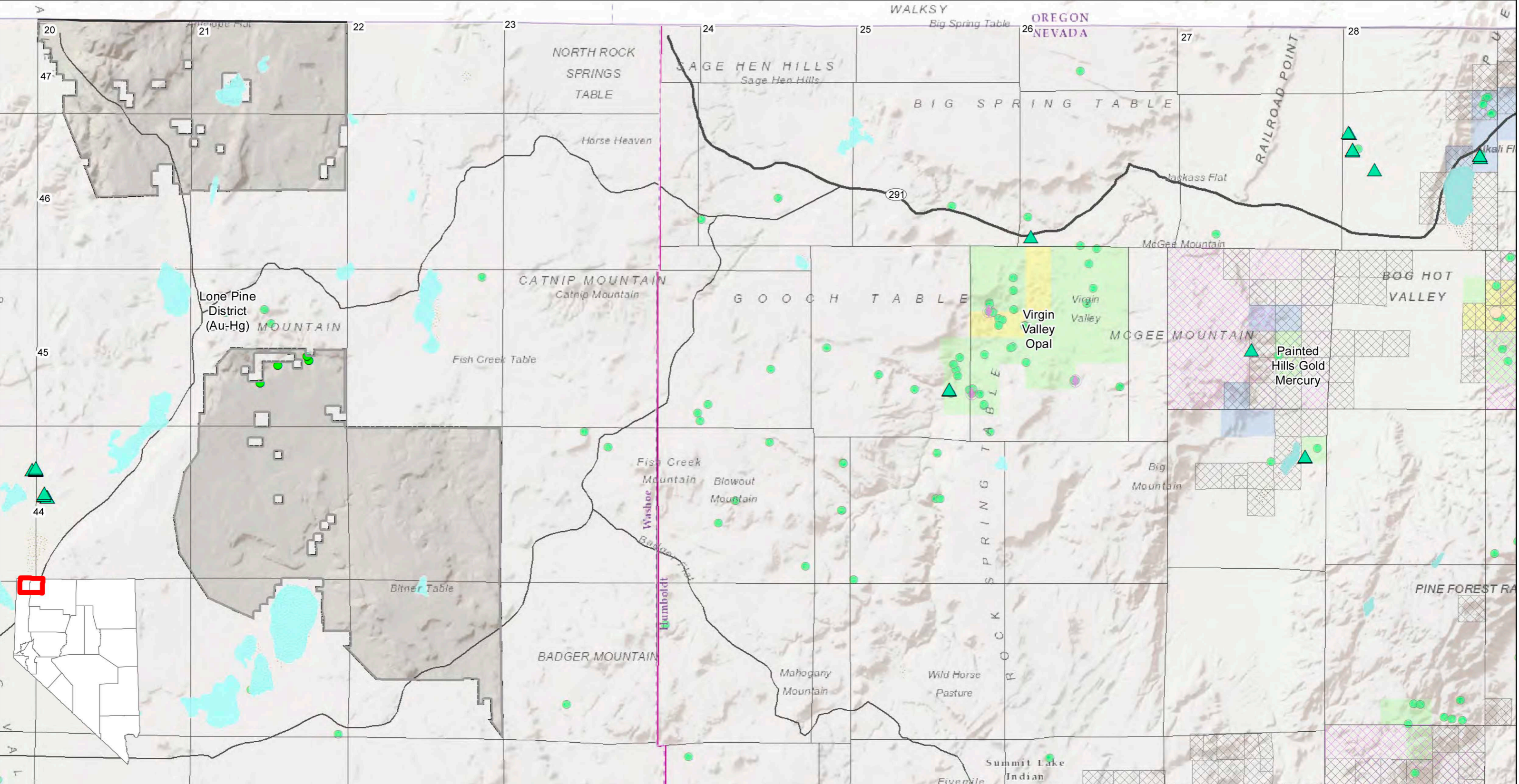


# Area 1: Minerals/Mining and Geothermal Potential



**Active Mines**

- Gemstone Mines
- Metal Mines

**Mineral Deposits**

- Metallic, Nonmetallic, and Industrial

**BLM Permits, Plans, and Drill Projects (1978–2014)**

- Plans of Operation Notices of Intent
- Townships with Drill Projects for Metals (2005–2014)

**Active Mining claims as of 10/16/2015**

- 1–10 claims
- 11–30 claims
- >30 claims

**Geothermal Potential**

- Known Geothermal Systems
- Potential Blind Geothermal System (approximately located)
- BLM Geothermal Leases (2007–2012)

*Data from BLM LR2000 database.*

**Townships with High Resource Potential**

- Mineral Potential
- Geothermal Potential
- Combined Mineral and Geothermal

19  
44

Township Range

Major Roads

Area of Proposed Mineral Withdrawal

0 2.5 5 10 Miles

0 3 6 12 Kilometers

Prepared for the Nevada Division of Minerals by the Nevada Bureau of Mines and Geology November 2015

nbmg